

Parisiennes: full-sized; luxurious

Meet Parisienne.

Here is full-size luxury and elegance that glides down open roads and smooths out city streets while comfortably seating six adults. Outside, Parisienne is distinctive, well-styled and tastefully appointed. Inside, it is spacious, quiet and richly detailed.

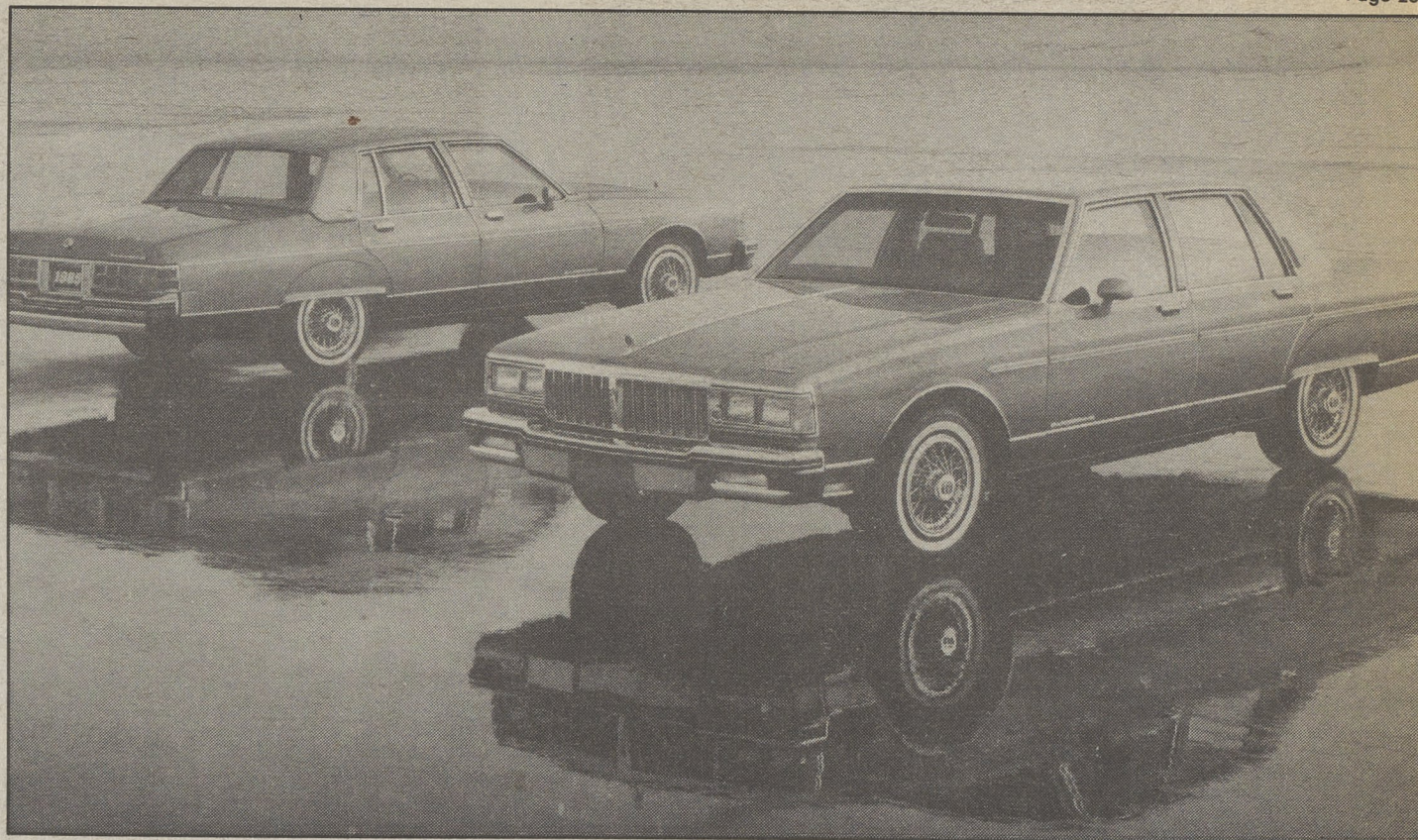
With its full coil suspension and standard responsive 4.3 liter V-6 with fuel injection or your choice of an optional gasoline or diesel V-8 engine, Parisienne is built to travel the road...gracefully.

For the ultimate in Pontiac luxury, drive Parisienne Brougham. Slide behind the wheel and relax in the deeply padded contours of its standard 55-45 split seat with center arm support and reclining passenger backrest.

The 1985 Parisienne Wagon (A) is a blend of luxury and function. Not only can it carry eight adults in total comfort and style, but fold down the back seats and it becomes a workhorse with a 4' wide cargo floor.

The luxurious padded seating of the Parisienne Brougham (B) makes driving a relaxing and enjoyable experience. Parisienne's available instrumentation (C) gives an easy view of all monitored functions, keeping you well-informed.

(Parisienne is available at Wyoming Valley Motors, 588 Pierce St., Kingston)



The new Parisienne

The Parisienne, a distinctive, full-size luxury sedan from Pontiac, is available at Wyoming Valley Motors, 588 Pierce St., Kingston.

**Leaders
in
Business**

Students turning to technical schools

As high technology becomes a more intricate part of today's careers, students are turning to trade and technical schools for skills training to meet the challenge.

According to the Bureau of Labor Statistics, U.S. Department of Labor, 75 percent of the 25 million new jobs to spring

up in the U.S. in the next decade will be service related. These jobs will be in communications, trade fields, and transportation.

The fastest growing occupations, says the BLS, include computer service technicians, legal assistants, computer sys-

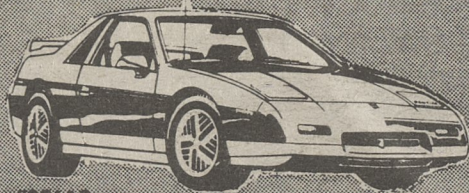
tems analysts, computer programmers, and computer operators.

These occupations with the largest job growth will be building custodians, cashiers, secretaries, general office clerks and salesclerks, predicts the BLS.

PONTIAC PONTIAC PONTIAC PONTIAC PONTIAC
PONTIAC PONTIAC PONTIAC PONTIAC PONTIAC
PONTIAC PONTIAC PONTIAC PONTIAC PONTIAC

GET EXCITED  **DOLLAR FOR DOLLAR
YOUR BEST VALUE**

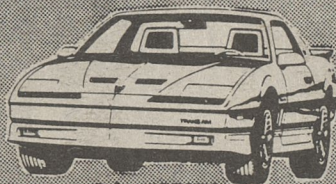
Fiero GT



Stk. #95112

\$266.75 Per Mo.

TRANS AM GRAND AM



Stk. #95072

\$196.53 Per Mo.



Stk. #95099

\$128.94 Per Mo.

* 48 Month Closed End Lease — \$2,000 Cash or Trade Down — 72,000 Allowable Miles.

**SPECIAL
2 FREE TICKETS
To 76'ers—PISTONS
BASKETBALL GAME
FEB. 22—8:00 P.M.
AT THE SPECTRUM
w/ PURCHASE OF ANY
NEW OR USED CAR**

WYOMING VALLEY

PONTIAC • BMW • SUBARU

MOTORS

560 PIERCE STREET,
KINGSTON

288-8477



FIRST LEASE

GMAC LEASING



GENERAL MOTORS CORPORATION

**IMMEDIATE DELIVERY
FINANCING-LEASING
SPECIALISTS**

**COMPLETE
SERVICE-PARTS
&
BODY SHOP**

DON'T YOU FINALLY DESERVE THE BEST!!