



Ford LTD Crown Victoria 4-door Sedan shown with optional pivoting front vent windows, tinted glass, RH remote-control mirror, illuminated entry system, locking

wire-style wheel covers, 15-inch tires, rocker panel moldings, front cornering lamps, bumper rub strips.

Driving this car is fun

The Ford LTD Crown Victoria is designed and engineered to offer a level of driving pleasure few other cars can match.

LTD Crown Victoria provides true six-passenger roominess and quiet riding comfort. V-8 power is standard. The computer-selected suspension system is engineered with large coil springs and new gas-filled shock absorbers for an exceptionally smooth ride. Acoustical insulation is called Super Luxury and rightly so.

The luxuriously appointed LTD Crown Victoria has a full-width flight bench seat

with cloth seating surfaces and dual recliners (optional split bench seats), AM-FM stereo with four speakers is standard (may be deleted for credit.) carpeting is thick cut-pile.

Standard also are a left-hand remote-control mirror, quartz electric clock, and courtesy lights in the ashtray, glove box and in the spacious deep-well trunk. These features and many more are all part of LTD Crown Victoria's environment of luxury and comfort.

The 1985 Ford LTD Crown Victoria is available at A&T MOTORS, 450 West Main Street, Nanticoke, Pa.

AUTO RAMA '85

EXPERIENCE THE JOYS OF OWNING A BMW. OR NOT OWNING A BMW

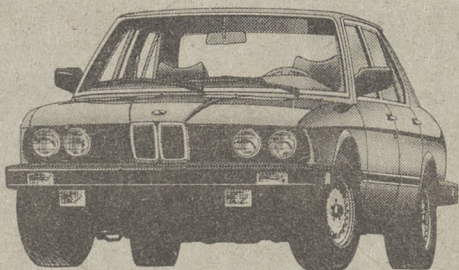
The only truly satisfying alternative to owning a BMW is leasing one. And to make leasing as simple as possible, we'll be happy to handle all the paperwork and technicalities.

We can also explain how leasing for business use could help you realize some healthy savings on your business taxes.

Contact us for complete details.



THE ULTIMATE DRIVING MACHINE.



© 1983 BMW of North America, Inc. The BMW trademark and logo are registered.

WYOMING VALLEY

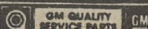
560 PIERCE ST.

PONTIAC • BMW • SUBARU

288-8477



KINGSTON-MOTORS-PENNA.



YOU BEND US WE MEND US

"WE MAKE YOUR CAR WORTH KEEPING"



WE CAN BEAT ANY WRITTEN ESTIMATE COMPLETE PAINT JOB

\$195

For Most Foreign and Domestic Cars

Ziggy's

SOUTH WILKES-BARRE AUTO SHOP
REAR 611 S. MAIN ST., WILKES-BARRE
-PHONE 824-2382-

Thinking about buying a NEW CAR — until you've seen the price? Let us make your OLD CAR look like new and worth keeping at a much lower price. Our 35 years experience in automobile repair can do it.

You will find ALL of us eager to serve you in every possible way

A COMPLETE BODY AND PAINT SHOP!

- Free Estimates • Competitive Prices • Towing Service
- Trucks and Vans • Quality Work • Frame Straightening • Fiberglass • Insurance Claims Processed Immediately

FREE PICKUP and DELIVERY FOR SENIOR CITIZENS



The 1985 Grand Am is a brilliant new driver's coupe from Pontiac. It is the

latest expression of Pontiac road car philosophy.

Grand Am is expression of Pontiac philosophy

The new Grand Am is the latest expression of Pontiac road car philosophy.

The detailed exterior begins with its handsomely executed front end design. The contemporary Pontiac split-grille enhances aerodynamic performance and is flanked by twin rectangular headlamps. The horizontally-ribbed bumpers gracefully blend with the substantial body side moldings, contributing to the total harmony of Grand Am. The flushfitting, aerodynamically raked windshield and the dramatic convex rear window combine with the curved rear quarter glass to give the Grand Am a distinctive character all its own.

The available Rally instrumentation features analog tachometer, digital electronic speedometer and fuel level monitoring. Temperature, oil pressure and volt gauges are also included with Rally instrumentation. Convenient fingertip switches are included for the lights, as well as the windshield wipers, shown with available controlled cycle feature. Also available is "Touch Control" ETR AM stereo-FM stereo with cassette, seek-scan and graphic equalizer.

The new Pontiac Grand Am is available for purchase at WYOMING VALLEY MOTORS, located at 365 Pierce Street, Kingston.

How safe is your car?

Safety, like quality, begins as an attitude, a way of thinking that's fundamental in shaping a vehicle's structure and components from the drawing board to assembly.

Ford commits enormous resources every year to the development and testing of all car lines and their occupant protection features.

Body structures are carefully designed from the start with passenger safety as a primary concern. After they are validated for theoretical soundness, structures are assembled into prototype vehicles and subjected to exhaustive crash testing.

Operating safety applies to a vehicle's ability, with the aid of the driver, to

avoid an accident.

Ford cars are engineered to do their part — provide suspension and steering systems designed for control, as well as a brake system designed to provide fast stopping action and fade resistance.

Of course, it's up to the driver to make the best use of the vehicle's accident-avoidance equipment. This involves driving defensively, reacting in time, and such seemingly small things as properly regulating the ventilation system (to help the driver stay alert).

Bumpers on Ford LTD Crown Victoria are designed to protect lamps, cooling system, exhaust and other body components in the event of a minor impact.