

The 1985 Chevrolet Celebrity Coupe is precision with a personal touch.

Celebrity takes care of you

The Chevrolet Celebrity Coupe - precision with a personal touch.

This is the Celebrity that was designed to take special care of just you.

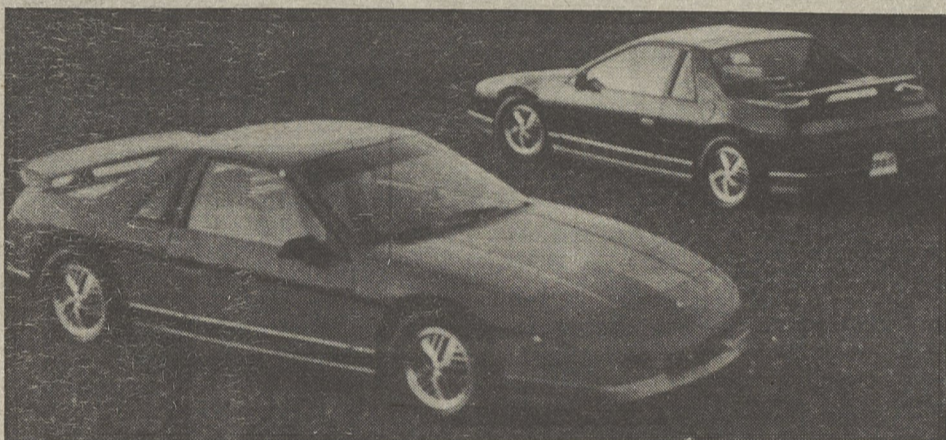
Its precise driving comes from stabilizer bars, front and rear. Rack-and-pinion power steering. Power front disc-rear drum brakes. And all-season M & S-rated (Mud and Snow), steel-belted radial tires designed for high traction, low noise and long wear.

Like every Celebrity, this coupe coddles you in comfort enhanced by tuned

body mounts. Thick blankets of sound deadeners seal the floor, doors, cowl and roof. Even the carpet is installed in one piece to eliminate seams where noise could enter.

Once behind the wheel, the response is Celebrity precision at its best. But the real joy of owning this coupe is its very personal style, made even sportier by the available deck-lid luggage carrier.

The 1985 Chevrolet Celebrity Coupe is available at VALLEY CHEVROLET, 355 Market Street, Kingston, Pa.



The exciting new Pontiac Fiero GT is derived from the "Indy Fiero" pace car.

Fiero — only from Pontiac

Introducing the exciting Pontiac Fiero GT. Its slippery aero nose, special ground effect side skirts and available rear wing spoiler are all derived from the fabulous 1984 Indianapolis 500 "Indy Fiero" pace car.

Propelling this superb shape is a mid-mounted 2.8 liter V-6 engine with multi-power fuel injection. Its imposing power is transmitted to the road through a rugged 4-speed manual gearbox (a 3-

speed automatic is available).

Fiero GT responds with rack and pinion steering. Fully independent suspension. And a WS6 performance package that includes specially tuned shocks and springs, and Good year Eagle GT radials mounted on 14" hi-tech cast aluminum wheels.

Fiero GT. A proud addition to the ranks of world-class sports cars, only from Pontiac.

AUTO PARTS

- MONROE SHOCK ABSORBERS
- AP MUFFLERS & PIPES
- AC & WIX OIL & AIR FILTERS
- BLUE STREAK IGNITION
- AC & CHAMPION SPARK PLUGS
- AMALIE OILS & GREASES
- REPLACEMENT PARTS FOR ALL VEHICLES

COMPLETE MACHINE SHOP



23 VEHICLES FOR FAST DELIVERY SERVICE—PARTS FOR ALL CARS—TRUCKS & TRACTORS FOREIGN—DOMESTIC

HOUSE OF A MILLION PARTS SERVING THE PUBLIC OVER 50 YEARS

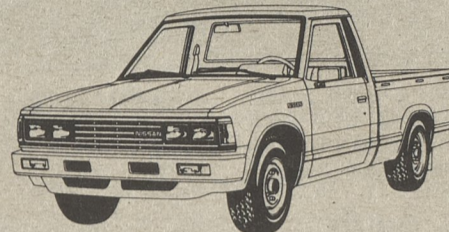
KLEIN AUTO PARTS

TUNKHANNOCK 11 BRIDGE ST. 836-2143	WILKES-BARRE 354 N. RIVER 823-3174	NANTICOKE 34 W. BROAD ST. 735-5300	PITTSTON 126 S. MAIN ST. 654-4607
--	--	--	---

NISSAN FOR '85

*A great truck,
Even better*

With an all new welded, double-wall, seamless bed and new styling.



Nissan Regular Bed

With proven Nissan dependability and 23 models, Nissan again leads the pack.

Priced as low as \$6439^{00*} for the standard regular bed.

*Delivered, tax & license extra.

See them at:



(Division of Fred Schuler, Inc.)

NEW CAR SHOWROOM

1200 Sans Souci Parkway, Wilkes-Barre

Phone 825-4581

Mon. thru Fri. 7:30 a.m. to 8 p.m.

Saturday 7:30 a.m. to 2 p.m.

Automobile City is Nissan dealer

Automobile City, a division of Fred Schuler, Inc., is a Nissan dealer and provides service on all types of Nissan automobiles.

With two locations at 1280 Sans Souci Highway and 206 Carey Ave., Wilkes-Barre, Automobile City provides both

parts and service. In existence for 34 years, 16 of them as a Nissan dealer, Automobile City is a family-owned business and owned by the Schuler Family.

Mary Schuler is president of the company while Frederick Schuler serves as general manager and Dave Schuler is sales manager.



American Motors' 1985 Renault Alliance convertible joins the family of Renault Alliance 4-door and 2-door sedans. Powered by new 1.7 liter over-

head cam engine, the Alliance convertible is AMC's first convertible model since 1968.

AUTO RAMA '85