



Dallas Post/Ed Campbell

**Irem concert**

The Irem Temple first summer concert was held recently in the Irem Temple Country Club pavilion, Dallas, with the Gold Medal Band, shown above. John J. Sauer is bandmaster and Reese Pelton, in photo at left, is director. The Rev. Charles Gommer, Jr., district superintendent, United Methodist Conference, conducted the vesper service preceding the program. Other concerts scheduled for this summer are as follows:

Sunday, July 15--Wyoming Valley Chapter, Sweet Adelines, Kay Augst, director; Sunday, July 22--SPEBSQSA Chorus, Ray Patsko, director; Sunday, July 29--Irem Chanters, Merle R. Edwards, director; Sunday, Aug. 5--Irem Brass Band, Lester R. Lewis, director; Sunday, Aug. 12--Welsh Night will be held with St. David's Society of Wyoming Valley Inc.; Sunday, Aug. 19--Bobby Baird and his Dixieland Band; Sunday, Aug. 26--Irem String Band, Dean Balcomb, director. All concerts start at 8 p.m. and are open to the public free of charge.



Dallas Post/Ed Campbell



**Pets visit Day Care**

Little General Day Care Center recently hosted Sheila Hoover of Ida's Pet World, Midway Shopping Center, Wyoming, along with a number of small pets. The children were introduced to the responsibilities of caring for a small pet such as how and what to feed certain animals and how to keep them in their proper environments. Hamsters, rabbits, a parakeet, myna bird and a baby boa constrictor were brought in cages for the children to view. Pictured above with Sheila Hoover, an employee of Ida's Pet World, is Chrissy Costill, left, of Dallas and Kelly Metzgar, center, of Wilkes-Barre.

**Bugs become abundant this time of year**

Although nipping insects are not confined to the summer scene, insect life cycles and our enthusiasm for outdoor fun brings the problem to a head during the hot, muggy months of the year.

Of all the insects that fly, crawl, buzz or bite, there is none that annoys more people, more often, than the mosquito.

With modern methods of mosquito control, mosquito-borne diseases are not longer abhorred as much as the buzzing, swatting and itching that accompany an attack from these tiny nuisances.

Dr. Ernest Witte, director of the

state Health Department's Division of Epidemiology, gives a few defensive tactics to help you protect yourself from as much "mosquito-borne" discomfort as possible.

"Don't swat," he says. "Movement and body warmth are the two things that attract a mosquito to its target. Wear light colored clothing. Dark clothing generates more heat."

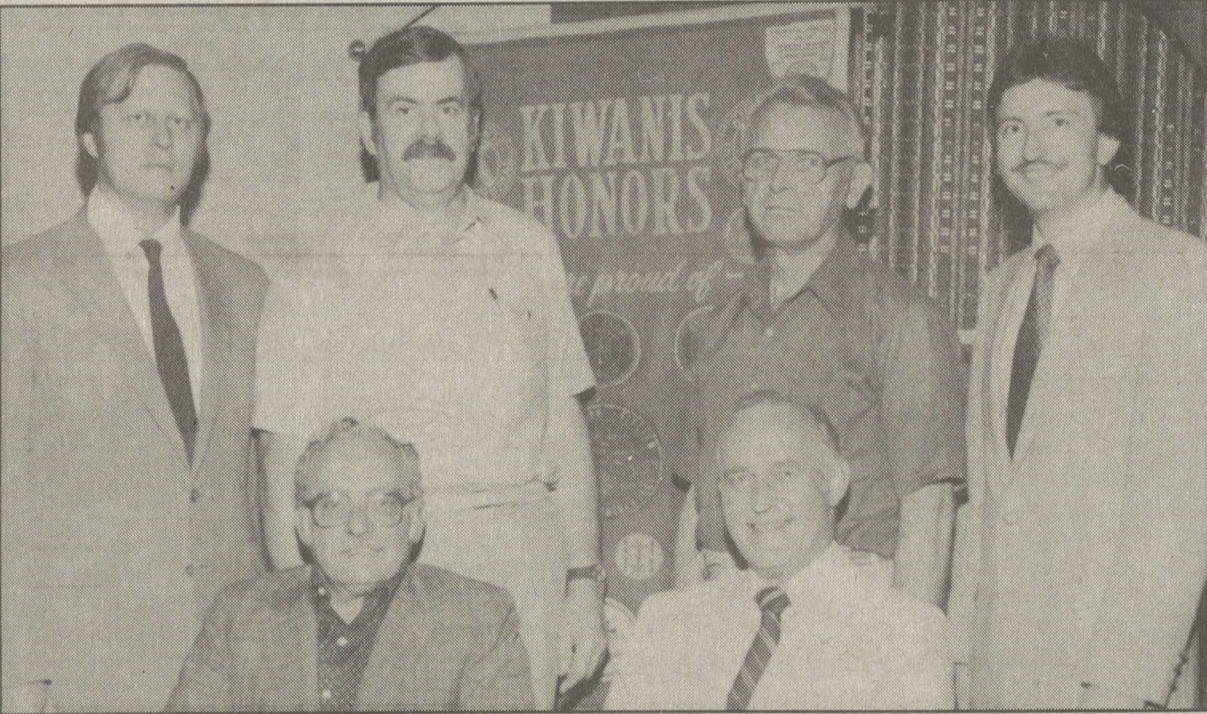
Witte also urges the use of a good insect repellent on the exposed parts of the body. "Reapply the repellent as often as necessary, because perspiration may dilute it and lessen its effectiveness," he

says.

Good sanitation and maintenance around the home also aid in mosquito control, according to Witte.

"Drain or empty at regular intervals, all standing water, including puddles where water collects, children's wading pools, bird baths, wheelbarrows, watering cans, and any containers or items that will hold water. And be sure windows and doors are tightly screened," he says.

Two other insects that plague Pennsylvanians during the summer, especially outdoorsmen, are blackflies and deerflies.



**New Kiwanians**

Three new Kiwanians pose with the induction team following recent ceremonies officially accepting them into the Dallas Kiwanis Club. By joining the international service club, they unite with over 12,000 Pennsylvania members. Seated are 'Link' Lindquist, Dallas Kiwanis President and new member Bob Bossart of the United Penn Bank. Standing are new member Bill Paculavich, assistant manager of Native Textiles; Reese E. Pelton, Dallas secretary; Ed Wodaski, membership chairman; and new member John Minetola of Commonwealth Telephone. Dallas Kiwanis is presently involved in the annual presentation of the Great American Circus and a September production of its annual Awareness Expo, among other projects.

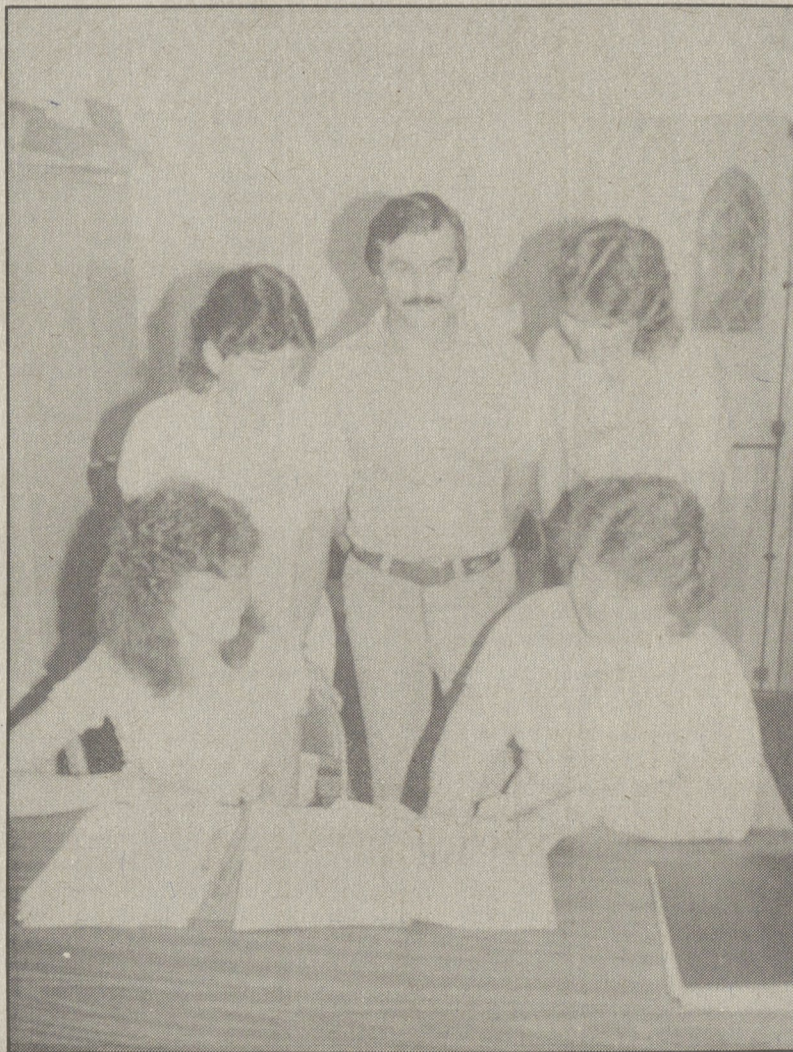
**TV series discusses retirement**

Planning for and enjoying retirement is becoming a concern of more and more Luzerne countians. To aid an increasingly older population, the Pennsylvania State University Cooperative Extension Service is sponsoring a television series titled, "The Second Half of Your Life."

The series deals with just about every aspect of getting ready for and enjoying your retirement years. Luzerne County Extension Home Economist, Josephine Kotch says the six half-hour programs cover the mental, financial, dietary, physical, housing, and planning requirements of retirement.

The series started Monday, July 9, on Cable Channel Pennarama 13 in Scranton, Kingston, Swoyersville, Luzerne, Northeast Cable TV, Cable TV Co. and Service Electric Cable TV. Air times for the program are 8:30, 12:30 and 4:30 a.m. and p.m., Mondays, Wednesdays and Fridays. Rocking and Rolling Toward Retirement can be seen on July 9, 11 and 13; The Financial Facts of Retirement, July 16, 18, 20; No Retirement from Eating Right, July 23, 25, 27; The Shape You're In, July 30, Aug. 1, 3; Your Place in the Sun, Aug. 6, 8, 10; and Planning a Pleasurable Retirement, Aug. 13, 15 and 17.

A viewers handbook is available and provides useful planning guides and helpful information. Copies may be obtained by writing: The Second Half of Your Life, Dept. 7000, University Park, PA 16802. There is no charge for enrollment or the handbook.



Dallas Post/Ed Campbell

**Group meets**

The Thresholds Organization, a volunteer group dedicated to counseling prisoners of the State Correctional Institution at Dallas, held a meeting recently. Shown here at a meeting are, from left, Rose Ann Pilecki, Debbie Wilushewski, Dolores Shiskowski. Standing, Richard Nash, Debbie Thrash. The group meets at the Prince of Peace Church, Dallas.

**COOL OFF WITH SOME HOT PRICES from VOITEK**

Check these prices on **Whirlpool REFRIGERATORS!**



**19.1 cu. ft. No-Frost Model EB19AK**

With • 5.88 cu. ft. Bottom Freezer • No-fingerprint Textured Steel Doors with the luxurious look of leather • Adjustable Shelves with DURAWHITE™ Finish • Provision for optional ICEMAGIC™ Automatic Ice Maker • Porcelain-on-steel Interior Liner

**\$718<sup>00</sup>**

**YOUR CHOICE**



**19.1 cu. ft. No-Frost Model ED19TKXL**

With • No-fingerprint Textured Steel Doors with the luxurious look of leather • Meat Pan with Adjustable Temperature Control • Slide-out Freezer Bin • Automatic Door Closers • Door Stops • Provision for optional ICEMAGIC™ Automatic Ice Maker



**19.2 cu. ft. Model ET19TKXL**

With • No-fingerprint Textured Steel Doors • Adjustable Rollers • Door Stops • Provision for optional ICEMAGIC™ Automatic Ice Maker • Durable Porcelain-on-steel Interior Liner • Full-width, Adjustable Shelves • Power Saving Heater Control Switch • 4 Super Storage Door Shelves

**\$598<sup>00</sup>**

BANK FINANCING — VISA — MASTERCARD

**VOITEK**

WHY NOT SHOP THE VOITEK WAY? DISCOUNT PRICES EVERYDAY!

**TV AND APPLIANCES**

639 WYOMING AVENUE, KINGSTON 287-9631

VISA **PLENTY OF FREE PARKING** MASTERCARD

Instant Credit and 90 Day Cash Option To Qualified Buyers. 3 Yr. Bank Financing