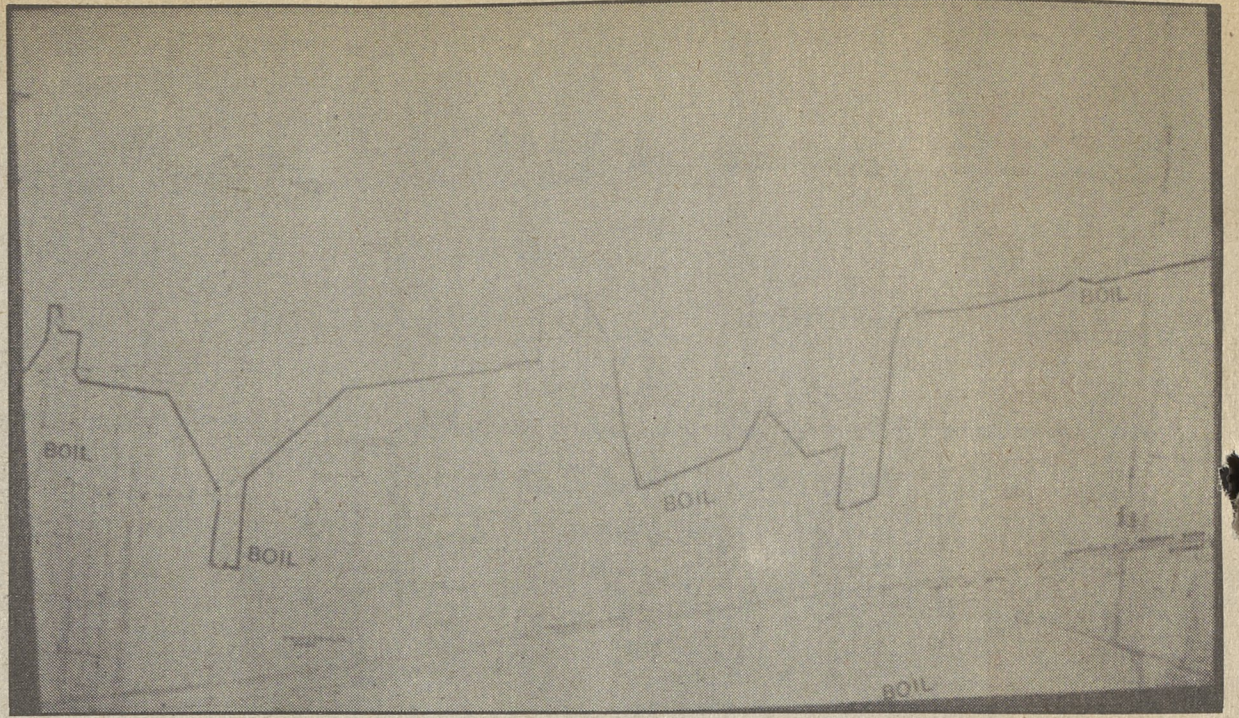




Drive begins

The Swoyersville Police Community Ambulance Association will be starting their Annual Membership Drive soon. The small fee of \$2.00 per family remains the same. This fee will cover the use of the ambulance for all local emergency calls. Chairman of the drive is John Konopka Sr. and drive secretary is Patrolman John Shemo. The Ambulance Association hopes that all families will support this vital service as they have done in the past. Pictured above are the new officers for 1984 and several of the members. From left, seated, are Jim Urban, vice president; Lisa Sentigar, secretary; Barbara Mikulka, president; John Shemo, treasurer. Standing, Jay Lyons, John Konopka Sr., James Pugh, councilman, Joe Perugno, John Urban. Absent when photo was taken, Beverly Kile, financial secretary.



Map available

Shown here is a replica of the large scale map prepared by PG&W, indicating "Boil" and "No Boil" areas. The map is available for the public's convenience at the Swoyersville Municipal Building.

Snowmobilers can enjoy state trails

Snowmobile users will again have access to a number of roads and trails on State Game Lands in Northeastern Pennsylvania, according to J.R. Fagan, Northeast Division Supervisor, Pennsylvania Game Commission. Fagan advises that all users become completely familiar with regulations before utilizing the areas.

The 1984 seasons will permit usage between January 15 through

April 1.

All roads and trails on Game Lands, set aside for snowmobiling, will be clearly marked with a standard symbol statewide, an orange colored, diamond shaped marker, approximately 5 x 7 inches in size. It is unlawful to drive all-terrain vehicles, jeeps, motor bikes, scooters, etc., on designated trails and roads.

Following is a list of Game Lands

in Luzerne County on which there are designated areas, roads and trails for snowmobile use.

Wyoming and Luzerne Counties - 14 miles. Railroad grade from Game Lands line at Corner 130, up Bowmans Creek to Highway 487 at Ricketts Station 12 miles. Also, 2 miles of Beth Run Road from railroad grade to south boundary line.

Luzerne County - 5.5 miles. Commencing at boundary near

Fountain Lake, following existing road in an easterly direction to boundary of Luzerne Ochre property, includes side trail, 1 mile north to Spring Brook Water Co., all part of a local established trail system.

Luzerne County - 1.5 miles. Transcontinental pipeline right-of-way, from T668 in an easterly direction to Game Lands boundary near Legislative Route 40068.

Pleasure boaters await warm weather

Look at most pleasure boaters in Pennsylvania these days and you'll see a look of despair on their faces. And no wonder. Pleasure boating, by its very nature, is a warm weather sport. But with sub-freezing temperatures and ice-covered lakes and rivers, it's a bit difficult to get very excited about loading the family in the 18-footer for a Sunday afternoon cruise.

So what can a boater do, since, like others who enjoy the out-of-doors, that itchy cabin fever has set in with no apparent relief in sight for several months. Well, according to the Pennsylvania Fish Commission, the best cure for this dilemma is to get involved in a project or two that is related to the cause of the itch. It should take the boaters mind

off the uncontrollable urge to slip that shiny hull into the water and kick up a rooster tail. And speaking of a shiny hull, perhaps that's a good place to start.

Proper care of your boat is important, and these winter months provide ample opportunity to take care of some marine housekeeping chores. If you haven't done it yet, be sure to clean and polish the hull and other fixtures on the craft. Most marinas or boat dealers can provide material designed to care for your boat, whether fiberglass, wood or aluminum. Repaint where necessary, shine and polish all the metal using a good grade of cleaner. Regular and proper maintenance of the hull and other fixtures will pay dividends in the long run and thus

become a good investment.

Be sure and check your steering cables. Don't take a chance of losing your steering in the middle of your favorite lake, simply because you failed to replace a worn or frayed steering cable. And while you're at it, make sure your running lights are working properly. In fact, now is a good time to inspect the entire electrical system in your boat, including the battery.

If it's a conventional battery, be sure the cells are topped off with distilled water so that the plates don't sulphate. And remember, you should have charged your battery before putting it in winter storage, once more during storage and again before fitting it out in the spring. It should be stored by placing it on a

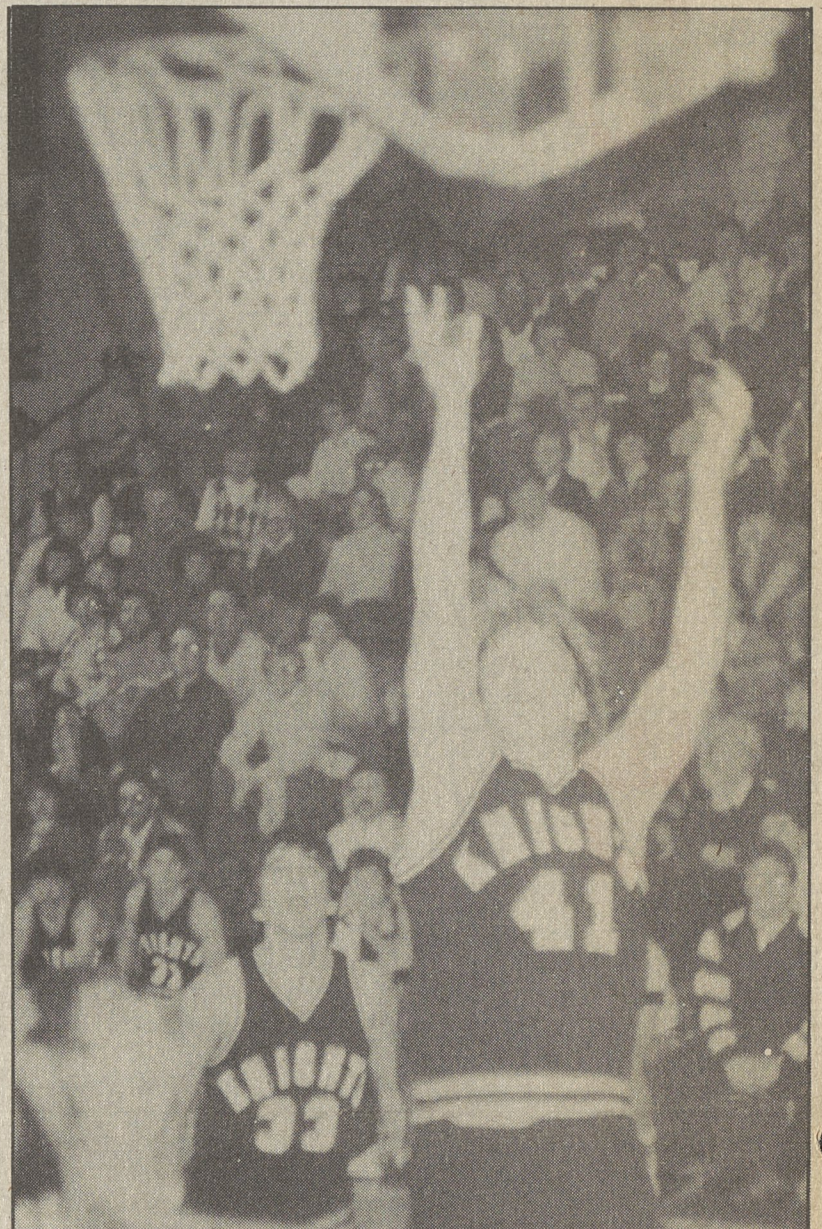
wooden board; don't set it on a concrete floor or metal surface.

A few other items to check would include the fire extinguisher (be sure it's fully charged), inspect your personal flotation devices for tears, broken buckles and frayed straps.

Post boat add 1

If after completing these and other chores you still have that itch...how about planning a cruise for next summer, perhaps a new area in the state you've never visited.

For more information on boating and where to go, write to the Bureau of Waterways, Pennsylvania Fish Commission, P.O. Box 1673, Harrisburg, PA 17105-1673.



Dallas Post/Ed Campbell

Reach for the stars

Marty Onzik of the Lake-Lehman basketball team looks almost as if he is all alone as he hits on a short jumper in a recent Wyoming Valley Conference game against Back Mountain rivals, the Dallas Mountaineers. Onzik scored three more points for a total of five but the Black Knights fell short, 46-33. (Story, additional photos, page 9)

**PENNSYLVANIA
1983-1984 HUNTING SEASON**

Species	Season	Daily Limit	Field Possession Limit
Small Game			
Squirrels, Gray, Black, Red and Fox (combined)*	Oct. 15-Nov. 26 AND Dec. 26-Jan. 7, 1984	6	12
Ruffed Grouse (statewide)*	Oct. 15-Nov. 26	2	4
(statewide)*	Dec. 26-Jan. 7, 1984		
(in 55 counties)*	Jan. 9-Jan. 28, 1984		
Rabbits, Cottontails*	Oct. 29-Nov. 26 AND Dec. 26-Jan. 7, 1984	4	8
Ring-necked Pheasants, males only (except in designated areas)*	Oct. 29-Nov. 26	2	4
-both sexes in designated area*	Dec. 26-Jan. 7, 1984		
Bobwhite Quail (in 54 counties)*	Oct. 29-Nov. 26	4	8
Raccoons (hunting—Pa. residents)*	Nov. 7-Jan. 31, 1984	Unlimited	
(hunting—nonresidents of Pa.)*	Dec. 7-Jan. 31, 1984		
Wild Turkey—Management Area No. 1*	Oct. 29-Nov. 19	1	1
—Management Area No. 2*	Oct. 29-Nov. 12		
—Management Area No. 3*	Closed to Fall hunting except open Crawford County		
—Management Area No. 4*	Oct. 29-Nov. 12		
—Spring Gobbler Season (Bearded Birds)	Closed to Fall hunting		
Only, Statewide	Apr. 28-May 19, 1984	1	1
Hares (Showshoe Rabbits) or Varying Hares	Dec. 26-Dec. 31	2	4
Woodchucks (groundhogs)*	Sept. 1-Aug. 31	Unlimited	
Sunday hunting prohibited			
Big Game			
Bear—by individual	Nov. 21-Nov. 22	1	1
Bears, by hunting party of 3 or more*	Nov. 21-Nov. 22	3	3
(Deer, Archery Season, any deer—Statewide)	Oct. 1-Oct. 28		
(Deer, Antlered, with 2 or more points to an antler or a spike 3 or more inches long)	Dec. 14-Dec. 17		
(Deer, Antlered, and Antlerless with required antlerless license. Special Regulations Areas listed below*)	Nov. 28-Dec. 10		
(Deer, Antlerless—Statewide)	Nov. 28-Dec. 17	1	1
(Deer, Antlerless—Statewide)	Dec. 12-Dec. 13		
(Deer, Flintlock Season, any deer—Statewide)	Dec. 14-Dec. 17		
Furbearers and Predators—Hunting			
Foxes—Red and Gray*	Nov. 7-Feb. 29, 1984	Unlimited	
Skunks, Opossums, Weasels, Coyotes*	Sept. 1-Aug. 31, 1984	Unlimited	
Non-Game Birds			
Crows (Hunting on Fridays, Saturdays, Sundays only)	Sept. 2-Nov. 20	Unlimited	
	Dec. 30-Apr. 15, 1984		
	June 1-Aug. 26, 1984		
Trapping			
Skunks, Opossums, Foxes, Weasels, Coyotes (traps)*	Nov. 7-Jan. 31, 1984	Unlimited	
Raccoons (traps—Pa. residents)*	Nov. 7-Jan. 31, 1984	Unlimited	
Raccoons (traps—nonresidents of Pa.)*	Dec. 7-Jan. 31, 1984	Unlimited	
Minks*	Nov. 24-Dec. 24	Unlimited	
Muskrats (traps only)	Nov. 24-Dec. 24	Unlimited	
Beavers (traps only—statewide)	Dec. 26-Jan. 29, 1984	5	5

NO OPEN SEASON—Elk, Otters, Hungarian Partridges, Sharp-tailed Grouse, Bobcat or Wildcat. NO CLOSE SEASON—Chukar Partridges (except during general firearms seasons for big game). FALCONRY SEASON—Details of this season will be disseminated to licensed falconers. *Contact the Pennsylvania Game Commission for further regulation rules on this species.

DALLAS POST & MOUNTAIN TOP EAGLE

BUSINESS AND SERVICE DIRECTORY

“Where to get it - Where to have it done”

SPECIAL 13 Week Contract Rate 15% Off Our Regular Rate

Ads Must be Prepaid

\$2.12" - 1 Paper
\$3.60" - Both Papers

1x3 13 Weeks \$82.68
Only \$6.36 A Week
1 Paper

or

1x2 13 Weeks \$55.12
Only \$4.24 A Week
1 Paper

or

\$140.40
Only \$10.80 A Week
Both Papers

1x1 13 Weeks \$27.56
Only \$2.12 A Week
1 Paper

or

\$46.80
Only \$3.60 A Week
Both Papers

2x2 13 Weeks \$110.24
Only \$8.48 A Week
1 Paper

or

\$187.20
Only \$14.40 A Week
Both Papers

Copy Changes Allowed

Read The Classifieds