

# People

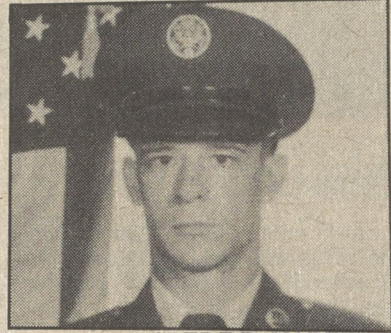
## Sue Hand's Imagery sponsors Art Show

Joe and Sue Hand of Sue Hand's Imagery in Dallas announce the Third Annual Suzanne Maria Rossetti Memorial Juried Art Show which will be exhibited at the Imagery March 30, 31 and April 1. The contest is open to all local students in grades 7-12 and honors the memory of a very special victim of violent crime.

The contest will be judged by three local artists. All entries must be delivered to Sue Hand's Imagery between March 19 and March 28. There is a limit of five entries per person and a size limit of 24"x36". All entries must be mounted, matted, or framed and identified on the back with name, grade, and category. No entry should have been entered in previous Rossetti contests.

Categories are: 1. watercolor; 2. oil and alkyd; 3. acrylic and egg tempera; 4. pencil and charcoal; 5. ink and scratchboard; 6. pastel and crayon; 7. mixed media; 8. calligraphy and lettering. There will be first, second, third, and honorable mention ribbons awarded in each category in each grade level, a total of nearly 200 prizes.

Only winning entries will be exhibited in the show. All entries must be picked up by April 7.



AIRMAN ROBERT P. MARTIN

### Martin ends basic training

Airman Robert P. Martin, son of Robert P. and Margaret B. Martin of 472 N. Pennsylvania Ave., Wilkes-Barre, has been assigned to Lowry Air Force Base, Colo., after completing Air Force basic training.

During the six weeks at Lackland Air Force Base, Texas, the airman studied the Air Force mission, organization and customs and received special training in human relations.

In addition, airmen who complete basic training earn credits toward an associate degree in applied science through the Community College of the Air Force.

His wife, Dawn, is the daughter of Daniel and Beatrice Gallagher of 111 School St., Shavertown.

The airman is a 1977 graduate of Coughlin Senior High School.



### Junior Women meet

The Dallas Junior Woman's Club recently held its annual Christmas part-business meeting at the Castle Inn, Dallas. An initiation ceremony was conducted following the dinner. New members inducted into the club are shown in the photo at left. From left, Valerie Gialanella, membership chairman; Denise



Witek, new member; Karen Klemow, new member; and Kathie Oravitz, club president. The photo at right shows Carol Kristan, left, Member of the Month, with membership chairman Valerie Gialanella. Carol, who is first vice president of the club and program and housing chairman, was presented with a small decorated Christmas tree. Kathie Oravitz is club president.



### Volunteers honored

The Board of Directors of Parents Anonymous of Northeast Pennsylvania recently honored its volunteers at a Recognition Dinner held at the Knights of Columbus Home, Wilkes-Barre. The individuals honored had served the agency for one year or more and received Certificates of Appreciation from the board. Shown here are the honorees and board officers. From left, seated, Virginia Davis, Dallas; Robert Ellsworth, Kingston; and Joan Luke, Port Griffith. Standing, Charles Leo, Wilkes-Barre; Mrs. Trudie Kertulis, Swoyersville, board president; Mrs. Charles Bedwick, Wilkes-Barre, executive director; and John McCutcheon, Dallas. Parents Anonymous maintains three chapters in the area in Wilkes-Barre, Kingston and Hazleton. A fourth chapter is planned for the Back Mountain area.

## Resource directory published

A seven county directory of services for children and parents, A Directory of Resources for Parents, has been completed by the Parenting Council of Northeast Pennsylvania, Inc.

Developed as a means to coordinate services and programs for parents and children, the Directory serves as a guide to parenting classes, support groups, counseling services, educational materials, financial and legal aid, health services, family activities, and other services of interest to parents.

The Directory also lists hotline and toll-free numbers; sources of information, support groups and listings of materials from the Parenting Council Resource Room. The indices provide information on types, range and amount of services for parents in each county.

Copies of the directory may be purchased from Maternal & Family Health Services, Inc. for \$3. Make checks payable to MFHS and mail to 936 Market St., Kingston, Pa. 18704. Copies are available at libraries, hospitals and schools.

**33 1/3**  
TO  
**50%**  
OFF  
ON ALL  
FALL & WINTER  
MERCHANDISE

**THE CASUAL MAN**

UNITED PENN PLAZA  
KINGSTON  
Daily 10-5  
Mon. & Thurs. Til 8  
PHONE (717) 283-2125  
MasterCard•Visa•Am. Ex.

**LARRY S. KEISER**  
attorney-at-law

is most pleased to announce the relocation of his offices for the general practice of law to

**33 West South St.  
Wilkes-Barre, PA**

telephone: (717) 822-2929 (office)  
(717) 288-2929 (residence)

Mailing Address:  
P.O. Box 22  
Wilkes-Barre, Pa 18703

**DR. RICH SWENSKI**  
ANNOUNCES THE CHANGING OF HIS OFFICE HOURS TO:

**MON. 8 A.M. THRU 1 P.M.**  
**TUES. 12 P.M. THRU 5 P.M.**  
**WED. 12 P.M. TO 7 P.M.**  
EFFECTIVE JANUARY 16, 1984

**BY APPOINTMENT ONLY —**  
32-34 EAST MAIN ST., GLEN LYON, PA.  
PREVENTATIVE MEDICINE  
DIET, WEIGHT CONTROL, BODY BUILDING  
**736-6541**

**DYMONDS FARM MARKET AND BAKERY**  
Memorial Highway, Lower Demunds Rd.  
Shavertown • Phone 675-1696

WEEKLY BAKERY FEATURE  
**APPLE PIE \$3.45**  
Reg. \$3.95 SAVE 50c

**ORDER YOUR PERSONALIZED BIRTHDAY CAKE**  
Layer or Sheet in Several Sizes

WEEKLY PRODUCE SPECIAL  
**TOMATOES lb. 59¢**

- Spices
- Jams
- Butter
- Baking Items
- Milk
- Fresh Produce
- Bulk Foods
- Eggs
- Jellies

Stop in and see our new "Wagon Load" of Candy  
**OPEN 7 DAYS A WEEK AT 8 A.M.**  
BAKERY ITEMS AVAILABLE AFTER 9 A.M.

Betty McDonald  
OWNER

**NUMBER 9 SHOP**  
9 W. Northampton St.  
(corner S Franklin St.)  
Wilkes-Barre, Pa. 18701  
Phone. 825-2024

IMPORTED CLOTHES  
JEWELRY — ACCESSORIES

• WINTER CLEARANCE  
1/3 - 1/2 off

• CRUISEWEAR  
Arriving Daily

**Have A News Tip?  
Call 675-5211**

**HOME ST.**

New address?  
WELCOME WAGON® can help you feel at home.

Greeting new neighbors is a tradition with WELCOME WAGON — "America's Neighborhood Tradition."

I'd like to visit you. To say "Hi" and present gifts and greetings from community-minded businesses. I'll also present invitations you can redeem for more gifts. And it's all free.

A WELCOME WAGON visit is a special treat to help you get settled and feeling more "at home." A friendly get-together is easy to arrange. Just call me.

**675-2070**  
Welcome Wagon

## Residents invited to vote for medical award winner

County residents and civic and service organizations were invited recently to nominate candidates for this year's Luzerne County Medical Society Benjamin Rush Awards.

William Boyle, M.D., President of the Luzerne County Medical Society, said the awards program is aimed at selecting a lay person and a voluntary organization contributing outstandingly to community health and welfare. The two award recipients will receive recognition in March at an awards event for their voluntary health service to the community. Benjamin Rush Award plaques are presented as tangible expressions of this recognition.

Recipients of the two county awards will be nominated for the Benjamin Rush Awards made annually on a statewide basis by the Pennsylvania Medical Society.

Nominations for this year's Luzerne County Medical Society awards program close Feb. 3. Dr. Boyle said nomination forms are being sent to civic and service organizations so that deserving persons and groups may be brought to the attention of the selection committee.

Additional forms are available from the Luzerne County Medical Society office at 150 South Franklin Street or at County, Public and College libraries.

"The awards," Dr. Boyle said, "offer us an opportunity to encourage and say 'thank you' to outstanding persons and organizations who have voluntarily given time and effort to improve the health standards of our area. We're glad to have such persons and groups as our partners in this important work."

- Pregnancy Terminations to 14 Weeks
- Confidential Pregnancy Counseling
- One Visit & Follow-Up

**Office of Salomon Epstein, M.D.**  
SHE Southern tier women's services

Binghamton Plaza 607-772-8757

**Suburban Propane**

Professional  
**PROPANE GAS SERVICE**

- Cylinder Delivery
- Bulk Service

Home — Commercial — Farm  
Industrial — Camper & Grill Refills  
Motor Fuel — Construction Heat

**GAS APPLIANCE and EQUIPMENT SALES & SERVICE**  
Installation and Service by Experienced LP-gas Personnel

Mobile Home and Park Service  
**654-4624**

**Suburban Propane**  
242 N. Main St. Pittston, Pa. 18640

**NOW OPEN**  
**Creative Designs For Stitchery**  
409 Lackawanna Ave.  
Olyphant 489-3529

Stitchery • Needlepoint • Crewel  
Cross Stitch • Candlewicking • Kits  
• Frames & Supplies

Also Visit  
The Ladies Clothes Corner | exclusively ours  
Soft Sculpture Dolls

Open Mon. thru Thurs. 9 to 7 — Fri. 9 to 9 — Sat. 10-3

GLORIA & PAT • DMC • NEEDLES 'N HOOP • LEISURE ARTS

MINERVA CARON • GRAPHIGUE • CROSS STITCH ORIGINALS

DMC • NEEDLES 'N HOOP • LEISURE ARTS • COLUMBIA • SUNSET • COLUMBIA • EUGENE CHERNIN