

# Business

## C of C drive begins

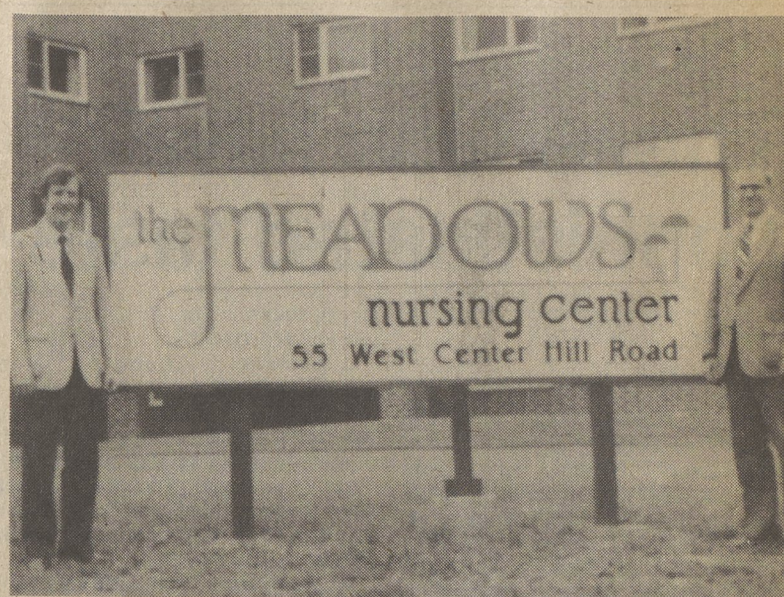
John McNelis, Bell of Pennsylvania and Chairman for the Greater Wilkes-Barre Chamber of Commerce 1983 Star Team, announced recently that 50 people will participate in this year's sales blitz.

Participants include Rick Allan, Allan Industries; Sandy Bartosh, Kidder Peabody; Bob Brittan, PG&W; Joseph Butcher, PG&W; Gerald Calderone, Friedmans Express, Inc.; James Campbell, Penn State University; Terry Casey, Sr., Penn East Real Estate Co.; Steve Cicak, Atlantic Insurance Services, Co.; Eileen M. Connolly; Mike Cook, Merrill Lynch; Dave Davis, The Times Leader; Michael Demko, United Penn Bank; Anthony Dombroski, N.E. PA Red Cross; David Drasin, Prudential-Bache; Michael Duricko, United Penn Bank; Bob Ell, King's College; Don Gaetono, MONY; Carl Goeringer, Jr., Century 21 Real Estate; Fred Hartwigen, UGI Corporation.

Also, Joseph Hunt, Patient Care Corp.; Clayton Karambelas, C.K. Coffee Service; Joseph Krinck, Krinck Catering; Peter Mailloux, InterMetro; William Mainwaring, First Eastern Bank; Andrew Mamary, A&M Supply; Robert Mason, United Penn Bank; Ron Maturi; Norris McGowan, UGI Corporation; Bernie Mengerhausen, United Penn Bank; George Moses, Mozip Sign; Diane Myers, League of Women Voters; Bill Newman, United Penn Bank; Richard Santee, PG&W; Louis Shaffer, Esq.; Lynn Sheehan, American Bell; George Shore, Cardillo-Shore Associates; Bernie Slusarz, First Eastern Bank; Peter Steve Jr., Custom Management Corp.; George Stozenski, PP&L; Delores Temerantz, A&M Supply; Marjorie Trethaway, Franklin First Federal Savings & Loan; Carl Urbanski, O.D.; and Gary Williams, First Eastern Bank.

The Star Team consists of Chamber members who will work on a two-day telethon blitz at King's College in an effort to raise the total membership of the Greater Wilkes-Barre Chamber of Commerce to 1,000 members.

The Star Team participants will meet at King's College on Oct. 13 and 14 where they will place over 2,000 telephone calls to prospective new members.



### New sign displayed

Flanking the new sign at the Meadows Nursing Center, Dallas, are Thomas J. Sweeney, left, Nursing Center Administrator; and Raymond Condo, Executive Director of EEI.

## New sign at Meadows

The Meadows Nursing Center, Dallas, got its name in lights as workmen recently completed installing a 3 1/2'x10' illuminated sign in the foreground of the Center's front entrance. The sign, which can be seen easily from Route 415 and West Center Hill Road, displays the distinctive green "Meadows" logo that has become the symbol of both the Nursing Center and the adjacent Meadows Apartments.

Situated directly across from College Misericordia, the Nursing Center opened officially on Aug. 31.

At present it has reached one third occupancy of its 120 beds. The Nursing Center is a facility for skilled and intermediate nursing care on a long-term basis.

Both the Nursing Center and the Apartments are owned and operated by Ecumenical Enterprises, Inc. (EEI) - a local non-profit corporation sponsored by the First Presbyterian Church of Wilkes-Barre, the Roman Catholic Diocese of Scranton, the Jewish Federation of Greater Wilkes-Barre and the Metropolitan Lutheran Council of Wyoming Valley.

## Wint, Townend attend seminar

Walter E. Wint of Wilkes-Barre and Frank Townend of Dallas Township joined 140 other county emergency management executives at the 1983 Annual Conference conducted by the Pennsylvania Emergency Management Agency in Wilkes-Barre, Sept. 12-14.

The three-day conference is an annual meeting of county, state and federal emergency management personnel to review community disaster preparedness programs in the Commonwealth.

Federal, state and county officials addressed a range of subjects including federal policies and perceptions of emergency management. Workshop topics included community hazard and vulnerability analysis, a review of Pennsylvania Hazardous materials plan and fire safety education programs.

The conference was federally funded by the Federal Emergency Management Agency with all costs for attendance by County officials reimbursed.

## Behlke is Securities representative

Robert Behlke, of 182 Parrish St., Dallas, has become a registered representative of Lutheran Brotherhood Securities Corp. (LBSC).

As a registered representative,

Behlke is now qualified to sell the five mutual funds distributed by LBSC. LBSC is a subsidiary of Lutheran Brotherhood, a fraternal insurance society. Both corporations are headquartered in Minneapolis.



### New employees

Shown above at a recent orientation session of new employees at the Meadows Nursing Center, are from left, first row, Brenda Button, Dallas; Kathy Haggerty, Plains Twp.; Carolyn Graham, Wilkes-Barre; Mrs. Harding; Gloria Smith, LPN, Dallas; and Judy Truesdale, Meshoppen; second row, Dale Leach, Hunlock Creek; Carolyn Sperrazza, Wilkes-Barre; Robert Backley, Wanamie; Robert Stefansky, Wilkes-Barre; Carole Shingler, Meshoppen; Tina Bevan, Tunkhannock and Elizabeth Jones, Noxen.

## Meadows adds 12 employees

Twelve new people joined the Meadows Nursing Center staff on Sept. 26 and were assigned directly to nursing care duties.

The new personnel, all of whom have had previous nursing home experience, received instructions in the Center's policies, procedures, and services from Mrs. Judith Harding, R.N. Director of Nursing and Mr. John Muth, Director of Personnel.

Nursing Center Administrator Thomas J. Sweeney noted that the additional personnel bring the total full-time and part-time staff to 75. Of the 12 new additions, six come from the Back Mountain Area.

The Meadows Nursing Center is a facility for skilled and intermediate nursing care and accepts short and long-term patients. It is owned and operated by Ecumenical Enterprises, Inc. - a local non-profit corporation sponsored by the First Presbyterian Church of Wilkes-Barre, the Roman Catholic Diocese of Scranton, the Jewish Federation of Greater Wilkes-Barre, and the Metropolitan Lutheran Council of Wyoming Valley. Attorney Sol Lubin is President of EEI.

prises, Inc. - a local non-profit corporation sponsored by the First Presbyterian Church of Wilkes-Barre, the Roman Catholic Diocese of Scranton, the Jewish Federation of Greater Wilkes-Barre, and the Metropolitan Lutheran Council of Wyoming Valley. Attorney Sol Lubin is President of EEI.

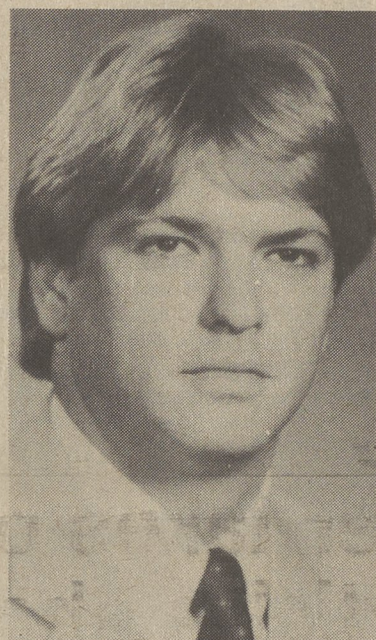
## CEO administers Operation Share

UGI Corp. has said it has selected the Commission on Economic Opportunity to administer its Operation Share fund in Luzerne County.

Operation Share is an emergency fund that UGI established in August with an initial company contribution of \$50,000 to help its needy residential customers finding themselves unable to pay their energy bills, due to a crisis situation. Beyond the initial contribution, UGI will contribute one dollar for each two dollars contributed to the fund by customers and company employees up to \$25,000. This fund will be allocated to the Gas and Electric Utility Divisions in proportion to the number of customers in each division.

Fred Hartwigen, UGI's manager of consumer relations, said CEO, located at 211 South Main Street, Wilkes-Barre, is prepared to begin accepting and processing applications for the energy grants this week.

"Applications must be made in person," Hartwigen noted, "as none will be accepted by phone." Both residential heating and non-heating customers of UGI are eligible for the financial assistance. Under Operation Share, one-time grants of up to \$200 may be awarded to electric heating customers and up to \$50 may go to persons using electricity for other than heating purposes in the home.



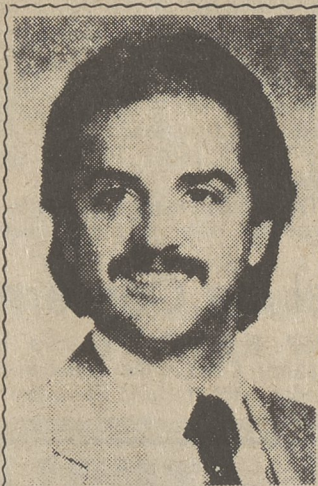
GARY S. BAKER

## Gary Baker is certified

Gary S. Baker, manager of Back Mountain Wood Stoves, Lehman, recently received certification as a Solid Fuel Safety Technician. Baker's certification, assigned by the Wood Heating Education and Research Foundation, Washington, D.C., applies to the safe and proper installation of all wood and coal stoves and their chimneys.

The testing material used by the Wood Heating Education and Research Foundation was in conjunction with The American Insurance Association, The Tennessee Valley Authority, The National Chimney Sweeps Guild, The U.S. Consumer Product Safety Commission, The American Vocational Association, and The Wood Heating Alliance.

Baker, who is starting his sixth year as manager of Back Mountain Stoves, feels the Solid Fuel Safety Technician Program is a positive step for the residents of Northeastern Pennsylvania. He is available for participation in seminar and safety programs involving the safe and proper installation and maintenance of all wood, wood-coal, and multi-fuel burning equipment. He is also available for private inspection work.



KR. KURT J. MOODY

Doctor Kurt J. Moody has recently joined the practice of Joseph Pugliese Eye Clinic, at 601-605 Wyoming Avenue, Kingston.

Doctor Moody's practice involved the Optometric care in the specialty of contact lens fitting, sports vision, and general Optometry.

He is a graduate of Wyoming Valley West High School and Wilkes College; and a recent graduate of the Pennsylvania College of Optometry in Philadelphia, where he became a life member of the Beta Sigma Kappa Honorary Fraternity.

Doctor Moody has served several internships, these included: the Eye Institute of the Pennsylvania College of Optometry; Veteran's Administration Medical Center; and Biernacki Eye Associates. He is also a member of the Northeastern Pennsylvania Optometric Association, the American Optometric Association.

Doctor Moody is the son of Mr. and Mrs. Fred B. Moody of Forty Fort. He currently resides in the Forty Fort area.

## Stockholders call meeting

Directors of First Eastern Corp. have called a special meeting of stockholders for Wednesday morning, Oct. 26 at 9:30 at the Gus Genetti Motor Inn, Wilkes-Barre.

Richard M. Ross, Jr., president and chief executive officer, said the general purpose of the matters to be considered at the special meeting is to "insure that the First Eastern Corp. and its principle asset, First Eastern Bank, N.A., continue to be the types of organizations that the stockholders, directors and officers want them to be."

Ross said stockholders are being asked to consider and vote on a proposal that would increase the authorized stock to 15 million shares. The stock would consist of five million shares of no par value preferred and 10 million shares of \$10 par value common stock. There are presently outstanding 964,883 shares of common stock.

"The additional authorized stock will give us the resources we needed to acquire other compatible financial institutions as well as raise capital on a basis that is fair to the present stockholders," Ross explained. He added that with the additional authorized common stock available the directors have decided to consider a 50 percent stock dividend payable to stockholders early in 1984.

"There are no plans for any mergers or for raising additional capital at the present time," Ross added.

## Dividends declared

Harold J. Rose, Jr., President and Chief Executive Officer of the Wyoming National Bank of Wilkes-Barre, has announced that the Board of Directors has declared a third quarter dividend of 50 cents per share on its common stock outstanding. This dividend is an increase of five cents over the previous quarter.

This dividend is the 375th regular dividend declared by the Wyoming National Bank.

The main offices of the Wyoming National Bank are located on West Market Street in downtown Wilkes-Barre. The bank also maintains 10 branch offices.

## DEMOCRATS & REPUBLICANS

Re-elect

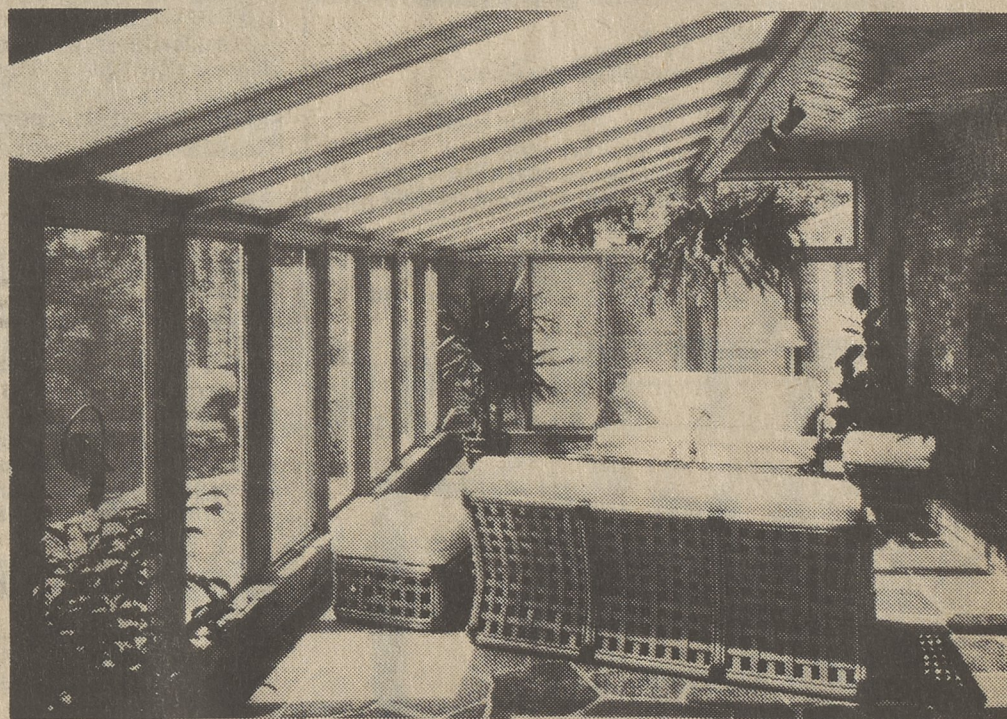
# MICHAEL L MORREALE

LUZERNE COUNTY TREASURER

His record speaks for itself

Paid by Committee to Re-elect Michael L. Morreale

Introducing the Pella sunroom  
...a greenhouse to live in.



Pella's exclusive features and passive solar design reduce your winter fuel bills by trapping the sun's warmth. Pella's ventilating windows help keep you cool in the summer. Many sizes and styles...no exterior maintenance.

**FREE ESTIMATES**  
VISIT OUR WAREHOUSE/SHOWROOM  
Dunham Drive, Dunmore (Exit 1 off I-380)

# PELLA

## WINDOWS, DOORS & SKYLIGHTS

9:00 a.m. - 5:00 p.m. (Mon. - Fri.)  
6:30 - 9:00 (Tues., Thurs. Eve.)  
9:00 a.m. - 1:00 p.m. (Sat.)

Scranton: 346-7722

Long-distance:  
(800) 982-4027

