

Check Out Our Advertisers' Home Improvement Specials

Plan ahead so you'll be decked out for summer

A new deck can do wonderful things for your home's appearance and your outdoor lifestyle. But before you dive into the project, take time out to do some thoughtful planning. Your project will go quicker in the long run, and you'll be happier with the results.

First, analyze your needs. What's the main purpose of the deck? Is it for sun worship or dining al fresco, to dress up an entry or provide a private getaway?

Knowing the deck's function is essential to a good plan. You may find you need several areas or levels—one for entertainment and outdoor cooking, one for sunning.

While rectangular and square decks are easiest to build, the simplest design may not be the best for you. Multiple levels can add more flair and function than one large platform in some situations.

Stake out the deck
Begin by drawing to scale on graph paper a top and side view of the house. Include major landscaping, driveways, doors, and location of utility lines underground.

Then lay out the deck on paper. Try to design it in increments of 2 feet since lumber comes in these even lengths. It

will save you a lot of sawing and extra expense.

Now go outside with tape measure and 1x2 stakes and lay out the deck on the site. Determine width, then length and height by measuring the side of the house and marking where you want the top of the decking.

Tap stakes into the ground along the house where the ledger strip will go and at points somewhat beyond the exact points where posts will be placed. Mark the string with a felt pen exactly at the posts positions.

Check for square

To check the corners of the deck for square, use this simple surveying procedure with two fixed lines forming a right angle. This will be your guide for measurements.

Line #1 is always parallel to the house or other structure the deck is built against. If the deck will be detached, just run a straight line along one edge of the proposed site. Line #2 will intersect line #1 (see drawing).

Take three stakes and a nylon line and lay out a triangle. Line #1 should be 8 feet long, parallel to the wall. Stake the line at points A and B. Line #2 also connects to

stake A, running to a point C' from A. Attach the line to point C several feet beyond.

Check the distance from stake C to stake B, the hypotenuse of the right triangle. When its measurement is exactly 10 feet, your corner will be square. Double check

Select materials

Your next decision is what kind of wood to use. We recommend pressure treated lumber for all your outdoor project needs. Why? Several reasons: low cost, low maintenance, resistance to decay and

and hot-dipped galvanized nails to resist stains.

Know the code

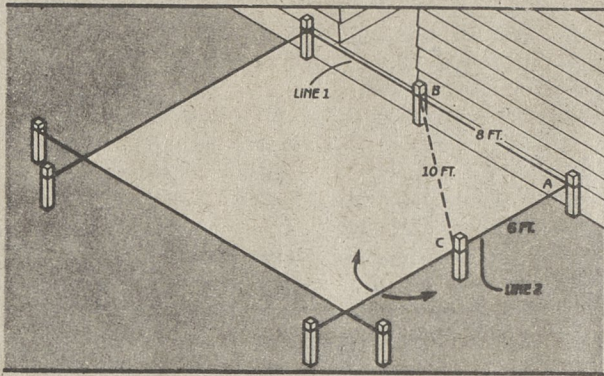
Also, don't forget to check your local building code before beginning construction to be sure you meet local requirements.

Be sure to follow manufacturer's instructions when using power tools. And, don't forget to wear safety goggles when using hammer or power tools.

Find the source

Your local Georgia-Pacific Registered Dealer can help you estimate the amount of lumber you will need for your plan and give you a copy of G-P's booklet, *Decks & Outdoor Projects*. Twelve pages that take you from the planning stages all the way to your first barbecue. Designs, diagrams and detailed instructions help you adapt any deck idea to your own home.

To find your nearest Georgia-Pacific Registered Dealer, call 1-800-447-2882 or write Georgia-Pacific, 133 Peachtree Street, N.E., Atlanta, GA 30303.



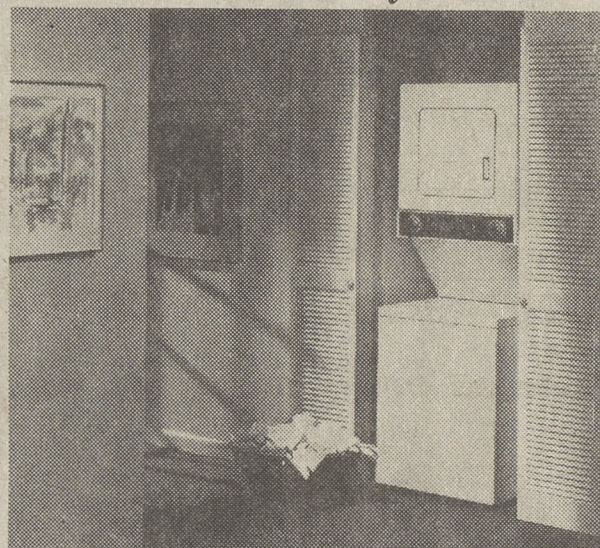
at stake A with a carpenter's square. Then, using stakes and string, lay out the entire deck, repeating the process to check each corner for square.

If building a detached deck, you can form line #1 by placing stakes along a line parallel to one edge of the deck site.

insects, handsome finish qualities, and workability.

A process which forces preservatives deep into the cells of quality lumber makes G-P pressure-treated lumber a solid choice for decking, joints and beams. And, it's essential to use only pressure-treated lumber for posts to resist decay. Use stainless steel fasteners

Convenient laundry center



THIS SPACE-EFFICIENT WHIRLPOOL Thin Twin Laundry System is designed for consumers who want their laundry center to be in a convenient part of the home. Only 24 inches wide by 71 3/4 inches high, with a depth of 27 1/4 inches, the Thin Twin Laundry System can be tucked into a spare closet, kitchen pantry, underneath a stairway, or in the bathroom. The washer and dryer controls are mounted on one attractive console in an easy-to-see and easy-to-reach location beneath the dryer.

filling gaps, plugging holes and making durable repairs to lawn furniture made from wood, metal and other materials. The fast-bonding putty sets in five minutes and reaches full strength in two hours. Cured material can then be drilled, tapped, sanded or painted.

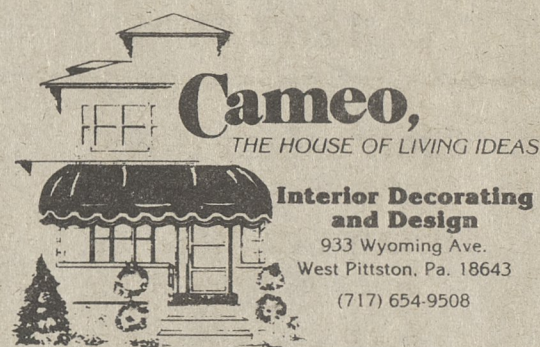
The lightweight, compact Un-Reel™ spool can easily fit into a shirt pocket or tool box to be readily on hand for other quick, emergency repairs. Devcon's Un-Reel™ is available at most hardware and home center stores.

The American workweek, which averages 35.6 hours, is the shortest in the world, according to the International Labor Organization.

The ILO reports that the majority of the world's workers put in more than 40 hours a week. Egypt has the longest workweek in the world at 56 hours.

Kitchen Remodeling
DO IT NOW!

Pick up your free Decorating Ideas Booklet at...



Anne Postupack, Assoc., A.S.I.D.
Mon. thru Fri. 10-5 Sat. 10-3

PVC FAN COLLECTION



Frame choices of vanilla, white or beige with the most graceful look of rattan along the arms make a statement of up-tic decorator styling. The cushions of textaline in a wide range of designer colors further enhance this group.

— Also Available —
'FLEUR DE LIS', 'CHIPPENDALE' & 'WOODLOOK'
This fashion Outdoor - Indoor Furniture is offered to you at a...

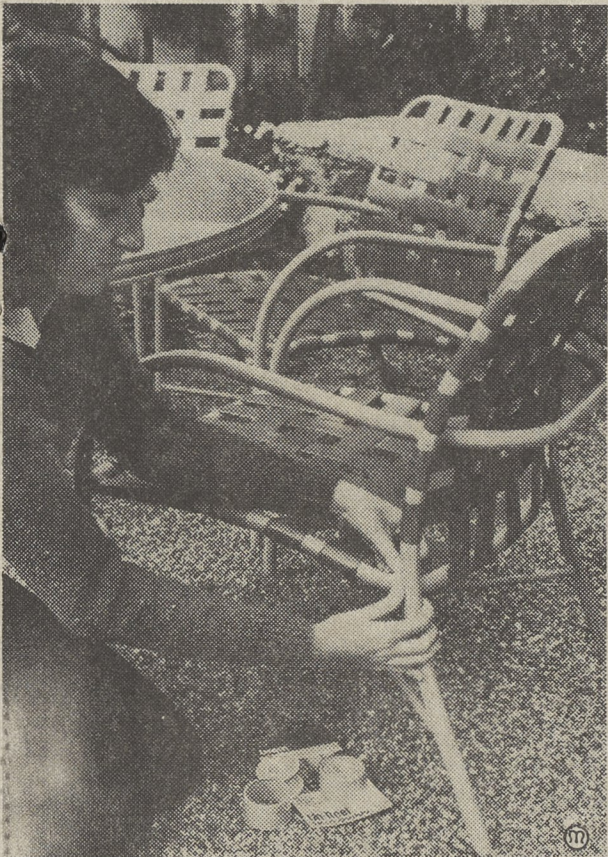
30% OFF RETAIL
Lahr's Nursery
phone 825-6064

Springtime repairs made easy for lawn and patio furniture

With springtime just around the corner, now is the time to get backyard equipment in shape. After the long winter, it would be wise to see how well lawn and patio furniture

Easy to use

Un-Reel™, a fast-curing epoxy putty on a handy pocket sized spool, features Devcon's



BACKYARD PICNICS AND BARBECUES are just around the corner, so now is the time to get your patio furniture in shape. To mend any holes or cracks that may have formed over the winter, use an easy-to-use epoxy putty such as Devcon's Un-Reel. The fast-drying adhesive sets in five minutes and can be drilled, tapped, sanded or painted.

weathered the storm and to make any necessary repairs. One of the best ways to repair furniture made from wood or metal is with epoxy. However, up until now, most epoxies have been difficult to work with and messy to use. New from the Devcon Corporation this season is an epoxy in putty form that makes backyard furniture repairs a snap.

5-Minute® Epoxy Putty in a new easy-to-use form. Simply tear or cut the needed amount from the spool, blend together between fingertips and apply to a clean dry surface. Both resin and hardener are layered together on the spool to make application easy, quick and clean.

Devcon 5-Minute® Epoxy Putty is extremely effective for

WANTED DIRTY CARPETS

CARPET CLEANING
WE MOVE FURNITURE



CALL RICH METCALF
RD No 2 Shickshinny

WE WILL CLEAN ANY 2 ROOMS OF CARPET IN YOUR HOME FOR

\$38

Each Additional Room \$16

(Coupon Expires 5/10/83)

Our ultra clean truck mounted unit is the latest, most efficient method of cleaning in service today. We guarantee our work!

WE USE GENUINE SCOTCH GUARD CARPET PROCTOR

UPHOLSTERY CLEANING SPECIAL
Regular Upholstered Chair..... **\$16**

A SATISFIED CUSTOMER IS OUR BEST ADVERTISEMENT
Commercial and Residential

Shickshinny Area Customers 256-3945
Wilkes-Barre Area 823-0434

Save...Save...on the Cream of the

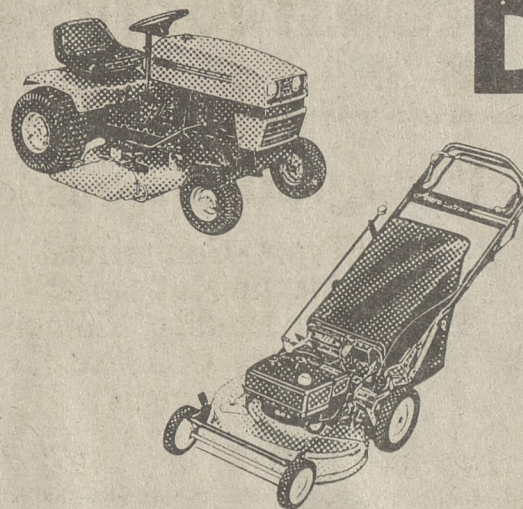
KROPP!

NO MONEY

DOWN!

FOR ANY

WALK-BEHIND TRACTOR OR RIDER MOWER



TAKE UP TO 36 MONTHS TO PAY!

ONLY KROPP OUTDOOR EQUIPMENT CAN MAKE THIS OFFER!
NO MONEY DOWN, 3 YEARS TO PAY, AND PAYMENTS AS LOW AS

\$14⁴⁶ A MONTH

Monthly payment based on average price of \$399⁰⁰ A.P.R. 18% or App. Credit. Payment varies depending on duration and price.

KROPP OUTDOOR EQUIPMENT

17 WEST 8th STREET
WYOMING, PA. 18644

PHONE
693-2308