

NORTHEAST PA



CAR CARE

Kingston Twp. Strategy Area Project

Kingston Township anticipates approval of bidding procedures for an extension of its Neighborhood Strategy Area Projects. The Township received \$250,000 for the three year project which includes drainage and paving work on a number of Trucksville streets.

Phase I of the project, already completed, was the installation of storm drains and catch basins on Hill, Maple, Holly and Hickory Streets, Elm Terrace, Cliffside Road and portions of Staub Road.

The paving portion of the project is due to begin about two weeks with completion scheduled for the fall. Addy Asphalt is subcontractor for the work for which Vincent Construction has the general contract.

Hill and Holly Streets, Elm Terrace and Staub Road are on the paving list. Reconstruction of portions of Elm Terrace, Maple Street and Cliffside Road are planned to change the grade for better drainage. Town-

ship manager, Mark Kunkle said there are no plans for paving Maple or Cliffside at this time. Hickory Street, also, remains questionable.

The Neighborhood Strategy Area Project is a three year grant from Luzerne County's Office of Community Development. Kingston Township received the total of its grant allowance at the beginning of the project in order to insure for better quantity and construction prices. In most cases the money is given in three year installments with portions of the project completed in phases.

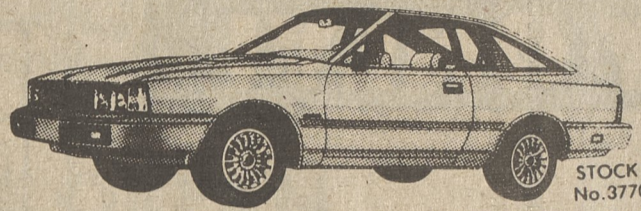
Kunkle explained that property owners in the project area have the option to apply for home rehabilitation loans.

A supplemental extension of the project to other areas of the defined neighborhood will be considered at the next supervisor's meeting scheduled for 8 p.m. on July 14. The Township will not be eligible for further funding of this nature until 1986.

1ST ANNIVERSARY SALE



Its Been A Year Since We Moved Into Our New Bigger Location And We're Celebrating! We're Offering Super Savings On Selected Datsuns In Stock!



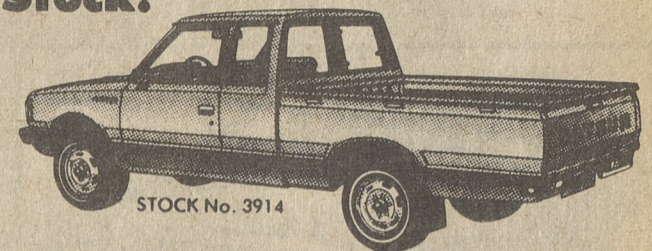
1982 DATSUN 200 SX HATCHBACK

5-Speed Transmission, Alloy Wheels, Rear Shade Kit, Good-year Wingfoot Tires, Body Side Mold Stripes, And More.

List Price \$9,239
Anniversary Discount -789
SUPER PRICE \$8,450*

MANY MORE CARS AND TRUCKS TO CHOOSE FROM!

*Prices Delivered Excluding Tax, Title And License Tags



1982 DATSUN KING CAB TRUCK

5-Speed Transmission, Air Condition, Power Steering, AM/FM Radio, Chrome Step Bumper, Side Molding, Jump Seats And More.

List Price \$9,254
Anniversary Discount -804
SUPER PRICE \$8,450*

FREE 5 YEAR — 50,000 MILE WARRANTY WITH ANY NEW CAR SOLD FROM STOCK DURING OUR ANNIVERSARY SALE

AUTOMOBILE CITY
(Div. of Fred Schulz, Inc.)
1280 Sans Souci Parkway, Wilkes-Barre, PA. 825-4581
HOURS: Mon.-Fri. 7:30 A.M.-8:00 P.M. Sat. 7:30 A.M.-2:00 P.M.

DATSUN WE ARE DRIVEN
PRODUCT OF NISSAN

NO BUM STEER

THERE ARE NO BARGAINS LIKE OUR CLEARANCE PRICED USED CARS!

Steel's Our Deal

SUMMIT STEEL RADIAL \$39⁹⁵

size P155/80R13 whitewall plus \$1.53 Fed. Ex. Tax

Try Us For Bias

SUMMIT SUPREME 120 \$28⁹⁵

size 6.00-12 whitewall plus \$1.43 Fed. Ex. Tax

OUR BESTSELLERS

SUMMIT STEEL RADIAL

- ★ Two steel belts
- ★ Polyester cord body
- ★ Whitewall styling

SUMMIT SUPREME 120

- ★ Smooth-riding polyester cord body
- ★ Bold white sidewall styling

Size	PRICE	F.E.T.
P165/80R13	\$46.95	\$1.74
P185/75R13	\$45.95	1.84
P195/75R14	\$47.95	2.18
P205/75R14	\$49.95	2.34
P215/75R14	\$51.95	2.48
P205/75R15	\$52.95	2.47
P215/75R15	\$54.95	2.59
P225/75R15	\$55.95	2.78
P235/75R15	\$60.95	3.01

Size	PRICE	F.E.T.
6.00-12	\$28.95	\$1.43
P165/80D13	\$28.95	1.46
P165/80D13	\$29.95	1.55
P175/80D13	\$30.95	1.59
P185/75D14	\$32.95	1.79
*P195/75B14	\$35.95	1.95
*P205/75B14	\$37.95	2.07
*P215/75B14	\$38.95	2.20

*Bias-belted construction

See the Neighborhood Professionals for Complete Car Care
Service Specials good through Saturday, July 17th.



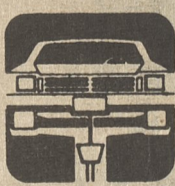
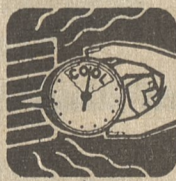
Electronic Ignition Engine Tune-Up

- 4 cylinder \$25
 - 6 cylinder \$30
 - 8 cylinder \$35
- Our Specialists:
• Install new spark plugs
• Adjust timing, carburetor and idle speed
• Check belts, hoses and battery
• Inspect emission control, starting and charging systems.

Add \$8.00 for cars with standard ignition

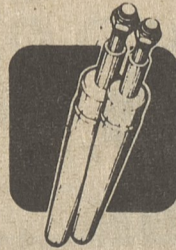
Auto Air Conditioner Recharge \$18⁹⁵

- Our Service Experts:
• Test for system pressure and leaks
• Inspect fan belts, compressor and hoses
• Add up to one pound of freon as needed



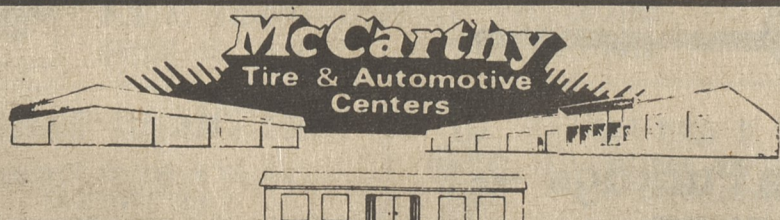
Oil Change, Lube & Filter \$12⁹⁵

- Our Lubrication Special Includes:
• A new oil filter made by Purolator
• Chassis lubrication to manufacturer's specifications
• Up to 5 quarts of Valvoline 10W40 multi-weight motor oil.



MacPherson Strut Replacement Cartridges \$99⁹⁵

- Additional charge for sea-ard strut assemblies
• Fits most import cars with MacPherson Strut Suspension Systems
• Completely self-contained and factory calibrated
• A product of Monroe Auto Equipment Company



WILKES-BARRE 340 KIDDER ST. OPEN DAILY - 8 A.M. TO 6 P.M. SATURDAY - 7:30 A.M. TO 3 P.M. 822-3151

KINGSTON 520 PIERCE ST. OPEN DAILY - 8 A.M. TO 6 P.M. SATURDAY - 7:30 A.M. TO 3 P.M. 283-0521

HAZLETON 23rd & CHURCH ST. OPEN DAILY 8 A.M. TO 5:30 P.M. SATURDAY - 8 A.M. TO 2 P.M. 455-4968

Get Set for Summer Travel! Jack Williams is ready with a SUPER SALE!

BFGoodrich 5-RIB, STEEL-BELTED RADIALS LIFESAVER XLM WHITEWALLS

Top-of-the-line steel-belted radials, engineered, designed, and sized for today's domestic and imported cars, from sub-compacts to luxury sedans. Unique tread design for quiet ride, superior traction, long mileage. Radial construction. Two full steel belts and sturdy polyester cord body provide impact protection and stability. Raised white stripe.

AS LOW AS **\$44⁷²**

Size P155/80R-13 Plus \$1.53 F.E.T.

SIZE	PRICE	F.E.T.	TOTAL*
P155/80R-13	\$44.72	\$1.53	\$46.25
P175/80R-13 (7 Rib)	48.22	1.78	50.00
P185/80R-13	52.58	1.92	54.50
P195/70R-13	50.52	1.98	52.50
P175/75R-14	47.17	1.83	49.00
P185/75R-14	51.96	2.04	54.00
P195/75R-14	56.32	2.18	58.50
P205/75R-14	58.91	2.34	61.25
P215/75R-14	60.02	2.48	62.50
P225/75R-14 (6 Rib)	64.07	2.68	66.75
P205/75R-15	61.28	2.47	63.75
P215/75R-15	63.41	2.59	66.00
P225/75R-15	65.72	2.78	68.50
P235/75R-15 (7 Rib)	70.74	3.01	73.75
P235/75R-15 (XL 7 Rib)	73.04	2.96	76.00

*ALL PRICES INCLUDE FEDERAL EXCISE TAX, MOUNTING, AND BALANCING.

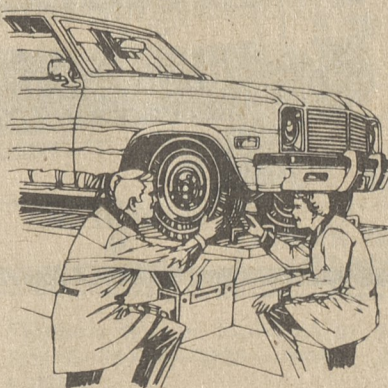


PROFESSIONAL ALIGNMENT

For Improved Handling and Longer Tire Wear

SPECIAL AT **\$13⁹⁵** Most Cars

Includes complete check and adjustment of caster, camber and toe-in.



COMPUTERIZED SPIN BALANCING \$6⁹⁵
Two Front Wheels

REMINDER! PA. STATE INSPECTION STICKER NO. 4 EXPIRES JULY 31, 1982

Every car has a friend at... **JACK WILLIAMS TIRE & AUTO SERVICE CENTERS**

BERWICK Front Street, Route 11 Phone: 759-0376
WILKES-BARRE Route 315, Wilkes-Barre/Scranton Hwy. Phone: 829-1991
KINGSTON S. Wyoming Avenue, Narrows Phone: 283-0551

BATTERY CHARGE IT! HEADQUARTERS



Top Performance Maintenance-Free



do it right

LEAVE THE SERVICING TO US...