

# 4 WEEKS \$100

★ 15 WORD MAXIMUM ★

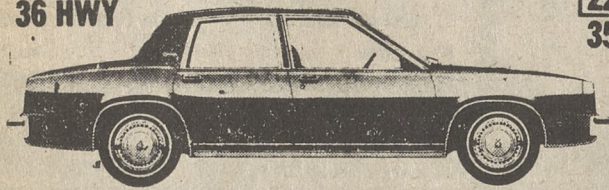
**RUN YOUR CLASSIFIED AD IN**  
*The Dallas Post*  
**AND GET FAST RESULTS**  
**TELEPHONE 675-5211 TODAY!**  
**CLASSIFIED DEADLINE THURSDAY 12 NOON**

## OLDSMO — DEALS YOU'LL NEVER SEE AGAIN!

**WE PURCHASED THESE BRAND NEW 1981 MODELS FOR LESS FROM THE FACTORY. WE'LL PASS THE SAVINGS ALONG TO YOU DURING THIS SPECIAL SALE.**

**\$6987\* \$6526\***

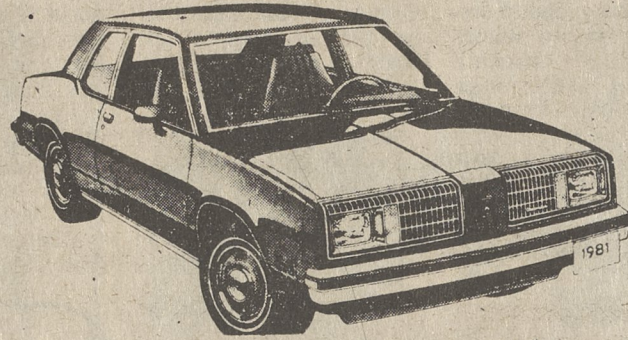
EPA: **24**CITY  
36 HWY



### 1981 OLDSMOBILE OMEGA

4 cyl., automatic transmission, power steering, power brakes, AM radio, body side moldings, rear defroster, remote mirror, accent stripe, rally wheels, wsw radials. Stock # 4430, # 4420, # 4419.

EPA: **22**CITY  
35 HWY

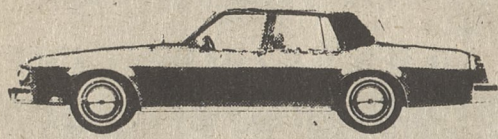


### 1981 OLDSMOBILE OMEGA CPE.

4 cyl., rear defroster, sport mirrors, power steering, trim rings, Stock # 4473

**\$8361\* \$7550\***

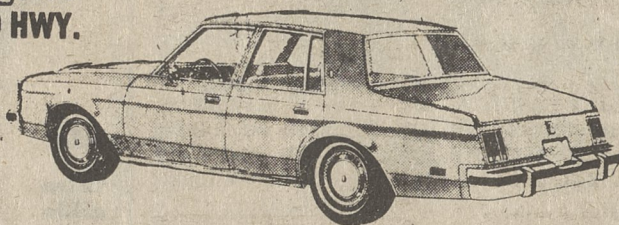
EPA: **19**CITY  
28 HWY.



### 1981 OLDSMOBILE DELTA 88 SDN.

Automatic transmission, power steering, power brakes, 6 cyl., air conditioning, AM/FM stereo, tinted glass, rear defroster, body side moldings, convenience group, wsw radials. Stock # 4472, # 4479, # 4477.

EPA: **21**CITY  
30 HWY.



### 1981 OLDSMOBILE CUTLASS SDN.

Automatic transmission, power steering, power brakes, body side moldings, rear defroster, superstock mag wheels, steel-belted radial whitewalls, AM radio. # 4492

\* PRICE DOES NOT INCLUDE \$75 DEALER PREP, DESTINATION CHARGES, TAX OR TAGS.

*"a place that you can count on"*



## The Ertley Dealerships

401 Market St., Kingston  
 Phone 288-7671

**HOURS:**  
 Mon.-Thurs. 'til 9:00  
 Fri. 'til 6:00  
 Sat. 'til 5:00

**TWO DAY PUBLIC AUCTION**  
 (From 3 Generations) of Valuable Real Estate Household Goods, Antiques including Furniture, Dishes, Hardware, Miscellaneous and Unusual Items of every residence of Mr. and Mrs. Woodrow (BW) Hartzel, (River St.) in the Village of Wapwallopen, Luzerne County, Pa.  
**FRIDAY, MAY 1 SATURDAY, MAY 2**  
**10:00 A.M.**  
**RAIN OR SHINE**  
 AUCTIONEERS ALBERT BROYAN, DENNIS BRIGGS  
 Nesciopeck, Pa. 717-379-3286  
 Clerk Kathy Lee Broyan  
 Owner Mr. & Mrs. (BW) Hartzel Lunch Will Be Available

**IDE'S PAVING COMPANY**  
 675-1218 OR 696-1290

**SPECIALIZING IN**  
 SIDEWALKS, DRIVEWAYS,  
 PARKING AREAS,  
 ROADS & STREETS.  
 CALL FOR FREE ESTIMATES  
 Prov. 13.11

**THE MID-VALLEY DRIVE-IN**  
**RT. 6, EYNON, PA.**

**Every Saturday & Sunday**  
**9:00 a.m. to 4:00 p.m.**  
**Sellers fee \$3.00**  
**Parking .25¢**  
**(717) 876-0360**

**FOR SALE**  
**GENERAL RADIAL TIRES**--Four new. Cost \$170, asking \$140. 675-0112. 12-4-P  
**EPIPHYLLUM**--(Spineless orchid cactus). Huge, gorgeous flowers. Other spiny cactus including some 5' tall. 675-3896. 12-4-P  
**MAYTAG WRINGER WASHER**--Excellent condition. Best washer made. Only \$50. 639-2178. 12-4-P  
**JOINTER-PLANER**--\$125. New condition. Air Compressor with new spray gun, \$125. 675-4926. 12-4-P  
**KELVINATOR DISHWASHER**--Built-in. White. Excellent condition. 675-5381 (8-5, M-F) or 675-4273 (after 5 p.m.) 12-4-P  
**TAPPAN GAS RANGE**--White, Good Condition. \$35. Call 696-2495. 12-4-P  
**WOOD**--Pile of dry wood \$2.00. 287-5153. 15-4-P  
**2 USED TIRES**--Size 650-13, fairly good tread, 2 for \$12. 675-0705. 15-5-P  
**ANTIQUA DOLLS**--Seven dolls all sizes, all over 35 yrs. old, a few in very good cond. Call 287-8779 anytime. 15-4-P  
**BOCK OIL HOT WATER HEATER**--32 gal., six years old. Reasonable offer, after 6 p.m. 696-2782. 15-4-P  
**6 14-IN. WHEELS**--Chrysler tires included. Set of hubcaps for Chrysler 14 in. wheels. 675-5101 after 5 p.m. 15-4-P

**FOR SALE**  
**4 WHITE MAG WHEELS**--with mud and snow tires 11-15 LT. Good cond., \$230.00. Back bench seat from Ramcharger, blue, \$50.00. 333-5909 after 6 p.m. 13-4  
**12 FT. CONVEYOR**--rubber belt, electric, adjustable height, on wheels. \$250 or best offer. 693-2085 13-4  
**300 FT. CHAIN LINK**--9 gauge aluminum, 54 inch height, 1 inch link, \$1.80 ft. 693-2085 13-4  
**14 FT. RACING SAILOR**--fiberglass, curved mast with rebuilt trailer. \$800. 693-2085. 13-4  
**16 CU. FT. UPRIGHT FREEZER**. 675-1448. 14-4-P  
**9'x8' GARAGE DOOR**--\$60; fishing boats \$90 ea.; girls 24" bike \$20; '80 Valvo stereo 8 track radio \$99. 696-1437. 14-4-P  
**SHOP VAC**--encyclopedias, chaise lounge, folding porch chair, S&H stamps, hammock, b-b-q long handled tools, garden tools. 675-5068. 14-4-P  
**FRUITWOOD**--bed, chest of drawers, custom-made window shades, rural mailbox, Irish hand-made blouse and basket. 824-7681. 14-4-P  
**BOSS WOOD BURNER**--never used. Holds 32" logs, \$400 or best offer. 542-7764. 14-4-P  
**BOYS 20" SCHWINN**--1 spd. bicycle \$20, fish tank with wrought iron stand \$15 complete. 696-1345. 14-4-P

**FOR SALE**  
**CONSOLE HUMIDIFIER**--By Presto. Maximum capacity. 3 speeds. \$25. 675-1393. 12-4-P  
**5 STRING BANJO**--With case. Used 3 times. 675-2880. 12-4-P  
**WOMEN'S SHOES**--New red leather women's medium high heels, size 8 1/2 narrow. Will sacrifice for \$10. 675-1393. 12-4-P  
**TILE MIRRORS**--Gold inlaid beveled edges. 35-14" square, four 10" x 13", mounting, hardware, \$85. 675-0112. 12-4-P  
**SPORTS COAT**--size 16 all genuine beaver lining \$50, ladies coat, size 24 1/2, black cashmere, persian collar \$75, trees \$1 each, 1 elm, black walnut, few rose of sharon. 287-5153. 14-4-P  
**79 PONTIAC BONNEVILLE**--16,000 mi., exc. cond., \$5,000. Call 477-5440 or 477-5311. 13-4  
**MINK CAPE**--autumn haze with large double fur shawl collar, full skins, \$700. 654-8770 from 6-8 p.m. 13-4

**MISCELLANEOUS**  
**WILL SWAP**--30 HP Evinrude short shaft motor, also gas tank, holder and 2 sets controls for 185 or larger street or trail bike. 675-1584. 15-4-P  
**WANTED**  
**SOMEONE TO CUT**--Large limbs from black walnut tree and remove them. 287-5153. 15-4-P

**FORSALE**  
**TIMOTHY HAY**--40 acres of standing Timothy Hay, some alfalfa, for sale, or you make on shares. Call Charlie 477-5214. 13-4

**SOFA**--contemporary, black and gold herculon stripes, good cond. \$80. 675-1615. 13-4

**RECORD ALBUMS**--played once - others are sealed. 8 track player am-fm radio, new. 822-7230. 13-4

**FABERWARE**--electric roisserie broiler. Cooks like charcoal, like new bought for \$70 will sell for \$25. 287-4171. 13-4

**POOL**--24 ft. round swimming pool. Needs a liner. Filter in exc. cond. \$250. 696-3254. 13-4

**MAHOGANY DAVENPORT**--and matching pair \$175 complete, oak dresser \$50, electric floor polisher-like new \$50. 675-5614 after 6 p.m. 13-4

**20 GAL. ELECTRIC WATER HEATER**--good cond. \$30, 6 cylinder Pinto engine, good cond., \$50. If interested please call 675-0490 after 4 p.m. 13-4

**5 PC. WALNUT BEDROOM SUITE**--dbl. bed \$400 or best offer. Franklin stove \$150. 477-5371. 13-4

**AM PORTABLE RADIOS**--some with 40 Channel CB Listening. Portable 8 track stereo home unit, new. 822-7230. 13-4

**13'x18' RUG**--stuffed chair, coffee table, cheap. 788-2349. 14-4

**14.8 CU. FT. GE UPRIGHT FREEZER**--like new, \$150; clarinet with case \$100. 298-2049 after 5 p.m. 14-4

**GOLF CLUBS**--complete set woods and irons by McGregor; McGregor golf bag, golf cart, all in good condition, \$125. 639-2121. 14-4

**POLYESTER SUITS**--women's 2 and 3 piece, size 8 & 10, \$3 ea. 696-1442. 14-4

**-78-13 SNOW TIRES**--pair, \$35, used just two weeks. Hurry-they'll go fast. 287-7911 evenings, weekends. 14-4

**MOVING**--furniture, household items, appliances, much more. 696-3940. 14-4

**APPLIANCES**--GE pot scrubber harvest gold dishwasher, portable or built-in like new, \$150; harvest gold electric dryer, like new, \$135; harvest gold GE heavy duty washer, like new, \$165. 735-8177. 15-4-P

**LARGE CERAMIC PLANTER**--pedestal table to match, newly made \$100. 288-4061. 15-5-P

**POST CARDS**--Book of old foreign post cards, \$29. 15-4-P

**DRESS**--All lace dress from late 30's early 40's with diamond-like jewels throughout. Must be seen \$35. 288-4061. 15-4-P

**BEAR GRIZZLY BOW**--Hunting quiver and arrows, like new \$30. 283-0852. 15-4-P

**BIKE**--Men's 26" free spirit bike, single speed, coaster brake, rarely used, \$65. 283-0852. 15-4-P

**MAHOGANY DAVENPORT**--Matching chair, \$175. Oak dresser, \$50. Electric floor polisher, \$50. 675-5614 after 6 p.m. 12-4-P

**TROUSER TROLLEY**--Finished pine, by Yield House, worth \$50, asking \$35. Great gift. 675-1393. 12-4-P

**NEW PROM GOWN**--With matching ruffled shawl, size 13. Green-white print, \$12. 675-1393. 12-4-P

**GOULD HEAVY DUTY BATTERY**--6 volt, \$30. 675-0112. 12-4-P

**MAIDS WANTED**  
 4 Hours Per Day  
 Harveys Lake  
 Top Pay, Hours Flexible  
 639-1808

**AUTO**  
 1969 FORD GALAXIE CONVERTIBLE--Good condition. Some rust. \$600. 826-1810 or 675-3750 after 5 p.m. 12-4-P

1976 MG MIDGET CONVERTIBLE--4 speed. Good condition. 20,000 miles. 655-1895. 12-4-P

1976 PACER--6 cylinder. Standard shift. Good running condition. New radial tires. \$1295. 693-3271. 12-4-P

1980 AMC CONCORD DELUXE--a.c., AM radio, completely undercoated, 4700 miles, \$5995. 287-7058. 13-4

1971 LTD FORD--P.S., P.B., A.C., body and rubber good, \$575 after 5 p.m. 675-1278. 14-4-P

1966 DODGE DART--72 slant engine, asking \$200. 696-3940. 14-4-P

1979 PLYMOUTH HORIZON--4 spd, front wheel drive, A.C., new all season radial tires, 30 mpg. Best offer over \$3800. 696-3089. 14-4-P

1979 CHEVROLET CAPRICE LANDAU COUPE--A.C., cruise control, electric windows, power door locks, AM-FM stereo, \$6200. 696-3331. 14-4-P

78 CHEVROLET--12' high cube van, V-8, auto., P.S., P.B., radio, 11,000 lb. GVWR, 39,000 mi. (717) 455-7701. 15-4-P

78 CHEVROLET STEP VAN--12' body, V-8, auto., P.S., P.B., dual rear wheels, 11,000 lb. rear axle, 12,000 lb. GVWR, 30,000 mi. (717) 455-7701. 15-4-P

1975 DODGE COLT--\$1800. 675-0247 after 4 p.m. 15-4-P

1972 BUICK SKYLARK--Brown, V8, new front tires and battery. Moving, must sell, \$650. 675-0560. 15-4-P

1977 TOYOTA COROLLA DELUXE--4 spd., very good cond. \$3100, call after 5 p.m. 256-3949. 15-4-P

**MOTORCYCLES**  
**HARLEY-DAVIDSON**--annual spring discount--over 1/2 million dollars in motorcycles and accessories--some of our customers travel over 200 miles to buy from us--we trade in anything--7 mechanics to serve you better.  
**SUPER SPECIAL**--till April 30th--Harley-Davidson Wide Glide--normal price \$6739--super special sale price \$5995. 14-2-P

**ANIMALS**  
**AKC MALTESE PUPPIES**--Adorable pure white, perfect for Easter. Excellent with children. 675-5987. 12-4-P  
**CHESTNUT MARE**--8 years old. Excellent manners. \$550. 287-6480 or 288-0481. 12-4-P  
**BAY GELDING**--10 years old riding horse. Sound and good conformation. \$700. 696-1958. 12-4-P  
**BUNNY BONANZA**--Bodle road, Carverton, Dwarfs, giants, New Zealand whites and reds, Dutch. Also supplies and cages made to order. Browsers welcome. 333-4178. 13-4  
**PART PERSIAN**--long hair kittens--tri colored, pomeranian dog for stud or sale. 675-3057. 15-4-P  
**PUPPIES FOR SALE**--Call 675-1921 after 4 p.m. 15-4-P  
**2 PARAKEETS**--With 2 cages and toys \$25. Moving must sell. 675-0560. 15-4-P

**SPORT CENTER**  
 (717) 253-2889  
 HONESDALE, PA.

**MOPED COLUMBIA**--Yellow, under 500 mi., \$450 including helmet and 5 gal. gas can. Bought new in June, 1980. 675-1626. 15-4-P

**HONDA 70**--Street bike, 1770 miles, exc. cond. after 5 p.m. 696-1748. 15-4-P

**HONDA TRAIL 90**--Exc. cond. after 5 p.m. 696-1748. 15-4-P

**HELP WANTED**  
**BE A WINNER! BEAT INFLATION!**--Work your own hours demonstrating MERRI-MAC toys, gifts, and home decor items. We need party plan demonstrators in this area. High commission. No investment, no delivering, no collecting. Call toll free now! 1-800-553-9077, or write: MERRI-MAC 801 Jackson St., Dubuque, Iowa 52001. 13-4

**TELEPHONE SUBSCRIPTION SALES**

If you're self-motivated and enjoy talking with people, call Rick Shannon at 675-5211 for full details.

**HELP WANTED**

**RELIABLE WOMAN**--To do housework three days a week in Dallas. Send replies to Dallas Post, P.O. Box 366R, Dallas, Pa. 18612. 12-4

**GARDNER-HANDY-MAN**--To do outdoor maintenance work one or two days per week. Back Mountain area. 696-2434. 12-4

**PART-TIME WORK**--Dallas High School Junior Girl interested in part time work. Inquire immediately. Call Mowry Custom Photographic at 717-836-3990. 12-2-P

**EARN \$4.87 HR.**--We need assistance in evaluating and responding to daily work reports submitted by our field agents throughout the state. No experience necessary; Paid training program; Work full or part-time at home. For information send self-addressed, stamped envelope 9 1/2 inches long to AWG, P.O. Box 49204, Atlanta, GA 30359.

**MOBILE HOMES**

1973 SKYLINE HOMETTE--12'x70', three BR. available 6-1-81, appointment only, after 5 p.m. 696-3572. 15-4-P

1980 VISTA ENERGY SAVER--Heavy duty skirting. Peaked roof. 2 BR. Spanish interior. Large LR. Raised kitchen and DR. Den with bar and Shaker roof. Fully carpeted. Hide-a-way laundry area. Large bath. Mostly furnished. 1 1/2 years insurance paid up. \$4000 firm, assume mortgage of \$180 month at 12 1/2 percent interest. Owner will finance remaining balance of \$14,300. Set up in park, can be moved. Exc. cond. 693-2088. Serious inquiries only. 15-4-P

**PERSONAL**

**SINGLES DATING SERVICE**--18-80. Professional. Confidential. Inexpensive. Write P.O.B. 158, West Pittston, Pa. 18643. 6-24-P