

Autumn extravaganza

Pennsylvania's flaming foliage rivals that of any other state or region of the world. Of all species of trees native to the United States, 127 are found in the Commonwealth. The state is the meeting ground of many northern and southern species. Some of the northern varieties such as cherry, native birch and northern red oak have their southern limits here, while some southern species such as Virginia pine, sweet gum and sassafras are not found north of the Great Valley section in which Harrisburg lies.

In the western part of the state, there are species common to the Mississippi Valley while in the southeast some varieties of the Atlantic coastal region are found. From east to west, the northern zone consists of part of Wayne county and all of Susquehanna, Bradford, Tioga, Potter and McKean counties. The height of the fall color occurs between Oct. 1 and 14. One of the finest stands of hardwood in the Commonwealth grows in a tear-shaped area from Galeton to Lock Haven. Pennsylvania's flaming foliage season begins here with the sugar maple, beech, birch and ash. This vanguard is followed by the white, red, scarlet, chestnut, pin and black oaks, then the tulip tree and scatterings of sassafras, aspen and gray birch.

In this Appalachian Mountain Plateau region are mirror lakes, swift streams and mountain wilderness dotted with small cities and towns. There are 18 state parks, the northern end of the 471,000-acre Allegheny National Forest, the Pennsylvania Grand Canyon near Wellsboro and, in the eastern section, the rolling hillsides

of the Endless Mountains. The central and southern zones are roughly divided by a line curving from northeast to southwest that follows the Allegheny range of the Appalachian Mountains. The division begins in the southern part of Monroe county, then crosses Carbon, Schuylkill, Northumberland, Juniata, Mifflin, Huntingdon and Bedford counties, ending in the southwestern corner of Somerset county at the Mason-Dixon Line.

Fall color is most brilliant in the central zone between approximately Oct. 12 and 26, while the triangular southern zone reaches its peak between Oct. 19 and 31.

The central zone has a varied terrain, ranging from near sea level to the 2500-foot plus Appalachian Mountain Plateau and the Appalachian Mountain section. This large zone is threaded by fertile valleys and pierced by the two branches of the Susquehanna River, by the Juniata River and by the winding Allegheny River. The glacier-torn Delaware Water Gap is in the eastern end of the zone. In the north-central section is the rugged 23,013-acre Bucktail State Park with its 7-mile-long

Bucktail Trail Canyon. Farther west is the Allegheny National Forest including the Tonesta National Area with its centuries-old trees and its wilderness beauty. To the south is the Cook Forest State Park with walking trails through some of the finest virgin timber in the east. State parks are numerous.

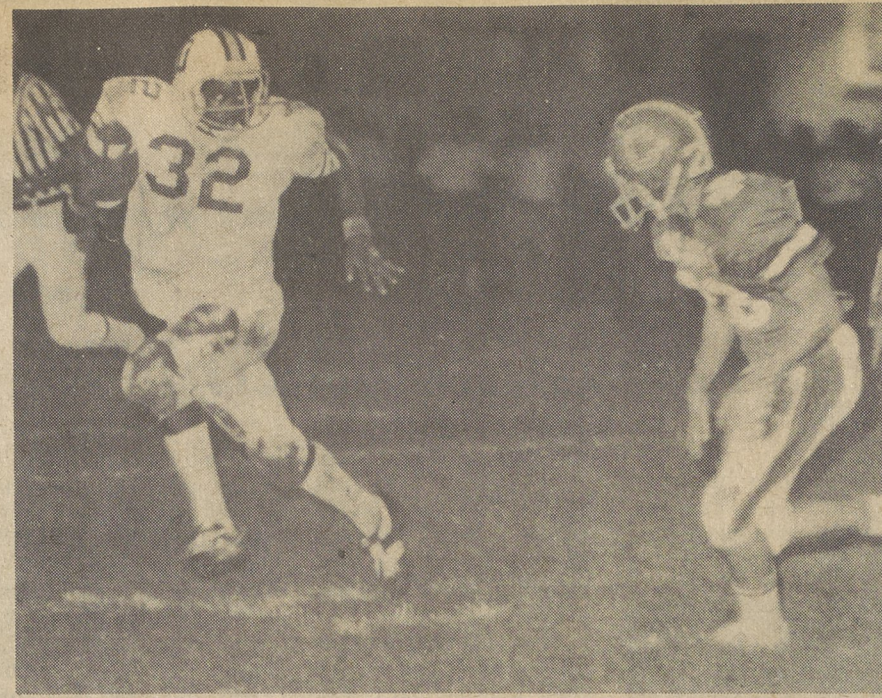
The southern zone begins in the vicinity of Stroudsburg on the Delaware River and terminates on the eastern slope of Laurel Hill Mountain, west of Somerset. There are great contrasts: forests, farmlands and rugged mountains covered with dense forests. The Commonwealth's greatest diversity of trees exists in this zone where warm air and rain move up the Great Valley to merge the north and south in climate.

In the southeastern end of the southern zone is Philadelphia, where more than 100 varieties of trees in 7,000-acre Fairmount Park offer proof that leaf peeping can be done in the city as well as the country. Surrounding Philadelphia are the wooded hills of Bucks, Chester, Delaware and Montgomery (Valley Forge) counties.

Calendar of Events

DALLAS SENIOR HIGH SCHOOL CALENDAR OF EVENTS SEPTEMBER

- September
 11-Golf-West Side Tech-Hopme-Irem Temple C.C.-4 p.m.
 11-Cross Country-Boys-Lake Lehman, W.V.W.-Away-W.V.W.-4 p.m.
 11-Cross Country-Girls-W.V.W.-Away-W.V.W. 4 p.m.
 13-Football-Hanover-Away-2 p.m.
 15-J.V. Football-Hanover-Home-4 p.m.
 15-Golf-G.A.R.-Away-Hollenback-4 p.m.
 17-Cross Country-Boys-Pittston, Coughlin-Away-Coughlin-4 p.m.



FIRST DOWN--Dallas Halfback Norm Bordley [32] carries the ball on an end sweep to pick up first down yardage for the Mounts in the Coughlin game Friday night. [Photo by Mark Moran]

Mothers club will hold Sports Night

The Dallas Mothers Club will hold an All-Sports Night on Monday, Sept. 15 at 8 p.m. in the Dallas Sr. High cafeteria. There will be refreshments and entertainment.

The coaches of sports in the school district will be present and will answer any questions of the parents.

The officers of the club will be introduced by Eula Lewis, president, and Kate Dickson will begin her duties as the club's new secretary replacing Ellen Lehon.

The tea is open to all parents and friends of students involved in sports and cheerleading in the Dallas School District.

L-N PTA

to meet Sept. 16

Lake Noxen PTA will hold its first meeting on Tuesday, Sept. 16, at 7:30 p.m. in the multi-purpose room at Lehman-Jackson Elementary School.

Guest speaker for the evening will be Robert Musser from Family Service speaking on communication with our children.

Miss Linda Adams will have a gym exhibition with students participating.

Babysitting will be available. Everyone is welcome.

Football Schedule

Suburban Junior Football Conference 1980 Schedule

- Aug. 31
 Nanticoke at Northwest
 Sept. 7
 Newport at Nanticoke
 Kingston at Dallas
 Northwest at Northeast
 Sept. 14
 Dallas at Nanticoke
 Northwest at Kingston Twp.
 Northeast at Newport
 Sept. 21
 Nanticoke at Kingston Twp.
 Dallas at Newport
 Northeast at Northwest
 Sept. 28
 Kingston Twp. at Newport
 Northwest at Dallas
 Nanticoke at Northeast
 Oct. 5
 Northwest at Nanticoke
 Newport at Dallas
 Kingston Twp. at Northeast
 Oct. 12
 Nanticoke at Newport
 Kingston Twp. at Northwest
 Northeast at Dallas
 Oct. 19
 Newport at Northwest
 Dallas at Kingston Twp.
 Northeast at Nanticoke
 Oct. 26
 Newport at Kingston Twp.
 Dallas at Northeast

Back Mountain Soccer scores

- 9-10 year olds
 Stompers-3; Sockers-1
 Tornados-13; White Caps-0
 Sky Hawks-5; Rogues-0
 Cosmos-4; Stoners-0
 Rogues-4; Stoners-2
 Sky Hawks-3; Cosmos-1
 Stompers-7; White Caps-0
 Sockers-0; Tornados-6

- 11-14 year olds
 Strikers-5; Metros-2
 Roughnecks-7; Fury-2
 Hurricane-4; Aztecs-2
 Chiefs-4; Sting-1
 Metros-2; Roughnecks-1
 Strikers-2; Fury-2
 Chiefs-3; Aztecs-0
 Hurricane-3; Sting-0

- 7-8 year olds
 Timbers-6; Earthquakes-0
 Sounders-2; Spurs-0
 Kicks-2; Express-2

WILKES-BARRE FATS

Knights win 2

by Lee L. Richards

It was an exciting week in the Back Mountain. Lake-Lehman and Dallas both won its openers and Knights fans were wondering if their team could topple the Valley West Spartans two years in-a-row. The Mountaineer faithful believed they had a chance to whip Coughlin, too.

Coach Ron Rybak's charges gave a valiant effort against the defending WVC champs, but bowed in the second half. That was Friday night.

Saturday was a different story. Coach Tom Hisiro seemed confident when we chatted Friday night at the Meyers-Hoban game. Hisiro said, "We feel if we sustain a couple of drives and play solid on defense we gotta chance to win."

Led by the aggressive and punishing tackles of Mike Leskowsky the Knights came out on top by a TD. After a scoreless first-half, they made the necessary adjustments and throttled the Spartans to a mere 26 yards rushing and took charge on the offense.

"Needless to say it was a great win for our program. Our special teams played an important role again," said Coach Hisiro. "Last year it was our kicking game which prevailed. This time our special teams made some key plays. I'd have to say we got a heckuva effort from every player. They sort of gained some confidence during the early part of the game."

Valley West put on a sustained march early but couldn't cash it in. The Knights pulled a reverse with a pass off which appeared to be a sure six, but the receiver couldn't handle the football. That loosened up the Spartans.

QB Tom Hillman kept them honest with short passes and Rocky Bonomo pumped for some tough yards behind the bullish blocking of Leskowsky.

Credit Tracey Slocum with some fine punts which helped on each exchange.

Defensively, Bonomo and Chip Austin covered a lot of ground and seemed to always be around the ball. Spartans geared their offense to running left which is an old Fennell philosophy. Todd McCarroll got in his share of licks as did Tony Langston, but Leskowsky really hammered some people despite the attempt of being double-teamed.

Hisiro says, "I like the attitude of this team. They've worked extremely hard. I guess we know each other a little better. They are a tough bunch. We're more precise in running our offense. We've only been flagged seven times in two games which shows we're thinking."

This week it will be Wyoming Area. The Warriors possess some hitters and a ground-oriented offense. If the Knights can disrupt their ground game, force them to go to the air, they've got a chance, but they can't afford to allow them long, time-consuming drives or it's trouble.

Dallas must feel a little more confident about its ability to hang in there with teams that routed them last year. They visit the unbeaten Hanover Hawkeys Saturday and I wouldn't be surprised if the locals picked up win No. 2. One thing is certain the Mounts aren't gun-shy!

CLIPBOARD NOTES: Can't believe there's only one team in the loop with a good passing attack and that's Meyers behind QB Barry Wasilewski. He's got some nifty receivers. When he learns to look off primary target and dump the ball to his backs look out...John McEnroe is the U.S. Open champ again and played mighty impressive against the King, Bjorn Borg. They're both champs and amazing under the gun. Don't tell anyone but I flipped off the Eagles romp to watch tennis? ...

-How's this little tid-bit: "Why spend \$55,000 to go to Missouri and come back with \$85,000 or \$90,000?" says Penn State's Joe Paterno. "Why not play a Rutgers or a Temple at our place, fill the stadium and give another eastern team a nice guarantee? From a financial standpoint, our agreement with Missouri is not a good agreement." The Lions obviously stand a good chance of getting whipped, too. Rutgers and Temple would be just an easy win. Now that State plays a schedule worth getting excited about they're already looking for an out.

Based on what I've see around the local scholastic loop, most of the teams have little diversification in their offenses and are very limited in how they can move the football. There isn't a real dominating team in the conference...Our Top five are: 1-Wyoming Area, 2-GAR, 3-Meyers, 4-Lake-Lehman, 5-Coughlin. Warriors have a good defense. Grenadiers play tough. Mohawks lack running attack. Knights are spunky lot and will hit you. Crusaders still riding on last year's success.

I get a kick out of the weekly selections by the computers and how many times the big machine comes out a loser. Example: in the NFL opener the machine in the N.Y. Post clicked off five right and eight wrong. That's sorry!

Watching the Lake-Lehman-Valley West game I got the feeling Coach Tom Hisiro is a very heady "game" coach by the way he handled his team and his play selections. Some guys are good practice coaches, while some are better at preparation for a game, but being able to spot a weakness and make the right adjustments is the sign of a very capable football coach. Knights are somewhat limited to what they can do and it appeared they played to their strong suits. Coach Jim Fennell's offense was predominantly left handed and it took the Knights a little while to make the proper adjustments.

Tom Hesser Chevrolet BMW

'80 CHEVY MALIBU 4-Dr., V-6 Auto., P. Steering, Full Wheel Covers, Steel Radials, White Walls, Radio, Cloth Seat. Stock #4874. List Price \$6930.57. SALE \$6014	'80 MALIBU CLASSIC Station Wagon, Rear Defroster, V-6 Auto., P. Steering, AM-FM Radio, Custom Paint, Steel Radials, Cloth Interior, Rust Proofed. Stock #4857. List Price \$7832.57. SALE \$6738	'80 MONTE CARLO Landau, Turbocharged, Auto., Air Cond., V-6, Tilt Wheel, Custom Interior, Rear Defroster, Steel Radials, White Walls, Much More. Stock #4630. List Price \$9259.66. SALE \$7868
'80 MONTE CARLO Landau, V-6, Turbocharged, Auto., P. Steering, Tilt Wheel, Air Cond., Rear Defroster, Radio, Much More. Stock #4620. List Price \$8893.69. SALE \$7583	'80 IMPALA 2-Dr. Sport Coupe, Air Cond., V-6, Auto., P. Steering, Rear Defroster, Mats, Radio, Steel Radials, White Walls, Bumper Strips, and More. Stock #4567. List Price \$8091.34. SALE \$6743	'80 IMPALA 4-Dr., Air Cond., V-6 Auto., P. Steering, Custom Paint, Grey and Silver, Steel Radials, White Walls, Value Appearance Group. Stock #4811. List Price \$8336.84. SALE \$6944

USED CARS

(3) '80 CITATIONS To Choose From, 4-Cyls and V-6., Auto., 4-Speeds, Next To New. Your Choice. \$5595
'79 CHEVETTE Hatchback, Coupe, Blue, 4-Cyl., Auto., Sport Stripes, Gas Miser! \$3995
'79 IMPALA 4-Dr. Sedan, Silver with Red Top and Interior, 305 V-8, Auto., P.S., Air Cond., Sharp Family Car! \$4895
'78 MAZDA GLC Hatchback, Gold, 4-Cyl., 4-Speed, 30,000 Miles, Great Little Car! \$3995
'78 MAZDA SPYDER 2+2, Hatchback, Blue, V-8, 4-Speed, P.S., P.B., Mags, Sunroof, Performance Plus! \$3795
'78 MALIBU CLASSIC Compact Family Station Wagon, Light Bronze, 305 V-8, Auto., P.S., P.B., Air Cond., Luggage Rack! \$4695
'78 NOVA Coupe, Royal Blue, 6-Cyl., Auto., P.S., P.B., AM Radio, Economy Plus! \$3795
'77 MONTE CARLO Coupe, 2-Tone Blue, 305 V-8, Auto., P.S., P.B., AM-FM, Air Cond., Last of the Classic Body Style! \$4195

Tom Hesser Chevrolet BMW

101 N. Wash. Ave. 343-1221
 Scranton, Pa.
 Sales Hours Mon. thru Thurs. 9 a.m. to 9 p.m.
 Fri. 9 to 5:30 p.m. - Sat. 9 to 5 p.m.

RUSTY JONES
 SHINE ON EXTERIOR TREATMENT

KEEP THAT GREAT GM FEELING WITH GENUINE GM PARTS

GM QUALITY SERVICE PARTS

MEMBER LACKAWANNA Co. automobile dealers association

R&R CONSTRUCTION
 Interior and Exterior Remodeling
 • Carpentry • Additions
 • Roofing • Masonry
 • Bathrooms • Insulated
 • Kitchens • Chimneys
 • Concrete Work
287-3325

SKIERS.

The Big Two pack more value into their season lift ticket than ever before!

ACT BEFORE OCT. 5 AND SAVE

jack frost mountain
 White Haven, Pa. 18661
 Tel. 717 / 443-8425

BIG BOULDER
 Lake Harmony, Pa. 18624
 Tel. 717 / 722-0101

ENJOY THESE ALL NEW FEATURES:

- NIGHT SKIING (Tues. thru Sat.) at Big Boulder
- A brand new intermediate slope at Jack Frost Mt.
- Midweek and Night Season Lift Tickets and Family Plans now available

Full service facilities with 22 slopes and trails, 13 lifts, snowmaking on all slopes and Preferred Parking for Season Lift Ticket holders delight every skier from novice to expert.

Both Ski Areas **WE'RE CLOSE TO YOU.**
 Open 7 Days a Week.
 Just minutes off Pocono Exit 35 of the Northeast PA Turnpike Exits 42 & 43 off I-80.

SKI the BIG TWO Box 37-A-1 White Haven, PA 18661
 Please send color brochure, application and rates for season tickets to:

NAME _____
 ADDRESS _____
 CITY _____ STATE _____ ZIP _____ PP

Pre-Season Special

100% Dacron Hollofil II

INSULATED VESTS
 Reg. \$27.50
\$16
 BOYS SIZES
\$15

WOOLRICH VESTS
20 to 50% OFF

ADAM'S CLOTHES
 Back Mountain Shopping Center
 Shavertown
 Daily 'til 5 675-1130 Thurs. & Fri. 'til 8