



FROM THE MOUNTAIN--Kathleen Hislop and Al Lipko display items sent to Ms. Hislop by her mother, Mrs. Clarence Hewitson, Kent, Washington. The poster displays a photo of the eruption and the ashes held by Lipko are some which settled over Kent following the second eruption of Mt. St. Helen. Both are on display at Lipko's Store. (Photo by Mark Moran)

Kiwanis Strawberry Festival

Back Mountain Kiwanis will sponsor a strawberry festival on Friday, June 27 from 5-9 p.m. at Gate of Heaven School Auditorium. Donation is \$1.50 for adults and \$1 for children under 12.

Advance sale of seating tickets is now available from any Back Mountain Kiwanian or at the door on the night of the festival.

Chicken dinner at Nesbitt

In conjunction with the Nesbitt Memorial Hospital Auxiliary's June Festival scheduled on Wednesday, June 18 from 11 a.m. to 8 p.m. at Nesbitt Memorial Hospital, 562 Wyoming Ave., Kingston, the Dorranceton Branch has scheduled a chicken dinner from 3:45 p.m. to 7 p.m. Tickets for the chicken dinner \$4.

The dinner will be held in the hospital cafeteria, and takeouts are available. Tickets may be purchased at the door or from a Dorranceton Branch member.

Diocese topic is divorce

"Mind, Body, Spirit" will be the topic for the June 12 meeting for the Separated and Divorced Support Group to be held in St. Cecilia's Parish Hall, Wyoming Avenue, Exeter, at 8 p.m. Patrick Cioni, MS, will speak on the physical-psychological-spiritual being.

SUMMER SALE

NOW IN PROGRESS

MON. THRU SAT. 9:30-6
TUES. AND FRI. 9:30-9

20% to 50% OFF

DOCTORS' PRESCRIPTION SPECIALISTS

GINO'S

Your Family Shoe Store
DALLAS SHOPPING CENTER
675-2029

The Dallas Post provides more

- Generous Free Want Ad Policy
- Periodic Factory-Outlet Guides
- Objective Coverage of Local Govt.
- Local Sports Coverage
- Award-Winning Features
- Savings to Readers

See Special Offer on P. 11

Matz's
Mon., Tues., Wed. 12-5:30
Thurs. 10-8, Fri. & Sat. 10-5:30
Carverton & Dug Roads
Trucksville
(Across from the Checkerboard)

New Shipment of
WHITE BLAZERS \$19⁹⁵

Nationally Advertised \$39.95 and up
DRESSES \$24⁹⁵

Now
To Size 44
TERRY TOPS \$7⁹⁸

BATHING SUITS \$13⁹⁵ up
One & Two Piece

MasterCard
VISA

The most spectacular event in U.S. history...

Yes, Mt. St. Helen's eruption was spectacular and samples of the actual volcanic ash plus Mt. St. Helen's area photos are now on display at Ye Olde Clock & Gift Shoppe, Dallas Shopping Centerto call attention to our usual

SPECTACULAR VALUES

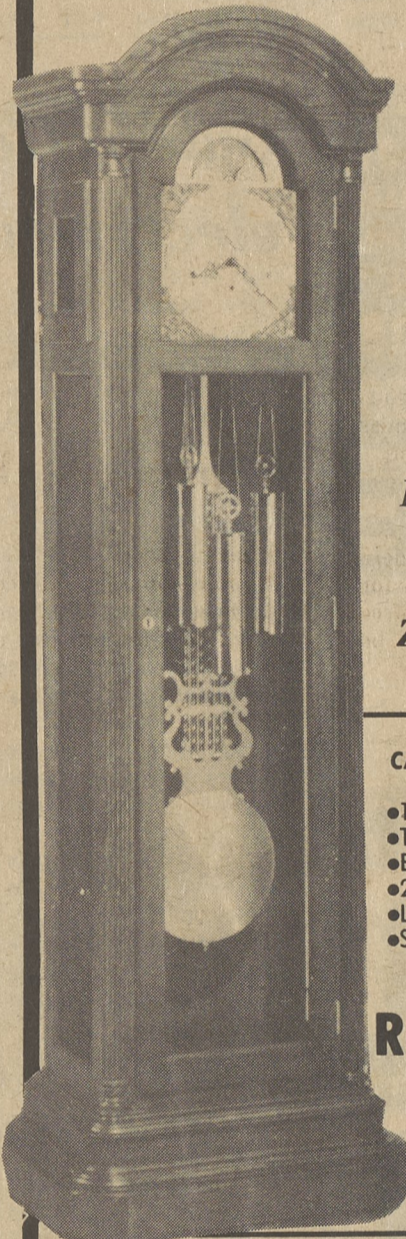
15th Annual

Sale

The 5th Largest Clock Shop in the U.S.A.
(OVER 200 GRANDFATHER CLOCKS)
(300 WALL & MANTLE CLOCKS)

10 to 40% OFF

CLOCKS



Exclusive dealer of the Zachariah Maples

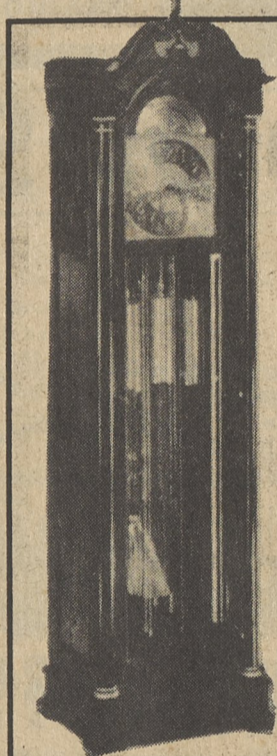
- CARDINAL RICHELIEU FLOOR CLOCK**
- 14 day cable drive
 - Triple chime
 - Bevelled glass door
 - 20 karat gold face
 - Large lyre pendulum
 - Solid oak
 - 82" x 26" x 15"

Reg. \$2695
\$1995

Please come & visit our Gift Dept.

10% Off ALL GIFTS

- Crystal from Poland
- Delftware from Holland
- Brass & Pewter Candle Holders
- Royal Dux
- Alabaster Figurines from Italy
- Copper & Brass Items
- Tiffany Shades
- Gold IMARI Ginger & Temple Jars
- All types of Collectable Plates
- Music Boxes by Thorens of Switzerland



5 Tubular Westminster Chime Lyre Pendulum
Reg. \$2542
\$1995

30 DAY KEY-WIND WALL CLOCKS

Reg. \$99⁹⁵ **\$80**

30 DAY KEY-WIND STEEPLE CLOCKS

Reg. \$99⁹⁵ **\$80**

Collector's MUSIC BOXES

Largest selection in the eastern U.S.



\$12²⁵ to \$1400

4 Season ROCKWELL PLATES

Reg. \$135
\$115

1979 PLATES
Reg. \$80
\$125



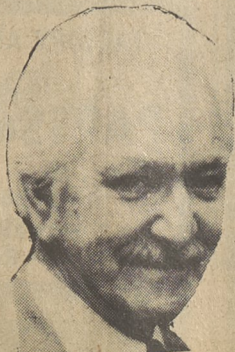
717-675-2777 24 HRS. A DAY

Ye Olde Clock & Gift Shoppe

PERSONAL SERVICE
FREE SETUP
MASTER CHARGE

DALLAS SHOPPING CENTER, DALLAS, PA.
RT. 309 GOING NORTH
OPEN DAILY 9 TO 9 - SUNDAY 1 TO 6
BANKAMERICARD
LAY-A-WAY

FREE NAMEPLATE
FREE DELIVERY



Al Lipko, Mgr.