

Save water, energy and dollars with modern faucets and showerheads

Faucets and showerheads should be an integral part of your bathroom decorating plan.

They not only add beauty and convenience to the bath, but can also save significant amounts of water, energy—and money—if you select a faucet with built-in

water-saving flow control.

Reducing water and energy use in the bathroom is easy, says Kohler Co., a leading manufacturer of water-conserving plumbing products.

Water-saving showerheads, for example, can reduce water

flow from 6 or 8 gallons per minute to 3 GPM while still

providing drenching, thoroughly satisfying showers. Approximately 60 percent of the savings will be hot water.

Water-conserving faucets limit flow to a rate that is ample

without being wasteful. And water-saving toilets flush with significantly less water than conventional toilets.

These three products alone could save an average family of four as much as 36,500 gallons of water a year, plus many dollars in energy savings.

You don't have to sacrifice elegant faucet styling to gain the advantages of water savings, Kohler Co. notes.

There are faucets with antique styling to bring a touch of nostalgia to your decorating scheme. Modernistic faucets with avant garde elegance.

Faucets with gemstone onyx handles or exotic wooden handles. Single control faucets with "washerless" cartridges for dependable service. And many more.

They offer water-saving flow control at no additional charge, and cost no more to install than conventional faucets.

Add decorative zest to rooms How often should you mow grass?

Area rugs are big news decoratively. People are realizing that a beautiful rug does not replace their cherished wall-to-wall carpet—but is an addition to a room, often giving the extra touch of zest in color, pattern or texture that can turn a bland room into an exciting one.

There are two points to bear in mind when buying an area rug. The first is the stunning ability of a well-placed area rug to create the feeling of a room within a room.

This is particularly true when it is used in an open space plan where living room, hall and dining area flow into one another without intervening walls.

Then, an area rug will create an "island" that, when furnished with comfortable seating and a good lamp, makes a pleas-

ant yet unconfined space for someone to sit, read, relax, do telephoning, listen to music or watch television.

In a fairly large multipurpose room, an area rug can mark off the dining space or a corner with a game table, giving visual distinction at the same time.

And its traditional use, in entrance hall or passage, sets the mood for the whole house—lively or tranquil as the owners wish.

The second point to remember is that an area rug is like a fashion accessory and should be used in the same way.

Many area rugs are sufficiently distinguished to warrant being hung on a wall, like a tapestry. A rug, such as Bigelow's "Trees," with its exciting mixture of colors and pat-

terns, could very well grace a wall, much like a valuable painting.

And in our mobile society in which, statisticians say, 18 to 20 percent of Americans change their place of residence every year, an area rug can be the most valuable of household possessions, decoratively as well as intrinsically, because of its flexibility in use.

• Q: What tools are needed to install lay-in panels (suspended ceiling)?

• A: The job can be done using these common household tools: chalk line, measuring rule, hammer and nails, metal snips, pliers, two-foot or four-foot carpenter's level, string and utility knife.

How often you mow your lawn will vary with its rate of growth. A well-fertilized Bermuda grass may need mowing every two or three days in mid-summer.

Cool season grasses become dormant during summer heat, and mowing may be necessary only once every two or three weeks.

According to Ortho's new book, "All About Lawns," the best rule of thumb is this: Mow when the grass is one-fourth to one-third taller than its customary mowing height.

In other words, if your lawn's mowing height is 2 inches, mow it when it's about 3 inches high, removing one-third of the height of the grass blade. A good book on lawns, such as Ortho's, will give you the correct mowing

heights for different types of grasses.

If you let your grass grow too high before you cut, you risk damaging your lawn. For example, if you cut away more than half the blade when you mow, you expose stems that have been shaded and are not adapted to strong sunlight.

Mowing when the grass is too high results in deterioration of green leaf tissue at lower levels. Perhaps most important, roots are severely shocked by a heavy mowing and may need several weeks to recover.

In effect, infrequent mowing

and removal of too much grass at one time, will eventually produce a lawn with a thin, spotty or burned out appearance.

Research has shown a direct relationship between height of cut and the depth of roots. Roots of grass properly mowed at the correct height will grow deeper. Deep roots are an advantage and make lawn care much easier.

Mowing at the right height is an important part of good lawn maintenance, and a well-maintained lawn resists invasions of weeds, insects and disease. It also has a lush and healthy look.

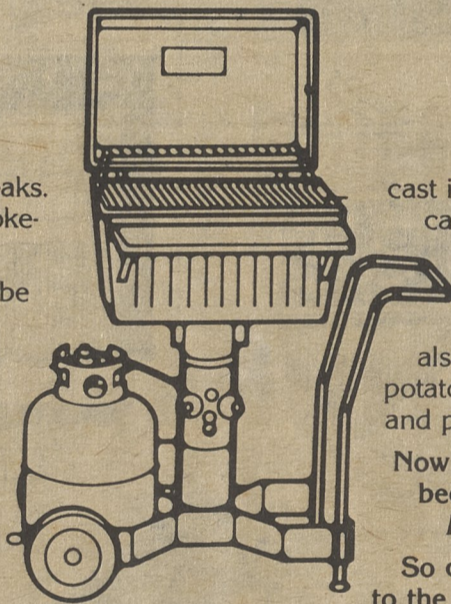
AGWAY PETROLEUM BRINGS BACK THE GREAT BARBECUE

Taste the good life. Sizzling steaks. Broil-roasted chicken. The smoke-filled flavor of barbecue.

That great charcoal flavor can be yours tonight with a quality Broilmaster Grill from Agway Petroleum.

This 460 Sq. in. Broilmaster LP grill has everything you need to cook five steaks to perfection. Rugged. Corrosion-resistant. With no-fuss, no-mess permanent Lava Rock coals.

And you'll be cooking with the most uniform heat available from any gas grill, because of Broilmaster's exclusive patented



cast iron "bow-tie" burner which carries a three-year warranty against defects in workmanship and materials.

The Broilmaster G-4TX-PL also includes a heat indicator, potato rack, front redwood shelf, and porcelainized cooking grids.

Now during Agway's Great Barbecue celebration you'll get a FREE tank of LP Gas, too.

So come on. Treat your family to the best taste around. On the best name in LP Gas Grills—Broilmaster. See them today at Agway Petroleum. Where great quality and values begin.

QUALITY
for \$289.95
MODEL NO. G-4TX-PL

The best in LP Gas Grills

Cook six steaks or more!
Broilmaster G-3TX-PL
526 Sq. in. cookspace
3 cooking positions
Free tank of LP Gas
Only \$329.95

Cook four steaks or more!
Broilmaster G-1000SC-PL
376 Sq. in. cookspace
Free tank of LP Gas
Only \$219.95

Cook three steaks or more!
Broilmaster SG-PL
315 Sq. in. cookspace
Single burner
Free tank of LP gas
Only \$139.95



AGWAY PETROLEUM

We do more than bring down the cost of winter



Box 53, Avoca, Pa. 18641

Phone: 829-4466
346-3453
654-2798

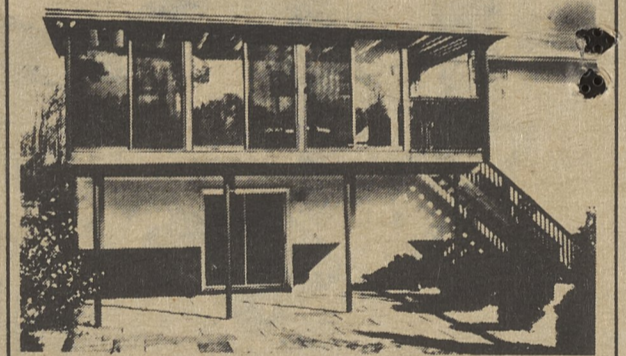


POLISH DOLLS, T-SHIRTS, RECORDS, GIFTS, BOOKS, JEWELRY, BUMPER STICKERS, ETC.

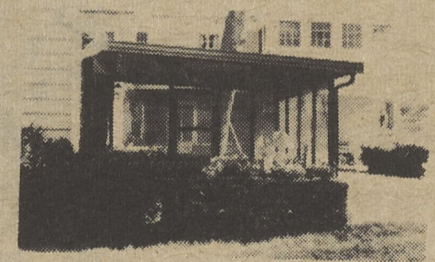
POLISH HERITAGE GIFT SHOP

17 THIRD AVE., KINGSTON, PA. 18704
Call or Stop In for FREE Catalog - 288-8333

COMFORTABLE OUTDOOR LIVING WITH A RUDEBON PATIO



IDEAL FOR DINING, FAMILY GATHERINGS, ENTERTAINING OR JUST PLAIN RELAXING



CUSTOMED DESIGNED TO BLEND WITH YOUR HOME
VISIT OUR SHOWROOM —
FULL SIZE DISPLAYS
265 CHARLES
LUZERNE, PA.

HOURS:
MON.-FRI. 9-5:30 P.M. FREE ESTIMATES
WED. TILL 9 P.M. 288-7447