

## Hughes elected president of principal's group

Edgar W. Hughes, principal of Dallas Senior High School, recently assumed the duty as president of the Luzerne County Principals' Association for the 1979-80 year.

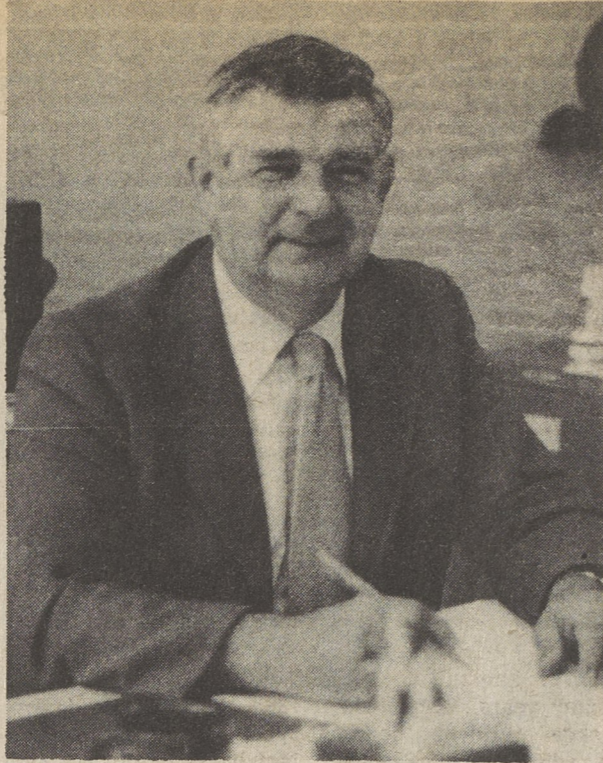
Hughes, a resident of the Back Mountain, served as vice-president during 1978-79. He presides over a membership of 55 secondary and elementary middle management personnel.

He said his organizational goals include the following: an increase in membership;

workshops to include topics on middle management, negotiations, declining school enrollment, professional staff evaluation procedures.

A series of workshops have been planned throughout the year, the next being on Oct. 23.

Other officers include vice-president, Paul Labeda, principal of Coughlin High School and secretary-treasurer, Clem Maslow, retired assistant principal of Wyoming Valley West School District.



Edgar Hughes

## Counselor assignments set at Dallas Senior High School

Dallas Senior High School will be involved for the 1979-80 school term with full implementation of its revised Guidance program. Under the new system, each counselor will begin with a tenth grade group and follow that class through their complete high school experience.

By moving with the class, the counselors have a much better opportunity to really know the students and thus be more effective. Counselors will be more able to keep close check on student needs and concerns. It is felt parents would be less confused as to whom to consult with and will have

greater opportunity to know the counselor and thus establish better rapport.

Dallas counselors will utilize a team approach. The present Vega program for sophomores is aimed at developing a sensitivity toward an acceptance of others, and to understand and appreciate the concept of work and the characteristics and qualifications of various occupations.

Eleventh and twelfth grade students will be assisted by a Digs leadership team comprised of faculty members who

Eleventh and twelfth grade students will be assisted by a Digs leadership team comprised of faculty mem-

## Dallas to issue Mountaineer folder

The Mountaineer folder planned by Dallas School District for the 1978-79 school year will become a reality this year. The administration believed that such a folder was necessary to inform parents and students of school information including police and regulations governing the district's operation.

A revision of the handbook which was once used by the high school has been completed. With cost and the practicability of the folder taken into consideration, each student will receive a folder in September. In addition to the information included, there will be space available for papers, notes, etc.

The Mountaineer is notebook paper size and includes a brief history of the school, the Alma Mater, attendance, guidance and counseling services, cafeteria services, graduation requirements, transportation, student responsibilities, bell schedules, school and personal property, regulation on controlled

substances, discipline code, honor societies, publications, musical organizations, clubs and activity program, and

sports program. The school administration hopes that the Mountaineer will not only be of practical ser-

vice to the students but also serve as a means of communicating to parents and students, the high school program.

## Dallas seeks new teachers, sports aides

The following professional and co-curricular positions are open for the 1979-80 school year in the Dallas School District. Anyone interested in these vacancies should contact Gerald Wycallis in the Curriculum Office before Aug. 24.

Secondary: French-English, Part-time English (Senior High School); Part-time Physical Education

(Junior High School). Co-Curricular: Senior High-Assistant Wrestling; Student Council.

Junior High-Assistant Football Coach; Assistant Wrestling Coach; Girls Hockey; Cheerleading.

### WANTED

**COINS • COINS • COINS**

**BUYING U.S. SILVER COINS**

SILVER COINS—Halves, Quarters, Dimes dated 1964 or prior  
SILVER DOLLARS—Dated 1935 or prior  
CLAD HALVES—Half Dollars dated 1965 thru 1970  
CANADIAN SILVER—Halves, Quarters, Dimes dated 1966 or prior  
WAR NICKELS—Nickels dated 1943 thru 1945 with the mint mark above the dome on the reverse side

United States Gold Coins, Gold Rings marked 14K, 18K etc.  
Denial Gold, Kruggerands, Franklin Mint Sterling, Buffalo Nickels, Liberty Head Nickels, U.S. and Foreign Proof Sets, Mint Sets, Small or Large Collections.

**ALSO BUYING:**

**TOM OCHMAN COINS**  
675-5872  
DALLAS SHOPPING CENTER  
OPEN NIGHTLY 6-9 Sat., 10-5

**BUY** **SELL**

**Office of Continuing Education**

## LUZERNE COUNTY COMMUNITY COLLEGE

Offers Off-Campus Courses FOR THE FALL SEMESTER

AT

### PITTSTON EXTENSION

Oblates of St. Joseph's Seminary Building

**REGISTER AUG. 30 — 6-9 P.M.**

Classes Begin Sept. 10

#### CREDIT COURSE OFFERINGS:

Principles Of Accounting I Principles Of Accounting II Intermediate Accounting I Art Appreciation Automotive Fundamentals Intro. To Bio-Science I Stenographic ABC Shorthand Principles Of Marketing I Salesmanship Business Law I Intro. To Criminal Justice Principles Of Economics I English Composition I English Composition II	News Reporting Elementary French I Intro. To Fire Protection History Of Civilization I Arts And Crafts For Children College Algebra Introduction To Philosophy American Government General Psychology Child Psychology Real Estate Financial Man. Appraisal Of Real Estate I Principles Of Sociology The Family Fundamentals Of Speech
-----------------------------------------------------------------------------------------------------------------------------------------------------------------------------------------------------------------------------------------------------------------------------------------------------------------------------------------------------------------------------	----------------------------------------------------------------------------------------------------------------------------------------------------------------------------------------------------------------------------------------------------------------------------------------------------------------------------------------------------------------------------------

#### PERSONAL DEVELOPMENT — SEMINARS:

Adult Ballet Antiques Astrology Children's Beginning Ballet Bee Keeping Basic Bio-Chemistry For Health Professions Contouring & Caricature Disco Induction Methods in Hypnosis Hatha Yoga	Fundamentals in Interior Decorating Middle Eastern Dance Painting & Sketching Parent Training Workshop Resume Job Hunting Russian Scientific Creativism vs. Evolution Sculpture Slimnastics
----------------------------------------------------------------------------------------------------------------------------------------------------------------------------------------------------------------------	---------------------------------------------------------------------------------------------------------------------------------------------------------------------------------------------------------------------

---

### DALLAS EXTENSION

Dallas Senior High School

**REGISTER AUG. 28 — 6-9 P.M.**

Classes Begin Sept. 10

#### CREDIT COURSE OFFERINGS:

Principles Of Accounting I Principles Of Accounting II Automotive Fundamentals Intro. To Bio-Science I Principles Of Marketing II Salesmanship Personal Administration Business Law I Animal Painting Police Community Relations Principles Of Economics I English Composition I	English Composition II Intro. To Fire Protection American History To 1865 Survey Of Math I Introduction To Philosophy American Government General Psychology Child Psychology Principles Of Real Estate Appraisal Of Real Estate I Principles Of Sociology Fundamentals Of Speech Art Appreciation
-------------------------------------------------------------------------------------------------------------------------------------------------------------------------------------------------------------------------------------------------------------------------------------------------------------------	----------------------------------------------------------------------------------------------------------------------------------------------------------------------------------------------------------------------------------------------------------------------------------------------------------------------------------------

#### PERSONAL DEVELOPMENT — SEMINARS:

Antiques Bicycling & Bicycle Maintenance Black Powder Muzzle Loading The Colonial Experience Microwave Oven Cooking Disco German Fundamentals Of Interior Decorating Who Killed J.F.K.?	Macrame Movement Therapy Needlepoint Enrichment Skills For Parents Painting & Sketching Quilting, Beginning How To Make Remembering A Habit Resume Job Hunting Slimnastics Hatha Yoga
-----------------------------------------------------------------------------------------------------------------------------------------------------------------------------------------------------------------	---------------------------------------------------------------------------------------------------------------------------------------------------------------------------------------------------------------------

For Additional Information Contact Office of Continuing Education

## LUZERNE COUNTY COMMUNITY COLLEGE

Prospect Street and Middle Road  
Nanticoke, Pa. 18634

Phone: 735-8300 — 825-7594 — 459-1600

An Equal Opportunity Affirmative Action Institution

## Dallas High band to begin

The Dallas Senior High School Band will begin its rehearsal and organization for the coming school year according to the following schedule.

Starting Monday, Aug. 27th, the band musicians will rehearse from 9 a.m. to noon in the senior high band room and continue this schedule for the entire week.

Color guard members will report at 1 p.m. on Tuesday, Aug. 28 for practice. The entire band including musicians, color guard, majorettes, flags, strutters, and cheerleaders will practice the field formation on Wednesday, Thursday and Friday, Aug. 29, 30 and 31 from 9 a.m. to noon each day.

Anyone who wishes to be a part of the band for this year is required to attend rehearsals from the above schedule. During these times, uniforms, equipment and field formations will be received for the coming year. Since the band's first appearance will be on Sat., Sept. 1, it is most necessary for everyone to attend. The entire band is under the direction of Lester R. Lewis.

## IT'S NOT TOO LATE

### YOU CAN STILL ENROLL AS A FULL-TIME OR PART-TIME STUDENT IN DAY OR EVENING CLASSES

# CALL 675-2171

PENN STATE/WILKES-BARRE

## COLLEGE MISERICORDIA

### CONTINUING EDUCATION — FALL SEMESTER

FALL SEMESTER BEGINS SEPTEMBER 10, 1979 • CLASSES BEGIN AT 6 P.M. UNLESS OTHERWISE INDICATED

#### CREDIT COURSES

No.	Course	Credits	Day	Instructor
Art 161	Art Appreciation	3	Tu & Th	Tulanowski
Art 355	History Of Women Artists	3	Tu	Tulanowski
Art 365	Elementary Art Methods	3	W	Watter Silva
Art 171	Introduction to Studio Techniques	3	M	Kaleshfski
Psych 232	Research Methods	3	M	Staff
Psych 275	Child & Adolescent Psychology	3	Tu	Rabuck
Psych 381	Assertiveness Training	1	W	Rabuck
Psych 431	Behavior Modification	3	M & W	Rabuck
Swk 103	Community Service	3	M	Fisher/Nuccio
Swk 232	Research Methods	3	M & W	Kuna
Swk 355	Child Welfare Service	3	Tu	Nuccio
Swk 357	Social Work with Aged	3	M	Kuna
Swk 360	Social Work in Health Field	3	W	Lewis
Swk 485	S. T. Communication Skills	1	Th	Staff
Swk 485	S. T. Interviewing Skills	1	Th	Staff
Soc. 121	Principles of Sociology	3	Th	Nuccio
Soc. 321	Family	3	W	Fisher
Geron 241	Intro. to Social Gerontology	3	Th	George
Geron 357	Social Work with Aged	3	M	Kuna
Geron 392	Seminar: Health & Physiology	3	Tu	Giovinco
Bus 201	Economics I	3	M & W	Staff
Bus 203	Principles of Accounting I	3	W	Lawrence
Bus 324	Advanced Accounting	3	Th	Lawrence
Bus 380	Small Business Management	3	Tu	Staff
Bus 390	Human Relations in Management	3	W	Bruszewski
Bus 485	S. T. Business Lecture Series	3	M	Brislin
Educ 251	Reference Services & Materials	3	Tu	Gallagher
Educ 261	Book Selection	3	Th	Gallagher
Educ 363	Methods in Early Childhood	3	M	Schmalz
Educ 342	Educational Psychology	3	M	Mullany
Educ 485	S. T. Career Development	1	W	Lavin
Educ 485	S. T. Gifted in Education	2	Th	Rogan
Educ 485	S. T. Issues, Research, and Programs for Infants and Toddlers	1	M	Smedley
Sp Ed 240	Characteristics of the Handicapped I	4	Tu	Figuera
Eng 266	Western World Literature	3	Th	Lynch
Eng 315	Introduction to Mass Communication	3	Tu	Anderson
Eng 343	Writing for Media	3	W	Mooney
Eng 350	Shakespeare	3	W	Regina Kelly
Eng 352	19th Century Literature	3	M	McGovern
Fr 101	French: Language in Culture	3	W	Tulanowski
Fr 102	French: Language in Culture	3	Th	Tulanowski
Th A 100	Theatre Production	3	M	Anderson
Th A 205	Correction of Communication Disorders	3	Tu	Gill
Th A 229	Art of Film	3	W	Anderson
Hist 101	History of Western Civilization	3	M	Williams
Hist 321	Nazi Germany	3	Th	Fries

#### NON-CREDIT COURSES

##### Philosophical Perspectives on Punishment

Instructor: Dr. Michael Foley  
Meeting Dates: Sept. 12, Oct. 3, Oct. 24, Nov. 14, Dec. 5  
Meeting Time: 6:00 p.m. - 8:30 p.m.  
Meeting Place: A031  
Cost: \$15.00

##### Art As An Expression of the Longer Life

Instructor: Sister JoAnne Jones  
Meeting Dates: November 5, 12, 19, 26  
Meeting Time: 7:00 p.m. - 9:00 p.m.  
Meeting Place: Room A031  
Cost: \$15.00

##### Meeting Midlife With Hope

Instructor: Sister Constance Kozel  
Meeting Dates: October 4, 11, 18, 25; November 1  
Meeting Time: 7:00 p.m. - 9:00 p.m.  
Meeting Place: Room A327  
Cost: \$15.00

##### Slimnastics for Women

Instructor: Geraldine Wall  
Meeting Dates: 6 consecutive Thursdays beginning Sept. 13  
Meeting Time: 7:30 - 8:30 p.m.  
Meeting Place: Gym  
Class is limited to 20 Persons  
Cost: \$15.00

##### Bird Study

Instructor: Edwin L. Johnson  
Meeting Dates: Sept. 15, 22, 29; Oct. 6, 20, 27; Nov. 3, 10  
Meeting Time: 8:00 a.m. - 11:00 a.m.  
Meeting Place: Room A012  
Class is limited to 20 persons  
Cost: \$30.00

#### CONTINUING EDUCATION OFFICE HOURS

The Continuing Education Office is open Monday through Friday from 8:30 a.m. to 4:30 p.m. In addition, the office is open on Monday from 5:30 p.m. to 8:00 p.m.

During the first week of classes, the Office will be open Monday through Thursday from 5:30 p.m. to 8:30 p.m.

#### REGISTRATION CAN BE COMPLETED

— by mail, using the tear off included in the brochure.  
— in person prior to the beginning of the Fall term semester from 8:30 a.m. to 4:30 p.m. in the Continuing Education Office.  
— in person on Thursday, September 6, 1979 - 7:00 p.m. to 8:00 p.m. in the Continuing Education Office.

#### ACADEMIC EXPENSES

Tuition is \$70 per credit for part-time students.  
Science Lab Fee: \$50

### REGISTER EARLY — ENROLLMENT LIMITED