



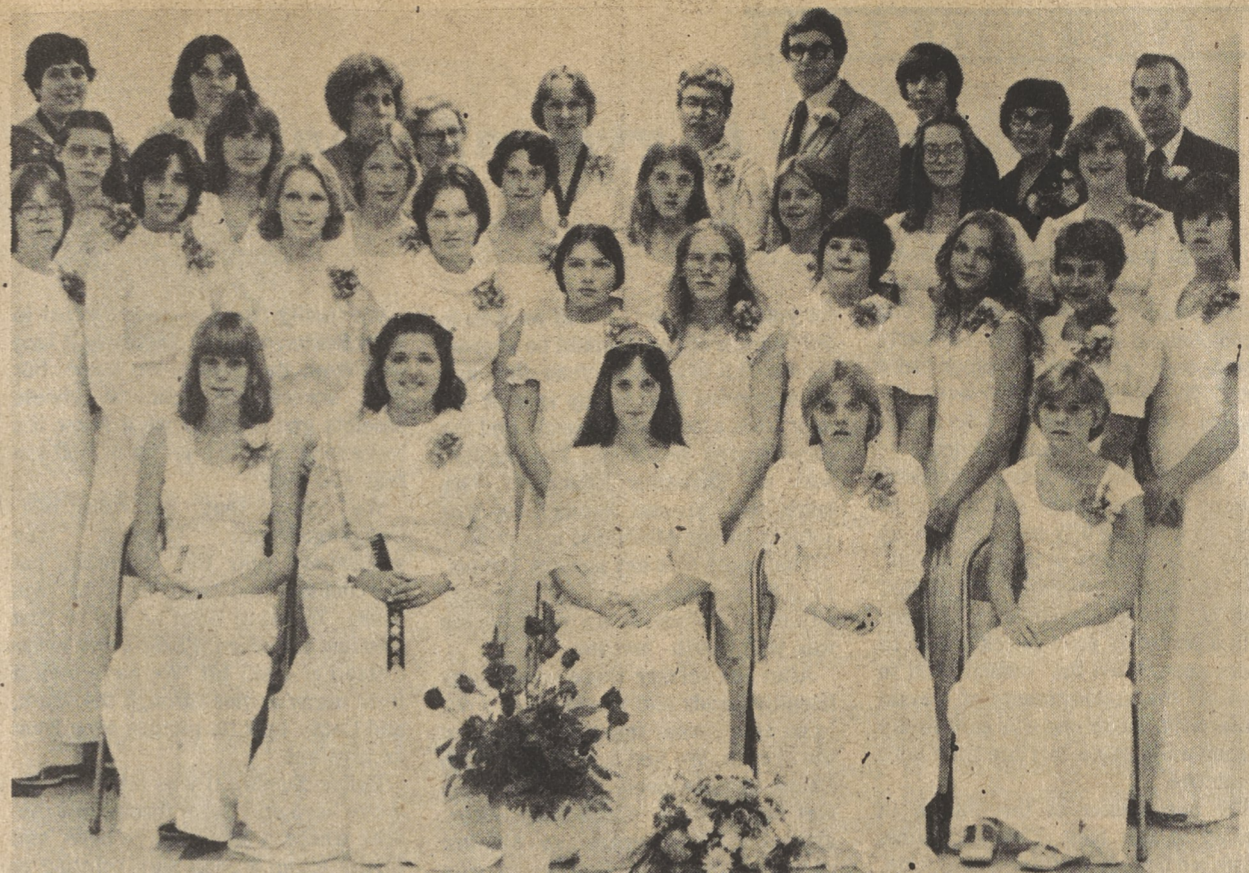
CONCERT SOLOIST—Daniel Falcucci, son of Mr. and Mrs. Daniel Falcucci, Harveys Lake, will perform as soloist with Sinfonia da Camera, this Saturday evening in Walsh auditorium, College Misericordia. A sophomore music major at College Misericordia, he has been a member of Sinfonia da Camera since 1974. Daniel is a student of Ferdinand Liva's and has performed in former Sinfonia concerts.

**Adrian King
semi-finalist
in scholarship**

Adrian King of Dallas, a senior at Phillips Academy, Andover, Mass., was notified that he has been named a semi-finalist in the 23rd annual National Merit Scholarship Program. He is the son of Mr. and Mrs. Hugh P. King, 241 Machell Avenue. He is among the 15,000 highest scoring students who will have an opportunity to continue in competition for about 3,900 Merit Scholarships to be awarded in the Spring of 1978.

Last spring, he was selected to receive the Rensselaer Medal awarded for excellence in Mathematics and science by the Rensselaer Polytechnic Institute.

A graduate of Wyoming Seminary Day School he has been active in dramatics at Phillips Academy.



RAINBOW ASSEMBLY—Installation of Worthy Advisor and Officers of Charles James Memorial Rainbow Assembly of Dallas was held recently at the O.E.S. Building at Dallas. The girls annual service project will be helping with the O.E.S. turkey dinner on Nov. 12 at Dallas Sr. High School. Officers and members present were, first row, left to right, Reba Boldon, Donna Johns, jr. P.W.A., June Ellen McGough, newly installed Worthy Advisor, Susan Gramley, Ann Martinchak; second row, Roxanne Wolfe, Suzanne Williams, Leigh Ann Schoner, Cindy Duffield, Sheila Johnson, Marie Augustine, Nancy

Evans, Diane Hazeltine, Patricia Bronson, Holly Ridall; third row, Melanie Williams, P.W.A. Dianne Wendling, Janice Melzgar, Jody Lowery, Sandy Gramley, Janet Bigoski, Gayle Kirk, Jeanine Bolinski; fourth row, Jayne Ann McGough, P.W.A., Jill Odell, guitarist, Sara Barakat, P.W.A., Mrs. Martha Bradbury, M.A., Cory Zimmerman, Grand Charity of Pa., P.W.A., Mrs. Shirley Zimmerman, Rev. Lynn Rothrock, St. Paul's Lutheran Church, Shavertown, Kevin McGough and Mr. and Mrs. Patrick McGough, brother and parents of Worthy Advisor. (Photo by Brian Porter)

Shavertown UM Women plan beef dinner

The United Methodist Women of Shavertown United Methodist Church will serve their annual roast beef dinner on Wednesday, Oct. 12, from 5 until 7 p.m. in the church social rooms.

Mrs. Gordon Earles,

chairman for the event, announced that Mrs. Edna Johnson and Mrs. Alice Borthwick will serve as ticket chairmen.

The menu will consist of tomato bisque, roast beef, fluffy whipped potatoes and gravy, green beans,

cabbage salad, hot rolls and butter, a variety of pies and beverages.

All items served will be homemade by the women of the church. Tickets are available now and will not be sold at the door.

*dress  your table -
two place settings free!*

Silver Elegance

Regal bands of sterling on classic white. Perfectly at home in the most sophisticated formal setting, and equally appropriate for casual everyday dining.

English Village

The traditional serenity of an English country scene, depicted in delft blue, and highlighted by a full garland border. Charming in any setting.



Your choice of these two patterns

EXTRA BONUS

When you collect 8 Bonus Coupons, which are packed in the #2 Units and in the 61-piece set, we'll give you a beautiful Covered Casserole and Electric Warming Stand absolutely FREE!

Here's how to get your **FIRST** and **EIGHTH** place settings of exquisite English Ironstone dinnerware absolutely **FREE!**

You get your **FIRST** place setting free when you open a new Savings Account for \$50 or more, or add \$50 or more to your present Savings Account.

Take your choice of the two beautiful patterns shown above — the pastoral charm of English Village or the classic simplicity of Silver Elegance . . . both sets are dishwasher-safe and oven-proof.

Once started, you can add to your collection of imported English dinnerware by purchasing an additional place setting or accessory unit for only \$4.72 plus tax each time you make an additional deposit of \$25 or more to your Savings Account.

Your **EIGHTH** place setting will also be free with your deposit.

Accessory units are as follows: Unit #2, Add-on setting (Cereal/Soup Bowl, Salad/Luncheon Plate, Bread & Butter Plate) . . . Unit #3, Vegetable Bowl . . . Unit #4, Cream & Sugar . . . Unit #5, Large Platter. If you just can't wait, you can purchase the entire 61-piece service for 8 for just \$70 plus tax with a Savings Account deposit of \$1,000 or more, or for a mere \$60 plus tax with a Savings Account deposit of \$5,000 or more.

Get started now . . . you'll love the look of English Ironstone on your table — and the warm feeling of security that goes with a growing Savings Account.

Sorry — just one free "starter" place setting, one free "eighth" place setting and one Extra Bonus (see box at left) per family.



United Penn Bank

The bank you can grow with®
MEMBER F.D.I.C.