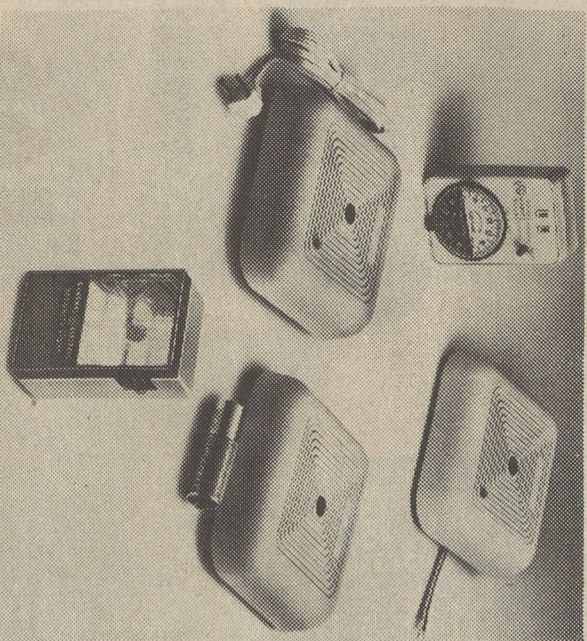


## Spring cleaning time should include a good safety check



While you are cleaning your home this spring, you probably are trying to get things thorough and straggled out from the attic to the basement.

But a neat and clean home doesn't always mean a safe one. Consider the many things that can be done to protect you and your family to make your home safer.

Whether at home or away you want your family protected against the danger of fire and threat of burglary. General Electric answers consumer needs with Home Sentry™ smoke alarms. Home Sentry™ variable timers and the Home Sentry™ security light.

Smoke alarms are available in three different Home Sentry models, battery operated, wired-in and in a corded model that plugs into an electric outlet. Each GE smoke alarm continuously monitors the surrounding air and sounds a loud 85 decibel alarm when it senses smoke.

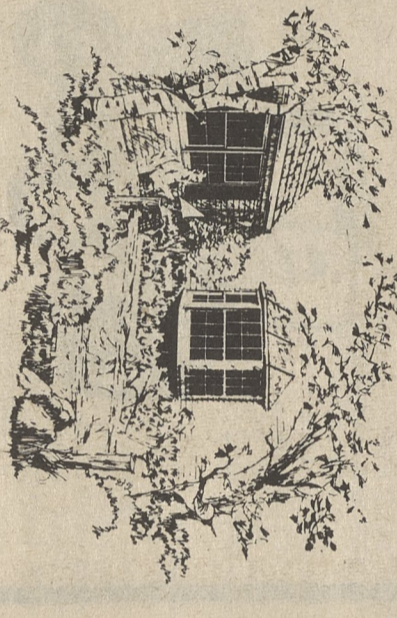
According to police, lighting ones home is one of the most effective deterrents to burglary. To give your home that "occupied" look while you're away, use timers to turn

HELP PROTECT your home and family with these three products from General Electric: the Home Sentry smoke alarm, the Home Sentry variable timer, and the Home Sentry security light.

on your lamp or radio. Home Sentry variable timers from General Electric will turn your lamp and radio on and off automatically, night after night and will do the job at different times.

The rechargeable Home Sentry security light functions as a power failure light. It can be removed from the outlet for use as a flashlight or, left in the

## Before you move consider that home modernization may be less costly



Home remodeling can be a practical and economical way to add more space and make a house more livable. Often it can be accomplished at less than the cost of moving.

It's been estimated that broker's fees, closing costs, moving costs and other incidental amounts to about 10 percent of a home's value when someone sells his home and buys another. That's one reason many homeowners turn to remodeling instead.

Modernization, however, involves many decisions that will affect the homeowner's lifestyle for many years to come. Choices regarding style, color and location are important and should be weighed carefully.

Another decision that has become crucial in the wake of steadily rising heating and cooling costs involves the choice of building products that are designed to conserve energy.

Take windows, for example. Andersen Corporation of Bayport, Minnesota, says a decision to replace old, worn, drafty units with modern, factory-engineered windows shouldn't be limited to the retail price.

Andersen points out that the cost of owning new windows is equally important in these days of continually rising fuel prices. The leading manufac-

ture of windows and gliding doors says the best way to reduce heat loss through windows is to do the same as is done with ceilings and walls — add insulation. This can be accomplished with precision-made, weatherproof windows.

Characteristics of a weatheright window include double-pane insulation, weatherstripping and seal and frame materials made of wood sheathed in low-maintenance vinyl.

Double-pane insulating glass, standard in Andersen Perma-Shield windows and gliding doors, achieves a major part of

the fuel-saving benefits of tight-fitting storm sash over single-glazed windows, but without the bother and extra window washing required by separate storm sash.

All Perma-Shield units also have a sheath of rigid vinyl over preservative-treated wood core sash and frames. Factory-applied weatherstripping keeps heat-robbing air infiltration well below recognized standards.

Additional help with remodeling is in a free 20-page booklet which can be obtained by writing Andersen Corporation, Dept. K, Bayport, Minnesota 55003.

### PENNSYLVANIA NURSERYMEN

**HAVE SEEDS FOR ALL NEEDS!**

Professional products are formulated for Pennsylvania soil and climate.

**PREMIER** - Our best mix! Contains famous Baron Kentucky Bluegrass plus other top variety seeds. Hardy and highly disease resistant. Covers 1600 sq. ft. Suggested retail price, 4 lbs. \$9.39.

**SHADE** - Special shade formulation grows in areas with little sun. Baron Kentucky Bluegrass plus other top varieties. Covers 1400 sq. ft. Suggested retail price, 4 lbs. \$6.49.

**ECONOLAWN** - Quick cover for large areas, at low cost. Covers 1200 sq. ft. Suggested retail price, 4 lbs. \$4.19.

Nobody knows Pennsylvania's lawn needs better than your Pennsylvania Nurseryman. Trust him!

Only available from local members of: PENNSYLVANIA NURSERYMEN'S ASSOCIATION

## Now Open

# DECKER

LANDSCAPING & SUPPLY CO.

"The store with the personal touch"

Layton Road, Chinchilla 586-0222

**OPEN MONDAY THROUGH SUNDAY**

## Solar Heat & Insulation

It isn't hard to diet these days. Just eat what you can afford.

by **H. H. FARRAR & SON**  
Tunkhannock, Pa. 18657  
Phone (717) 836-4554

**Complete Insulation Using**

- Urethane
- Urea Formaldehyde
- Blown-In Fiberglass
- Styrofoam Board

Solar Heat by Solar Shelter Engineering Inc.

### Super Specials from WESTERN AUTO

Route 6 Scr. C-Dale Hwy. 876-0521

Childrens SHOES 50% off	SNEAKERS \$1.98	Work SHOES \$5.88 & \$9.95
JEANS All sizes from \$3.98 - \$9.95	PIPE & FITTINGS 50% off	
SEEDS 11¢	CLAY BIRDS \$3.95	TAPES \$2.00
	PARTS FOR BIKES, TIRES & TUBES	

IF IT IS MADE WE HAVE IT

FISHING & LOTTERY TICKETS HERE

## PSU says try acrylic bathrooms

Acrylic bathtubs and shower units require special care, say Extension specialists at The Pennsylvania State University, but the smooth bathtub lines of molded bathtub shower units make necessary daily care easy.

For everyday cleaning use a soft cloth and any liquid detergent.

Acrylic units are usually reinforced with fiberglass and provide a thick, strong, smooth surface. Using abrasive or solvent-base cleaners can mar this surface. Instead, use dry powdered detergent on a damp cloth. This combination will provide adequate, mild abrasive action to clean the unit.

Remove plaster, glue or paint by scraping gently with a soft wood stick or rice paddle. Metal scrapers, wire brushes or other metal tools should not be used on acrylic tubs or shower units, remind the Extension specialists.

Remove light scratches and dulled areas by rubbing an automotive-type body cleaning compound on the surface. Follow this cleaning with a light application of liquid wax-type product used for home appliances.

## Create a microclimate to save money and energy

Homeowners who want to save money on their utility bills can take a few tips from their grandparents.

Before technology delivered us from the discomforts of our climate, people used natural methods for cooling their houses in the summer and conserving the heat they had in the cold months. The natural ways are still available to us and they are surprisingly inexpensive and easy to do.

With energy in short supply and rising in cost, everyone has to be concerned with conservation.

Until government and industry come up with a solution to the problem of scarce fossil fuels, the American Association of Nurserymen points out three smart things homeowners can do to use their energy supplies wisely around the house.

First, make the heating and cooling systems work more efficiently and use them conservatively. Second, take steps to reduce energy needs in the home by controlling the effects of climate on the house itself. Trees and other plantings



Insulation in the garage saves energy

According to the energy experts at the Certain-Teed Home Institute, you can easily insulate the wall between your home and an attached unheated garage to help eliminate drafts and reduce cooling and heating bills in your house.

Just purchase kraft-faced reverse flange fiber glass insulation. It is 3 1/2 inches thick and is made specifically for application in places like this where you

can help do all these things. These are the methods our grandparents used. They opened their windows on hot days and let cool breezes run through the house. These breezes were nicely channeled by thick hedges planted in the right places outside.

The big leafy shade trees were located where they rained shade on the house to keep it cool and comfortable during the summer.

In effect, they created their own "microclimate" in and around their houses. Regardless of the weather outside, those old houses managed to remain comfortable all year around without expensive, fuel-consuming air conditioners and sophisticated heating units.

Even in modern houses homeowners can create their own energy-saving "microclimate" which will not only help save money and energy, but which enhances the value of the property.

Proper landscaping with trees, bushes, shrubs, evergreens and other plantings requires just good common sense and a little professional advice from a local garden center or nurseryman.

Shade trees, for example, are among nature's most efficient climate controllers. In the summer, their big leafy umbrellas provide a cooling shade in or around a house. They also give off cooling vapor through transpiration.

In winter, they drop their leaves and allow the warming effects of the sun to come through. Smart planting and energy-saving measures can help every modern homeowner create his own energy-saving "microclimate." That means the furnace and the air conditioner don't have to work so hard and that means a lot to the family budget.

WELCOME TO THE NORTHEASTERN BANK BUILDING PUBLIC SQUARE

First REALTY

829-2654

## AMF Brings Out The Best In You

See the complete line up of AMF Riders, Lawn Tractors and accessories at POWELL'S SALES & SERVICE

R.D.1 Justus Corne Clark's Summit

CUT 15% Model 1288 \$1,016	CUT 15% Model 1284 \$886.50	CUT 15% Model 1281 \$828	CUT 15% Model 1261 \$748	CUT 10% MODEL 1291 \$540
----------------------------	-----------------------------	--------------------------	--------------------------	--------------------------

Features include: 10.0 HP Synchro-balanced Briggs & Stratton Engine, 42" Three-blade Cut, Electric Start, Heavy duty Transaxle drive, 10.0 HP Synchro-balanced Briggs & Stratton Engine, 36" Twin Blade Cut, Rear Discharge Mower Housing, Electric Start, Heavy Duty Transaxle Drive, 8.0 HP Briggs & Stratton Synchro Balanced Engine, 30" Cut, Full Floating Mower, Individual Clutch and Brake Elec. Start w Lights.

Waymart Building Center Inc. Waymart, Pa.

"Lowest prices in the area"

WE ARE NOW OFFERING SPRING DEALS ON QUANTITY OF LUMBER

We deliver PHONE 488-6123