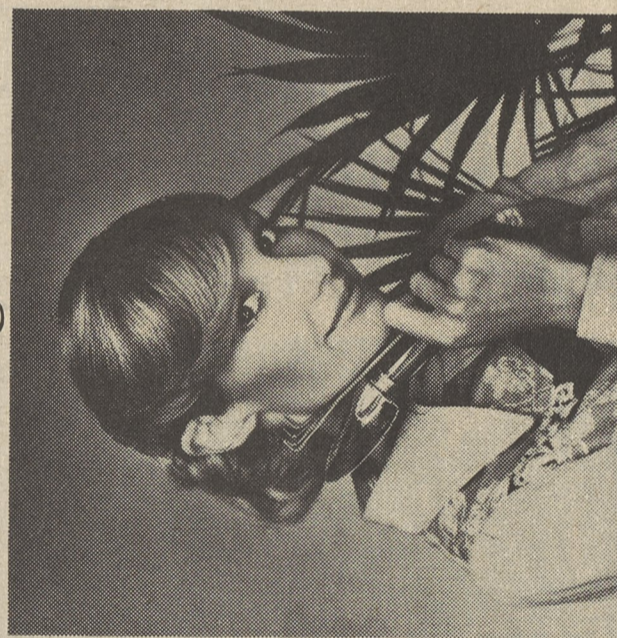


# Now's the time to plan for a colorful blossoming harvest



With warm weather just around the corner, it's time for "green thumbs" to draw up lawn and garden plans that can turn a winter-weary home into the showpiece of the block.

Whether you're a seasoned gardener or an amateur florist with a penchant for plants, a little planning, a touch of common sense and a lot of TLC can produce a colorful blossom-harvest without a lot of "growing pains."

To help you and your lawn prepare for the spring debut, Gillette—makers of Earth Borm garden-fresh shampoos and creme rinse and conditioners—suggests you follow these down-to-earth tips for pre-spring garden planning:

- Get a jump on spring planting by potting seeds of flowering annuals—like marigolds and petunias—in clay pots indoors.
- Later, when the ground thaws, transplant the seedlings into your outdoor garden for a colorful array of early spring blossoms.
- Take an inventory of gardening tools and equipment. Check to see that lawn mowers and hedge trimmers are in running order, and check supplies of fertilizer and pesticide so as not to duplicate on the first big buying trip to the nursery.
- To begin nursing your lawn to a thriving lush green, mow grass down to a bare half-inch height. This eliminates dead and scorched grass blades and makes way for fresh growth. Fertilize

the lawn as soon as the ground thaws.  
• Make a diagram of your intended vegetable patch—taking care to estimate space needed for lettuce, corn, tomatoes and other fresh salad ingredients so as not to overcrowd the crop.  
• Like plants that need extra care to blossom after winter's chill, hair, too, needs special attention to stave off the drying effects of the cold weather season. For best results, beauty experts at Gillette recommend a non-alkaline shampoo like Earth Borm that helps to make hair healthy and shiny and leaves it smelling fresh and clean no matter what the growing conditions.  
During winter's last cold breath, as you and your lawn prepare for the spring scene, be sure to plan ahead and use a little common sense to create a natural setting that enhances the good looks of you and your home.

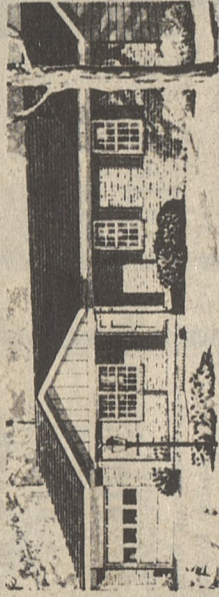
## Architect can help save money

Many a homeowner is reluctant to call on an architect for remodeling because an architect is believed to be unnecessary.

This is not always true and may turn out to be a penny-wise, pound-foolish omission, according to the National Home Improvement Council.

The homeowner who wishes his home to be truly well-designed would do well to consider using an architect for his remodeling project.

## GERALD DECKER BUILDER



## CUSTOM HOMES

"We Do It All" RESIDENTIAL-COMMERCIAL

222-4345

R.D.1 DALTON, PA.

## The green thumb look

If you enjoy the look of foliage, some of these decorating tips may be just right for your home:

- Group imitation plants of various sizes and shapes to camouflage ugly radiators or exposed air conditioners.
- Tall artificial plants can brighten up dark corners. Install back-lighting to cast romantic shadows on the walls at night.
- Decorate unused fireplaces with beautiful imitation plant arrangements.

While "do-it-yourselfers" typically install insulation that has been factory bonded into a "blanket" or "bat" form, contractors in stall "loose-fill" insulation, clean, finely chopped tufts of loose fiberglass, which are pneumatically blown between attic floor joists and wall stud cavities.

## TV TONIGHT

Tonight on *Emergency*, the paramedics have to extract a lollipop from Kojak's mouth, where it has become permanently imbedded.

... Hear about the lion so famous he's listed in "Zoo's Who"?

With a bit of ingenuity, your home can look like a veritable Garden of Eden. And firelike plants are not affected by heat, cold or the lack of light.

To keep these plastic beauties looking their attractive best, spray them with Glass\*Plus® glass appliance and cabinet cleaner, and wipe with a clean cloth or damp sponge during the course of your usual housekeeping schedule.



The South China Sea the largest sea in the world, covers an area of 1,148,500 square miles. Its average depth is 4,802 feet.

# NEXT WINTER GUARANTEED TO BE BETTER

- your fuel bills will be lower
- your homes will be warmer
- your property will increase in value

You Call Today To Have Your Home Insulated By

## HARFORD BUILDERS

HARFORD, PA. 18823 434-2131 or 434-2157 (HOME) 24 HOUR SERVICE

Call Now

- before the 1977 price increase
- before the rush

Clip Out This Form For A Special Discount

NAME \_\_\_\_\_  
 ADDRESS \_\_\_\_\_  
 PHONE \_\_\_\_\_  
 Siding  Storm Windows  Remodeling  
 Roofing  Cornice Covering  Garage

## Next Winter Guaranteed To Be Better

With a bit of ingenuity, your home can look like a veritable Garden of Eden. And firelike plants are not affected by heat, cold or the lack of light.

To keep these plastic beauties looking their attractive best, spray them with Glass\*Plus® glass appliance and cabinet cleaner, and wipe with a clean cloth or damp sponge during the course of your usual housekeeping schedule.

With a bit of ingenuity, your home can look like a veritable Garden of Eden. And firelike plants are not affected by heat, cold or the lack of light.

## TV TONIGHT

Tonight on *Emergency*, the paramedics have to extract a lollipop from Kojak's mouth, where it has become permanently imbedded.

... Hear about the lion so famous he's listed in "Zoo's Who"?

With a bit of ingenuity, your home can look like a veritable Garden of Eden. And firelike plants are not affected by heat, cold or the lack of light.

To keep these plastic beauties looking their attractive best, spray them with Glass\*Plus® glass appliance and cabinet cleaner, and wipe with a clean cloth or damp sponge during the course of your usual housekeeping schedule.



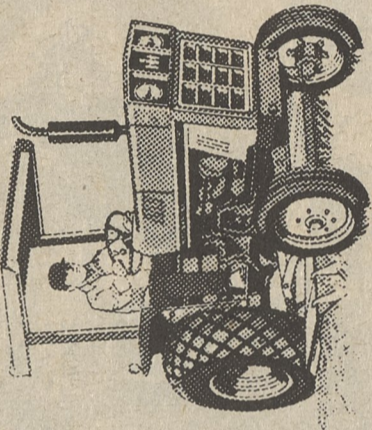
The South China Sea the largest sea in the world, covers an area of 1,148,500 square miles. Its average depth is 4,802 feet.

# GRAND OPENING SALE DAYS

NOW THRU APRIL 30

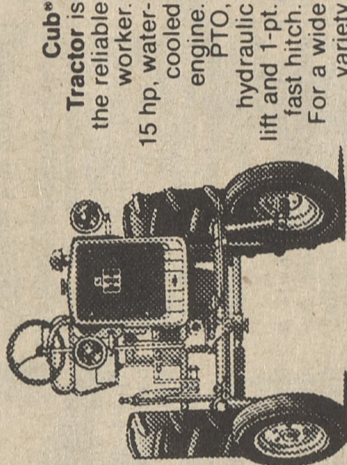
## FREE BOOK OFFER

For your free copy of our Good Earth Handbook, full of useful tips, drop in on your local IH dealer.



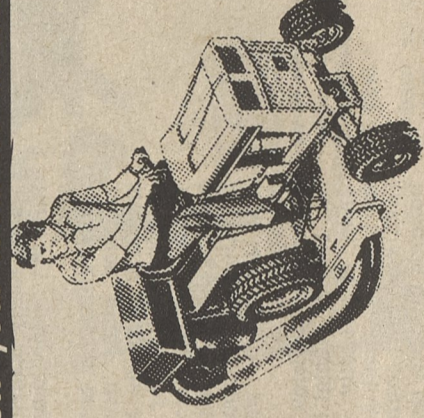
New International® 284 COMPACT TRACTOR Powerful 28 hp water-cooled engine, 10 speed transmission, 2-speed PTO and 3-pt. hitch.

\$4,919



Cub® Tractor is the reliable 15 hp, water-cooled engine, PTO, hydraulic lift and 1-pt. fast hitch. For a variety of jobs.

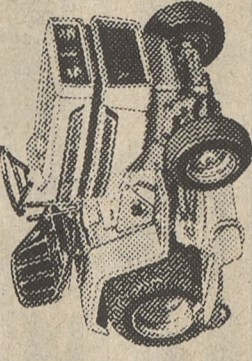
SAVE \$400



Cadet® Lawn Tractors with 36" mower for smooth cut, 8 hp engine, hydrostatic or gear drive transmission. Key start. Optional 5-bu rear bagger.

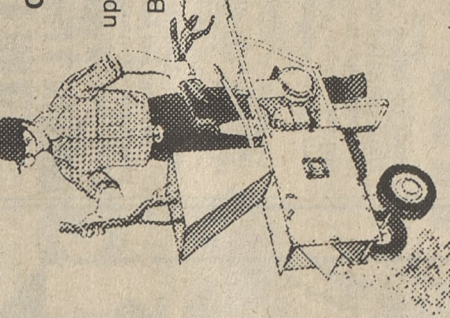
\$995

7 and 8 h.p.



Rotary Tiller comes with easy-start, 5 hp engine, fingertip controls and adjustable width and depth controls. 26" swath.

Reg. \$339.95 SAVE \$\$\$



Shredder-Grinder reduces grass clippings, leaves, limbs up to 1 1/2" to a rich organic mulch. Big hopper, 5 hp engine and 24 hardened steel blades.

Reg. \$355 SAVE \$\$\$



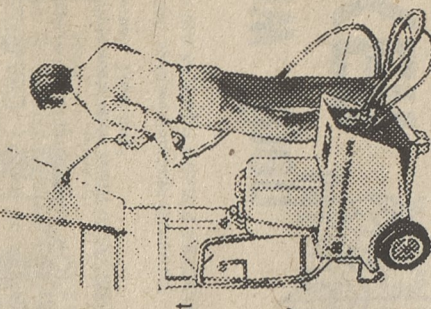
Three Power Mowers, including Deluxe 21" model with big 2 1/4 bu. rear grass bag. Easy-start 4 hp engine. Self-propelled.

Prices start at \$165



Come in for a great buy today.

Reg. \$452 SAVE !!!



Power Washer Delivers 500 psi pressure to blast away dirt and grime. Cleans trucks, cars, campers, siding, soffits, patios and driveways.

Providing Service to the Abingtons for 40 years.

# HROBUCHAK'S GARAGE

RD 3, CLARKS SUMMIT