

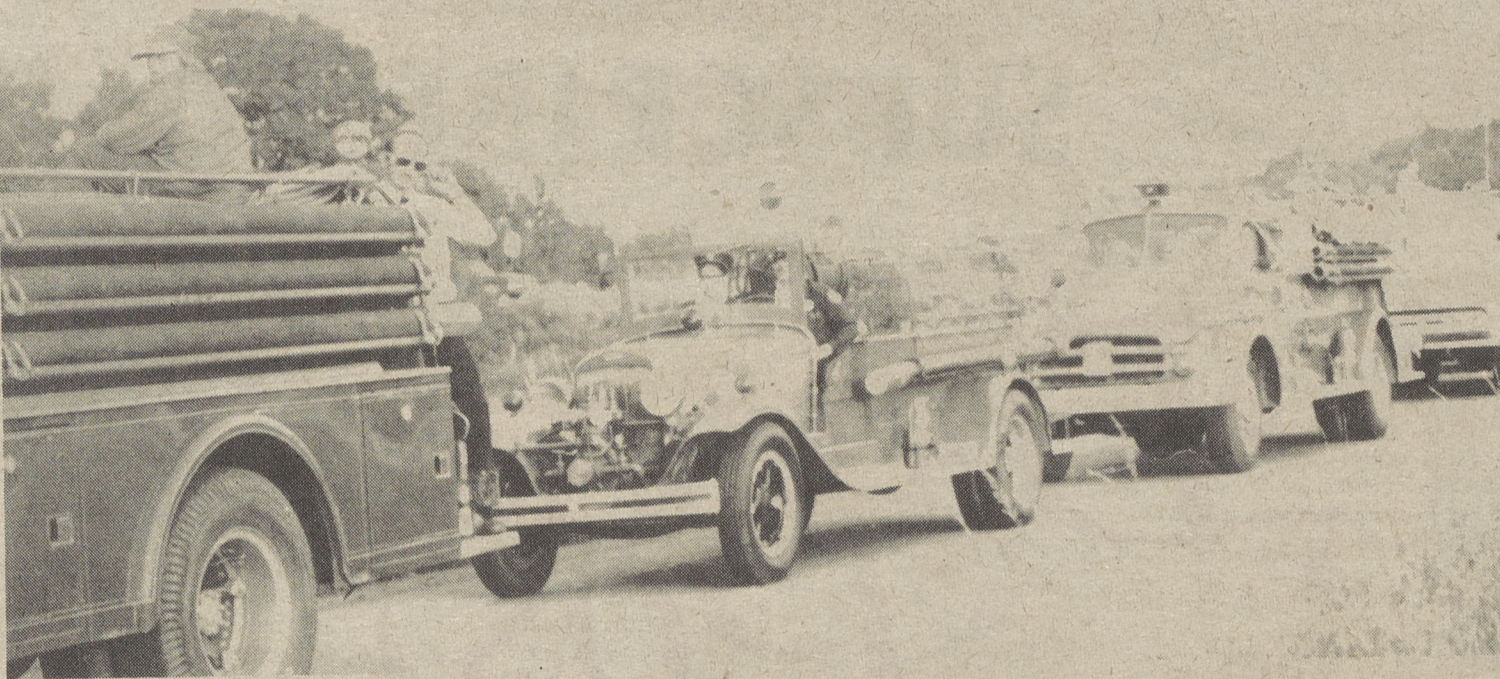
LEHMAN BAND--The internationally-acclaimed Lake-Lehman High School Marching Band is scheduled to perform at the Luzerne County Fair sponsored by the Dallas Area Fall Fair Assn. this Friday at 6:30 p.m.

Exceptional children's chapter to meet

Northeastern Pennsylvania Council for Exceptional Children, Chapter 416, will meet at the Shadowbrook Country Club, Tunkhannock, on Sept. 14 at 6 p.m.

The dinner meeting will be followed by an informative speaker. The five county chapter is a professional organization which promotes the advancement and education of all exceptional children, both handicapped and gifted.

Local officers are Miss Geraldine Ruddy, director of special education, Wilkes-Barre Area School District and Edward F. Mark, psychologist and educational specialist in I.U. 18, elected as president and vice-president, respectively for the 1976-77 term.



PARADE--Parade time is 7:45 p.m. Friday at the Luzerne County Fair. Here participants in last year's fair approach the Lehman Horse Show Grounds where the fair is held.

(Continued from Page Sixteen)

Exhibitors

- Bryant's Trailers
- Brothers Four
- Pocono Promotions
- Lenny's Sales
- Midway Motors
- Goodwin VW
- State Correctional Institution at Dallas
- Raymond Brigart
- Carverton Dirt Cycle
- Back Mt. Mini-Football League
- Manor Antiques
- Fashion Wagon
- Bicentennial Council
- Luzerne Co. Republican Party

WNAK

Radio 73

Sounds Good