

# FREE EXTRA BONUS S&H GREEN STAMPS

1. WHEN YOUR PURCHASE IS \$10. OR OVER USE COUPON (A).
  2. WHEN YOUR PURCHASE IS \$20. OR OVER USE COUPON (B)
  3. WHEN YOUR PURCHASE IS \$30. OR OVER USE COUPON (C)
- USE ANY COMBINATION OF (A) (B) OR (C) COUPONS IF YOUR TOTAL PURCHASES ARE OVER \$30.

**100**  
BONUS S&H GREEN STAMPS  
WITH YOUR PURCHASE OF \$10.00 OR MORE (EXCLUDING MILK PRODUCTS OR CIGARETTES)  
EXPIRES: APRIL 8, 1974

**200**  
BONUS S&H GREEN STAMPS  
WITH YOUR PURCHASE OF \$20.00 OR MORE (EXCLUDING MILK PRODUCTS OR CIGARETTES)  
EXPIRES: APRIL 8, 1974

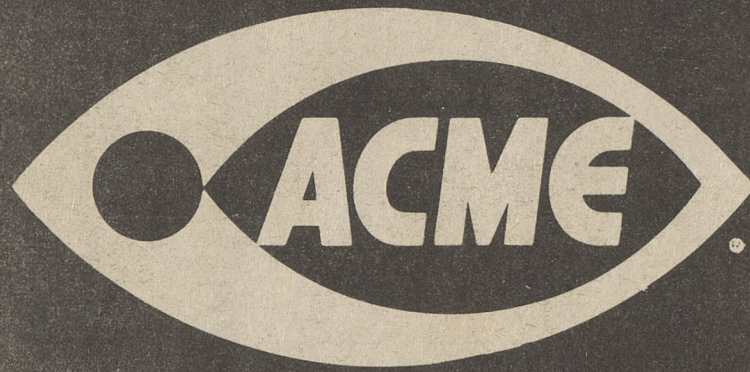
**300**  
BONUS S&H GREEN STAMPS  
WITH YOUR PURCHASE OF \$30.00 OR MORE (EXCLUDING MILK PRODUCTS OR CIGARETTES)  
EXPIRES: APRIL 8, 1974

WORTH 26¢

SPAGHETTI SAUCE  
**RAGU** PLAIN MEAT 2-LB. JAR **49¢**  
MUSH.

WITH THE PURCHASE OF \$10.00 OR MORE AND THIS COUPON. (EXCLUDING MILK PRODUCTS OR CIGARETTES) (ONE COUPON PER SHOPPING FAMILY)

EXPIRES: 4-8-74 (CO-5)



WE REDEEM FEDERAL FOOD STAMPS  
QUANTITY RIGHTS RESERVED. NONE SOLD TO DEALERS.  
PRICES EFFECTIVE THRU APRIL 6, 1974

For Your Convenience  
**ACME MARKETS**  
DALLAS — SHAVERTOWN  
**OPEN DAILY 'TIL 9 P.M.**

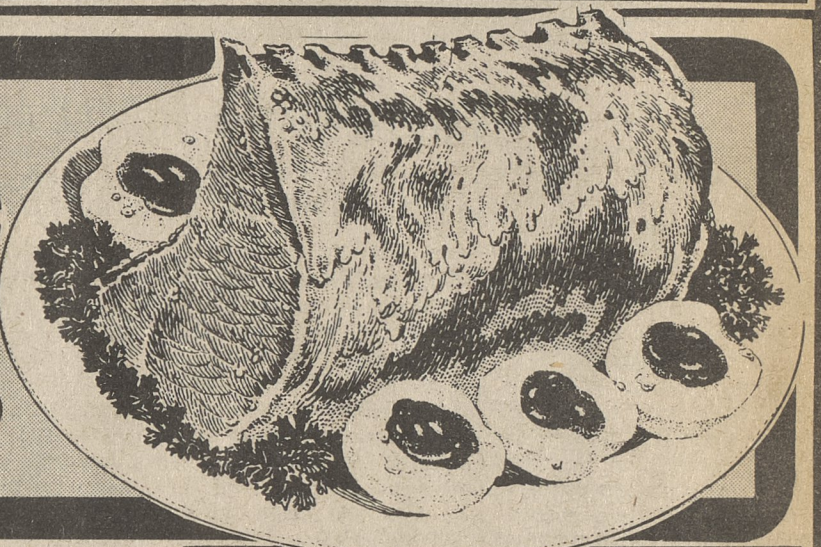
## MEAT PRICES ARE DOWN!

"CUT FROM YOUNG CORN FED PORKERS" TENDER BLADE ROAST SIRLOIN ROAST

**PORK LOINS** 5-6 LB. AVG. **79¢** 5-6 LB. AVG. **89¢**

LB. (FORMERLY RIB HALF) LB. (FORMERLY LOIN HALF)

CENTER CUT PORK CHOPS OR ROASTS LB. \$1.29



TENDER COUNTRY STYLE RIBS LB. **89¢**  
(FORMERLY COUNTRY STYLE SPARE RIBS)

PORK SHOULDER BLADE BOSTON ROAST (WHOLE) LB. **79¢**  
(FORMERLY PORK BUTTS)

FRESH BAKED HOT CROSS BUNS 12-OZ. PKG. **59¢**

SAVE 6¢-FRESH SUGAR DONUTS 2 10-OZ. PKGS. **\$1.00**

SAVE 10¢-TOWN SQUARE (FROZEN) APPLE or CHERRY PIES 2 20-OZ. PKGS. **\$1.00**

SAVE 10¢-IDEAL FROZEN ORANGE JUICE 2 12-OZ. CANS **79¢**

DINNERWARE 7 INCH SALAD PLATE ea. **39¢**  
WITH EACH \$3.00 PURCHASE

IDEAL GRANULATED SUGAR 5 -LB. BAG **89¢**

RATH'S ROLL SAUSAGE 1-LB. ROLL **79¢**  
CYPRESS BRAND

SLICED BACON 1-LB. PKG. **69¢**

TENDER BEEF CHUCK CUBED STEAK 1-LB. **\$1.49**

LANCASTER BRAND FRANKS ALL MEAT 1-LB. PKG. **99¢**

SERVBEST FROZEN WHITING FILLET 14-OZ. PKG. **69¢**

FROZEN TURBOT FILLET 1-LB. **89¢**

STAR-KIST FROZEN TUNA PIES 3 8-OZ. PKGS. **\$1.00**

SILVER FLOSS SAUERKRAUT 2-LB. BAG **39¢**  
(Claussen Qt. 69¢)

## LOW PRICES PLUS S&H GREEN STAMPS

IDEAL "OUR FINEST QUALITY" RED BEETS SLICED OR WHOLE 4 1-LB. CANS **\$1.00**

IDEAL "OUR FINEST QUALITY" CORN WHOLE OR CRUSHED 4 1-LB. CANS **\$1.00**

IDEAL "OUR FINEST QUALITY" SWEET PEAS BLUE BAND 4 1-LB. CANS **\$1.00**

IDEAL CUT "OUR FINEST QUALITY" GREEN BEANS 4 1-LB. CANS **\$1.00**

IDEAL "OUR FINEST QUALITY" PEAS & CARROTS 4 1-LB. CANS **\$1.00**

BALA CLUB ASSORTED FLAVORS BEVERAGES 6 12-OZ. CANS **69¢**

(SAVE 10¢) IDEAL SWEET PICKLES 22-OZ. JAR **59¢**

QUARTERED CHICKEN LEGS LB. **49¢**

Lancaster Brand Beef Chuck BONELESS POT ROAST LB. **\$1.29**  
(FORMERLY BONELESS CHUCK ROAST)

LIGHT 'N LIVELY YOGURT "ALL FLAVORS" 3 8-OZ. CUPS **\$1.00**

LUDEX ASSORTED JELLY EGGS 1-LB. BAG **39¢**  
SEE OUR BIG VARIETY OF EASTER CANDIES!

SPEEDUP BLEACH 1-GALLON JUG **39¢**

KEN-L-RATION DOG FOOD 6 15½-OZ. CANS IN PACK **\$1.09**

6-OZ. STEMMED WINE GLASS EA. **39¢**  
WITH EACH \$3.00 PURCHASE

FOR BABIES! SIMILAC QT. CAN **63¢** LOW PRICE

FRESH PRODUCE  
FRESH SWEET JUICY CALIF. SUNKIST  
**NAVEL ORANGES**  
10 FOR **89¢**

FRESH LONG GREEN CUCUMBERS 3 for **39¢**

FRESH TEXAS LOOSE RED BEETS 2 LBS. **33¢**

FRESH FULL PODDED GREEN PEAS LB. **29¢**