

Children's Development Enhanced During Dallas Summer School

The Dallas Elementary Summer School is now in its fifth week and will continue until Aug. 6. Instruction is from 9 a.m. until Noon, with a milk and cookie break at 10:25 a.m. The program is funded under Title I, E. S. E. A.

The program consists of classes in pre school, kindergarten, kindergarten, kindergarten, reading, mathematics, frosting art, frosting physical education and speech.

At the pre-school level, the child is worked with as an individual as well as part of a group. With the different developmental materials the child is able to function and learn at his own level. Intentions are to aid the children in becoming better thinkers, listeners, talkers and perceivers. Academically the child

is taken as far as he is able to go in preparation for future years. The necessity for children of this age to develop adequate peer relationships is recognized and the child has many opportunities to develop socially.

It is at the kindergarten level that a child's early experience should foster his development, socially, physically, emotionally, and intellectually. These are categories used in observing his development and are guideposts to obtaining a fuller understanding of his nature.

With a program centered around individual instruction, the objectives of the kindergarten are increasing the skills of the children in language and number skills. Individual aid is applied in learning the alphabet and letter

sounds. By means of group instruction the children achieve self confidence, the ability to work properly with others and the ability to carry out responsibilities with self control.

The reading program is intended to promote both comprehensive and word analysis skills. There are five reading teachers, each having an aide; each of the five reading groups are very small. The students receive much individualized instruction in conjunction with group activities. Each teacher selects reading material at the child's level which enriches his vocabulary and improves his reading skills.

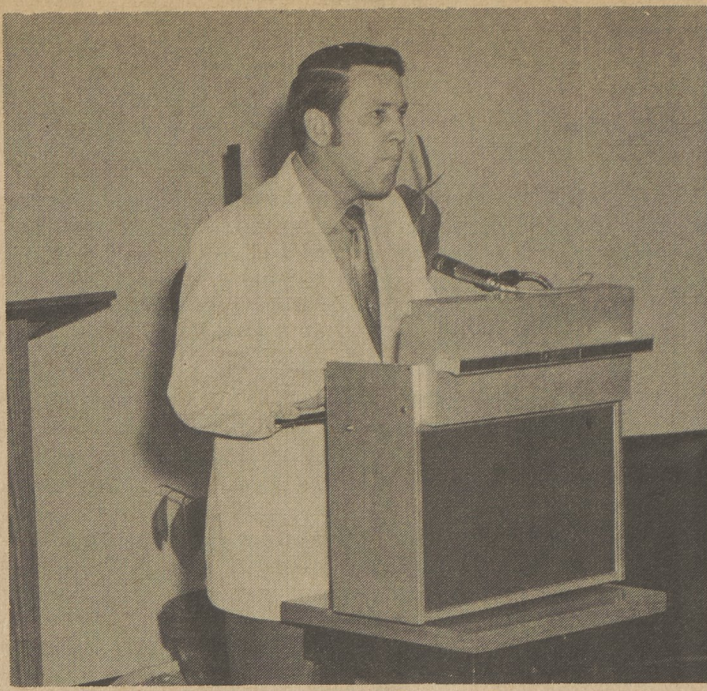
The mathematics program is conducted with the objective of helping the individual in the area or areas in which he is weak. The children were grouped according to a test administered at the beginning of the session which determined their weaknesses. Group instruction by the teacher is supplemented by individual help given by both the teacher and aides. At the end of the session a test will be given to measure what progress has been made.

The purpose of the Frosting art class is to provide the opportunity for children to express themselves artistically, while following planned motor sensory perception development therapy. The children work in various media that is beneficial to child development.

Under the direction of the teacher and an aide, students in the summer physical education program participate in such movement activities as basic skill drills, team sports, gymnastics and individual sports.

In addition to encouraging children to use their abilities productively, it is hoped the program will help remedy certain related reading problems accompanied by muscular coordination problems.

The speech program is designed to help those children with speech problems overcome their communication difficulties. It provides therapy to children aimed at improving their discrimination and articulation of sounds.



Louis F. Goeringer, general manager, reported this week that College Misericordia's Theatre 3 campaign is close to reaching its goal of 350 benefactors.

Theatre 3 Campaign Nears Goal of 350

College Misericordia's 1971 Theatre 3 campaign is just 76 benefactors away from the campaign goal of 350, it was announced by campaign general chairman Louis F. Goeringer. A total of 274 benefactors regis-

Haymarket Display To Include Paintings

The 12th annual Haymarket Outdoor Antiques and Art Show and Sale will be held Sept. 4 from 10 a.m. to 6 p.m.

Sponsored by Harmony Chapter, No. 58, Order of the Eastern Star, the show will be held in a large, cleared field at the foot of a picturesque mountain at Evans Falls, midway between Dallas and Tunkhannock, on Route 309.

More than 40 antique dealers from three states will participate in the show. A comprehensive display of antique items will be offered for sale.

The art show will consist of paintings displayed on the outside wall of an old, weathered barn.

Subscribe To The Post

tered to date was reported at the third progress report meeting of campaign team captains held recently in Wilkes-Barre.

"We have every expectation of reaching 100 percent of our goal by the campaign's end Aug. 11," Mr. Goeringer said. "Originally, the goal for this year's campaign was set at 300 but was raised to 350 during the kick-off meeting in June. We already have 91 percent of the original goal," he noted.

Mr. Goeringer also noted that this year's campaign was resulting in a higher percentage of new benefactors registering in addition to those renewing their memberships from previous years. He attributed the increase to the series of programs scheduled by Theatre 3 for the 1971-72 entertainment season: *The John Gary Show*, Oct. 5; *The Cincinnati Symphony Orchestra*, Nov. 4; and *The Young Americans*, Feb. 20. All three programs will be presented in the Irem Temple Auditorium in Wilkes-Barre.

A final campaign report will be issued Aug. 11. Subscription memberships will be available following the campaign by contacting Theatre 3's college coordinator, Robert J. Gower, at College Misericordia.

Rural Health Initiates Family Health Training

John Lusheski, president of the Rural Health Corporation of Luzerne County announced that the Corporation has initiated a Family Health Worker training program under the supervision of Karyn Kruse, social worker and Dorothy Case, R.N. Involved in the training are four Family Health Worker trainees: Eloise Montross, Noxen; Margaret Edwards, Harveys Lake; Mary Weir, Wyoming; and Walter Glowacki, Larksville. Mrs. Montross and Mrs. Edwards, were previously employed at the Harveys Lake-Noxen Center as clerical aides; Mr. Glowacki came to the Corporation as a New Careers trainee from the Concentrated Employment Program; Mrs. Weir has had previous experience as a social service volunteer and as a physician's receptionist.

The Family Health Worker training program was begun June 1, 1971, and is being conducted at the Harveys Lake-Noxen Health Center. The course involves a three month intensive training session followed by a nine month practical (on-the-job) training period. Emphasis in the early stages of the training program will be to develop out-reach and social service capability; afterward, health service roles, i.e., nurses aides, will be stressed.

Karyn Kruse, corporation social worker, is in charge of the social service component and Mrs. Case, is in charge of the health service component.

Upon completion of the training program, it is anticipated that the family health workers will function as a combination nurses' aides—social worker aides and will be under the supervision of a nurse or a social worker. The Family Health workers will be capable of performing the non-professional tasks which often-times have been performed by nurses and social workers. By utilizing the Family Health workers in this manner, nurses and social workers will be able to devote more time to performing the professional tasks for which they were trained.

In a rural community the trained Family Health worker will serve as a link between the rural family and the health services needed by that family. The Family Health worker will focus on the family unit rather than the individual members of the family, and will be aware of not only physical ills of family members, but also the family's social and environmental problems.

Trained Family Health workers will be encouraged to pursue additional training which will lead to a career in the medical or social service field. Proposed career ladders in the medical field include: licensed practical nursing, nursing, medical or X-ray technology, physical therapy, clerk-typist, secretary, medical secretary. In the social service field, proposed career ladders include: social caseworker aide, social

caseworker, associate degree in sociology, bachelor's degree in sociology. The corporation is working with Luzerne County Community College in the development of training and career opportunities for the Family Health worker.

The Rural Health Corporation of Luzerne County is training Family Health workers as a part of its efforts to expand the capacity to deliver comprehensive health services (medical, dental, social services) to low-income families residing in the rural areas of Luzerne County. The corporation is funded through the Commission on Economic Opportunity of Luzerne County by the Federal Office of Economic Opportunity, Office of Health Affairs. The main office of the corporation is located at 116-118 South Main St., Wilkes-Barre. Lester M. Saidman, M.D. is Medical Director for the corporation and Louis Coccodrilli is the corporation administrator.

No Hardship

Most small to medium-sized bottlers favor returnables and say it would not impose a hardship on the industry to switch-back to 100 percent returnables, and that prices would not rise as a result. Several beer company executives have said the same thing. It is the large companies which oppose the ban on throw-aways.

WVIA-TV Announces New Building Plans

Directors of WVIA-TV Channel 44 Wednesday night awarded a \$585,300 contract to a Scranton builder to construct a new public TV-radio communications center in Jenkins Township.

Meeting at the Scranton Inn in Scranton, the directors approved the low bid submitted by Magnotta & Son, Scranton. Other bidders were: Raymond R. Heinen & Co., \$608,118; Tabone & Barbera, \$614,000; Scandale Construction Co., \$615,000; Sordoni Construction Co., \$648,500; Joseph Banks Construction Co., \$649,600; and Gerard & Pettinato Construction Co., \$764,000.

Ground preparation and construction will begin next month. Occupancy is expected early next year, according to George H. Strimel Jr., station executive vice president and general manager, who added that the completion of the building will give the area one of the finest public communications centers in the country.

The site of the Channel 44 installation covers 6.46 acres just off Route 315 in Jenkins Township next to the Owens-Illinois plant. The 44 building committee and management termed the site very favorable and centralized for the 44 viewing area, which covers Lackawanna, Luzerne and 15 other area counties. As a public TV station, the new 44 facilities will be available to the community, school districts and business.

Planning of the one-story steel building will be handled through a local lending institution, gifts from the general community and other local sources. Local monies have been used for land purchase.

Building plans, drawn by Jerome McGlynn of the architectural firm of Lacy, Atherton & Davis, Wilkes-Barre, also include a meeting room for station volunteers and interested community groups, schools and business organizations.

building plans and other preliminaries.

Construction of the communications center will give the five-year-old Channel 44 a television operation under one roof. At present WVIA-TV operates from studios at Marywood College and general offices in the Robert Morris Grade School, Scranton. The station is owned and operated by the non-profit Northeastern Pa. Educational Television Association. J. Muir Crosby, Wilkes-Barre, is president.

The center will cover about 26,000 square feet with ample parking facilities. The building will contain a master control room for two TV studios, a radio control room and studio, a newsroom, general offices and facilities for program production, engineering, art, set design, printing, property and storage.

Building plans, drawn by Jerome McGlynn of the architectural firm of Lacy, Atherton & Davis, Wilkes-Barre, also include a meeting room for station volunteers and interested community groups, schools and business organizations.

saving plans for people on the way

5³/₄% SAVINGS CERTIFICATES
Two years, automatically renewable; amounts of \$1,000 or more.

5¹/₂% SAVINGS CERTIFICATES
One year, automatically renewable; amounts of \$1,000 or more.

5% SAVINGS CERTIFICATES
90 days, automatically renewable; amounts of \$1,000 or more.

5% SUPER SAVER PASSBOOK
Start with one dollar. Funds on deposit 90 days available 4 times a year.

4¹/₂% PASSBOOK SAVINGS
Make deposits and withdrawals at any time, in any amount.

All the above plans are compounded continuously from day of deposit to day of withdrawal.

United Penn Bank
The bank you can grow with
Member Federal Deposit Insurance Corporation

Boyd's

SPECIAL OF THE WEEK
WESTINGHOUSE



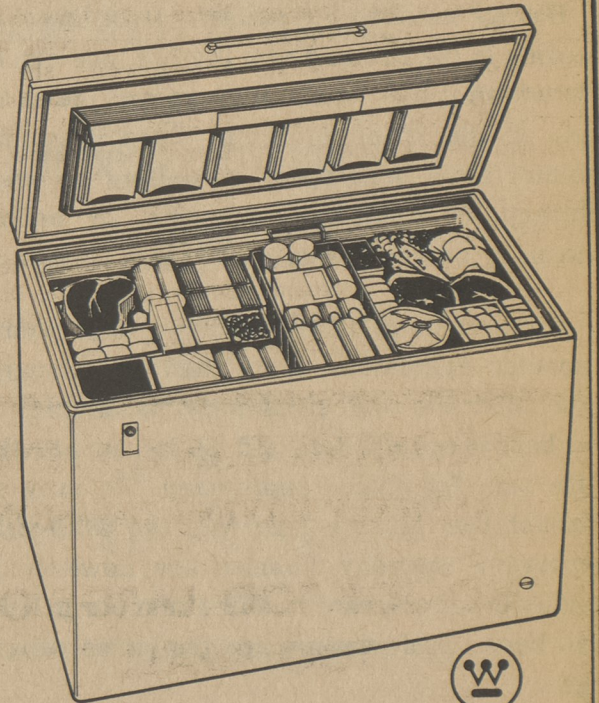
MODEL FU181L

\$269⁹⁵

WESTINGHOUSE CHEST FREEZER
MODEL FC151L

• 525 lb. capacity — 15.1 cu. ft. (AHAM) • Slim-wall insulation—store 1/3 more food without increasing floor space • Lift-out basket — keeps often-used packages handy • Plus: Recessed control knob, counterbalanced seal-tite lid, "dry-wall" construction, baked enamel-on-steel interior, Westinghouse built-in quality • Available in white only.

\$219⁹⁵



MODEL FC151L

BOYD'S ONE AND ONLY LOCATION
BOYD R. WHITE

Low Overhead, Small Profit Dealer

Appliances & Furniture

Wall to Wall Carpeting a Specialty

Union & Tener Sts., Luzerne, Pa. 288-8535

New in the neighborhood?

It's not all bad...



The Welcome Wagon hostess will help!

Mrs. Ives
Call today: 287-4467