

Sweet Valley fish salvage offsets contamination loss

Residents in land-locked northeastern Pennsylvania are not likely to think of themselves as being affected by mercury contamination in fish, but the fact is that the ramifications of such pollution extend even to the Back Mountain community.

A week ago Wednesday, the supervisor and assistant supervisor of Region III of Pennsylvania's fish commission worked with fish culturists at Harris Pond in Sweet Valley in a salvage operation which will ultimately provide fish for

ponds and lakes all over the State.

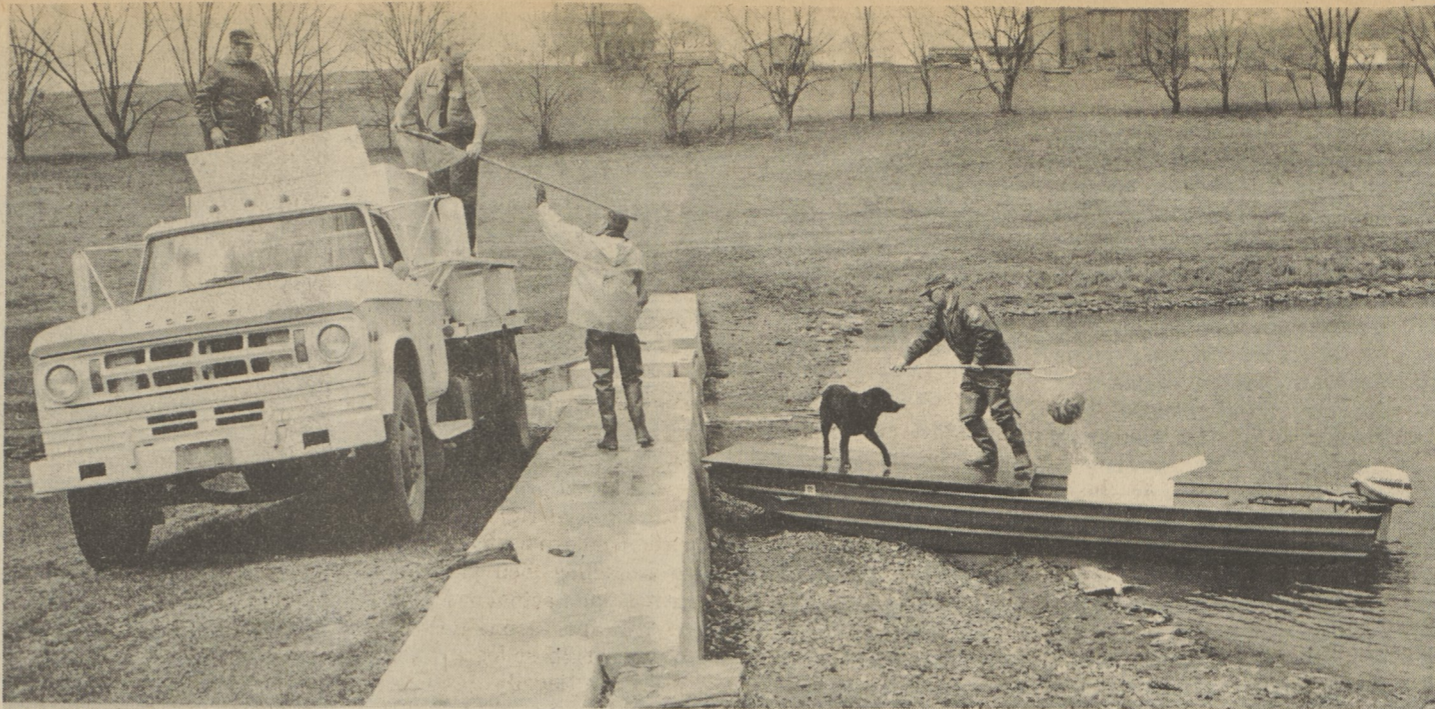
Clair Fleeger, fish commission supervisor, at Sweet Valley, explains that in the past, Pennsylvania obtained fresh water fish from Pymatuning Dam in Crawford County and Lake Erie. With the disclosure that mercury poison is endemic in the fish population of the Great Lakes, however, the State's fish commissioners decided it wise to discontinue purchasing the contaminated fish. The practice of "salvaging" fish from com-

mission-owned ponds was thus instituted.

To date this spring, Mr. Fleeger estimates that between 15,000 to 18,000 fish have been netted and taken from Harris Pond. More exact information will be available after hatchery experts have sized, counted, and segregated by species the fish which have been transferred to Pleasant Mount Fish Hatchery in Wayne County. From there, the fish will be re-distributed to community ponds throughout the State.

Incredibly, fish mortality has been extraordinarily low during these transfers. Supervisor Fleeger attributes this not only to careful handling but to low water temperatures (if fish are handled in warm water, the supervisor explains, the development of a lethal fungus on the fish's scales is almost assured). In the most recent haul last Wednesday, only two out of more than 2,500 fish—one golden shiner and one perch—failed to survive the transfer.

Because of these unique salvage operations, Harris Pond has been closed to fishermen—a fact the anglers are likely to rue when they learn that bass weighing over seven pounds have been taken from its waters. The consolation for this loss is that sportsmen in other communities will have a plentiful supply of fish which are not contaminated with the deadly mercury. At least, not yet.



The Dallas Post (ALEX REBAR)

Over 2,500 fish were transferred last Wednesday from Harris Pond in Sweet Valley to the Pleasant Mount Fish Hatchery in Wayne County. Pictured above as they empty net loads of fish into the fish commission's tanker truck are, from left to right, Walter Lazusky, assistant supervisor; Clair Fleeger, supervisor; Lawrence Davis and Walter Terry, fish culturists.

senior citizens invited to meet

All people in the Back Mountain area interested in forming a Senior Citizen's Group are invited to attend a meeting at St. Paul's Lutheran Church, Shavertown, May 3, at 1:30 p.m.

The proposed meeting is the result of an extensive survey conducted by the Back Mountain clergy and is in response to the interest indicated from members who filled in and returned the survey.

It is hoped that this meeting will initiate a regular program for senior citizens in the Back Mountain. There will be two short speeches, one by Sister Ann Paye, College Misericordia, describing a July workshop to be conducted at the college, and the second by Margaret Spencer from the Bureau of the Aging.

Coordinators of the Senior Citizen Program are the Rev. Douglas Akers, the Rev. Dr. Laurence Beers, and Intern Pastor Chris Dahlberg.

counselors will meet to elect new officers

The Luzerne County Counselors Association has announced its spring dinner will be held Friday at Gus Genetti's Towne and Country Room, Route 309, Hazleton. Nomination and election of officers will be held. Thomas Carr, guidance counselor of Dallas Area School District, is chairman of the nominating committee.

Charles Gallagher, member

of the staff at West Hazleton High School, is the present president of the association. Other officers are Gordon R. Schlier, Dallas Area, vice president; Grace Schell, West Hazleton High School, secretary; Sylvia Bator, Lake-Lehman High School, treasurer.

Guest speaker will be James Shaughesey, assistant superintendent of schools, Groton, Conn. His topic is "Guidance—A Challenge." Musical selections will be provided by West Hazleton High School Concert Choir directed by Miriam Howells, choral director of the high school.

Westmoreland PTA meets board candidates

Westmoreland Elementary PTA met Monday night in the school auditorium.

Mrs. Thomas Visigilio conducted the business meeting and presented the teachers with gifts of appreciation.

Harry Lefko, president of the school board, conducted the installation of officers for the 1971-1972 school year, which are Stanley McMinn, president; Mrs. Earl Gregory, vice president; Mrs. George Coolbaugh, secretary, and Georgiana Weidner, treasurer.

Grace Fries introduced the candidates for the school board who spoke briefly on their qualifications and reasons for candidacy.

Refreshments were served by fourth grade mothers under the direction of Roberta Carey.

-COMING SOON-

HOT PANTS!!

at
D'Amario's Fabrics

Dallas Shopping Center

Use
master charge

DALLAS 675-1605

TELEPHONE-TELEPHONE ON THE WALL YOU'RE THE HANDIEST ONE OF ALL!

A wall phone in the right place at the right time certainly is a blessing, as any housewife who has one can tell you. If you don't have a wall phone in your home now, call Commonwealth today and arrange for one in the color of your choice.



COMMONWEALTH TELEPHONE

WEIS markets

The Special One... WHERE EVERY ITEM IS PRICED RIGHT!

PRICES EFFECTIVE AT THESE 3 CONVENIENT WEIS MARKETS:

DALLAS <small>DALLAS VILLAGE R. 415 MEMORIAL HIGHWAY</small>	NANTICOKE <small>HANOVER MALL, SAN'S SOUCI PARKWAY DUNDEE</small>	EDWARDSVILLE <small>ROUTE 11 NEXT TO ARLANS</small>
--	---	---

Gov't Inspected . . . Roasting

CHICKENS	ROCK CORNISH TYPE 4 to 5-LB. AVG. LB. 39¢
PORK CHOPS	RIB END CHOPS LB. 39¢
	LOIN END CHOPS LB. 49¢
	CENTER CUT CHOPS LB. 88¢

PASCAL CELERY CRISP, FRESH Large Stalk **19¢**

ON-COR BEEF or TURKEY SLICES IN GRAVY . . . FROZEN 2-LB. PKG. **99¢**

SAVE \$1.71! WITH THESE COUPONS! YOU MAY REDEEM ONE OR ALL FIVE COUPONS WITH A SINGLE PURCHASE OF \$7.50 OR MORE, REDEEMABLE AT DALLAS, NANTICOKE OR EDWARDSVILLE WEIS MARKETS.

<p>WITH THIS COUPON SAVE 41¢</p> <p>ON ONE 1/2 GAL. BOTTLE OF FRESH CHILLED</p> <p>ORANGE JUICE</p> <p>WITH YOUR PURCHASE OF \$7.50 OR MORE LIMIT ONE COUPON PER FAMILY OFFER EXPIRES: MAY 5, 1971</p>	<p>WEIS QUALITY . . . FRESH</p> <p>ORANGE JUICE</p> <p>PRICE WITH COUPON 38¢</p> <p>CHILLED 1/2 GAL. BOT.</p>
<p>WITH THIS COUPON SAVE 81¢</p> <p>ON ONE 10-OZ. JAR OF INSTANT COFFEE</p> <p>MAXWELL HOUSE</p> <p>WITH YOUR PURCHASE OF \$7.50 OR MORE LIMIT ONE COUPON PER FAMILY OFFER EXPIRES: MAY 5, 1971</p>	<p>INSTANT COFFEE</p> <p>MAXWELL HOUSE</p> <p>PRICE WITH COUPON 88¢</p> <p>10-OZ. JAR</p>
<p>WITH THIS COUPON SAVE 27¢</p> <p>ON ONE 24-OZ. BOTTLE OF</p> <p>WESSON OIL</p> <p>WITH YOUR PURCHASE OF \$7.50 OR MORE LIMIT ONE COUPON PER FAMILY OFFER EXPIRES: MAY 5, 1971</p>	<p>FOR COOKING OR SALADS</p> <p>WESSON OIL</p> <p>PRICE WITH COUPON 38¢</p> <p>24-OZ. BOT.</p>
<p>WITH THIS COUPON SAVE 12¢</p> <p>ON ONE 3-POUND CAN OF</p> <p>CRISCO SHORTENING</p> <p>WITH YOUR PURCHASE OF \$7.50 OR MORE LIMIT ONE COUPON PER FAMILY OFFER EXPIRES: MAY 5, 1971</p>	<p>PURE VEGETABLE</p> <p>CRISCO SHORTENING</p> <p>PRICE WITH COUPON 77¢</p> <p>3-LB. CAN</p>
<p>WITH THIS COUPON SAVE 10¢</p> <p>ON ONE 4-ROLL PACK OF BATHROOM TISSUE</p> <p>WALDORF TISSUE</p> <p>WITH YOUR PURCHASE OF \$7.50 OR MORE LIMIT ONE COUPON PER FAMILY OFFER EXPIRES: MAY 5, 1971</p>	<p>BATHROOM TISSUE</p> <p>WALDORF</p> <p>PRICE WITH COUPON 28¢</p> <p>4-ROLL PACK</p>

DEL MONTE CREAM CORN

GOLDEN

5 17-OZ. CAN **\$1.**

DEL MONTE . . . FRUIT

COCKTAIL 4 17-OZ. CANS **\$1.**

CAMPBELL'S CREAM of MUSHROOM SOUP

10 1/2-OZ. CAN **15¢**

FRANCO-AMERICAN

SPAGHETTI 15 1/4-OZ. CAN **15¢**

SKIPPY CREAMY PEANUT BUTTER

LARGE 18-OZ. JAR **59¢**