



The Dallas Post (J. KOZEMCHAK SR.)

Dallas Rotary entertained over 300 children of the Back Mountain area at the club's annual Christmas party at Prince of Peace Church Saturday. Some of the children are shown surrounding Santa.

## some facts about enzyme products for homemakers

The word "enzyme" has become a familiar household word. But Lillian B. Jamgochian, Extension Home Economist, Luzerne County, says if you ask homemakers what an enzyme is, many say, "It's Greek to me."

That answer is correct. The word "Enzyme" is Greek in origin and means "in yeast." Enzymes are found in all living cells. They speed up chemical reactions. For example, enzymes control the digestion of food in the human body. They break down food materials into smaller forms so that the body can absorb nutrients into the system.

Enzymes in laundry products break down certain protein containing soils and stains into simpler forms so that they can be more easily removed by other detergent ingredients and washing action. Many stains, such as chocolate, meat juice, milk, eggs, and blood, stick to fabric fibers because proteins act as binding agents. In addition, proteins also bind body oils, which show up as soil on clothing. And enzymes provide a new way of breaking down such soils and stains.

There are several pros and cons about the effectiveness of enzyme laundry products. They are slow to act. The enzyme detergent products are relatively ineffective unless used as presoaks. They require from 30 minutes to 24 hours to be effective.

The latter is required for removal of yellow stains on white sheets and pillowcases. But during this prolonged presoaking the fabrics may develop very objectionable odors. Complete wash and drying cycles do not remove the odor. Sunshine and air drying will remove the odors. But as you know sun and air would have also removed the stain in the first place—without the enzyme.

There is no disinfectant or bacteria-removing property with enzyme products, except those with a mild sodium perborate added. Chlorine bleaching agents combined with enzymes interfere with enzyme activity and so does water hot enough to prevent germ or bacteria culture. Possible health hazards may prohibit enzyme use or make ineffective in coin-operated machines unless chlorine bleach is added after the presoak.

Enzyme pre-soak products are almost 75 percent phosphate-built, according to the latest report from the Department of the Interior. Since enzymes are relatively ineffective unless used in combination with detergents there is a doubling effect of the use of phosphates. Environmental concern about the phosphate problem may be a deterrent to the use of enzyme presoaks.

Textile researchers at The Pennsylvania State University

and well-known consumer research report that laundry treated with the commonly known presoaks or detergents in the same manner as required by the manufacturer of enzyme products will produce the same effect for one-half to one-fourth the cost.

Some concern over the danger of allergies or dermatitis associated with the enzyme products has been voiced. The Food and Drug Administration and the Federal Trade Commission are investigating the possible dangers at both factory worker and consumer levels. Regular detergents have long been known to cause some people to wheeze, cough, and sneeze. Other get dermatitis from contact with the products. Since enzymes themselves do not add to the trouble, the FDA doesn't think the dangers warrant hazard labeling for consumer laundry use.

However, if you are allergic to detergents, you will also need to take the same precautions with enzyme products. While enzyme laundry products represent an advancement in protein and starch-based soil removal, they are not always the most economical or complete laundry product we have hoped for. Consider the pros and cons of each laundry product before buying. Experiment with them but do not expect them to be the end to all your laundry problems.

## Ambulance Log

### HARVEYS LAKE

Dec. 16—Nickolas Novasel, Morgus Convalescent Home, to General Hospital. Crew: Arden Kocher, Chet Davis.

Dec. 17—Mrs. Charles Brinn, Loyalville, to General Hospital to Geisinger Medical Center, Danville. Crew: Chet Davis, Jim Faerber.

Dec. 24—Mrs. John Knisely, Sorber Mountain to General Hospital. Crew: Rich Williams, Jay Stenger, Chet Davis, Jim Faerber.

Dec. 25—Mrs. Sammuels, Carpenter Convalescent Home to General Hospital. Crew: Jay Stenger, Chet Davis, Jim Faerber.

Dec. 25—Mrs. C. Cadden, Pole 276, Harveys Lake, to General Hospital. Crew: Rich Williams, Chet Davis, John Stenger, Jay Stenger.

Frank O'Connell named to policy comm.

Rep. Frank J. O'Connell has been selected to serve as a member of the Republican Policy Committee for the 1971-72 session of the State House of Representatives. Rep. Matthew J. Ryan, committee chairman, announced recently.

Rep. O'Connell, who served on this committee during the last House session, commented that he was most pleased to have been re-appointed.

The function of the Republican Policy Committee is to determine the policy the Republican caucus of the House will follow on important issues which will come before this session of the legislature.

The Dallas Business Office of the COMMONWEALTH TELEPHONE CO. will be closed

from 12 noon, Thursday, Dec. 31 until 8 a.m., Monday, Jan. 4

Commonwealth Telephone Company

Check for new listing before calling The Dallas Post.

675-5211

DRS. I. & P. BERGER

Optometrists

Office Hours—By Appointment Only

WEDNESDAY MORNING  
MONDAY AND THURSDAY EVENINGS

27 Machell Ave., Dallas

675-5067

## THE NEW D'AMARIO USED TO BE PAM'S FABRICS

SALE ON Wools & Cottons

WIDE SELECTION!

STORE HOURS—  
MON.—9 til 9 p.m.  
TUES. WED. SAT.—9 til 6  
THURS. 9 til 9.

WOOLS—\$1.98 yd.  
COTTONS—99 cents yd.

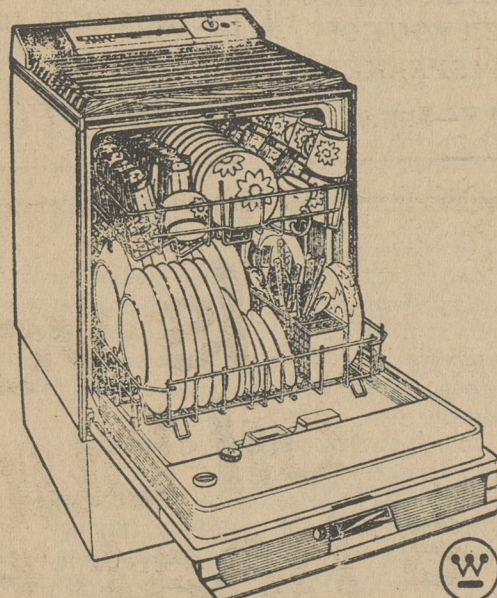
PHONE 675-1605

INTRODUCTORY  
**SALE!**

**NEW 1971  
Westinghouse  
Filter Clean  
Portable  
Dishwashers**

Now there's a better way to do the dishes

Compare: You'll buy Westinghouse



**\$258.00**

Westinghouse  
**Filter Clean**

Portable Dishwasher  
Model SFK6A

- 6 pushbutton cycle selections
- Westinghouse Sanitizer
- Self-cleaning filter
- White porcelain-on-steel tub, not plastic
- Exclusive Tilt-Guard Door
- Multi-level washing action
- Lighted Cycle-line dial
- Maple lift-off cutting board top
- Rinse wetting agent dispenser
- Concealed power cord and hose compartment
- Aerator and water release button
- Dual detergent dispensers
- Plate-warmer setting
- Silverware basket with covered compartment
- Telescoping top rack
- Concealed easy-roll casters

ALSO AVAILABLE

WESTINGHOUSE FILTER CLEAN FRONT LOADING PORTABLE DISHWASHER WITH SINGLE DIAL TIMER CONTROL MODEL SFK2D

**\$179.00**

BOYD'S ONE AND ONLY LOCATION

**BOYD R. WHITE**

Low Overhead, Small Profit Dealer

**Appliances & Furniture**

Wall to Wall Carpeting a Specialty

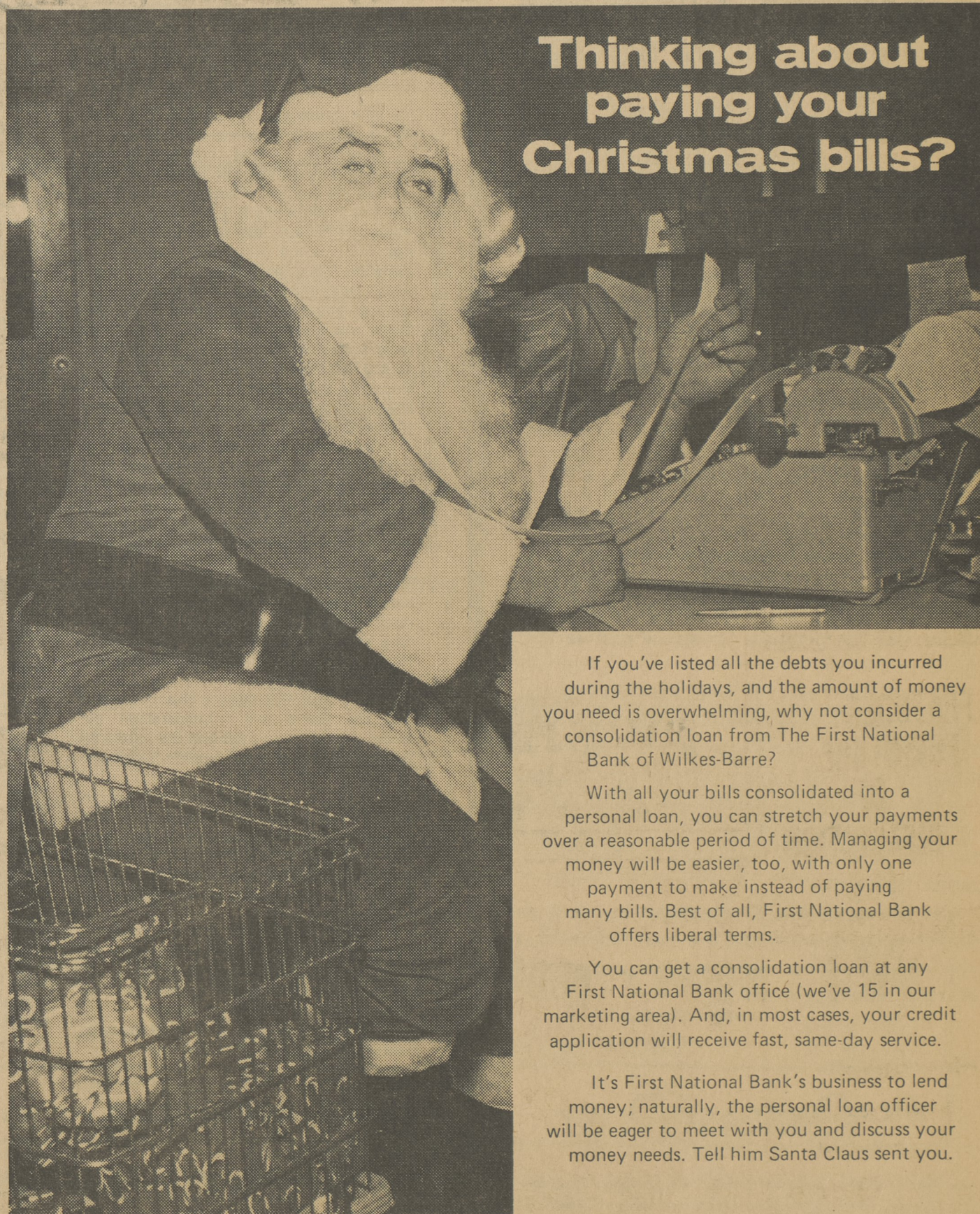
Union & Tener Sts., Luzerne, Pa. 288-8535

**BEST WISHES**

for a  
**HEALTHFUL and PROSPEROUS  
NEW YEAR**



## Thinking about paying your Christmas bills?



If you've listed all the debts you incurred during the holidays, and the amount of money you need is overwhelming, why not consider a consolidation loan from The First National Bank of Wilkes-Barre?

With all your bills consolidated into a personal loan, you can stretch your payments over a reasonable period of time. Managing your money will be easier, too, with only one payment to make instead of paying many bills. Best of all, First National Bank offers liberal terms.

You can get a consolidation loan at any First National Bank office (we've 15 in our marketing area). And, in most cases, your credit application will receive fast, same-day service.

It's First National Bank's business to lend money; naturally, the personal loan officer will be eager to meet with you and discuss your money needs. Tell him Santa Claus sent you.

**THE First National Bank**  
OF WILKES-BARRE

OFFICES -  
WILKES-BARRE: 11 West Market Street, 59 Public Square, 408 Kipper Street  
KINGSTON • DALLAS • WYOMING • HANOVER TOWNSHIP • NANTICOKE • PLAINS  
MOUNTAINTOP • WHITE HAVEN • CONYNGHAM • DRUMS • BLOOMSBURG

**REAL ESTATE**

**SALESMAN  
SALESWOMAN**

**WANTED FOR  
YOUR AREA!**

**IDEAL  
OPPORTUNITY  
FOR LIVE WIRE**

**We  
Train  
You!**

Write or Phone

**Fitelson  
Real Estate**

ROUTE 309  
MOUNTAINTOP  
474-6797 or 823-2184