

continued from PAGE 1

did not believe this would be a major consideration in the development of the Newberry estate because the high cost of the apartments would tend to exclude younger families. He hastened to add that there was no formal policy to exclude families with children, but that it would simply be difficult for most families with young children to afford the luxury dwellings.

Dr. Robert A. Mellman, superintendent of Dallas Schools, admitted that he had "no way of knowing at this time" whether or not there would be a large increase in the number of school children as a result of the new apartments.

He noted that at the present time school records reflect an average of three school age children in each family moving to the Back Mountain community. "Currently there are 75 to 100 new homes under construction in the Dallas area at all time," the superintendent said, "and certainly anything in addition to this would change the prediction factors we use in formulating school population figures."

Dr. Mellman added that "new homes or apartments must be actually under development before the state permits us to include them in our studies, however."

**TAX PROCEDURES**

continued from PAGE 1

people submit their federal returns but this is purely voluntary, they pointed out.

Questioned about people who do not pay, Mr. Goguts said they are making every attempt to locate delinquents who, he added, are liable for six years. There is a six percent penalty applied after April 15 of each year and one half percent applicable for each month thereafter. This means that tax not paid in 1968 is now due with 12 percent interest and that from 1967 the interest due would be 18 percent. The company is empowered to make wage attachments for these amounts or to prosecute. There are presently 25 to 30 cases outstanding before local justices of the peace, the officials said.

School board solicitor Jonathan Valentine pointed out that individuals could and should pass information on to the school board about any delinquents or unreported sources of income.

Mr. Goguts said that the earned income tax is due on all wages, salaries, commissions, net profits and remunerations for services rendered. There are no exonerations allowed and no age limits, he concluded.

**WHITESSELL**

continued from PAGE 1

area will be completely landscaped with a minimum of six acres devoted to playground area. There are plans for a central water system and central sewage.

The first area to be developed is in the southern section which lies in Dallas Township. The remainder of the site is partially in Franklin Township. Plans have been submitted to Dallas Township for a zoning variance to build the mobile park and a few stores to serve the community. There will be a hearing before the Dallas Township Planning Commission Feb. 16 in the Dallas Township Municipal Building.



Dump trucks stand empty at the end of a working day on the excavation site of the new Acme on Church Street, Dallas.

**West team wins Catholic all star game**

The West won the All Star game of the Wyoming Valley Catholic Eighth Grade League Sunday. The final score was West 58, East 44.

Eddie Onzik was top scorer with 15 points. Eddie, Kevin Popson and Tom Shea represented the Gate of Heaven on the West team. Other teams which had boys on the West team were Wyoming Catholic, Sacred Heart and Wyoming Seminary. Pete Kozachok of Gate of Heaven was coach. All 12 members players saw action.

Boys representing St. John, Evangelist; St. John, Baptist; Holy Rosary; Mt. Carmel and Pittston Catholic made up the East team. The coach was Mike Milcannon of St. John, Baptist.

**fly tying course held at Penn State**

A 10 week course in fly tying and fly casting is being offered at the Penn State School of Continuing Education, Hayfield House, Lehman.

The course will be held from 7 to 9 p.m. Thursdays beginning Feb. 26 and ending April 30.

**Bowling News**

Disque's Funeral and Henry's Jewelry have tied up top place of the Neighborhood League after last week's competition when Henry copped 3 points from Fino's and Disque split with Brothers 4. Dave Eddy set the pace for Disque's with 223, 593.

Hasay Motors won 3 from Cappy's Carpet and hold down the next spot with 7 points while Roth's Novelty with 4 from Dallas Finance has 6 total points.

Winning top scoring honors was C. Kazokas of Roth's with 239, 607. Smyth of Hurst's had 222, 563.

West Side Novelty leads the Crown Major league with 13 points and Wesley Gulf is next with 11. Dallas Shopping and Automatic Cigarette are tied with 10 each.

Leo Yankoski paced West Side's 4 point victory over Birth's with 575 pins.

Chepulis topped all scoring with 219-216, 609. Ted Heness posted 226, 591; Fred P. had 230, 594 and Mike

Gorey chalked up 219, 598. Harold Kocher Sr. piled up 209, 593.

The George Shupp league's top scorer last week was Price of Ranch Wagon with 230-235-212, 677 as he paced his team to a 4 point victory over Cappy's Carpet. Haefel led Cappy's with 201-255, 646.

Wendell led Freeman's Store to a 3 point win from Daring's Market with 205-232, 628. Daring's and Cappy's teams still head the league with 10 points each.

Al Ciccarelli took honors for Mike's Electric with 211-226, 622 and Zimmerman led Bill's Cafe with 231, 566 as the teams split 2-2. Romanoski piled up 233-203, 619 and Youngblood chalked up

203-201, 599 for Natona Mills and the team copped all 4 from Woodland Inn. Moore led the Inn with 202-226, 612.

Hoppy's Cafe is now in the driver's seat of the Industrial league with 12 points. Desher's team is second with 11. Hoppy's did the trick with 4 points from Broody Tires last week while the Deshers were taking all 4 from Harveys Lake Rebels.

All Stars copped 4 from Parker Fuel and McCreary Tires won 3 from Boston's Texaco. Boston's Bill was top scorer with 211, 563.

Stegmaier Lads took over the leading place in the lineup last Thursday when they won 3 points from Stegmaier Lassies.

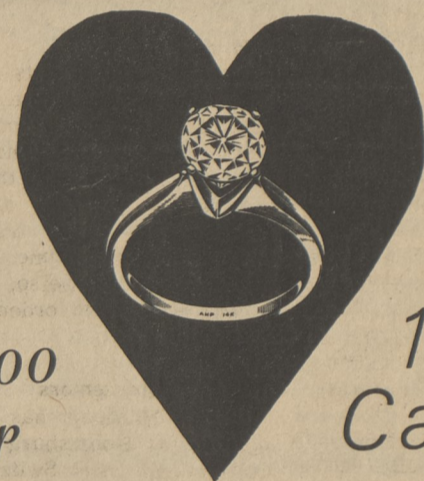
Stegmaier Lassies, Bill's

Girls, Kocher's Boys, Kochers Girls and Kocher's Market have 5 points each.

Libby Cyphers won individual honors Thursday night when she posted 177-172, 497 for Trucksville Pharmacy and led her team to a split with Monk Plumbing. Duke Isaacs is in first place with 10 points after taking 3 from Tom Reese's team which is second with 9.

Nancy Love turned in a 179 single game and Ann Corbett hit 180. Toots Langdon chalked up a 165.

**VALENTINE SPECIAL**



\$100 up

1/3 Carat

**HENRY'S JEWELRY**  
Cards and Gifts

Memorial Highway

Shavertown

**REUPHOLSTERY**  
M. B. Bedding completely rebuilds your furniture then recover it in your choice of lovely fabrics  
Special Care To Antiques  
Over 50 Years Dependable Service  
**M. B. BEDDING CO.**  
526 So. Main St., Wilkes-Barre — 822-2491

**Mr. Joseph Shimkus**  
Hair Stylist  
28 Lake St., Dallas  
For Appointment Call 675-0494

**GREENWALD'S IN LUZERNE**  
ONE STOP SHOPPING CENTER  
FURNITURE • GIFTS • HOUSEWARE  
OPEN FRIDAY NIGHTS

**CROWDS . . CROWDS . . CROWDS**  
FOR "THE MOLLY MAGUIRES"  
**PARAMOUNT THEATRE WILKES-BARRE**  
3rd BIG WEEK!  
**RICHARD HARRIS SEAN CONNERY SAMANTHA EGGAR**  
**THE MOLLY MAGUIRES**  
A MARTIN RITT PRODUCTION  
FRANK FINLAY WRITTEN BY WALTER BERNSTEIN PRODUCED BY MARTIN RITT AND WALTER BERNSTEIN DIRECTED BY MARTIN RITT  
MUSIC SCORED BY BEERY MANCINI PARAVISION "TIZENKILLER" A TRAM PRODUCTION A PARAMOUNT PICTURE

FROM Whiskey  
**HOB NAIL**  
COLOGNE SOAP BUBBLE BATH  
Lily of the Valley Moss Blue Gold Fire fragrances also Chanel No. 5  
Give your valentine...  
**Russell Stover CANDIES**  
\$1.00 up  
American Greeting Cards Valentines for Everyone  
**HALL'S PHARMACY**  
SHAVERTOWN, PA.  
Emergency Telephone 675-1681 Roy Elliott, R.Ph.

**Spring blossoms out at The Globe**  
See the newest, prettiest, **Spring Fashions**  
Coats Dresses Costumes Sportswear Hats  
**SALE PANTY-HOSE**  
\$1.50 value **\$1.** all sizes  
COUPON GLOBE STORE WORTH One To A Customer  
EXTRA **100** EXTRA  
S&H STAMPS In Addition To Regular Stamps  
On Cash Purchase Over \$5.50 And On...  
GOOD THROUGH WEDNESDAY, FEB. 18 THROUGHOUT STORE  
CERTAIN SALE ITEMS EXCEPTED  
Layaway or charge it with Master Charge or Uni-card  
**Globe IN LUZERNE**  
112-116 Main Luzerne  
Shop Thursday and Friday Nights 'til 8:45  
Uni-card master charge THE OVERSEAS CARD