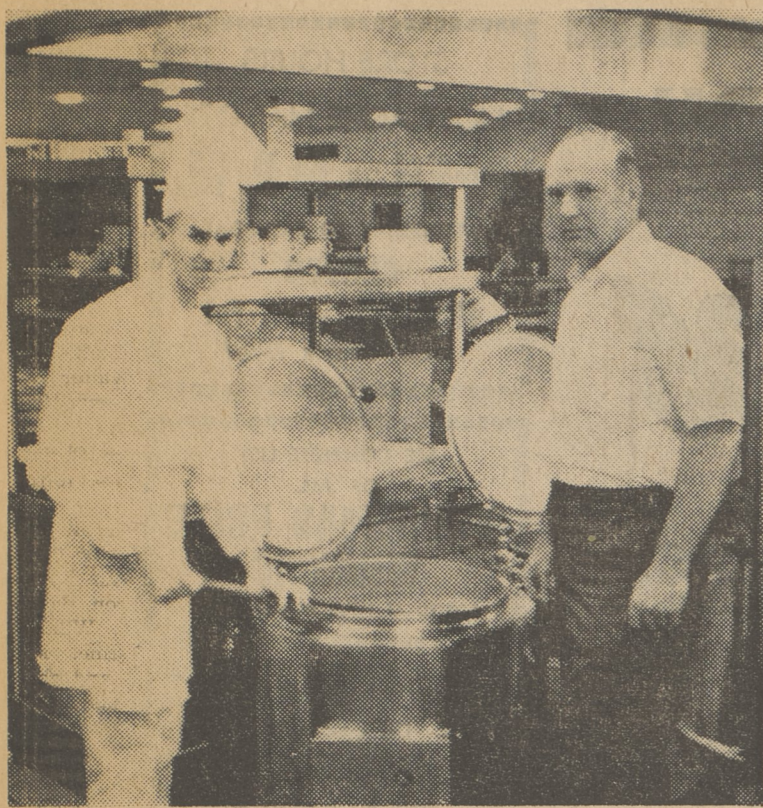


Exchanges Cap For Tall Chef's Hat



Thomas Myers, a Dallas Senior High School 1967 graduate, was back in business in the school cafeteria last week, but this time in a tall chef's hat. He is a student at the School of Culinary Arts in New Haven, Conn., home now at Elmcrest on vacation. Last Wednesday he gave a demonstration on kitchen equipment to students taking the Food Service

course at Dallas. During his student years he pursued this vocational course, working in the cafeteria. He has now exchanged the white overalls cap required in the cafeteria for the tall white hat worn by chefs throughout the civilized world. His ambition is a restaurant of his own.

The Herbert S. Horns Celebrate 50th Wedding Date On Dec. 22

Last week the Post carried a story on the Morris Kings 50 anniversary. There were not the only member of the family to reach such an auspicious occasion for Mr. Kings sister, Mrs. Augusta King Horn and her husband, Herbert of Pawling, N.Y., celebrated an identical wedding date on December 22. Mrs. Horn is quite well known as a local lecturer and like her husband is a former teacher.

Mr. Horn is a well known contractor, carpenter and cabinet maker and carries out his business endeavors in Penna., New York and Conn. The couple are natives of Northmont, Pa., and are the parents of four children, Blanche Horn Nelson, Inez Horn Tristram, Herbert Horn, Jr., and Marion Horn Dudy. There are also 13 grandchildren.

A Review Of Four Years' Service

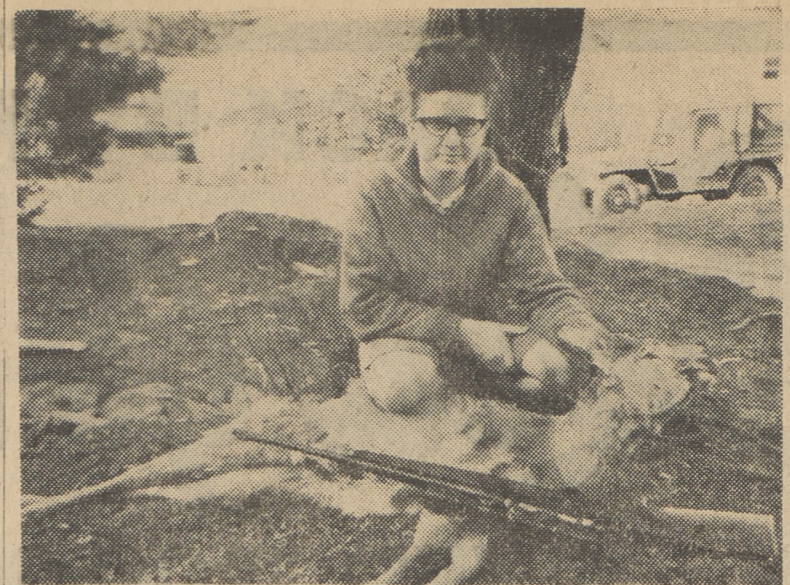
by Jim Post
1. TOTAL EMPLOYMENT: Four years ago this area was labeled by Federal government as a 'Pocket of Poverty.' Our main objective, when first being elected to office, was to do the necessary things to correct this situation. First, we embarked on an ambitious \$2,000,000.00 modernization program in the county seat (the courthouse). All this work, to our knowledge, has been done with craftsmen and laborers who are members of the various recognized local organized labor groups. We completed the long overdue tax equalization (re-assessment program). This, for the most part, was designed to more equally divide the tax burden and rid the county of favoritism and curbstone assessment on people's property and industry. Thus ending the fear that new industrial plants would be taken advantage of and over taxed. We have provided, through our county road and bridge department, access roads into industrial sites in all sections of Luzerne County. We have restored the faith and confidence of industry and labor into this a now progressive and aggressive area.

activity, lack of community respect, and politically dominated. Today there is a waiting list of admissions for the people who are unable to care for themselves to the point where we now have plans for the construction of an additional wing. Our Day Care Centers are increasing in activity for those people who need rehabilitating due to the suffering of heart or stroke illnesses. Our Home Maker Service and Child Welfare Services are regarded by the state government as some of the finest in the entire Commonwealth. Our most recent and proudest accomplishment is that Luzerne County has moved into a position of first, in the establishment and development in Pennsylvania of our Mental Health and Retardation Center. Obviously these services are provided without consideration of party politics.

2. EDUCATIONAL OPPORTUNITIES: So that our people, regardless of their station in the community, now have equal opportunity to attain higher education, we evaluated the county's history regarding educational problems. Briefly, the county's entire participation in the field of education amounted to a contribution of \$12,756.00 to the County Superintendent of Schools Office—this was our budget in 1964. Four years later, we have improved facilities at the County Superintendent of Schools Office. Provided the county's share toward close circuit educational television to all schools—public, private, and parochial plus the new two year Community College. Our contribution to education this year (1967) amounts to \$412,981.00. We are sure that the greatest recipients of these educational opportunities will be those who desire or require specialized training.

3. HEALTH AND WELFARE: This is our least publicized and yet most proud field of accomplishment. Four years ago our Valley Crest, home for the aged, was plagued with in-

Woman Hunter Adds Her Laurels To Family Record



MRS. HENRY STUART AND PRIZE

Two brothers, Henry Stuart, 5 or near Dallas Senior High School, Sunset Avenue, Shavertown, and Walter Stuart, 234 Elm Terrace, Trucksville were among the successful nimrods this season. Henry brought down a five point buck on December 2 in Fernbrook and the same day his younger brother Walter bagged a four point

they have facilities to exercise, relax, and participate in family activities in areas within their financial means. We have recently opened one park and we are surveying additional facilities strategically located throughout the county. The subjects covered do not include all the accomplishments of the last four years—they merely highlight some of the activities for which we have been responsible. My goals were to continue provided. (Continued on 6 A)

Winter Fishing Season Confined Mainly To Open Water, No Ice

Pennsylvania's winter fishing season, which opened December 1, to date has been confined mainly to open water because moderate weather and rains throughout the state have eroded no ice or poor, unsafe ice coverings in northern tier counties. Fishermen are reminded that winter trout fishing is legal through the ice or in open water only in lakes over 10 acres. The season will close at midnight, February 15, 1968.

inches; daily limit - 3. Pickerel - minimum size - 16 inches; daily limit - 3. Muskellunge - minimum size 30 inches; daily limit - 2. Northern Pike - minimum size - 24 inches; daily limit - 2. Sunfish (all species including bluegills), Yellow Perch, Crappies, Rock Bass, Catfish, Suckers, Bels - no minimum size; daily limit - 50 each or 50 combined. Bait fish and fish bait - no minimum size; daily limit - 50 each or 50 combined.

Fishing through the ice or in open water for warm water species, including pickerel, northern pike, muskellunge, bass, walleye and panfish will be permitted until midnight, March 14, 1968.

For the convenience of out-of-state fishermen over weekends when license issuing agents are usually closed, nonresident licenses are available from county fish wardens, and at regional offices with addresses shown below:

Following are the size and creel limits for the 1967-68 winter fishing season:
All species of trout and salmon - minimum size - 6 inches; daily limit - 3 (combined species). Bass (largemouth and smallmouth) - minimum size - 9 inches; daily limit - 3 (combined species). Walleye - minimum size - 15

Northwest Regional Office
Tionesta, Pennsylvania - 16353
Southwest Regional Office
RD 2,
Somerset, Pennsylvania - 15501
Northwest Regional Office
Bo 88
Sweet Valley, Pa. - 18656

State Constitutional Convention Faces A Challenge In Up-Dating

Pennsylvania's Constitutional Convention has the challenge to write an "indelible and visionary blueprint . . . harnessing and transforming the dynamic power of the state's faith in its future into the reality of law.

limit of one million dollars as one of the key issues Convention delegates will have to tackle in their discussions of taxation and state finances

Paying tribute to the executive branch of government as part of "Executive Day," delegates to the convention heard State Attorney General William C. Sennett call for a "matrix of open minds and broad visions to achieve the goals" so vital to Pennsylvania's future.

"While a 'pay-as-you-go' philosophy may be sensible in handling current expenditures, long-term borrowing to finance the state's urgent needs for capital improvements, such as highways, schools and parks, has come to be accepted as a practical necessity," Kurtzman said, speaking as the convention's task force director on the subject of taxation and state finances.

"Each of you now serves to rebuild the rule of law in this state," Sennett declared as the spokesman for the honored group of Cabinet officials and other members of the state's executive branch. "Your best yardstick is your conscience. Your best tool—an open mind. On the success of your work hangs the destiny of Pennsylvania."

Kurtzman called the constitutional limit the most restrictive subject under state finance. "While the financing of capital improvements through the use of the 'authority' system has helped bypass the delay and uncertainty encountered in the constitutional prohibitions against borrowing, it has been subject to several drawbacks," he explained. "For one, the cost of borrowing in the past has been higher when authority financing has been used, but while this difference is difficult to measure precisely, there is evidence the gap has been narrowing as investors have become more familiar with it."

Dr. David H. Kurtzman, State Superintendent of Public Instruction, cited the constitutional debt

"A million dollars might have given some leeway to the Legislature and the governor in 1873 when the annual budget was less than \$7 million, but it has lost its flexibility for today's annual budget of 625 billion."

THE DALLAS POST is proud of its PUBLICATIONS Ask To See Some!



a Dog's Life
DOG'S AGE COMPARED TO MAN'S
By Bob Bartos, Manager Friskies Pet Foods Research Center
Figuring Fido's age in terms of human years has always been considered a mere matter of multiplying his years by seven. According to this formula, if your pet is two years old, he's the equivalent of a fourteen-year old human. Yet he's expected to act considerably more mature than a teenager. Recently scientists have come up with a much more realistic ratio. With the new formula, the year-old dog corresponds in development to a 16-year old human. From there the gap begins to narrow. It's 2 years against 24, 3 years against 35. After that each human year is equivalent to 5 dog years.



While this formula gets your dog into his fifties faster than the old one, it slows his aging down when he reaches the crucial sixties. The 12-year old, for example, will be a spry 75 instead of a tottering 84. It's not only a new formula, however, that's knocking years off your dog's life. Improved veterinary care is the chief factor. Many common canine diseases that formerly were fatal can now be prevented by vaccination. Owners, too, can claim their fair share of responsibility for the longer lives of their pets. They're giving them better care and feeding them prepared dog foods scientifically formulated to meet the dog's every nutritional need. They're also controlling them better, which means that fewer are losing their lives to autos. Feeding tip: The best way to be sure your puppy develops good sound bones is to feed him a prepared food such as Friskies Puppy Food which is especially formulated for his every growing requirement.

HAPPY NEW YEAR
Here's to you and yours in the year ahead, with many thanks from us.
ELSTON and GOULD TIRE SERVICE
MEMORIAL HIGHWAY, DALLAS

SPECIAL Guaranteed Electric Heating Pad \$3.99
EVANS DRUG STORE
SHAVERTOWN

Special Notice—
NOTICE: The organization meeting of the council of the Borough of Harveys Lake, Luzerne County, Pennsylvania, will be held at the Daniel C. Roberts Fire Company Building, on Tuesday, January 2, 1968, at 7:30 P.M., EST. The first regular meeting of the Fiscal Year 1968 will be held immediately following the organization meeting.
John H. Stenger Secretary

GREENWALD'S IN LUZERNE ONE-STOP SHOPPING CENTER
FURNITURE • GIFTS • HOUSEWARE
OPEN FRIDAY NIGHTS

New Year GREETINGS

Between this scene of a coach and four arriving at a country inn and the marvels of the space age, there are many contrasts. As we greet our friends at the New Year, we would wish for today's world the best of both times—wholehearted acceptance of new challenges, with continued appreciation for the "old-fashioned" ways of warm cordiality. We greatly value the generous share of such cordiality we enjoy in our pleasant association with our customers, and it is a constant support to us in our endeavors. Happy New Year!

LUZERNE ELECTRIC
Division of the UGI
"Helping Build A Better Wyoming Valley"