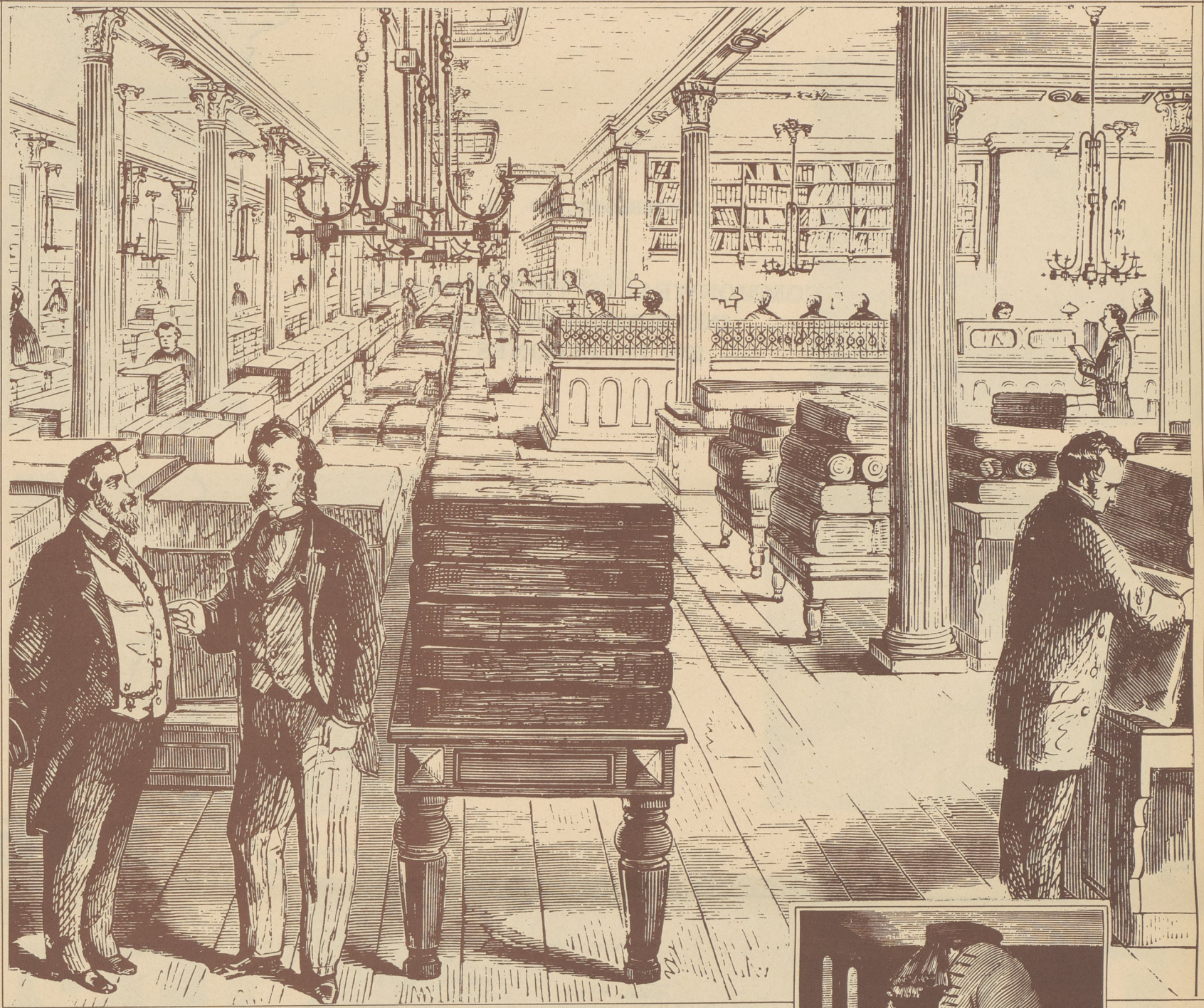
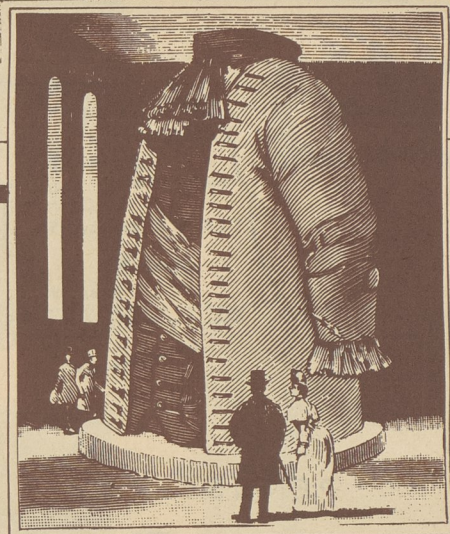


*Cloathe is the Clewe to the Suite*



## THE GREAT SUIT



### NOW AND ALWAYS...AT THE HUB

In truth, dear reader, the soul of tailoring is in warp and woof. A nice hand with the needle, though, does help. For proof of the sartorial elegance here purveyed, the Proprietor invites your inspection of his goods. Our recommended version (illustrated) is vested, natural of shoulder, big of plaid. Fit up in the shade you find preferable.

*Hearty Greetings to All Ye*

*Olde Back Mountain Sesquicentennialaires!*

1817 - 1967

*The Hub*  
of WILKES-BARRE