

Township Candidate



Roland "Tootie" Spencer is seeking office of Supervisor from the middle district of Dallas Township. A resident of Dallas Township all his life, Mr. Spencer is presently employed with the state highway

department. He has had ten years of experience with highway work, both in maintenance and construction.

Tootie is the son of Mrs. Raymond Spencer and the late Raymond Spencer of Dallas Township, and has lived all his life in the township. He served in the navy in World War II and is a member of American Legion Post 672, Dallas, where he is now sergeant-at-arms. He is a member of Kunkle Fire Department and has served as its president for five years. He is also a member of Idetown Fire Department.

If elected, Mr. Spencer promises to work for the welfare of the community and the taxpayers of the township.

Leaves For Hospital

John Smith, son of Mr. and Mrs. Frank Smith, Orange, left Monday night for Valley Forge Hospital, Phoenixville, Pa., for an indefinite period. His mother accompanied him.

Sales Slip Pads
In Many Designs
The Dallas Post

DRIVING EQUIPMENT

It's time for a summer inventory of driving equipment.

By driving equipment, is meant not only the safety features of the car but the safety qualifications of the driver himself.

This is going to be a busy summer on the highway — probably the busiest in history — and the roads will be unsafe for mechanically unfit cars and physically deficient drivers.

The wise motorist usually looks to his mechanical equipment, but often overlooks his own physical qualifications, such as sight and hearing. He is likely, also, to drive when the state of his general health is below par, thus materially reducing efficiency as an operator.

Make both a mechanical and physical check-up before entering this busy period of motoring. Good vision for one thing is of paramount importance, particularly in night driving. Safety engineers have long held the opinion that many accidents explained on other grounds actually are due to impaired sight.

Fishing Season For Pickerel And Bass Opened Saturday

The fishing season for muskellunge, northern pike, walleye and pickerel opened Saturday. The season for these species will continue until midnight, March 14, 1966.

The range of the muskellunge, which must be a minimum of 30 inches in length to be legal, has been extended. In addition to most waters in Crawford and Erie Counties legal-size muskies now can be caught in the following waters: Luzerne County, Lake Jean; Bedford County, Gordon Lake; Bradford, North Branch of the Susquehanna; Centre, Bald Eagle Creek and Moshannon Lake; Chester, Brandywine Creek; Clinton, Bald Eagle Creek and Dam.

The range of the northern pike, originally confined to the northwestern counties of the state, also

has been extended by fish management work of Commission personnel. Growth of this excellent game fish has been quite phenomenal. A minimum of 20 inches is required in inland waters.

The walleye, considered by many to be the finest eating of all fresh water game fish, may be taken in the large rivers of the state such as the Allegheny, Delaware, Susquehanna and Juniata. It is found in the large lakes and reservoirs such as Pymatuning, Conneaut and Wallenpaupack. In addition this fine fish also is taken from many smaller lakes and streams throughout the Commonwealth. Minimum legal length of the walleye is 15 inches.

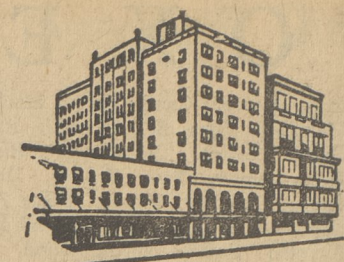
Pickerel are confined almost entirely to waters of Northeastern Pennsylvania. While they seem to

Kunkle Chicken Dinner

Russell Transue and Fred Dodson are chairmen of a family style chicken dinner to be served by Kunkle Fire Company at the Community Hall Wednesday, May 19, from 5 to 8 p.m. Reservations may be made with any member of the fire company.

prefer the shallow waters with an abundant vegetation growth on mud bottoms they also are found in some cold, deep ponds where there is an abundance of forage fish and little vegetation present. Minimum legal length of pickerel also is 15 inches.

The daily creel limit of walleye, northern pike and pickerel is six, with two walleye being the limit when the fish are caught through the ice. The muskellunge creel limit is two per day.



HOTEL JEFFERSON
ATLANTIC CITY
NEW JERSEY

Central location overlooking Boardwalk and convenient to Piers, Churches and Theatres — Near Rail and Bus Terminals — Inviting Lobbies and Parlors — Closed and Open Sun Decks A-top — All Rooms Delightfully Furnished — Modified and European Plans — Conducted by Hospitable Ownership Management that delights in catering to the wishes of American Families. Write for Literature and Rates

Hotel Jefferson
Atlantic City, New Jersey

AUCTION

Benefit of Nicholson Methodist Church
SATURDAY, MAY 15, 1965
(RAIN OR SHINE) 10:00 A.M.

At Fire Company Grounds, Nicholson, Pa.

The following items will be offered for sale at the Auction:

Brass bed, wash stands, plank bottom chairs, Boston rocker, school desks, coffee mill, iron kettles, ironstone china, custard glass, milk glass, carnival glass, pressed glass, china, pitcher and bowl sets, vinegar cruets, colored jars and flasks, goblets, cups and saucers, books, wicker furniture, marble top table, stools, chairs. Other antique and modern items too numerous to mention.

Refreshments available on grounds.

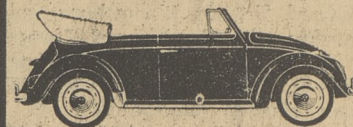
Bake Sale and Candy Sale

Co-chairmen: Roy Price and Clyde Rome

The Dallas Post
Uses The famous
ATP Chief
Offset Presses

VOLKS WAGEN

New & Used Cars and Trucks
All Years and Models
FULLY GUARANTEED



SALES PARTS SERVICE

GOODWIN AUTO CO.

651 Wyoming Ave.
Kingston, Pa.
Corner Rt. 11 & 309
Call Coll. 288-6426

get this custom service for SHIRTS!

- * Starched the way you prefer, or not at all.
- * Professionally pressed on special equipment
- * Buttons replaced free.

FREE PICK-UP AND DELIVERY
288-1496 Enterprise 1-0843
MAIN PLANT and NARROWS SHOPPING CENTER BRANCH STORE
O'Malia's
Laundry & Dry Cleaning
Luzerne-Dallas Highway

First National Bank's
new low rate can
CUT THE COST OF YOUR NEW CAR

BIGGER SAVINGS! SMALLER MONTHLY PAYMENTS!			
	AMOUNT FINANCED	MONTHLY PAYMENT	TOTAL LOAN
24 months to pay	1500.00	68.13	1635.00
	2000.00	90.84	2180.00
	2500.00	113.55	2725.00
	3000.00	136.25	3270.00
36 months to pay	1500.00	47.30	1702.50
	2000.00	63.06	2270.00
	2500.00	78.82	2837.50
	3000.00	94.59	3405.00

THE **FIRST NATIONAL BANK**
OF WILKES-BARRE, PA.
Wilkes-Barre Plains Hanover Township
Kingston Mountaintop White Haven

DANIEL M. SHAVER
REPUBLICAN CANDIDATE FOR
Kingston Township SUPERVISOR

MERIT YOUR VOTE AND SUPPORT — HE HAS EARNED THE RIGHT TO WARRANT EVERY VOTERS CONSIDERATION!

Shaver is Best Qualified *Township in Splendid Condition*

School Teacher, Businessman and Township Supervisor, Dan Shaver did not seek the post of Supervisor. The Supervisors came to him and offered him the appointment which he accepted and which he has filled admirably for a year. Now his interest is to fulfill many community betterments to which he has dedicated his energies.

Dan Shaver has helped to bring the Township Government to the best financial condition that it has ever attained. He is vitally interested in the problems of roads and refuse, parks and people and all phases of community progress. Keep a progressive official in office. WE dare not go backwards in community progress!

Qualified By Experience - The Township Needs Dan Shaver As Supervisor!

Nominate Shaver for a full Term — He should Not Be Opposed.

YOU CAN BE SURE WITH SHAVER

Only Electricity Provides Flameless Cooking

COOL pots and pans come into direct contact with heating element so there's no wasted heat.

CLEAN there's no fuel grime to stain walls and settle on curtains.

QUICK new, instant-heating elements put heat directly into the pot for speediest cooking.

YOU LIVE BETTER ELECTRICALLY

Harveys Lake Light Co.
"Serving the Back Mountain Area Since 1922"
CHURCH STREET, DALLAS

POOL SUPPLIES

CHEMICALS
For Chlorination
For Algae Control
For Filters

MAINTENANCE ACCESSORIES
Vacuum Cleaners - Brushes
Skimmers — Paints

DECK EQUIPMENT
Diving Boards — Ladders
Diving Stands — Aquaslides
Coco Matting — Test Kits

Filters — Filter Media
Paints

Modern Pool Supplies

WHITESELL BROS.
BUILDING SUPPLIES
PHONE 674-1671
BOX 127, DALLAS, PA.

Route 118—Just Off Harveys Lake Highway