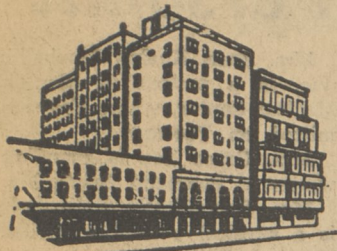


Read The Post Classifieds



HOTEL JEFFERSON
ATLANTIC CITY
NEW JERSEY

Central location overlooking Boardwalk and convenient to Piers, Churches and Theatres — Near Rail and Bus Terminals — Inviting Lobbies and Parlors — Closed and Open Sun Decks Atop — All Rooms Delightfully Furnished — Modified and European Plans — Conducted by Hospitable Ownership Management that delights in catering to the wishes of American Families.
Write for Literature and Rates

Hotel Jefferson
Atlantic City, New Jersey

J. Alfred Rogers Plans To Retire December 11

J. Alfred Rogers, Huntsville, an agent in the Prudential Insurance Co.'s Wilkes-Barre West district office, 525 Wyoming Ave., Kingston, will retire on Friday, December 11.

Mr. Rogers joined Prudential's office here as an agent in 1935. Earlier, he owned and managed the grocery store at Huntsville Dam.

He is a graduate of Luzerne High School and University of Pennsylvania's Wharton School extension in Wilkes-Barre.

Patricia Ann Weaver

Mr. and Mrs. Elmer Weaver, Jr., Noxen, became the parents of a five pound five ounce daughter, Patricia Ann, Nov. 16 at General Hospital. There is another son, Leroy. Mrs. Weaver is the former Betty Swingle, Noxen.

Metropolitan Paintings Exhibited At Miners

A "Loan Exhibition of masterpieces of the Metropolitan Museum of Art, New York City is currently on display in the main lobby of the Miners National Bank Wilkes-Barre. This exhibit marks the first showing of paintings from the Metropolitan in Wyoming Valley.

Sponsored by the Wyoming Valley Art League, the exhibit will continue through December 15 and can be viewed Monday through Friday 9 A. M. to 5 P. M. in the main lobby of the bank.

The "Loan Exhibit" which follows a Christmas theme includes such outstanding works as "The Holy Family" apparently a 17th century copy after Barocci, Giacomo Bassano's "The Adoration of the Shepherds" and Ambrosius Benson's "The Virgin and Child with Four Saints."

Christmas Season Spurs Generations Have Been Served By Main Street Businesses

One of the oldest business districts in the Wyoming Valley area, is the busy town of Luzerne. Many years ago, during the thriving days of the coal mining industry, Luzerne was one of the hubs of Valley activity; and since it was the first large stop in the Back Mountain Area, much of the trade was carried on in the stores of Main Street and the old, established Luzerne Bank.

Today, it is still a thriving Shopping Center boasting business places that have continued through generations. One of these old and reliable businesses is the Finkelstein Jewelry Store. Long known for only quality merchandise, Dr. H. A. Finkelstein continues to serve the public as an Optometrist and Jeweler, priding himself on a sincere interest in his customers. Finkelsteins are still giving honest prices. Another old Luzerne store, established and doing business in the same location for many, many years. Folks are still greeted by Mrs. Greenwald, who is a friend to all. Greenwald's has a large selection of appliances, furniture and gift items, including bedding, china,

always busy—Pritchards has been serving the area many years as a quality pharmacy.

Mayer's Variety Store, located in the former Woolworth store location, is displaying many unusual Christmas items and the prices are always very moderate. Just a few doors beyond Mayers, is the Schechtman Army & Navy Store . . . with its tremendous stock of men's, boys', women's and girls' wear. The shelves are always stacked high with merchandise . . . fresh, new and sizes for all.

Other Back Mountain residents who have a Luzerne business are Bill and Sarah Strauser. Everyone knows the reliable Strauser business reputation and should be acquainted with the quality workmanship in Linoleum and its associate items. One of the largest displays of linoleum and wall tile items in the entire area has built an enviable business for the Strausers.

Women of the Back Mountain have known Ann's Apparel as the shop of quality merchandise. Finest name brands in women's wear are a must in this attractive shop! One-of-a-kind fashions, selected at the market, for individuals, is the reason for Ann's success.

Last, but not least, Luzerne Motors and Fred L. Parry, Rambler, are holding up the automotive end of the community. Both very reliable establishments, they continue to serve the Back Mountain for Ford and Rambler, as well as quality used cars.

If you haven't visited Luzerne yet this Christmas season, you're missing a good bet! The parking is excellent, provided by Luzerne National Bank, and many stores have rear entrances which make for even greater shopping convenience.

Newcomer Club Will Entertain Patients

At a recent meeting of the Welcome Wagon Newcomer's Club held at the Acme Auditorium, Mrs. Emily Lahr gave a demonstration of gift wrapping ideas. All present had the opportunity to make a bow. The making of a holiday punch was demonstrated by Mrs. Ruth Gronka.

Attending this meeting from the Dallas area were, Mesdames James Teevin, Charles Lakeman, May-Dell Davis, Howard Joiner, William Davis, Terry Krammes, Thomas Howard, John Maniskas, Joseph Gerchak, Anees Barakat, Peter Kozachok, Clayton Stetson, Gray Mattern, Edward Newton, Fred Fleming, Richard Sloan, George Tattersfield, Edmund Barnea, Robert Andrews, Clinton Memory, James Kenny, Richard Linsley, Rodney Schmig, Hiroo Hallopeter, W. A. Schilling, Hans Dreher and Arthur Solomon.

The arts and crafts activity group is meeting each Wednesday evening this month at the home of Mrs. Thomas Howard. The group presently is at work making cone wreaths under the direction of Mrs. Lee Eckert.

On December 14th at 6:30, the club will give a Christmas program to the patients at Valley Crest. Following this, there will be a tour of the hospital.

PENNS WOODS NOTEBOOK

By Jim Hopple

Boy Scout Troop 231, Shavertown will begin their second annual Christmas tree selling project on this coming Saturday December 12 at 9:00 A.M. until 9:00 P.M. and on Sunday at 1:00 P.M. to 9:00 P.M. and weeks days from 9:00 A.M. to 9:00 P.M.

A total of six species of trees will be on sale, ranging from two to eight feet tall. These trees are grown locally and are being cut fresh daily. The boys had a good year last year.

With the height in feet and the price you can't beat. Stop in and see Mal Kitcher and boys and tell them that Penns Woods Notebook sent you.

Some tips for the outdoorsmen. (pill box) Little pill boxes make fine holders for the infinite variety and sizes of trout flies. Makes a good reason to visit a sick pal.

Our congratulations and best wishes go out to Arthur Miller Jr. and Robert Schooley in earning the rank of eagle scout. Any boy who becomes an eagle scout certainly has earned his rank.

Antlerless deer protected during the current two week buck season, become legal targets on Monday and Tuesday, December 14 and 15 here in the Commonwealth of Penna. Only hunters possessing a special antlerless deer license for a particular county may legally hunt antlerless deer if they have not already killed a deer this season.

Under the Pennsylvania antlerless deer license system, first started by law in 1951, the Game Commission allocates a definite number of licenses for each county of the Commonwealth. The number varies from year to year and is based on the desired number of antlerless deer to be harvested in order to keep the deer herd in balance with its natural food supply. Last year 204,450 licenses were allocated to the counties, producing a harvest of 35,237 antlerless animals during the two season in December.

Shooting hours for antlerless deer season are 7:00 a.m. to 5:00 p.m. The Pennsylvania buck deer season will close on Saturday December 12 at 5:00 p.m.

Your Christmas GIFT can be found at **STRAUSER'S** Linoleum and Tile CENTER 186 Main St., Luzerne 288-4827 LARGEST SELECTION Linoleum, Paint Trims - Tile - Wall Board Make Selections EARLY! OPEN DAILY 9 - 5:30 THURS. and FRI. 9 to 9

in time to add charm and beauty to your home for Christmas . . . at great Savings!

Town and Country's HOLIDAY CARPETING EVENT!

SAVE to 30 %

On America's Finest Carpeting

LEE'S! MOHAWK! ALEXANDER SMITH! ARCHABALD HOLMES! MAGEE!

Lee's 100% Wool Heavy Textured Random Sheared Pile

This heavy pile with a magnificently textured pattern is one of the most exciting carpets we've had in years. Made of finest virgin wools from Australia and New Zealand, permanently moth-proofed. Choose from 14 lovely decorator shades.

10⁹⁵ YD.

Lee's Plush 100% Nylon Pile Velvet

A fine quality and lovely nylon pile velvet that will give years of service. It's non-allergenic and most stains wipe right off. It's strong enough for your most heavily travelled areas. Choose from a wide range of colors.

8⁹⁵ YD.

Lee's Nylon Tweed Pile

This broadloom is extra heavy and extra durable for years of dependable service. The "tweed" won't show footprints and it spot cleans on the floor. Continuous filament nylon is pill-resistant and won't shed, makes vacuuming a breeze.

7⁹⁵ YD.

9', 12' and 15 Foot Widths

other carpeting from 6.95 to 29.95 a yard

FABULOUS CARPETING CUSTOM TAILORED TO YOUR INDIVIDUAL NEEDS!

Any Size! Any Shape! Any Color! Seamless up to 25x45 feet!

Open every night 'til 9 for your Christmas shopping convenience!

Town & Country FURNITURE GALLERIES

ONE LOCATION ONLY! 253-257 SOUTH MAIN ST., WILKES-BARRE

Gentlemen Prefer Gifts FROM BUDDIE'S MEN'S SHOP

MAIN STREET LUZERNE

NATIONALLY ADVERTISED BRANDS

WE GIVE S&H GREEN STAMPS

JADE EAST Aftershave and Cologne \$2.50 to \$6

- McGREGOR JACKETS
- HANES UNDERWEAR
- ESQUIRE SOX and SUPP-HOSE
- BOTANY SUITS and TOP COATS
- BROOKFIELD SPORT COATS \$25 to \$29.95
- CHAMP HATS — \$3.95 - \$10.95

- Van Heusen DRESS SHIRTS and SPORT SHIRTS \$4.50 - \$7.95
- Wings SPORT SHIRT \$2.98 to \$5.00
- Men's Wool SPORT SHIRTS \$5.98 up

ACTION SALE AT LUZERNE MOTOR CO.

THE OLDEST FORD DEALER IN THE AREA In Luzerne (on the Luzerne-Dallas Highway)

Ray Shovlin Harold Lewis Jack Touey Bill Oliver

Immediate Financing

LOOK! LOOK! EXTRA SPECIAL

Brand New 1965 FORD CUSTOM 500 CLUB SEDAN

NO MONEY DOWN

Big 119" Wheel Base — 289 Cu. Inch, V8 Engine - 200 H. P. Motor—42 AMP Alternator. Nylon - Rayon Carpet, 3 Speed All Syncre Transmission. White Walls. Heater, Radio. Low, Low Price \$2249 Safety Belts

'61 FORD Galaxie 4-Dr. Hardtop, Radio, Heater, Power Steering, 352 V8 Engine with Standard Trans.	\$1295
'61 FORD 6 Passenger Country Sedan. Fully Equipped plus power steering and Power brakes.	\$1295
'62 FORD FALCON Deluxe Station Wagon. Radio, Heater, and Automatic Transmission.	\$1295
'60 PLYMOUTH 4-Dr. Wagon, Radio, Heater, Standard Transmission.	\$745
'63 FORD GALAXIE 4-dr. Sedan, Radio, Heater, Automatic, Power Steering, Power Brakes	\$1995
'63 FORD 9 Passenger Country Squire, All Power Equipped. Looks and runs Like New.	\$2345
'58 CHEVROLET Biscayne 4-Dr. Sedan. Radio Heater, Auto., Power Steering, Power Brakes, 8-Cylinder	\$695
'59 PLYMOUTH Belvedere 4-door. Radio, Heater, Automatic Trans. V-8 Engine	\$695
'60 THUNDERBIRD Hardtop, Full Power Equipped Exceptionally Clean	\$1895
'60 RAMBLER 4-Door Station Wagon, Radio, Heater, Standard Transmission.	\$795
'61 FALCON Deluxe. 4-Door Station Wagon Radio and Heater Standard Transmission	\$1095
'59 FORD Galaxie 2-Door Hardtop, Automatic Power Steering and Power Brakes.	\$895

Above Cars Guaranteed in Writing For 25 Months

OPEN EVENINGS 'TIL 9 PHONE 287-1155