

Recreation — old times

Harveys Lake Steamers

Remember the Harveys Lake steamboats? Sure, you do. The big two-deck Natoma was still a tourist curiosity in the late thirties, although she didn't move from anchor.

This picture dates from about 1900, judging from the fashions on deck, and is one of several taken from a collection of old plates by Jim Kozemchak.

As late as 1929, before the car got firmly established, these steamers met trains at Alderson station and delivered the passengers to various wharves around the lake.

On Sundays, the boats could not do enough runs to meet all the excursionists, who came by train from as far away as Philadelphia and the Lehigh Valley.

There were five steamers: the Natoma, Acoma, Wilkes-Barre, Kingston, and Rosalind, and one launch, the Emily. An older boat, the Shawnee, was dismantled and taken to Lake Carey for reassembly.

All but the Natoma were one-deckers and all were owned by the Wilkes-Barre-Kingston Company, later by the Lake Transit Company.

Signals to stop were from the landings, red for "up-lake" and white for down. At night a lantern was swung wildly, or even a match.

Fernbrook Park

Fernbrook Park is shown in this picture being dismantled to make way for a new plant for Bloomsburg Mills, who occupied the land before Linear.

Fernbrook Park, originally a rest and amusement area set up by the Wilkes-Barre Railway Company for the trolley riders, blossomed into a favorite day-resort. Big name bands became its trademark, national radio and movie personalities its frequent attractions.

Among the stars at Fernbrook: Guy Lombardo, Ozzie and Harriet, and Glenn Miller, to name only a few.

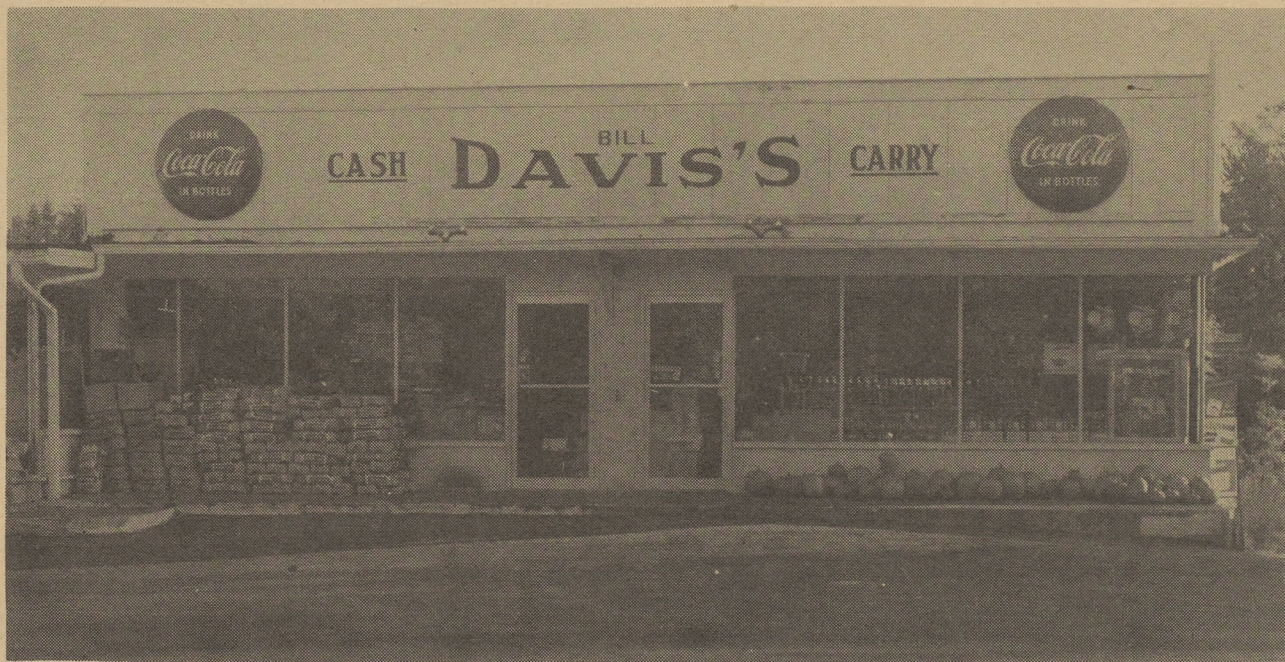
The annual Easter Egg Hunt, one of Dallas's most popular public events, took place at Fernbrook Park.

Old Main Road, which winds along Toby Creek back of Shavertown's business area and down through Fernbrook, then up again across the highway by Forty-Fort Dairy Ice Cream Store and the Episcopal church to Dallas, was the main artery in those days — the road to Dallas from the Valley.

Where did all the lumber from the park go? Scattered to the four corners, we guess. Some people remember trucking it away for firewood. Another tells us some of it was used to build part of Sportsman's Cafe, at Harveys Lake.



A HIGHWAY PIONEER - - - with a NEW NAME



DAVIS' MARKET

*Finest Quality Meats - Fresh Produce Daily
High Quality Groceries*

OPEN 7 DAYS A WEEK - 9 A.M. TO 10 P.M.

**Memorial Highway
DALLAS**