

Old Church Street

The view up Church Street has substantially changed now that the Raub Hotel is out of the picture. But the old bank building pegs the location.

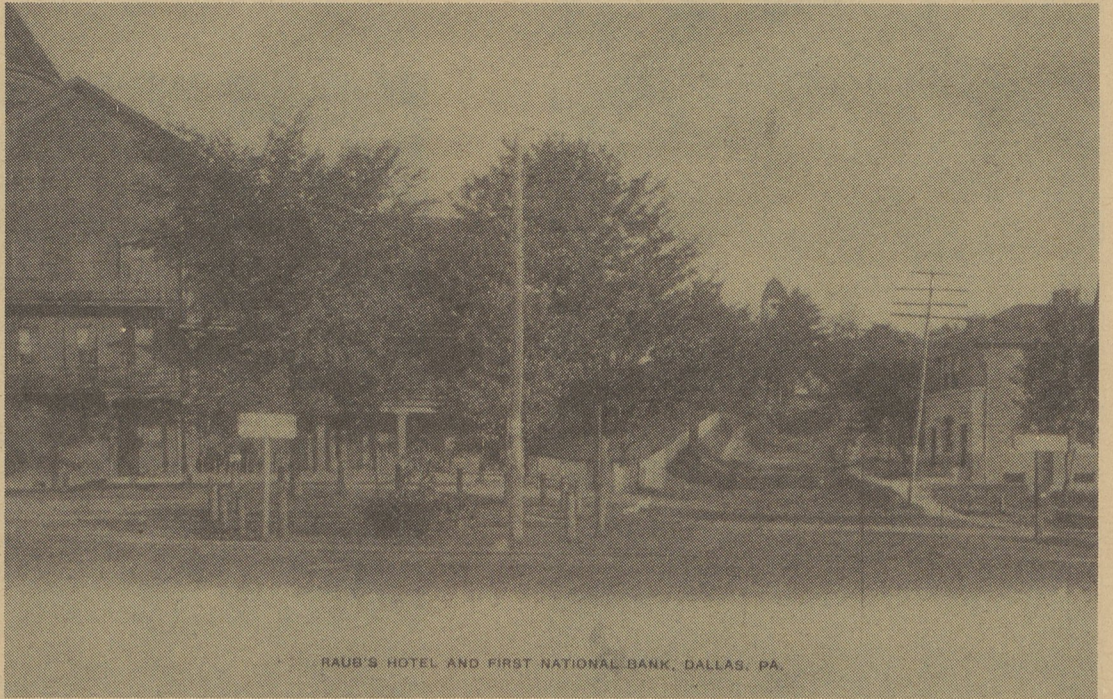
This picture is part of a tourist folder, such as you get when you visit a resort today. The reason: Dallas was a resort, one of the answers why we had so many old time photos available.

Many people had summer cottages and homes out here at the turn of the century, as Dallas's superior elevation, 1128 feet on Main Street, keeps the temperature agreeable, or at least more so than in Wilkes-Barre.

Dallas was on a par with Harveys Lake as vacationland until the arrival of the trolley, and even then, with terrible roads beyond, the average family, loaded down with possessions, could not get to the Lake with any ease.



FIRST NATIONAL BANK, Dallas, Pa.



RAUB'S HOTEL AND FIRST NATIONAL BANK, DALLAS, PA.

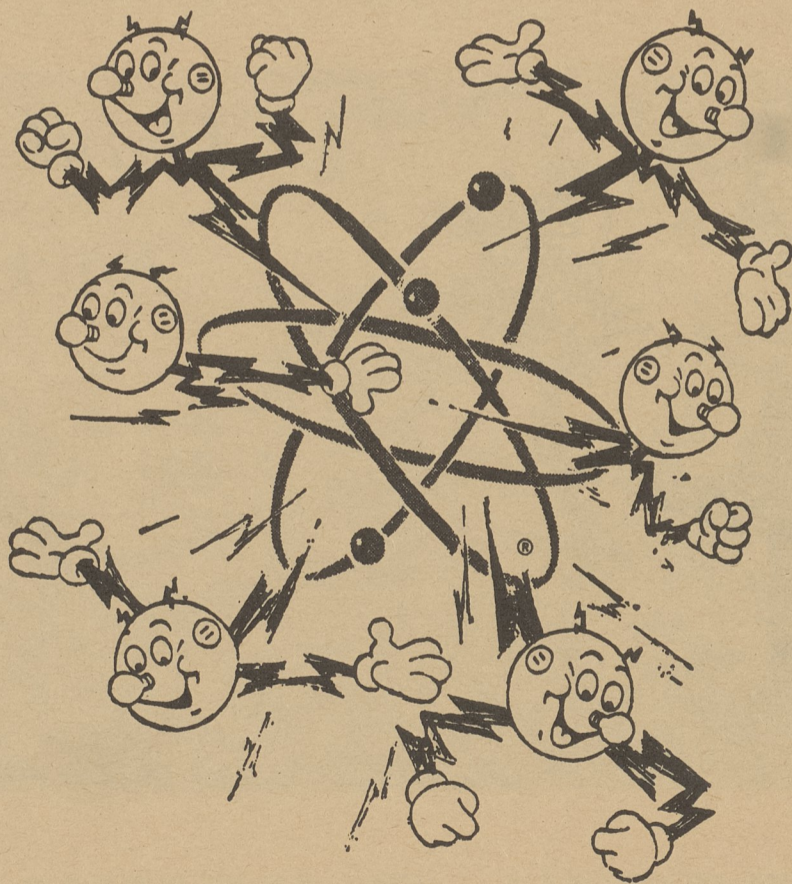
FIVE AND TEN: for many years the Dallas Acme market, as seen here, managed by Township tax collector Dan Richards, this building was occupied by Pete Updyke's Dallas Hardware in 1944. With a new facade, the building, owned by Back Mountain Lumber Company, was taken over by Ben Franklin Stores.

DALLAS BANK BUILDING: also the home of Harveys Lake Light Company and Commonwealth Telephone Company, now houses just the light company.

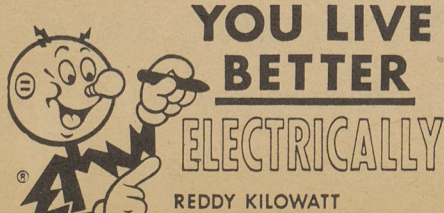
(In the old days, the light company was run by the cottagers in summer only. It was acquired by the late Senator Andrew Sordoni in 1922 and built to present size.)



the Magic Word is **CLICK!**



This little fellow affects your life just as surely as can be. He's all through your home—making your life easier, more pleasant—doing many jobs for you. He's your own personal servant, your favorite little elf, Reddy Kilowatt! He'll be happy to do your laundry, cook your food or light your home. Whenever you need help—just call on Reddy, and the magic word is . . . **CLICK!**



HARVEYS LAKE LIGHT COMPANY
Dallas

"Lighting The Back Mt. Area Since 1922"