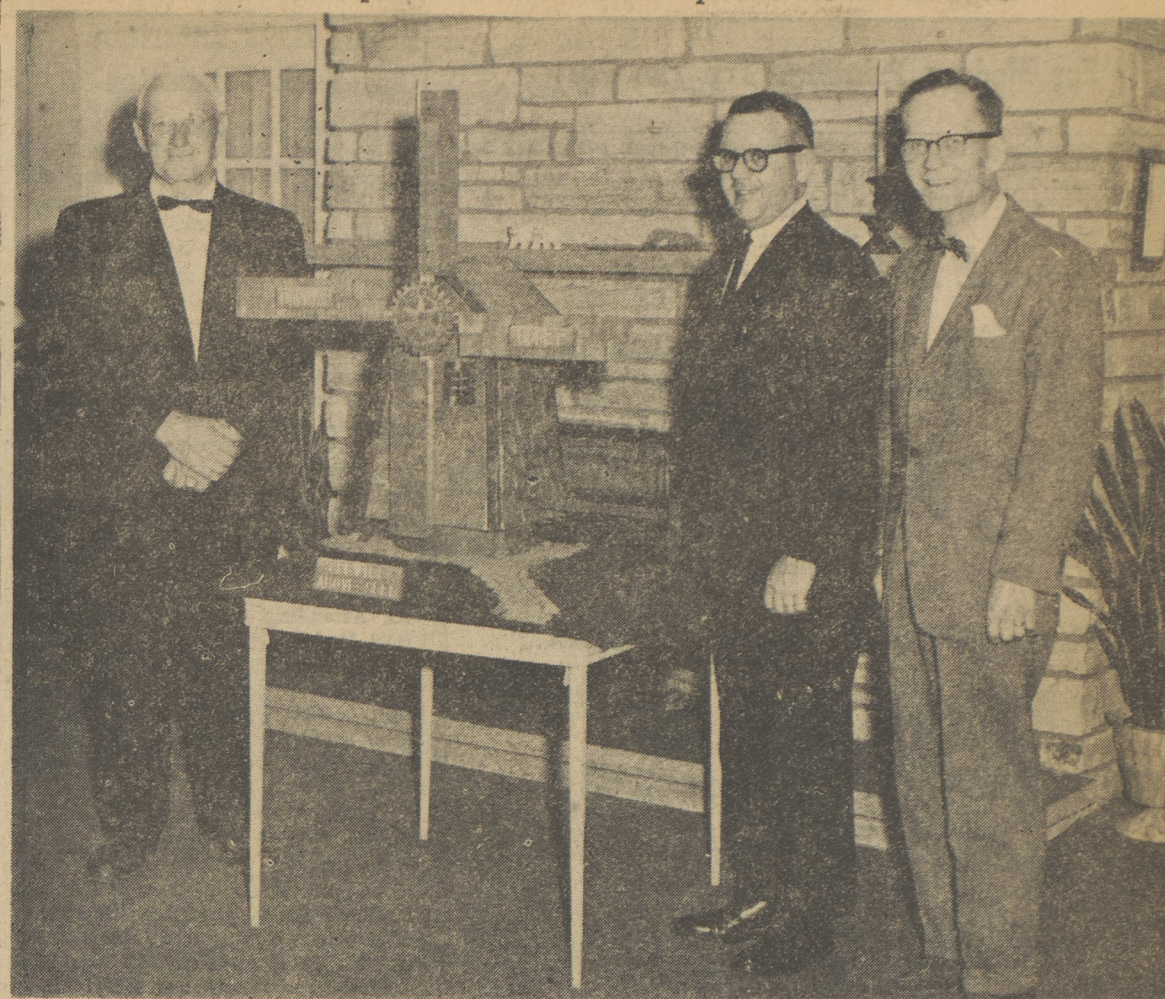


Dallas Rotary To Present Dutch Symbol At Conference



Dallas Rotary Club will enter the Dutch Windmill fashioned and donated by Stefan Hellersperk, in competition at the District 741 Conference of Rotary Clubs to be held at Pocono Manor April 24, 25, and 26. The above symbol of Holland was selected since Dallas Rotary is closely associated with the Delft Rotary Club in that country. Mr. Hellersperk, a master at the art of wood carving, has designed and labeled the spokes of the windmill to represent the closeness of the two organizations, here and abroad. The carving will be sent to Delft Rotary Club following the conference. Thirty-eight clubs will attend sessions at Pocono Manor, and each are matched with a branch of Rotary International in another land. Competition will be held between the various offerings submitted. Above, left to right, are Francis Ambrose, chairman of "On To The Conference" committee; Walter Mohr, incoming president of Dallas Rotary and Mr. Hellersperk, one of Rotary's most willing workers and the creator of the windmill. Earl Phillips will serve as Master of Ceremonies at the Conference on Friday evening. Myron Baker is president of the active service club. Monsignor James T. Clarke spoke on his recent trip to the Holy Lands and showed slides of sacred shrines in Jerusalem at a meeting of Dallas Rotary Thursday evening. Walter Mohr presided in the absence of the president.

**SUPER-RIGHT QUALITY BONELESS NONE PRICED HIGHER!**

# CHUCK ROAST Lb. 55<sup>c</sup>

**BONELESS CROSS-CUT Beef Chuck Roast . . . lb. 69c** | **ARM CHUCK ROAST Bone In . . . lb. 59c**  
**GROUND CHUCK . . . lb. 55c** | **3 lbs. \$1.59** When Sold In Pkg. Of 3 Lbs. or More | **BONELESS STEWING BEEF . . . lb. 55c**  
**Chuck Steak Diced Cut lb. 43c** | **Shank Beef Bone In lb. 39c** | **Boneless Shank Beef lb. 53c**

**SUPER-RIGHT QUALITY . . . YOUNG, FRESH 5 TO 9-LB. AVG.**

# TURKEYS Lb. 36<sup>c</sup>

**SMOKED PORK LOINS Chops or Piece . . . Lb. 79c**

**SUPER-RIGHT SLICED CHIPPED 4-oz. pkg. 29c** | **SUPER-RIGHT SLICED 4-oz. pkg. 29c**  
**Chopped Ham** | **Smoked Beef**  
**SUPER-RIGHT SKINLESS PORK 1-lb. pkg. 45c** | **DOMESTIC 3-lb. can \$1.99**  
**Sausage Small Link** | **Canned Hams**  
**FRESH Ground Beef Lb. 49c** | **SMOKED COOKED WHOLE OR EITHER HALF . . . lb. 49c**  
**Hams**  
**Tender Beef Liver . . . lb. 39c** | **Fresh Whole Picnics lb. 39c**

**SUPER-RIGHT**

## Thick SLICED BACON

1-Lb. 55c Pkg.  
2-Lb. 99c Pkg.

**SUPER-RIGHT**

## LONG BOLOGNA AND LIVERWURST

BY THE PIECE! Lb. 39<sup>c</sup>

**FRESH CALIFORNIA**

# STRAWBERRIES PINT BASKET 39<sup>c</sup>

**FRESH GREEN Beans . . . 2 Lbs. 35<sup>c</sup>** | **FRESH Cucumbers . . . 4 For 29<sup>c</sup>**  
**ASPARAGUS Fresh California 2 lbs. 35<sup>c</sup>** | **Fresh Sweet Corn 5 ears 39<sup>c</sup>**  
**Pineapples each 35c 3 for \$1.00** | **HONEYDEWS Large Ripe . . . each 49c**

**SEAFOOD BUYS!**

**FANCY SEA SCALLOPS . . . lb. 59c**  
**FRESH Buck Shad . . . lb. 10c**  
**FANCY DRESSED WHITING . . . lb. 19c**  
**SMOKED COD FILLET lb. 49c**

**BAYER ASPIRIN Bot. of 100 59c**

**BAKERY SPECIALS JANE PARKER ASSORTED**

# CUP CAKES

**BOX OF 10 PKGS. OF 3 89<sup>c</sup>** Lesser Amounts 10c each

**JANE PARKER LEMON OR JELLY ROLL . . . Ea. 29<sup>c</sup>** **SAVE 10c**  
**JANE PARKER LEMON PIE . . . Ea. 39<sup>c</sup>** **SAVE 10c**  
**JANE PARKER RHUBARB PIE . . . Special Ea. 49<sup>c</sup>**

**White, Yellow, Devil's Food, Dark Choc. Fudge, Choc. Coco. Delight**

**Betty Crocker Cake Mixes . . . 3 Pkgs. 95<sup>c</sup>**  
**Campbell's Vegetable Soup . . . 10 1/2 Oz. Can 13<sup>c</sup>**  
**Beef Stew Dinty Moore Brand . . . 1-Lb. 8-Oz. Can 43<sup>c</sup>**  
**Corned Beef Super-Right . . . 2 12-oz. Cans 89<sup>c</sup>**  
**Roast Beef Super-Right . . . 2 12-oz. Cans 89<sup>c</sup>**  
**Corn Muffin Jiffy Mix . . . 2 8 1/2-oz. Pkgs. 19<sup>c</sup>**  
**Gum Candies Worthmore Assorted . . . 2-Lb. Bag 39<sup>c</sup>**  
**Peanut Butter Ann Page . . . 1-lb., 8-oz. Jar 65<sup>c</sup>**  
**Gentle Fels Pink Lotion 12c Off . . . 1-Pt. 6-Oz. Bot. 49<sup>c</sup>**

**FROZEN FOODS! SPECIAL!**

**SUNNYFIELD WAFFLES . . . 5 oz. Pkg. 9<sup>c</sup>**

**FUDGE NUT, BUTTER PECAN, GERMAN CHOCOLATE Town Square Cakes . . . 14-oz. cake 49c**  
**frozen orange juice, 4 6-ounce cans 99c**  
**Appian Pie . . . 10c**  
**Minute Maid Orange Delight . . . 2 6-oz. cans 37c**  
**Cod Fillet Cap'n John . . . 1-lb. pkg. 45c**  
**Flounder Fillet Cap'n John . . . 1-lb. pkg. 59c**

**COLGATE Dental Cream 3 1/2-oz. Tube 49<sup>c</sup>**

**PALMOLIVE Rapid Shave Regular Size 79<sup>c</sup>**

**A&P Salted Peanuts Vac Pac 7-oz. tin 33c**  
**A&P Spanish Peanuts 1-lb. pkg. 39c**  
**Sunshine Krispy Crackers 1-lb. pkg. 28c**  
**Herb-Ox Bouillon Cubes box of 12 21c**  
**Ragu SPAGHETTI SAUCE . . . pt. bot. 39c**  
**Carnation Malted Milk 15-oz. can 43c**  
**Dole Dietetic Pineapple 2 8 1/2-oz. cans 37c**  
**Dole Pineapple Juice 1 qt., 14-oz. cans 33c**  
**Dole Pineapple Drink 2 1 qt., 14-oz. cans 67c**  
**Yummies Dog Candy 6-oz. pkg. 17c**  
**9 Lives All Tuna Cat Food 5 6-oz. cans 65c**

**THE GOLDEN BOOK HISTORY OF THE UNITED STATES Volume Nine 99c**

**Realprune PRUNE JUICE 24-oz. Bot. 33c**

**Chase & Sanborn INSTANT COFFEE 15c OFF 10-oz. Jar \$1.44**

**A&P Red Pistachios 1-lb. pkg. 99c**  
**Nestles Instant Coffee 6c Off 4-oz. jar 64c**  
**Chicken of the Sea Light Chunk Tuna 1/2-oz. cans 29c**  
**Bachman Pretzel Logs 8 1/2-oz. pkg. 29c**  
**Deep Blue Solid Light Tuna 2 7-oz. cans 59c**  
**San Giorgio Spaghetti 1-lb. pkg. 22c**  
**Hawaiian Punch Sunshine Yellow 14-oz. cans 31c**  
**Tender Leaf Instant Tea 10c Off 1 1/2-oz. jar 79c**  
**Wildroot Hair Dressing 3 1/2-oz. tube 69c**  
**Chore Girl Pot Cleaners pkgs. of 3 23c**  
**Strongheart Dog Food 1-lb. can 10c**

**Scott Bathroom Tissue 11c**  
**Cut-Rite Wax Paper 125-ft. rolls 23c**  
**Scott Towels . . . 2 reg. rolls 39c**  
**Scotties Facial Tissue box of 400 23c**  
**Scotties Luncheon Napkins . . . pkg. of 50 15c**  
**Scott Family Napkins 2 pkgs. of 60 27c**  
**Cut-Rite Plastic Wrap 100-ft. roll 27c**

**CHIFFON LIQUID DETERGENT 1-pt. 6-oz. Bot. 45c**

**Instant Fels 3-lb. 3 1/2-oz. Pkg. 75c**

**PARD DOG FOOD 6 1-lb. Cans 97c**

**REYNOLDS FOIL WRAP 25-ft. Roll 29c**

**AMERICA'S FOREMOST FOOD RETAILER . . . SINCE 1859**

# A&P Super Markets

THE GREAT ATLANTIC & PACIFIC TEA COMPANY

**You SAVE \$1.00 on each Gallon of DEVOE PAINT purchased Before MAY 15th**

**Paint A SPRING TONIC FOR YOUR HOUSE...**

**DEVOE WONDER-1-COAT**

Give your house 2-COAT beauty and protection with just 1-COAT!

DEVOE Wonder-1-Coat has twice the hiding power of ordinary paint, because it has twice the film thickness. Its special pigments screen out damaging ultra-violet rays to provide extra-long protection and beauty.

Reg. \$9.20 gal. **SALE \$8.20**

Reg. \$6.59 gal. **\$5.59**

**Mrs. Mulcey Enjoying Visit In Germany**

Mrs. Paul Mulcey, Overbrook Avenue, who is spending some time in Germany, with her husband writes that the trip has been wonderful, although the weather has not been as favorable. Spring days are now beginning to arrive, however.

Mrs. Mulcey tells of the very old town of Fulda with its many baroque churches, museum and interesting aquarium. The oldest edifice dates back to 820 A.D. She was particularly intrigued with a famous candle shop, also in Fulda, which turns out many unusual designs.

Mr. and Mrs. Mulcey spent Easter in Munich.

# COAL

GLEN ALDEN ON 24-HOUR SERVICE

## BACK MT. LUMBER & COAL Company

674-1441

Crushed Stone Red Shale For

- Driveways
- Parking Areas
- Drainfields

**Jos. Yatsko EXCAVATING** 675-1276

Plant & Quarry - Lehman

DRAINAGE STONE DIRT FILL ASPHALT PAVING

Driveways Parking Areas CRUSHED STONE "Meeting Pa. Dept. of Highway Specifications."

## American Asphalt Paving Co.

696-1114

Plant and Quarry — Chase

**Vinyl Wondertone Sale \$5.59**

**CASH & CARRY SPECIALS ONE WEEK ONLY**

STOCK ITEMS ONLY

**Johns Manville \$6.95** 235 Lb. Roof Shingles sq.

**Plywood Sheathing 12<sup>c</sup>** sq. ft. \$3.84 per sht. 1/2" - 4'X8'

**NU WOOD White Ceiling Tile 10<sup>c</sup>** each 12"X12" Block

**FREE BOX OF FACIAL TISSUES — For The Ladies SATURDAY ONLY**

**Whitesell Bros. BUILDING SUPPLIERS & CONTRACTORS**

PHONE DALLAS 674-1671  
Route 118—Just Off Harveys Lake Highway

— Open All Day Saturday —

A&P Super Markets in Dallas and Vicinity. Prices in this Ad effective through Saturday, April 25, in all