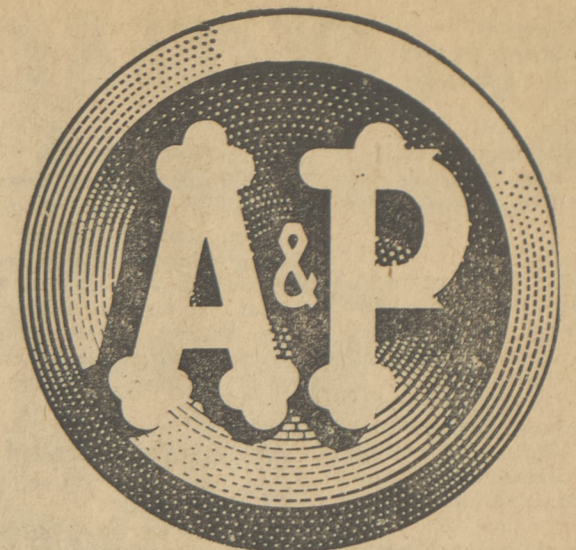


WEEK AFTER WEEK A&P OFFERS YOU BIGGER SAVINGS ON YOUR BIGGEST FOOD EXPENSE WITH...

Meat Values... ONE AFTER ANOTHER



"Super-Right" Quality... CUT FROM YOUNG PORKERS

PORK LOIN ROASTS

A&P'S HALF PORK LOINS CONTAIN THE ENTIRE TENDERLOIN AND WILL WEIGH 5 OR 6 POUNDS.



A TYPICAL A&P HALF PORK LOIN

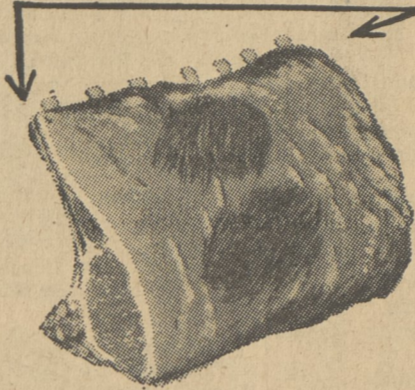
RIB END **23^c** LOIN END **35^c**
NONE PRICED HIGHER!

Rib End SLICED **27^c** Loin End SLICED **39^c**

RIB HALF **45^c** LOIN HALF **45^c** WHOLE LOIN **45^c**

LOOK FOR THE HALF LOINS WITH THE CHOPS ON TOP

AT A&P, A RIB END CONTAINS A FULL 7-RIBS... GIVING YOU MUCH MORE OF THE CHOICE CENTER CUT.



A&P Pork is a Great Buy Because You Get More Good Eating From Any Cut You Choose. A Rib End Contains 7 Ribs, Not Just 4 or 5... and Weighs 3 to 4 Pounds.

LAST YEAR'S PRICES!
Rib End, lb. 49c; sliced lb. 53c
Loin End, lb. 59c; sliced lb. 63c
Rib Half lb. 59c
Loin Half lb. 69c
Whole Loin lb. 63c
Center Cut Chops lb. 99c

FRESH CENTER CUT

PORK CHOPS OR ROASTS

(THIN SLICED Lb. 73c)

69^c

NONE PRICED HIGHER!

SUPER-RIGHT QUALITY

LEG O' LAMB

WHOLE OR SIRLOIN HALF **55^c** SHANK HALF **59^c**

Last Year's Price...Lb. 69c Last Year's Price...Lb. 73c

NONE PRICED HIGHER!

LAMB CHOPS **53^c** **85^c** **97^c**
SHOULDER BLADE CUT Lb. RIB Lb. LOIN Lb.

(Last Year's Price...Lb. 55c...Lb. 87c...Lb. \$1.33)

Lamb Shoulder Roast **37^c**

Lamb Neck Lb. 29c Lamb Patties Lb. 39c
Lamb Combination Lb. 33c Lamb Breast Lb. 15c

ALLGOOD... LEAN, TASTY

SLICED BACON

1-LB. PKG. **47^c** 2-LB. PKG. **89^c**

A&P's SEAFOOD VALUES!

FANCY DRESSED 5-Lb. Box **89^c**
WHITING... 19^c

DANISH LOBSTER TAILS 15 TO 18 PER LB. **\$1.29**

AFRICAN LOBSTER TAILS 6 To 8-oz. **\$1.69**

OYSTERS STANDARD 8-Oz. Can **73^c** SELECT 8-Oz. Can **83^c**
CRABMEAT CLAW 8-Oz. Can **63^c** REGULAR 8-Oz. Can **73^c**
FRIED FISH CAKES 12-Oz. Pkg. **39^c**
FRESH BUTTERFISH Lb. **19^c**

A&P's DAIRY VALUES!

CHEDDAR Mild Sharp
Cheese Lb. **53^c** Lb. **65^c**

SUNNYBROOK LARGE
FRESH EGGS Doz. **59^c**

Silverbrook Butter 1-Lb. Print **69^c**

SMOKED LEAN, SHORT SHANK
PICNICS Lb. **29^c** WHOLE PRE-CARVED Lb. **33^c**

RIB ROASTS ALL 7-INCH CUTS Lb. **63^c**
RIB STEAKS Lb. **69^c** DELMONIGO STEAKS BONELESS BEEF RIB Lb. **\$1.29**

MIDGET LIVERWURST SUPER-RIGHT Lb. **39^c**
SANDWICH SPREAD SUPER-RIGHT 12-Oz. Cup **35^c**
SMOKIE LINKS OSCAR MAYER 12-oz. Pkg. **65^c**

BAR-B-QUEED CHICKEN HEAT 'N' SERVE Lb. **49^c**
SLICED LEBANON SUPER-RIGHT 1-Lb. Pkg. **79^c**
PLATE BEEF BONE IN FOR BOILING Lb. **15^c**

SAUSAGE SUPER-RIGHT FRESH SKINLESS (SMALL LINK) 1-Lb. Pkg. **39^c**
VEAL STEAKS JIFFY FROZEN BREADED 20-Oz. Pkg. **89^c**
NARDONE PIZZA PIES 1 1/4 Lb. PIE **65^c**

SALAMI CHUBS YANKEE MAID Lb. **67^c**
SPARE RIBS COUNTRY STYLE Lb. **35^c**

TENDER BEEF LIVER Lb. **39^c**
STEWING CHICKENS CUT UP Lb. **39^c**

FRESH PICNICS Lb. **39^c**
FRESH BOCKWURST Lb. **79^c**

BAKERY SPECIALS!

JANE PARKER ASSORTED
CUP CAKES
BOX OF 10 PKGS. OF 3 **89^c** 10c EACH

JANE PARKER **Lemon Pie** SAVE 10c Ea. **39^c**
JANE PARKER **Raisin Pie** SAVE 10c Ea. **39^c**
JANE PARKER GOLD OR MARBLE **Pound Cake** SAVE 10c Ea. **39^c**
JANE PARKER WHOLE **Wheat Bread** SAVE 6c 1-Lb. Loaf **19^c**

GARBAGE CANS
10-GAL. **\$1.59** 20-GAL. **\$1.99**

FROZEN FOOD VALUES!

OCOMA BEEF TURKEY and CHICKEN (serves 4) 26-Oz. Pkg. **89^c**
A&P ORANGE JUICE 3 6-Oz. Cans **83^c**
A&P POTATO MORSELS 2 1-Lb. Pkgs. **49^c**
A&P SWEET PEAS 2 10-Oz. Pkgs. **35^c**
LIBBY'S MACARONI & CHEESE 2 8-Oz. Pkgs. **39^c**
BANQUET MEAT PIES 5 8-Oz. Pies **99^c**
BANQUET MEAT DINNERS 2 2 Troys **89^c**
BANQUET SLICED BEEF AND TURKEY 5 5-Oz. Pkg. **29^c**
OCEAN PERCH CAP'N JOHN FILLET 1-Lb. Pkg. **49^c**
HADDOCK DINNERS CAP'N JOHN 10-Oz. Tray **49^c**
FISH STICKS CAP'N JOHN 2 10-Oz. Pkgs. **69^c**

GRAPEFRUIT FLORIDA WHITE SEEDLESS 5-Lb. Bag **49^c**
TEMPLE ORANGES LARGE SIZE Doz. **69^c**
CALIF. BROCCOLI FRESH, TENDER Large Bunch **25^c**
U.S. FANCY RED **Rome Apples** 4-Lb. Bag **39^c** EXTRA FANCY **Mushrooms** Lb. **49^c**
U.S. NO. 1 GRADE "A" MAINE **Potatoes** 50-Lb. Bag **\$1.39** Fresh **BRUSSELS SPROUTS** Pint Basket **23^c**

MIX or MATCH... SPECIAL SALE!

STOCK UP NOW!

8 CANS \$1.00

(Lesser Amounts Sold at Regular Price)

BATHROOM TISSUE HOMESPUN BRAND 10 Roll Pack **69^c**
A&P APPLE SAUCE 2 16-Oz. Cans **33^c**
PEANUT BUTTER ANN PAGE 3 12-Oz. Jars **1.00**
STRAWBERRY ANN PAGE PRESERVES 6-Lb. Jar **99^c**
INSTANT FELS LAUNDRY DETERGENT (11c OFF) 3 3-Lb. 3 1/2-Oz. Pkg. **64^c**
ANN PAGE MAYONNAISE 3 16-Oz. Jars **1.00**

Check the FLAVOR! Check the PRICE!
A&P TEA
FAMOUS SINCE 1859
100 OUR OWN TEA BAGS **95^c**

NESCAFE INSTANT COFFEE
6-Oz. Jar **92^c** (10c OFF)

ARMOUR CANNED MEATS
BEEF 1 1/2 Lb. **49^c** CORNED BEEF 1-Lb. **39^c**
STEW Can HASH Can

FRENCH'S GARLIC POWDER
1-Oz. Bot. **29^c**

AT A&P YOU'LL FIND A LARGE SELECTION of **Diet Delight** Low Calorie Foods

DAILY Dog Food, Meat, Liver, Fish 26-Oz. Cans **49^c**

AMERICA'S FOREMOST FOOD RETAILER... SINCE 1859
A&P Super Markets
THE GREAT ATLANTIC & PACIFIC TEA COMPANY

Prices in this Ad effective through Saturday, January 25, in all A&P Supermarkets in Dallas and vicinity.