

YOUR HEALTH

Al stone was accident prone! The word got around and Al found it more and more difficult to get a job.

Because there are many accident-prone individuals, industries and especially large trucking companies, make careful checks on applicants before hiring them.

It is accepted that the more accidents a person has had in the past, the more likely he is to have accidents in the future.

Characteristic factors are particularly noticeable in the accident-prone group.

Accidental repeaters are tested

from various angles such as intelligence, physiological, perceptual, and psychological.

Accident-prone individuals are usually impulsive, happy-go-lucky, and enjoy excitement.

As a rule, the accident-prone person has little definite planning for the future.

Typically, he resents authority and changes his job frequently.

His antipathy towards discipline sometimes includes hostility towards safety rules and regulations.

Workers who have a physical condition such as muscular incoordination or awkwardness which shows in a lack of precision in mo-

tion, are in some cases observed to be accident-prone.

Faulty judgement however, is considered a more important factor in accidents than faulty body.

Errors in judgement may be due to a personality defect or a mental state, of which the individual is unaware.

These accident-prone persons can often be helped by others.

Do You Know?

First year medical students are expected to learn 13,000 new terms in anatomy, histology, physiology, biochemistry, psychiatry, and clinical medicine.

Lehman Tax Collector Demands Trailer Tax

Tax collector, Bob Disque, Lehman, injected into an otherwise uneventful Township Supervisors' Meeting last week his persistent demand that some measures be taken to provide legal grounds to tax trailers adequately.

Disque often draws attention to the fact that trailers, particularly trailers on the ground rented for a short time, seem to come and go in the night, and no one, including trailer court owners, lays claim to responsibility of counting noses.

The tax-collector's reference to trailer courts touches only one, To-

luba's in Idetown, the lone court in Lehman Township. The laws pertaining to taxing trailer owners, who often live in an area for short periods of a fiscal year, are rather outdated. Solicitor William Valentine said at an earlier meeting this year he suspected the only way to impose a permit on trailer sites would be by invoking a health inspection law in the township code.

There was at the meeting no old business, no new business, and police chief Joseph Ide, then recovering in the hospital from a heart attack, was of course not available to give a police report.

A resident of Cease Terrace, Lake Silkworth, requested the board re-

move some rock fill which they had put in earlier, as it was diverting water onto his land. Allen Major said it had been the Board's understanding that the land concerned belonged to someone else, and that they had diverted the running water because it was blocking the neighborhood association's pump-house.

Police Lieutenant Russell Walters will investigate what may be the beginnings of an auto graveyard on the road near solicitor William Valentines.

For Letter Press Or Offset Try The Dallas Post

Art League Exhibit Nov. 22 Through Dec. 7

Wyoming Valley Art League's year-end exhibition of paintings will be open to the public beginning Friday morning at 9 in the main lobby of the Miners National Bank Building, Wilkes-Barre.

The opening day's show will be from 9 to 9 with Saturday's hours from 9 to 5 p. m. The exhibition will continue every day, except Sundays, through Dec. 7.

This cultural endeavor will mark the 10th anniversary of the Art League which had the late Mrs. Ernest G. Smith as its first presi-

dent. Her daughter-in-law, Mrs. A. Dewitt Smith, Elmcrest, is currently serving as president.

Exhibition chairman is George May, who has announced that nearly 50 paintings will be shown.

He added that because of the large membership in the Art League now totaling more than 300, it has become necessary to display paintings of only half the membership at this time. The remaining members will participate in another exhibition scheduled for February, also at the Miners National Bank.

For Beautiful Wedding Invitations Try The Post

for Thanksgiving Day

FINE FOODS for YOUR FEAST!



SUPER-RIGHT QUALITY... READY TO COOK

TURKEYS

OVER 18-LB. **33^c** Lb.

OVER 10-LB. UP TO 18-LB. **39^c** Lb.

UP TO 10 LB. **43^c** Lb.

You Never Pay More at A&P*

*A&P's advertised price is a fair, low price for the fine quality offered. We guarantee that we will not offer for sale the same brand or item under a different name at a higher price at A&P. Such practices are deceptive and not in the public interest.

RIB ROAST

ALL 7-INCH CUTS **65^c** lb.

RIB STEAKS... 69^c Lb.

BONELESS BEEF RIB **Delmonico Steaks \$1.33** lb.

SLICED BACON

SUPER-RIGHT OR SWIFT'S PREMIUM 1-Lb. Pkg. **49^c**

SKINLESS FRANKS 49^c 1-Lb. Pkg.

OSCAR MAYER... REGULAR OR ALL BEEF **SKINLESS FRANKS 49^c** 1-Lb. Pkg.

A&P's SEAFOOD BUYS!

FANCY SHRIMP

MEDIUM Lb. **65^c** JUMBO Lb. **89^c**

5-Lb. Box \$2.99 5-Lb. Box \$4.19

FRESH OYSTERS

STANDARD 8-Oz. Can **73^c** SELECT 8-Oz. Can **83^c**

12-Oz. Can \$1.05 12-Oz. Can \$1.19

DRESSED WHITING 15^c lb.

DEEP FRIED FLOUNDER 73^c lb.

LITTLE NECK CLAMS 69^c 2 Doz.

FRESH BULLHEADS 43^c lb.

FRIED FISH CAKES 39^c 12-Oz. Pkg.

KING CRAB LEGS 89^c lb.

FOR GIRLS AND BOYS! Deluxe Reading Toys

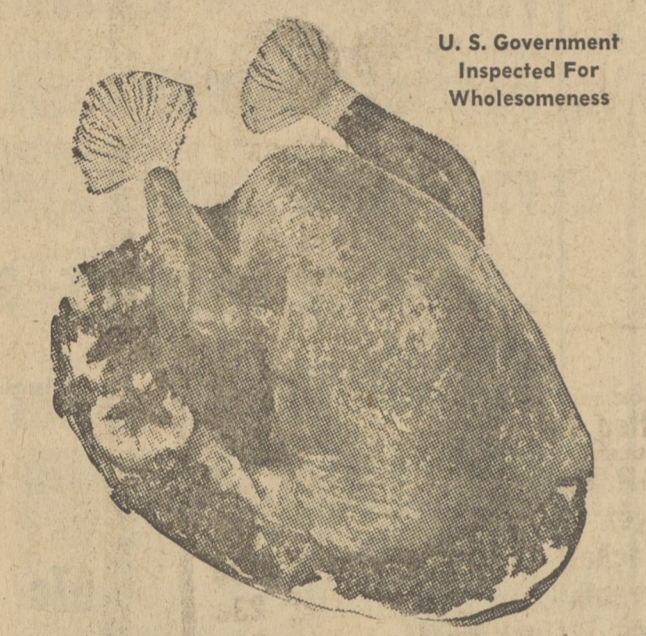
DEBBIE'S DREAM HOUSE \$9.98

NANCY NURSE DOLL \$12.88

TIGER JOE TANK \$12.88

BATTLE WAGON SHIP \$12.88

USE OUR LAY-AWAY PLAN A \$1 DEPOSIT WILL HOLD ANY TOY!



Turkey Roast 89^c 3 TO 5-LB. AVG. Lb.

Cranberry Sauce 39^c 2 16-Oz. Cans

Stuffing Bread 21^c 1-Lb. Loaf

CANNED HAMS \$3.75 5 Lb. Can

Imported Canned Hams \$2.69 3-Lb. Can

French Minute Steaks 89^c 14-Oz. Pkg.

FULLY COOKED HAMS

SHANK PORTION BUTT PORTION CENTER SLICES

lb. **29^c** lb. **39^c** lb. **89^c**

SHANK HALF lb. 39^c BUTT HALF lb. 49^c

LOOK FOR THE HALF HAMS WITH THE SLICES ON TOP

PORK SAUSAGE 59^c 1-Lb. Roll 33^c 2-Lb. Roll

CHICKEN LIVERS 39^c 5-Lb. Tin \$1.89 Lb.

BOLOGNA 49^c SUPER-RIGHT THIN SLICED 1-Lb. Pkg.

DUCKLINGS 49^c SUPER-RIGHT QUALITY Lb.

GEESE 59^c SUPER-RIGHT QUALITY Lb.

CAPONS 69^c SUPER-RIGHT QUALITY Lb.

ROASTING CHICKENS 45^c Lb.

SEMI-BONELESS HAMS 69^c Lb.

HOLIDAY BAKERY BUYS!

JANE PARKER LIGHT FRUIT CAKE

1-Lb., 8-Oz. **\$1.59** 3-Lb. **\$2.99** 5-Lb. **\$3.99**

GIFT FRUIT BASKETS... MADE TO ORDER!

DANISH COOKIES 89^c DEER PARK ASSORTED 2-Lb. Pkg.

MARASCHINO CHERRIES 29^c ORCHARD QUEEN 11-Oz. Jar

APRICOT NECTAR 36^c HEART'S DELIGHT (3c OFF) 46-Oz. Can

DELICIA SUGAR WAFERS 35^c 1-Lb. Pkg.

GRANULATED SUGAR 71^c White Satin Brand 5 lb. Bag

KLEENEX FACIAL TISSUE 43^c 2 Boxes of 400

PUMPKIN PIE 49^c SPECIAL! SAVE 10c Each

MINCE PIE 59^c SPECIAL! SAVE 10c Each

JELLY ROLL 29^c SPECIAL! SAVE 10c Each

RYE BREAD 19^c SPECIAL! SAVE 6c 1-Lb. Loaf

A&P GREEN BEANS 15^c FRENCH STYLE 15 1/2-OZ.

BUTTER KERNEL 16^c W. K. CORN 16-OZ.

GREEN GIANT 17^c CREAM STYLE CORN, 17-OZ.

BUTTER KERNEL PEAS 16^c 16-OZ.

YOUR CHOICE! 4 CANS 69^c

WOODBURY SOAP

3 Reg. Bars **34^c**

2 Bath Bars **31^c**

GULDEN'S Spicy Brown Mustard

8-Oz. Jar **16^c**

HUNT'S TOMATO SAUCE

2 8-Oz. Cans **19^c**

KRETSCHMER'S WHEAT GERM

12-Oz. Size **34^c**

MCCORMICK PARSLEY FLAKES

Can **13^c**

REALEMON RECONSTITUTED LEMON JUICE

Quart Bot. **67^c**

A&P Super Markets

AMERICA'S FOREMOST FOOD RETAILER... SINCE 1859

THE GREAT ATLANTIC & PACIFIC TEA COMPANY

Prices in this Ad effective through Saturday, November 23, in all A&P Supermarkets in Dallas and Vicinity.