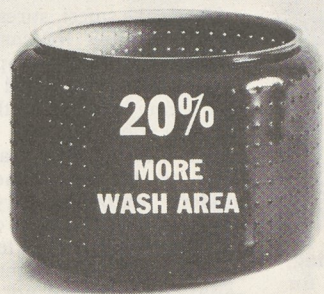


# Norge 14's wash and dry

## 2 to 14 lb. loads

The Norge 14 "Flexi-Load" Washer is new from the floor up to get more clothes cleaner than any household washer ever built



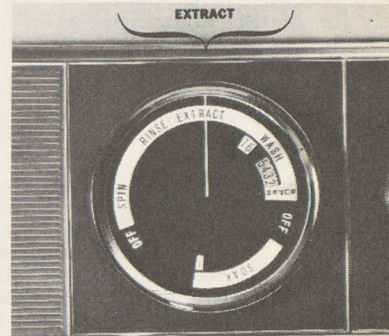
**New Tub, Largest in the Industry**—More than 20% bigger than all competitive brands. Gives room for more clothes to move and turn, get really clean. The only tub in the home washer field that can handle 10 full-size sheets at one time.



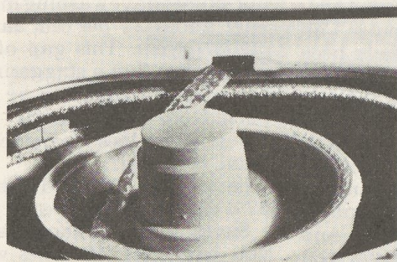
**New, Biggest Agitator**—Engineered to keep big, 14 lb. loads circulating throughout the wash cycle. Smooth, rounded vanes handle clothes gently; won't cause tear, wear or tangling.



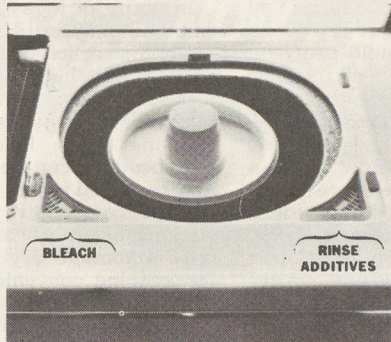
**New Flexi-Load Water Control**—Just right water setting for every fabric, every load—from 2 to 14 lbs. The Norge 14 "Flexi-Load" uses only the water and detergent needed for best washability. No extra basket attachments needed to wash small loads.



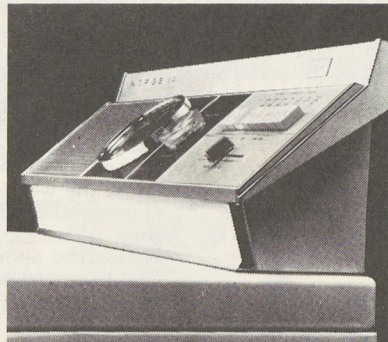
**New, Exclusive Extract Cycle**—For modern day washes. Provides automatic "wrinkle-reducing" cooling of wash and wear fabrics. New, flush-away rinse removes suds and soil from clean clothes prior to high-speed spin. Extract cycle prevents suds-lock.



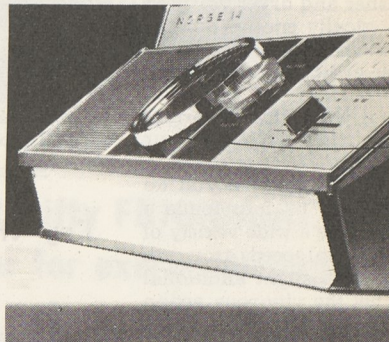
**New, Positive Lint Filter**—Big new size—constant recirculation at all water levels and speeds. Designed to trap more objectionable lint and soil from wash and rinse water. Helps keep wash water cleaner to get clothes cleaner.



**New Timed Bleach and Rinse Additive Dispensers**—Does cleaner washes because the right amounts of bleach and rinse additive are automatically injected at just the right time. Eliminates guessing and waste; gets best results from detergent and washday additives.



**New Tub Light Illuminates Interior of Tub**—Now you can see if any stray pieces of wash are still in the tub. No more groping in the dark with your hands. All-porcelain counter-top lid opens sideways, provides valuable work space for loading and unloading.

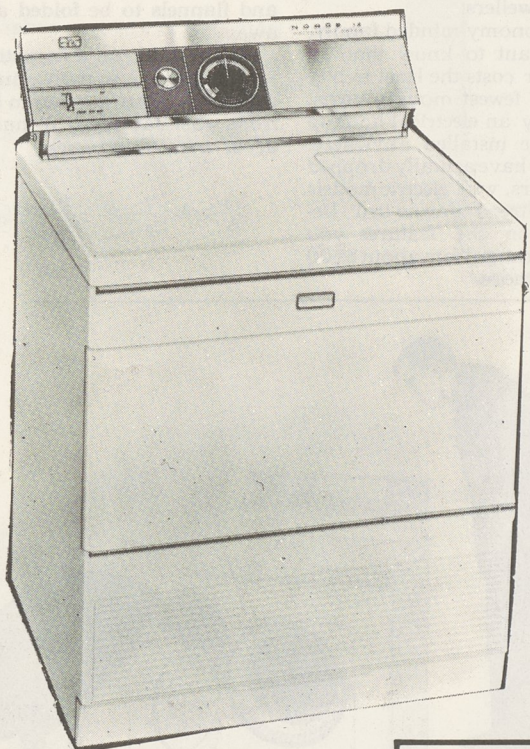


**New "Easy-Vu" Backguard Styling**—More functional, more beautiful than ever. Big new look-up controls on an easy-reading slanted panel. Eliminates squinting, bending. New remote dial makes wash-rinse cycle selection quick and easy.

**THE STRONGEST PARTS AND LABOR SERVICE POLICY EVER PUT BEHIND AN AUTOMATIC WASHER!**

**Norge 2-Year Service Policy.** Normal warranty covers parts and labor for 1 year after purchase by original owner. Norge extends parts warranty for 2 years when customer purchases second year's labor policy from dealer at the time of original purchase.

2-Year Service Policy provides labor and repair or replacement at dealer's option, of functional parts required to maintain machine in normal household operating condition in dealer's servicing area. Invalid when damage is due to misuse, accident, or work by unauthorized persons.



### New Norge 14 Dryer, too!

### Biggest Drying Capacity of all

### ...An unqualified 14-lbs.

- ★ **Biggest Fan**  
2½ to 3 times the size of any other home dryer!
- ★ **Biggest Drum**  
20 to 27% bigger than competition!
- ★ **Biggest Lint Screen**  
3 to 4 times bigger than other major brands
- ★ **4 Ways to dry**  
Tumble or no-tumble, with or without heat
- ★ **Exclusive 5-Year Warranty** against defects in material and workmanship with one-year warranty on motor. Parts repaired or replaced at Norge's option during warranty period. Customer to pay labor charges after first year.
- ★ **4 Separate Drying Cycles**
  1. **Automatic Regular**—for cottons and linens. Dryer detects when fabrics reach proper dryness and automatically shuts off.
  2. **Automatic Wash 'n Wear**—for all synthetic fabrics. Dryer shuts off automatically after a special ten minute wrinkling reducing "cool-down" period.
  3. **Fluff Dry**—for freshening or drying delicate fabrics. Tumbles load for 20 minutes with room temperature air.
  4. **Timed Dry**—select the desired drying time for any load from 5 minutes to an hour and twenty minutes.



BORG-WARNER

NORGE SALES CORP., SUBSIDIARY OF BORG-WARNER CORP., MERCHANDISE MART PLAZA, CHICAGO 54 • IN CANADA: MOFFATS, LTD., WESTON, ONT. • EXPORT SALES: 43 BORG-WARNER INTERNATIONAL, CHICAGO 3

**HIGHEST QUALITY — LOWEST PRICES — BEST SERVICE**

# GOSART'S

## APPLIANCES

DALLAS

674-4621