

Bowling News

By DORIS MALLIN

The leagues are well underway at Crown Imperial Lanes and with three or four weeks of competition behind them, some stronger teams are beginning to pull ahead and the battle has begun.

The Travelling
Crown Imperial Women took 3 from Public's last week as Evelyn Roberts pounded the boards for the local gas, winding up a series with 549, boasting single games of 190-203. Helen Bonomo hit 170 (476) and Bernie Pape turned in 169 (461). Anita Pascavage rolled 167.

Addy Asphalt, with Leo Yankoski hitting 235-192 (595), Bob Moore spilling 224 (575) and Al Ciccarelli

hit 192 (557). Sportsman took all 4 from Kingston Lanes. Boyd White leads COMMUNITY SERVICE League with 8 points after copping all 4 from Orchard Farm. The "farmers" have 7. Franklin is third with 6 and three teams are tied with 5 each.

Peterson and Pryor were the inspiration for White's team. Peterson turned in a big 616 with a beautiful second game of 267 and Pryor hit 232 in the third, totalling 575.

Franklin and Guyette's split 2-2 as P. Schalm hit 210 for Franklin and Guyette's featured W. Lawler with 209.

Stanton's 4 point victory over Bessecker's was led by Zachary with a big 244 (557). White's 2568 total pins were high and Franklin, with 895, took single high.

Sheldon's Lunch Takes Over
Sheldon's Lunch took 4 from Robinson's Kennels and took over the lead in BACK MOUNTAIN NEIGHBORHOOD League with 15 points. Bolton's Diner, splitting 2-2 with Stonehurst, had 14 and Stonehurst has 13. Disque Funeral Home won 3 from Don's Cities Service and Beaumont Inn, 4 from Fuller Brush. Disque and Don's are tied with 10 points each.

Last week's top scorer was Al Ciccarelli for Disque with 219 (605). Joe Kravitz took single game honors with 232 for Don's.

(Week before, Bill Weaver (Beaumont Inn), with a big 247 and Bill Payne with 233 (582) series posted top scores.

Other high figures for the two-week period were posted by Oravitz 232 (562), Rosenberger 220, J. Bolton 200, Engelhart 220, Michael (573), Yankoski 206, Bennett 221, Stredny (574), Ansil 208, Weaver (564), T. Heness 222, Dale Zimmerman 212, LaBar 200, Purvin 213 (582).

Pugh 201, Michael 211, Brace 201, J. Bolton 200, Navich 212, Shershen 213 (596), Stredny 210-201 (573), K. Rogers 228 (573), Winogradski 207, Purvin 217 (569), Vanderhoff 213, Fortey 210 (560), Dugan 211.

Monk Plumbing Ahead By One
After Friday's contest, Monk Plumbing and Heating was leading

Personal LOANS

INTEREST ONLY

\$6 a year per \$100

AT THE FRIENDLY

Miners NATIONAL BANK

YOUR FRIENDLY

"Miners in Dallas"

Main Street, Dallas, Penna.
Open Daily 8 to 2 Friday Nights 5 to 8

MEMBER OF FEDERAL DEPOSIT INSURANCE CORPORATION

PRESENTING

THE NEW FORDS

"Try Total Performance For A Change"

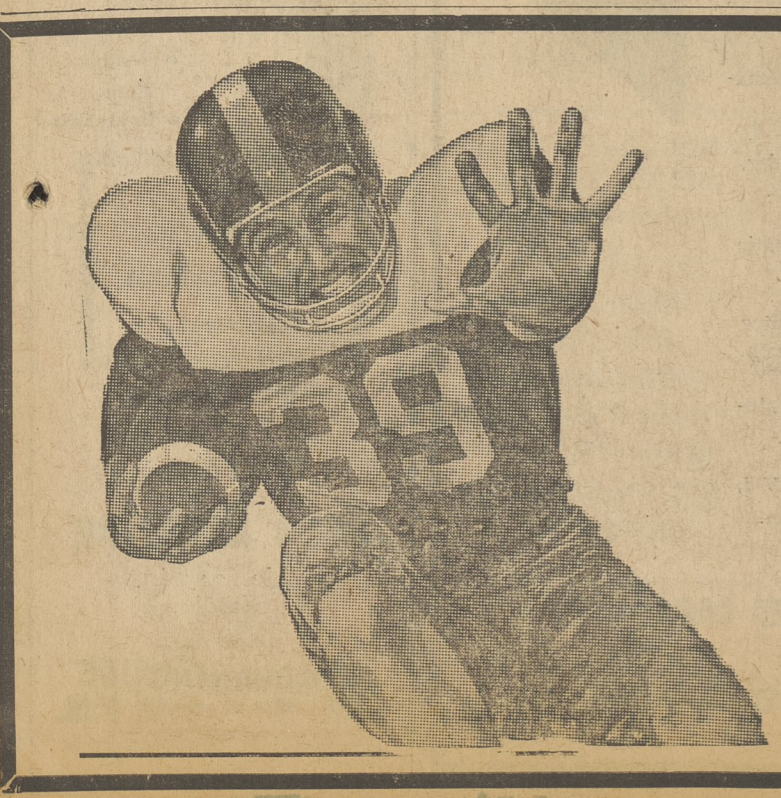
Falcon • Fairlane • Galaxie

Thunderbird

FRIDAY - SEPT. 27

LUZERNE MOTORS

Luzerne - Dallas Highway



Don't Forget To Enter

GOSART'S Football Contest

Winner of 1st Week's Transistor Radio

Ray McClary - 104 Claude St., Dallas

OPEN TO EVERYONE — ONE ENTRY PER PERSON

ENTRY BLANKS AVAILABLE ONLY AT

GOSART'S

Main Highway — Dallas

OPEN 9 A. M. TO 10 P. M.

Plymouth-Dallas Play 0-0 Tie

Taking a step forward into stiffer competition in a season opener, Dallas Mountaineers battled a Plymouth high eleven to a 0-0 draw, and at that held the edge.

Over 2500 fans witnessed the thrilling contest in Plymouth's Huber stadium.

Both teams turned in top defensive efforts when such occasions arose. Dallas stopped a Shawnee threat in the first half on its eight-yard line. Joe Noon turned in the defensive effort as he broke through to drop a Shawnee ball-carrier for a seven-yard loss. This was the deepest penetration for Plymouth in the contest.

Dallas completely dominated play in the second half, and Plymouth had to halt four Dallas drives inside the fifteen-yard stripe.

Halfback Ed Harry, used on wide running plays and as a receiver, was the main offensive threat in the Indians' first half drive as Plymouth failed to do much through the rugged Dallas interior line.

Noon, Farley Threat
Fine running by John Farley on punt returns and the bullish rushes of Joe Noon through the middle kept the Plymouth team with their backs to the wall most of the second half.

Farley returned one punt 25 yards to the Indians' 23 and two others into Plymouth territory.

Mike Jones who played a fine game on defense, and was highly praised by former Plymouth coach Snoggy Mergo, blocked another Plymouth punt.

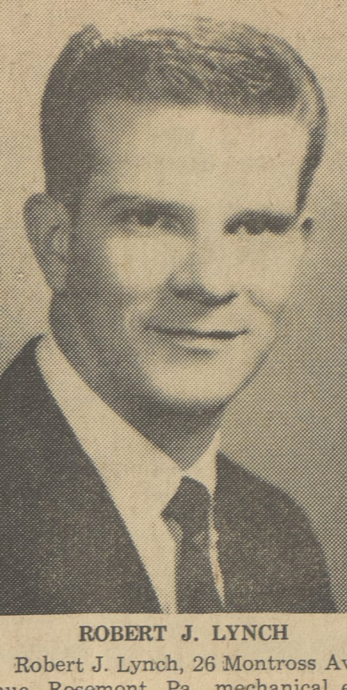
Plymouth did not get into Dallas territory in the second half until the final minute of play.

Linemen John Brominski, Charlie Lockard and Bob Voecker consistently opened holes for the Dallas backs on offense, and on defense did a bang-up job along with linebacker Tom Kerpovich.

Dallas' failure to score was probably because of a poor passing attack. The Mountaineers failed to complete a pass in ten attempts. Plymouth stymied on the ground, didn't have too much more success in the air, completing five of eight passes for 29 yards.

Plymouth's Joe Seibek was a standout on defense throughout the entire contest.

Awarded Scholarship



ROBERT J. LYNCH
Robert J. Lynch, 26 Montross Avenue, Rosemont, Pa., mechanical engineer at NAEC Naval Air Engineering Laboratory has received a one year scholarship from the BuWeps Graduate Award Study Program and will attend Lehigh University where he will work toward a Master of Science degree.

Mr. Lynch is the son of Mr. and Mrs. John F. Lynch, Harveys Lake. He is a graduate of Hanover High School and Villanova University.

Uncomfortable?

GET

Johns-Manville Fiber Glass HOME INSULATION SPECIAL PRICE

16" and 24" Widths

FULL THICK .06" SQ. FT.	MED. THICK .05" SQ. FT.
-----------------------------------	-----------------------------------

This efficient insulation really adds to home comfort. What's more J-M Fiber Glass Insulation slashes fuel bills up to 30 cents on every dollar you now spend for fuel. Stop in now and see for yourself how Fiber Glass Home Insulation will add to your home comfort the year 'round.

Knights Topped By Flyers 15-9

Lake-Lehman victorious in its opening game, ran into a rugged Forty Fort team Friday night and lost a "tough" 15-9 contest highlighted by two field goals.

The contest, played before some 1000 fans, was played on a muddy gridiron and in a slight drizzle. Despite the conditions, both teams hung onto the pigskin rather well, Forty Fort losing the ball twice, while Lake-Lehman did not fumble.

Ken Ellsworth booted a 27-yard field goal for Lake-Lehman, his second of the season, while Dave Lenker booted a 12-yarder for the Flyers. Surprisingly though, both teams failed to kick an extra point in the game.

McDermott Scores
Lake-Lehman drew first blood in the contest, driving 60 yards with Mark McDermott chalking up the TD by taking an eight-yard pass from quarterback Larry Lettie.

First half ended in a 6-6 deadlock as Bruce Grover climaxed a Forty Fort drive by going over from the five-yard line.

Flyers Take Lead
Neither team scored in the third period, but early in the final period, Forty Fort jumped into a 9-6 lead on Lenker's 12-yard field goal after a march from the midfield stripe was halted.

Later in the period the Knight's offense got moving to reach the Forty Fort 10 before the attack fizzled, and Ellsworth stepped back and booted a tying field goal from 27 yards.

LakeLehman tried an on-side kick, but it failed and the Flyers moved 60-yards for the winning touchdown. Final play was a ten-yard pass from Blandina to Whitson for the tally.

Unexplained Reprive

Four freshmen from this area are back at their studies at Mansfield State College after an unexpected reprive of a week due to heating troubles. They are Judy Besteder, John Dana, Marlene Futch, and Gloria Dolbear.

Three Way Tie In Lakers

Burkes Bar-B-Q, Sportsman Bar A and Kocher's Boys are tied with 6 points each; Top Shelf has 5. Burke's Bar B Q had a 970 and Kocher's Boys rolled 2785 total pins.

Big scorer last week was Harold Elston with 247 (638). Harold Kocher hit 221 (591), Bill Rittenhouse 203 (562), Harold Kocher, Jr. 204, Arvil Reish 201 and Betty MacDougall 199 (519).

Four Teams Tied Up

Bernie's Pizza and Forty Fort Lumber have 8 each; Dallas Hardware and Bocar Manufacturing, 7 each in COUNTRY League. Bernie's and Forty Fort had 4 point victories over Hardware and Link's Bar & Grill Tuesday. Bocar took 3 from Joe's Pizza.

Evelyn Roberts and Helen Bonomo, lined up opposite each other, tied with 496 series. Evelyn rolled 188 and Helen hit 167-177. Marge Milne had a single 202 and 490 series. Bernie's Pizza took honors with 320 (2270).

Big scores were posted by Bernie Pape 161-173 (487); Mary Dimmick 163-162 (482), Mona Dymond 179-164 (460), Ruth Bennett 168-172 (466).

L. Lozo hit 178, E. Olenick 172, E. McShea 158, M. Bellas 174.

Watkins At General

Ernest Watkins, Machell Avenue, admitted to General Hospital Monday, submitted to major surgery Tuesday. He is reported as doing well.

SPECIALS SPECIALS

CHANGE THOSE WORN, DIRTY FURNACE FILTERS — NOW —

SIZES

16"X20" 69c EACH

16"X25"

20"X20"

HAVE YOU CHECKED YOUR FURNACE?

WE STOCK ALL SIZES

7" SMOKE PIPE 85c LENGTH

ASBESTOS FURNACE CEMENT 1 lb. can 20c

MASONRY SUPPLIES

REG. CEMENT \$1.35 bag

MOTAR CEMENT 1.15 bag

SAND MIX (45 lb. bag) 1.05 bag

SPECIAL #2 IDAHO WHITE PINE 18c Sq. Ft.

CASH & CARRY

But of Course We Welcome Charge Accounts

FREE Deliveries Made On Orders Of \$50 Or More.

Whitesell Bros. BUILDING SUPPLIES & CONTRACTORS

Route 118 - Just Off Harveys Lake Highway

NEW! HERE! NOW!

RENAULT ... with **AUTOMATIC TRANSMISSION!**

ONLY \$1766

Test Drive It At

COMMUNITY MOTORS

588 Market St., Kingston

Investors MUTUAL, INC.

Investors STOCK FUND, INC.

Investors SELECTIVE FUND, INC.

Investors INTER-CONTINENTAL FUND, LTD.

Investors VARIABLE PAYMENT FUND, INC.

Investors SYNDICATE OF AMERICA, INC.

For prospectus-booklet call **Investors man** or clip this complete advertisement checking the companies that interest you and mail it to your INVESTORS man

Investors DIVERSIFIED SERVICES, INC.

YOUR INVESTORS MAN IS

THOMAS N. KREIDLER JR.
zone manager

26 Division St. Shavertown, Pa.
Phone — 674-5231
Bus. — 822-3266

Also inquire about a planned approach to life insurance needs

Investors SYNDICATE LIFE INSURANCE AND ANNUITY COMPANY
A WHOLLY OWNED SUBSIDIARY OF INVESTORS DIVERSIFIED SERVICES, INC.

ADVERTISED IN READER'S DIGEST