

Shavertown Man Named Area Representative

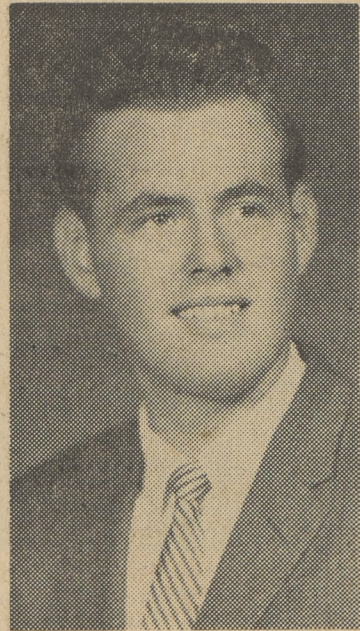
Richard L. Phelps, Superintendent of Agencies for The National Masonic Provident Association of Mansfield, Ohio, announced today that Frederick W. Anderson of Shavertown, has been appointed Area Representative for the Association in Luzerne County.

Mr. Anderson is authorized to accept applications for Disability and Death benefits as well as Hospitalization and Medical-Surgical plans for members of the Masonic Bodies. National Masonic Provident also has available all types of Life Insurance and a complete line of Annuities.

Mr. Anderson's office is located at 120 N. Pioneer Avenue, Shavertown.

The Association has been serving only members of the Masonic Bodies for the past seventy-three years, having been organized in 1890.

Dean Long Elected To Office At Bloomsburg



Dean Long, son of Mr. and Mrs. Charles H. Long, Sweet Valley, has been elected Treasurer of the Community Government Association and College Council by students and faculty of Bloomsburg State College for the 1963-64 year.

A graduate of Lake-Lehman Area High School, Dean is now a junior in Secondary Education. High school activities include Band, Chorus, Future Teachers of America Club, Student Council, National Honor Society; awards received were American Legion Award for Citizenship and Danforth Award for Leadership.

Listed during his two years at Bloomsburg, Dean has been a member of the Maroon and Gold Band, College Choraleers, Student Christian Association, the Madrigal Singers and the Student Pennsylvania State Education Association and College Council. He is a member of the Decorating Committee for the Husky Lounge and is a member of the "Gordie, Dean, and Barbie" entertaining team, which has been one of the most popular groups providing off-campus programs for civic and other organizations.

Evaluate Lake-Lehman's Building At The End Of First School Year

Lake-Lehman High School Principal Anthony Marchakitus was kind enough, at The Post's request, to draw up the following evaluation of the new school plant after its first year.

The school has just celebrated its birthday with the first commencement from the new building.

Despite ups and downs, late-starting classes, and a few partially completed facilities for part of the year, the staff, students, and the PTA all pulled together and kept Alma Mater rolling.

The year was valiant and vacationless, but worth it. This is what they have to show for it:

Residents of the five township area comprising the Lake-Lehman Jointure can be justly proud of their new high school. Planning for this structure began as early as 1958 when the jointure first went into effect. Construction of the building itself did not begin until September, 1961; students began to use the unfinished building in September, 1962.

If present projected enrollment figures prove correct, 1964-1965 will be the year that the building will house its pupil capacity.

Present enrollment of 830 allows scheduling of smaller sections and expansion of the curriculum.

Elective art for senior high has attracted many students who have talent in this area. The third year of Spanish was added this year, next year a fourth year will be offered. The curriculum has been strengthened through the merging of classes which were offered previously. All students now have a choice of two languages—Latin and Spanish. Metal, wood shop and vocational agriculture are available.

Because of the limits of space, further expansion of the curriculum will move at a slower pace. It is hoped that more advanced subjects will be offered, thus aiding the above average student. Present plans also call for growth in the business course.

Efficient use of space is evident throughout the structure. English, social studies, geography and mathematics, taught in regular classrooms, have thirteen rooms devoted to their use. Also utilized in these areas are two double rooms; the larger one, 1700 square feet, features a small stage for student use. This room is frequently used for debates, meetings, and lectures. For normal class usage, this room is divided into two regular sized classrooms. A small double room, 900 square feet in size, is used for small group instruction. With the doors open, the room is slightly larger than the regular classroom. This room makes possible the scheduling of subjects which do not attract a large number of students.

Twentieth century planning is evident in the science area; three laboratories and one classroom are used in this critical area. Each laboratory includes 1000 square feet exclusive of storage space.

Those students who plan to enter the business world are taught their special subjects in one large typing room, with a regular size classroom used for bookkeeping, shorthand, etc.

Areas of major improvement over the old structures are the art-craft room, library, auditorium, gymnasium, homemaking suite, and the shops. The new art room features natural lighting, storage space for work supplies, and special equipment. This room has 1450 square feet of floor area. The library, con-

taining audio-visual storage room, workroom, conference room and office, includes 1875 square feet. Shelf space is given which will allow placement of 5500 volumes; however, at present only 4500 volumes are available. Tables and chairs will seat 56 students.

For the first time the community has available the use of an auditorium. Banked to allow easy viewing of the stage, featuring a specially built acoustical ceiling, the auditorium will seat 514. The stage is fronted by full length steps.

Based on modern staging concepts, the footlights have been eliminated. Carefully pre-set, the overhead lights provide good illumination for all parts of the stage.

Mechanical folding doors convert the large gymnasium (7500 square feet) into two small rooms for daily gym class use, thus allowing the scheduling of two classes during one period. A better organized program of physical fitness with more stress on developmental exercise has resulted.

The new homemaking rooms are equipped to allow practice in all phases of vocational homemaking. Designed for simultaneous use by two small classes, the suite can also be adapted by one large class simply by opening divider doors. This allows greater versatility in planning.

Industrial arts shops are specialty areas designed for use by the student who is vocationally inclined and by the student who considers this work a hobby. Training is now available in both metal and wood shop work. Vocational agriculture classes now have a shop area and classroom to provide an integrated theory-practice subject. All shops are interconnected and each has an outside entrance. To provide for safety of those operating electrical equipment, each shop is equipped with several emergency shut off switches.

Music practice rooms are available for individual or small group rehearsal. The band room is constructed with permanent risers to facilitate band rehearsals. Normally used for rehearsals, the room also becomes the gym stage when the folding doors open. A separate classroom is used for chorus and music appreciation classes.

The building also includes a cafeteria, faculty rooms, administrative suite, conference rooms and student activity room.

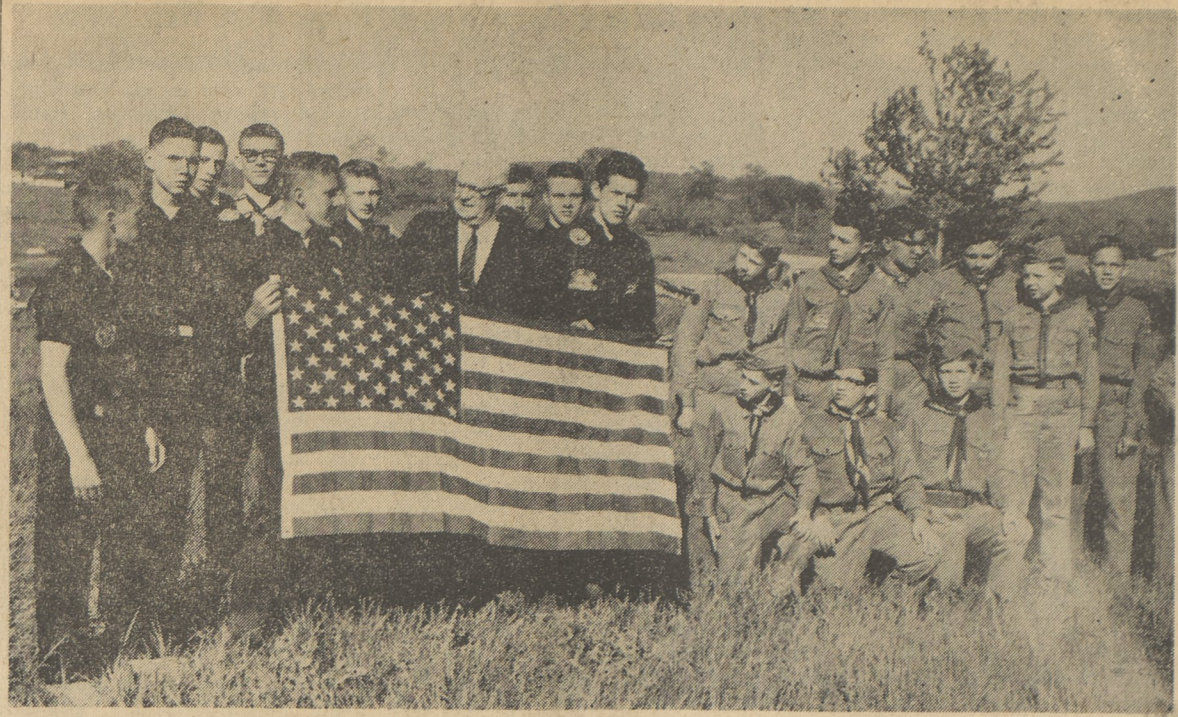
Lake Louise "Reliable" Is Gold Star Sire

Registered Guernsey bull Lake Louise King's Reliable has been named a Gold Star Guernsey Sire by the American Guernsey Cattle Club.

"Reliable" was bred by Raymond Goeringer. His progeny includes 19 daughters with 29 official records averaging 12,143 pounds of milk and 611 pounds fat, and 24 classified daughters with an average numerical rating of 84.4.

"Reliable's" sire was Lake Louise Coronation King, already a Gold Star Sire. His dam was Rockingham Glen Mead with a record of 11,657 pounds of milk and 559 pounds of fat in the 305-day, three-time milking division.

Area Scouts Receive Flag From Senator



Senator Harold Plack gives a flag of the United States to Explorer and Boy Scouts assembled early for the recent West District Boy Scout Camporee, Trucksville.

Local troops and Explorer posts taking part were: St. Therese's troop 232, which finished second overall in the competition; Dallas

troop 281, which finished third; and Shavertown troop 231. Also Explorer post 232.

For the second time in five years the three day affair was held at David Schooley's farm, off Center Street.

Post 231 Explorers took first place in division competition, and

St. Therese's Big Stag Patrol was awarded first among 70 patrols in scouting life.

Scoutmaster John Butler and assistant Scoutmaster Dan McGoog led the Shavertown scouts, and Bruce Davies is Scoutmaster for Troop 281.

Four hundred Scouts took part.

Weston Ruff Is Named Fire Chief

Noxen Volunteer Fire Company elected Weston Ruff president of its organization at a meeting held June 11.

Other officers elected were: William Lyons, vice president; Ernest Teetset, fire chief; Fred Schevck, first assistant; Alvin Strohl, second assistant; Charle Weaver, third fire assistant; Jacob Miner, treasurer; David Fritz, librarian; William McKenna, trustee. Present were: Clark Oliver, Lewis Reese, Binard Mulligan, Albrt Goble, Larry Pederson, Ronnie Vineski, Charles Wittor, Lewis Hopfer, Charles Kovolick, Nathan Straley, Michael Traver, Albert Ruff, Sr., Robert Turner, J. Weston Ruff, William Lyons, Ernest Teetset, Fred Schenck, Cavlin Stroch, Charles Weaver, Elmore Lyons, Jacob Miner, David Fritz, William McKenna.

AUCTION

New and used merchandise, furniture, dishes, garden supplies, hand made quilts, toys, jewelry and many more items to be sold June 22nd at Idetown Corners starting at 10 a.m.

Baked Goods Refreshments IDETOWN COUPLE'S CLUB

SELINGO SIGNS

SIGNS OF ALL KIND BUILT-PAINTED

- TRUCKS
WINDOWS
DISPLAYS
SHO-CARDS
PAPER SIGNS
SIGN CLOTH
SCOTCHLITE
ART WORK

HUNTSVILLE 674-8126

CHOICE LOTS FOR SALE

"Firewood Terrace"

MAIN ROAD, CHASE Phone 696-2223

SPECIAL: Mountain Laurel \$1-\$5 Homegrown Strawberries 49c-55c

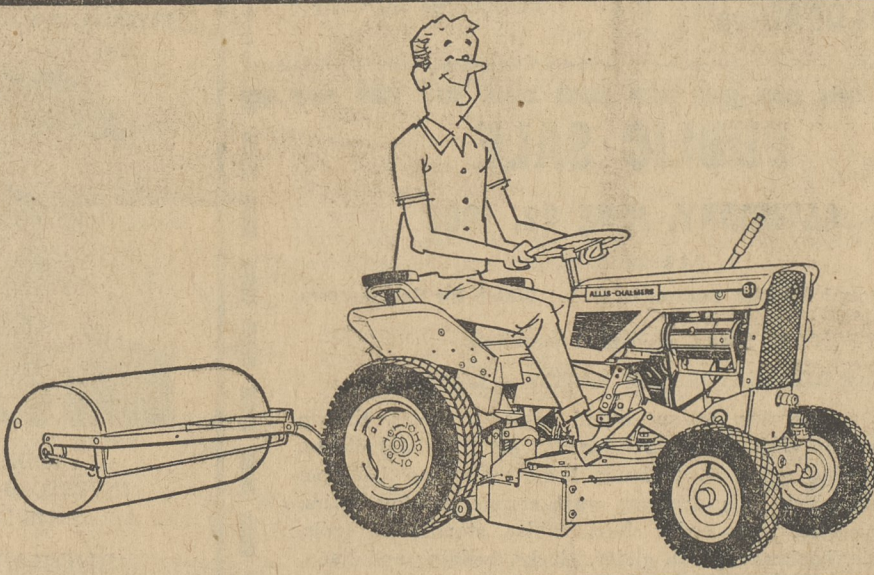
JIM'S VALLEY VIEW NURSERY

CHASE CORNERS

Fertilizers Gardening Tools Shrubs Flowers Fresh Produce TREE SURGERY and LANDSCAPING

Get a harness if you work like a mule.

But get a handy Allis-Chalmers B-1 Tractor if you want to turn hard yard work into fun. You'll still get plenty of exercise and have more time to spend with the family... or the fishing rod. And you'll get pure pleasure out of the generous power to handle lawn rollers, plows, cultivators, blades, snow throwers, etc. But whatever you do, get your tractor from a farm, lawn and garden expert.



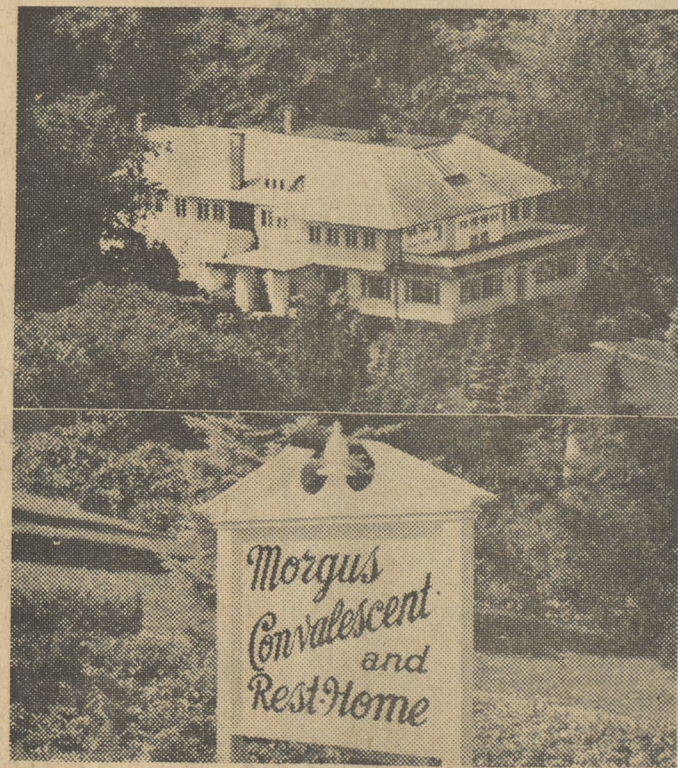
FROM THE FOLKS WHO MAKE THE BIG TRACTORS ALLIS-CHALMERS RURAL SUPPLY CO.

Muhlenburg - Harveyville Rd.

Muhlenburg

Phone 256-3123

BEAUTIFUL NEW... REST HOME OPENS



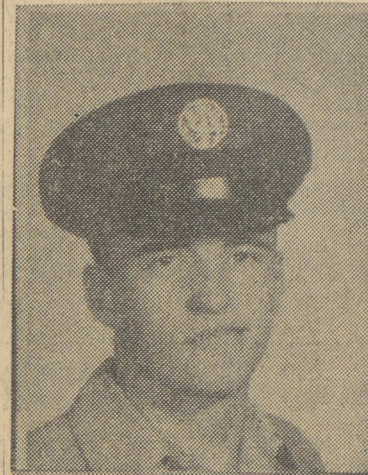
with...REST HAVEN Grounds - 24 Hour Nursing Care -

OVERLOOKS HARVEYS LAKE

For Appointment Call: NE 9-3361

POINT BREEZE - POLE 252 - HARVEYS LAKE

Reassigned Base



AIRMAN DALE T. MAZA

Airman Dale T. Maza, son of Mr. and Mrs. Joseph G. Maza, 142 E. Center Hill Road, has been reassigned a new base to attend technical training courses following completion of United States Air Force basic military training at Lackland Air Force, Texas.

Undergraduate courses will be offered in all fields of study that lead to the following degrees: bachelor of arts; bachelor of science; bachelor of music; bachelor science in secretarial science; bachelor of science in elementary education; bachelor of science in home economics; bachelor of science in nursing; bachelor of science in nursing education.

In the field of education, courses will be: Art in the Grades; Arts and Crafts; Audio-Visual Materials and Techniques; Curriculum Methods and Materials; Educational Guidance; Educational Psychology; General Psychology; Health and Safety Education; Music in the elementary school; Music in Senior and Junior High School; Principles of Geography; Psychology of the Exceptional Child; Science in the Grades; Social Foundations of Education; Tests and Measurements.

In English and Speech: American Literature; Representative English Writers; Romantic Literature; Workshop in Theatre Direction.

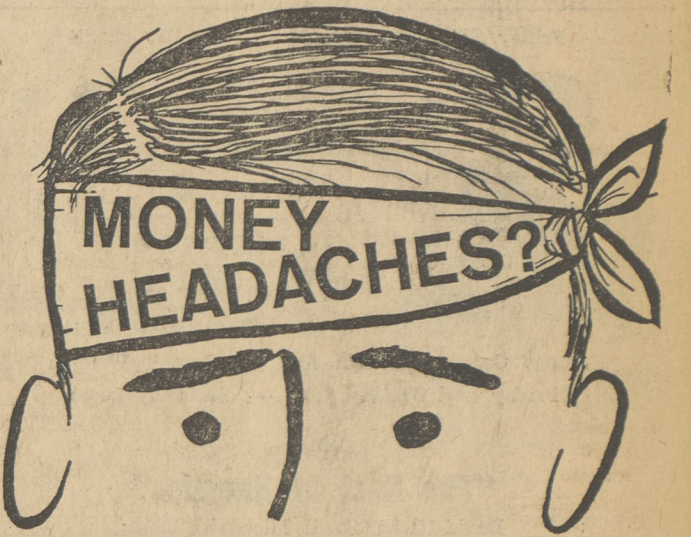
Foreign languages: Methods of Teaching French in Elementary School; Intermediate French; Intermediate Spanish.

Home economics: Home Economics Education; Clothing and Merchandising; Foods and Nutrition; Advanced Clothing.

Music: Applied Music; Instrumental Music; Music in the Elementary School; Music in the Junior and Senior High School; Music in Western Civilization; Theory.

Nursing education: Anatomy and Physiology; Aspects of Community Health; Teaching in Schools of Nur-

For Letter Press Try The Dallas Post



Ease the tension with a Personal Loan from The First National Bank.

Get the cash you need for any worthwhile purpose—quickly and confidentially.

Life Insurance Protection is included in your low bank rate monthly payment.

Table with columns: TAKE, YOU GET, PAYMENT. Rows for 12, 18, and 24 months to pay.

COME IN OR CALL VA 5-4551

THE FIRST NATIONAL BANK OF WILKES-BARRE, PA.

4th Floor • 11 W. Market St. • Open Daily 9 to 5 5 OTHER CONVENIENT OFFICES

MAIN OFFICE PUBLIC SQUARE KINGSTON PLAINS CROSSROADS FAIRVIEW HEIGHTS

COLLEGE MISERICORDIA SUMMER SESSION

JUNE 24 - AUGUST 2, 1963

Graduate and undergraduate courses will be held on the campus at Dallas, Pa.

REGISTRATION JUNE 21-22

WORKSHOP IN TEACHING MODERN MATHEMATICS

for Elementary Teachers JULY 8 to 26

Classes will be limited to 25 persons

WORKSHOP IN TEACHING FRENCH IN THE ELEMENTARY SCHOOL

WORKSHOP IN SPEECH AND DRAMA JUNE 24 TO AUGUST 2

SPECIAL COURSES IN COLLEGE PREPARATORY SUBJECTS, READING AND BASIC SKILLS at College Misericordia Educational Institute

Call 823-0166