

Dallas Senior High News

by
GLORIA DOLBEAR
JUDITH GROSS

Last Thursday, the Valentine edition of Dal-Hi was distributed with some new attractions. The cover was printed with a picture of the High School. It was agreed that this will be permanent from now on; also, candid pictures of students were taken and printed on various pages. Along with the usual articles, it was agreed that these combined to form the best publication this year. Because this was the last edition that will be published by the seniors, they really went to work and well deserved the praise rewarded them. Final edition, published by the Juniors, will be presented just before Easter Vacation.

A gym exhibition, open to the public, will be presented Friday night, March 29. All girls' gym classes will participate and certain boys will perform special events. A slight admission charged will be well worth your while because the girls have been busy practicing in order to give you a fine show.

Intramurals
Heading the boys' intramurals are two teams, both tied with a five wins—no losses record. They are the Royals, coached by Don Martin, and the Raiders, coached by Doug Nicols.

Members of the Key Club have agreed to be coaches for the Little League "farm teams" during the summer. Previously, many youngsters have tried to be on Little League teams, but have been cut during try-outs. This year, however, these ineligible boys will try to put into their own teams, which the Key Club will coach and train, so that

they may, in the future, become star Little Leaguers.

Essay Contest
Luzerne County Medical Society is sponsoring the 1963 AAPS Essay Contest for Luzerne County high school students on a local basis. All students in the 10th, 11th, and 12th grades may participate. Choices of topics are "The Advantage of Private Medical Care," or "The Advantages of the American Free Enterprise System over Communism." Essays must include from 100 to 1500 words and must be submitted on or before March 1, 1963, to Luzerne County Medical Society, 130 S. Franklin Street, Wilkes-Barre. Compositions must be original. They will be judged by a physician, an educator, and one other person, all of whom have some special knowledge of the subject. Three prizes are being offered: \$100, \$50, and \$25. Winners may then compete for \$2,675 in National prizes.

Lake-Lehman wrestlers defeated Dallas Thursday night at Dallas High in a 16-29 victory. It was a great meet though—especially since we all knew that all receipts were given to Freddie Hennebaul's parents.

Congratulations
Dallas students would like to congratulate Charlotte Roberts and Penny Farrar on being chosen to represent Dallas in Rotary Exchange Program next year.

Save On Your Printing
Have It Done By THE POST

Trucksville Soldier Finishes His Course

Army Pvt. William F. Donachie, Jr., 19, whose parents live at 360 E. Main Street, Trucksville, recently completed an 11-week ordnance electronics course at The Signal Center, Fort Monmouth, N. J.

Donachie was instructed in maintaining and repairing guided missile systems.

He entered the Army last August and completed basic training at Fort Jackson, S.C.

Donachie is a 1961 graduate of Central Catholic High School, Kingston.

Gets Combat Course



PVT. ROBERT E. PHILLIPS

Marine Private Robert E. Phillips, son of Mr. and Mrs. Henry W. Phillips, Demunds Road, Orangs, completed four weeks of individual combat training, Feb. 11, with an infantry training regiment at Camp Lejeune, N.C.

A graduate of Dallas Township High School in 1960, Bob enlisted in the Marines September 24 of last year.

The training provides newly enlisted marines with a background of experience in the field under combat conditions. Live-firing exercises are conducted, in addition to field trips and classroom lectures.

Horseshoe 4-H Club

E. V. Chadwick, County Agricultural Agent, met with the Back Mountain Horseshoe 4-H Club Saturday and spoke about hay, grain and grasses. Present were: Lee Johnson, Erica Vivian, Tona Taylor, Nancy Crispell, Michelle Clem, Connie Bogdon, Linda Mekeel, Val Tag, Sally Miers, Dave Spencer, Linda Tag and Mr. and Mrs. Tony Bogdon.

Ranks Have Daughter

Mr. and Mrs. Richard Rank, Harveys Lake, became the parents of an eleven pound seven ounce daughter, Michele Jean, at Nesbitt Hospital, February 4. There are four other children, Gary Robert, 6, Vicki Ann, 4, Randy Lee 3 and Cindy Lou, 2. Mrs. Rank is the former Carol August, Elhorn, Wis. Mr. Rank is employed as a cook at Benton Air Force Base.

LAKE-LEHMAN HIGH SCHOOL



MARILY WOODLING, EDITOR
MARY ANN KUCHEMBA

On April 8 the Lake-Lehman P.T.A. has scheduled an art display, under sponsorship of Mrs. Cornell, at the high school building. Also during the evening the Reed Choir, Brass Choir, and Dance Band will play under direction of Mr. Miliauskas.

Over 400 people responded to the Parents Newsletter sent home to them two weeks ago. The pamphlet contained individual articles directed toward school activities and classes. Articles were written under the direction of faculty members and edited by Miss Marian Huttenstine of the English and Journalism department.

Lt. Tondora Commands Submarine Corsair

Lieutenant Joseph E. Tondora has been advanced to commanding officer of the submarine Corsair (AGSS-435) of Submarine Squadron Two at the Submarine Base in Groton, Conn. He is executive officer aboard the vessel and will relieve Lt. Cmdr. James B. Allen.

The Corsair, designated an auxiliary Sub, is slated for decommissioning. When the ship is decommissioned, Tondora will become executive officer of Sub Grouper of Squadron Two.

Lt. Tondora, son of Mrs. Joseph Tondora, Fernbrook, and his family are presently residing at 175 Shenecossett Parkway, Groton, Conn. A 1948 graduate of Dallas Township High School, he has been with the Submarines since graduating from King's College in 1954, where he was an outstanding varsity football player.

Louis P. Youngblood, 65, Has Fatal Heart Attack

Louis P. Youngblood, 65, lifelong resident of Harris Hill Road, Trucksville, suffered a fatal heart attack Monday evening at 6:30. A high Mass of Requiem will be celebrated from St. Therese's Church Friday morning at 10, with burial in St. Mary's Cemetery.

Mr. Youngblood was born at the family home on Harris Hill Road, son of the late Peter and Mary Belline Youngblood. A retired farmer, he was a member of St. Therese's Church and its Holy Name Society.

He is survived by his widow, the former Josephine Dwyer; sisters, Mrs. William McCauley and Mrs. William Walsh, and a brother, Frank, all of Wilkes-Barre.

Services will be conducted Friday morning from the funeral home at 142 South Washington Street, Wilkes-Barre, where fellow members of the Holy Name Society will recite the Rosary Thursday evening at 8.

Last Friday the Dance Band, a division of the high school band, held a dance in the high school cafeteria during the activity period. The dance was open to all 10th, 11th, and 12th grade students who wished to participate.

Pat Zbick was named Girl of the Month by the Lehman Women's Club last week. She was selected according to her religious convictions, her scholastic ability, and her leadership. A member of Our Lady Mount Carmel Church, Lake Silkworth, Pat is in the Honor Society, F.T.A., F.H.A., Yearbook Staff, and the school Chorus. The Club honored Pat at their meeting on February 13.

Miss Dolgas, English major and practice teacher at Lake-Lehman, will be helping with the school paper, the Crusader, while she is teaching at Lake-Lehman. Miss Dolgas is former editor of the Miss Recordia.

Edward Hollis, Jane DelKanic, Pat Zbick, Renald Davenport, Anthony Foster, and Stanley Rusiloski, were selected by Mr. Johnson, guidance counselor, to participate in the Senatorial Scholarship program. He chose the students on their school record and marks in the different scholastic tests taken by the class.

Mr. Harry Howell died suddenly last Monday. Mr. Howell was custodian for the Lehman Building for approximately eighteen years. Mr. Ellsworth represented the Faculty at the funeral Thursday, February 14.

Pat Zbick and Edward Hollis are participating in the Thom McAnn Leadership Award. Candidates will prepare a 300 word essay entitled "College Education and Leadership", to be submitted March 1, 1963. The papers will be judged on sincerity, objectivity, and concept as well as literary merit. Twelve scholarships and twenty-four awards will be presented to the winners.



GET IT AT THESE STORES

Evans Drugs

Shavertown

Gosart's Mkt.

Shavertown

Zig's Economy

Casstown

Jeffersons Mkt.

Demunds Corners

Moore's Mkt.

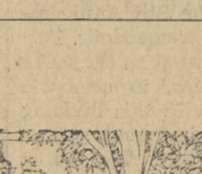
East Dallas

Caddie Labar

Dallas

Klansek's Mkt.

Lake Silkworth



START YOUR WINTER DO-IT-YOURSELF PROJECT NOW and SAVE



Washing Windows is Easy

SEE... the NEW VERTICAL SLIDER WINDOW

Priced from... \$13.70 Per Unit

Completely Weatherstripped Primed and Sash Lock Applied

when they are BILT-WELL removable windows

...that's not all! You'll enjoy the fuel saving, the ease of opening... facilitated by Bilt-Well's patented features that insure your year 'round comfort and convenience.

And, that's not all... Call us today.

IDAHO WHITE PINE 1"x 2" — 3c lin. ft. 1"x 3" — 4c lin. ft. 1"x 12" — 12 1/2c lin. ft.	SHEET ROCK 5c SQ. FT. Cash 'n Carry Special	4x 6 — \$1.20 sht. 4x 7 — \$1.40 sht. 4x 8 — \$1.60 sht. 4x 9 — \$1.80 sht. 4x 10 — \$2.00 sht.	STERLING GRADE IDAHO WHITE PINE — All Sizes — 1" x 4" thru 1" x 10 ins. ONLY 22c SQ. FT.
---	--	---	--

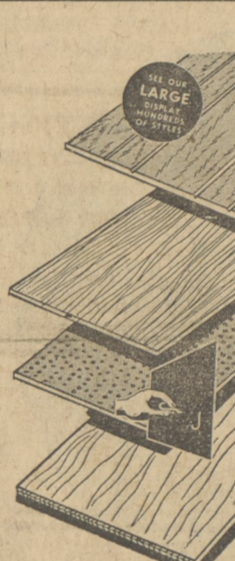
MAHOGANY PANELING
Do An Entire Room or Just One Wall
\$5.25 A Sheet

Hardboard
Standard 4'x8'x 1/8" \$1.90 A Sheet

Peg Board
Tempered 4'x8'x 1/8" \$2.88 A Sheet

Plywood
4'x8'x 1/4" G.I.S. Interior \$3.20 A Sheet

PEGBOARD FIXTURES 39c pk.



Wire TRASH BURNER \$2.10
Metal Incinerator \$5.30

1 1/2 Qt. Plastic Pail 79c

20 Gallon Garbage Cans \$3.48

SPECIAL! TOILET SEATS White & Color \$2.70

LUMINALL PAINT — Clearance SALE Save 30%

EXTERIOR	Fir Sanded	PLYWOOD	INTERIOR	Fir Sanded	PLYWOOD
1/4-4x8 AC 11c sq. ft.	\$3.52 sheet	1/4-4x8 AD 10c sq. ft.	\$3.20 sheet
3/8-4x8 AC 15c sq. ft.	\$4.80 sheet	3/8-4x8 AD 14c sq. ft.	\$4.48 sheet
1/2-4x8 AC 19c sq. ft.	\$6.08 sheet	1/2-4x8 AD 17c sq. ft.	\$5.44 sheet
3/4-4x8 AC 26c sq. ft.	\$8.32 sheet	3/4-4x8 AD 25c sq. ft.	\$8.00 sheet

CEDAR LUMBER
CONSTRUCTION GRADE — RANDOM LENGTH 2" x 4" s'
2" x 4" x 8' — 64c ea.
2" x 4" x 10' — 80c ea.
2" x 4" x 12' — 96c ea.
2" x 4" x 14' — 1.12 ea.
2" x 4" x 16' — 1.28 ea.
12c sq. ft.

Weather-proof Homasote Insulating
BUILDING BOARD 10c Sq. Ft.
4 x 6 — \$2.40 per sheet • 4 x 8 — \$3.20 per sheet CASH 'n CARRY
4 x 7 — \$2.80 per sheet • 4 x 10 — \$4.00 per sheet SPECIAL

WHILE THEY LAST
FREE HOT PADS FOR THE LADIES WHO STOP IN TO SEE US.

ABOVE PRICES ARE CASH AND CARRY
If order is over \$50.00, we furnish FREE Delivery. We welcome CHARGE ACCOUNTS. Inquire about our Optional Payment Plan.

Complete Line of Building Supplies

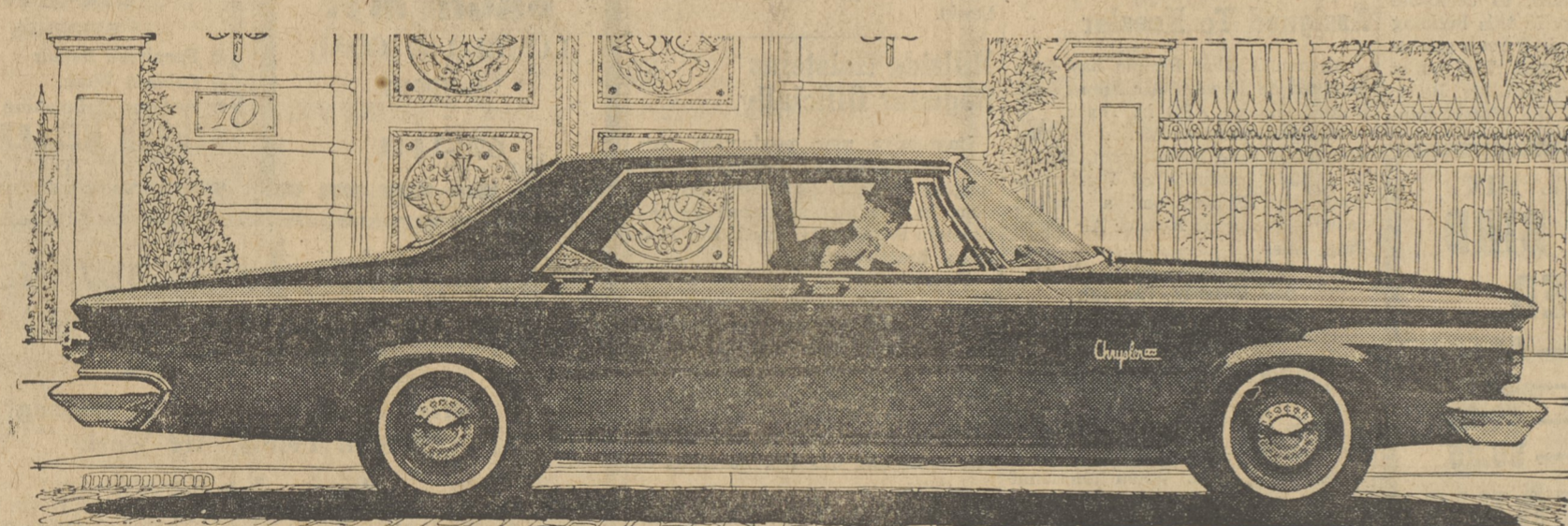
STORE HOURS
8 A.M. - 5 P.M.
Except Saturday
8 A.M. - 1 P.M.
Route 118 - Just Off Harveys Lake Highway

Dear Dallas-Wilkes-Barre Commuters:

The Modern Columbia Catering Delicatessen is an easy stop after work for salads, fresh baked goods or a quick evening meal (especially on Friday—fried fish, fresh cole slaw and homemade oven-fresh rolls.)

Columbia Catering is located on a direct route from Wilkes-Barre to Dallas. Continue past Kingston corners four (4) blocks to Columbia Catering, then on to the Luzerne-Dallas Highway.

Sincerely yours,
Columbia Catering



This is the economical Newport 4-door sedan

\$2964*?

Sounds unbelievable for a Chrysler. But it's true. And we're ready to prove it to you.

Considering the full-size value you get in a Newport 4-door sedan, we can appreciate why so many ask us to prove that a Chrysler can be priced so low.

We're always happy to. Because we can talk about full-size comfort; big, booming V-8 power (fed by economical regular gas); rich fabrics; lush carpeting. Plus America's best and longest new-car warranty—5 years or 50,000 miles.

So why not compare the facts, the figures, the features, with any car anywhere. We think you'll find the \$2964 Chrysler sizing up as the finest value in town.

Your Chrysler dealer's ready with the proof.

*Your authorized Chrysler Dealer's Warranty against defects in material and workmanship on 1963 cars has been expanded to include parts replacement or repair, without charge for required parts or labor, for 5 years or 50,000 miles, whichever comes first, on the engine block, head and internal parts; transmission case and internal parts (excluding manual clutch); torque converter, drive shaft, universal joints (excluding dust covers), rear axle and differential, and rear wheel bearings, provided the vehicle has been serviced at reasonable intervals according to the Chrysler Certified Car Care schedules.

*Manufacturer's suggested retail price of Newport 4-door sedan, exclusive of state and local taxes, if any, and destination charges. White wall tires extra.

FULL SIZE CHRYSLER
SEE "EMPIRE," CHRYSLER CORPORATION'S WEEKLY HOUR-LONG TV ADVENTURE SHOW
HOWARD ISAACS

CHRYSLER DIVISION CHRYSLER MOTORS CORPORATION
163 MEMORIAL HIGHWAY TRUCKSVILLE, PA.