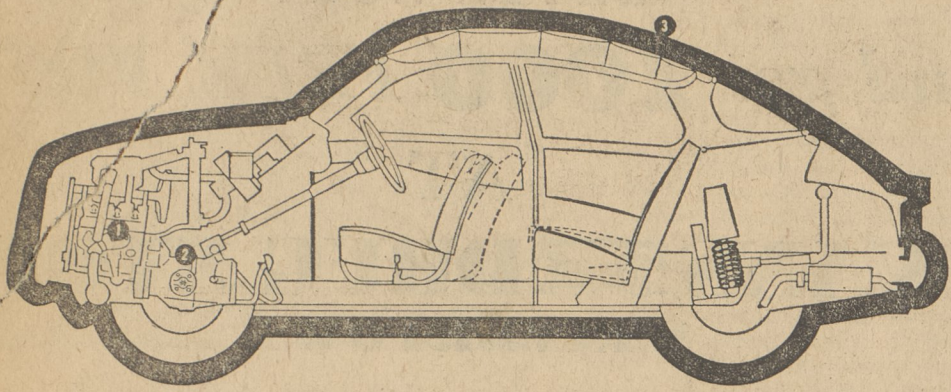


Read The Post Classified Ads

1963 SAAB... built so well that it has a 24,000-mile/24-month written warranty*



Take a critical look at SAAB engineering

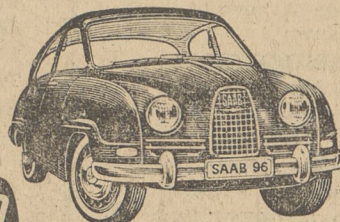
1. SAAB TWO-CYCLE ENGINE, an economical, quiet three-cylinder valveless unit makes every stroke a power stroke, produces 6-cylinder power with only 7 basic moving parts. Engine, transmission, and differential are constructed as one compact unit which eliminates 103 points of friction, wear, potential trouble. Design is proved by world-wide competition driving victories, and by the many SAABs that have delivered low-maintenance performance past the 100,000 mile mark.

2. SAAB FRONT WHEEL DRIVE transmits full engine torque directly to front wheels, providing sure-footed traction to pull the car firmly around corners and through mud, ice, and snow. Other advantages: more comfort and space and weight savings (no driveshaft hump), greater directional stability and handling ease under all road conditions.

3. SAAB BODY SHELL, a practically uncrushable steel airfoil on wheels, is designed for best aerodynamic efficiency, high cross-wind resistance, minimum road noise. Moreover, body shell combines heavy 18- to 20-gauge steel (thicker than most American cars) and rigid unitized construction for optimum safety.

COUNT AND COMPARE basic engineering achievements. You'll find the SAAB 96 unquestionably more advanced than any car in—and most cars that are beyond—its price class. This car was built to be better, not different... built by one of Europe's leading aircraft manufacturers... built for those who enjoy mechanical excellence, technical uniqueness, and extraordinary craftsmanship.

*Engine, transmission (3- or 4-speed gear box available), and differential have a written warranty for 2 years or 24,000 miles.



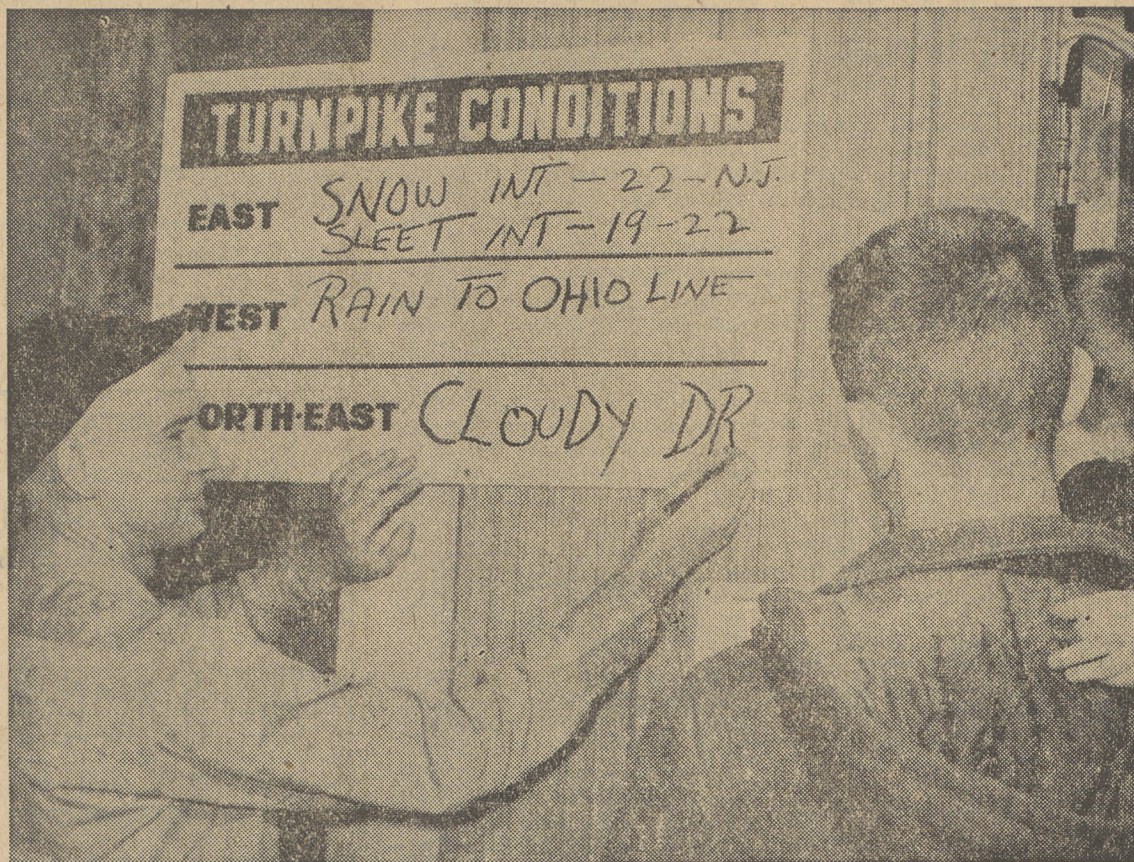
\$1895 P.O.E. (little enough for one of the world's best engineered cars)

KUNKLE MOTORS

Kunkle

DAN MEEKER, Prop.

675-1546



Assistant Service Station Manager James Davis at a turnpike station. Each of the 26 service areas of Mechanicsburg posts road conditions for and all 38 interchanges this year will display motorists in the Pennsylvania Turnpike's Mech- turnpike conditions.

Pennsylvania Turnpike Commission Will Post Radioed Weather Changes

All Pennsylvania Turnpike travelers this winter will have advance warning of road conditions on the 470 miles of superhighway.

Posted at all of the 38 interchanges and now at the 26 service stations are road conditions for the entire turnpike.

Motorists can easily observe the signs hanging above the clocks at toll stations. In the service areas the signs are located near the exit.

The road conditions are provided by the turnpike's \$3 million radio network which gathers information from 55 reporting stations six times daily. More frequent reports are issued when conditions warrant.

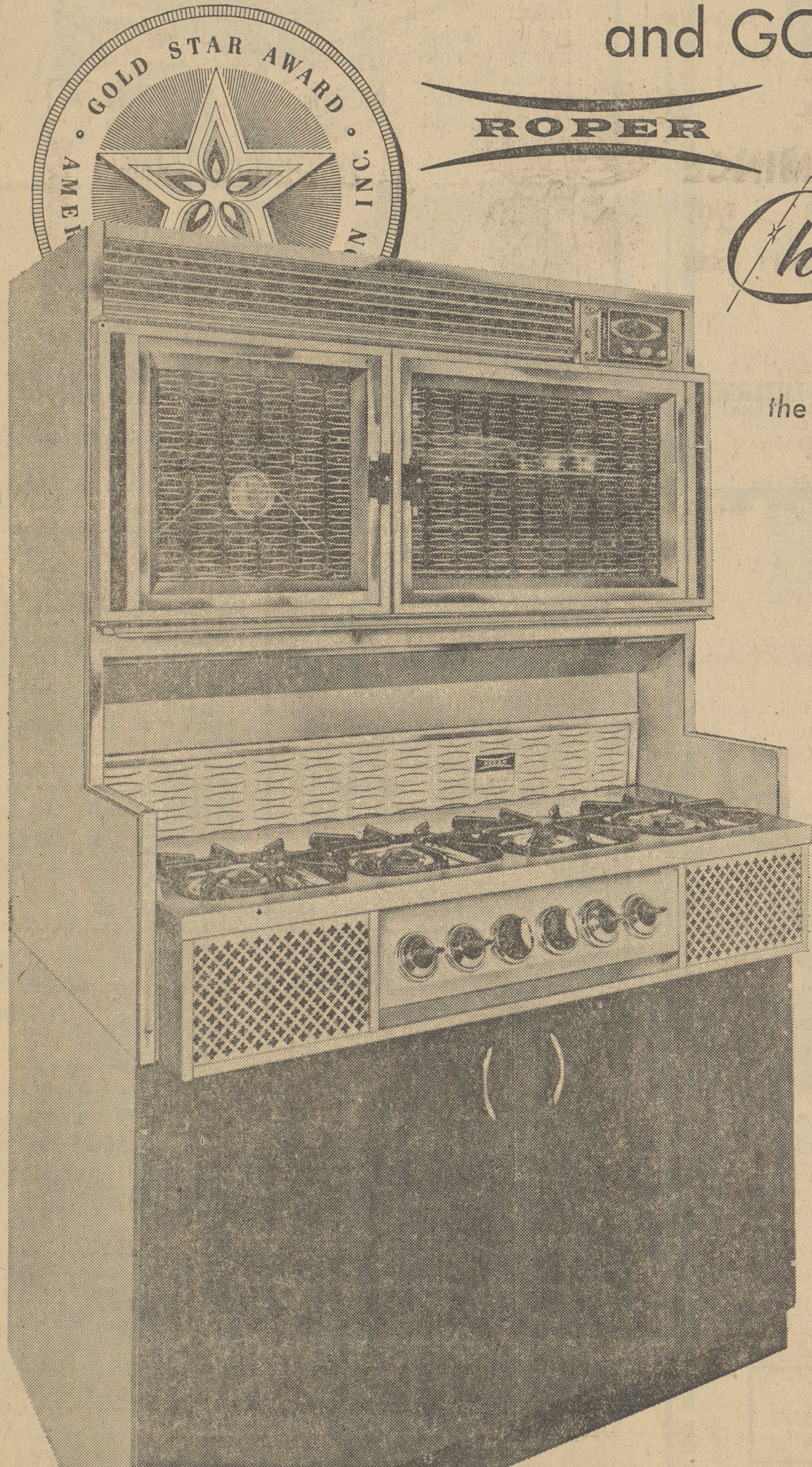
Upon compilation of the information from across the state, radio operators advise all interchanges, who in turn change their signs and call managers of service stations who post the conditions.

Commission officials said the new innovation should aid motorists and the Commission alike. He said in the past many turnpike drivers continued on journeys in anticipation that the weather would improve. Now service areas will have accurate information rather than "guess reports."

Lake Considers Aid

Lake Township Board of Supervisors agreed to apply for forms and further information concerning available federal funds under the new Public Works Acceleration Act, at the November meeting Saturday.

GOOD COOKING and GOOD LOOKING!

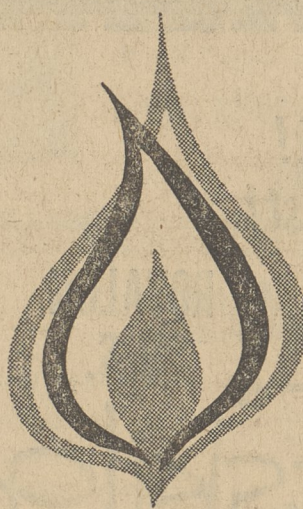


ROPER

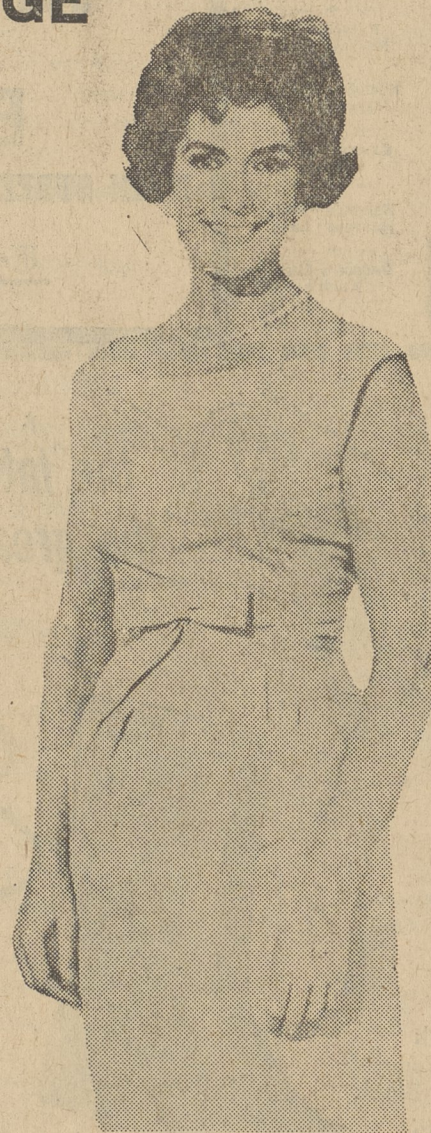
GAS

Charm RANGE

the ultimate in cooking pleasure!



'America's Finest Gas Range'



Take a tip from nationally-known star, Jinx Falkenberg, lovely Gas Industry personality... A modern, automatic Gold Star Gas Range will make all your baking, broiling and cooking a real, deep-down pleasure with more appetizing meals for your family. It's not the same without the flame!

Buy Now... Save... No Down Payment... 3 Years To Pay... Buy Gold Star Gas Ranges for as little as \$1.50 per week... No Costly 3-Wire Service Necessary With Gas

PENNSYLVANIA GAS and WATER Company

— IN THE BACK MOUNTAIN —

Telephone ENterprise 2-0668 TOLL FREE for information and service



- REGULAR SIZE PALMOLIVE SOAP 4 cakes 41¢
- BATH SIZE (FREE TOY TRUCK ATTACHED) PALMOLIVE SOAP 6 cakes 88¢
- REGULAR SIZE SOAP CASHMERE BOUQUET 3 cakes 31¢
- PRINCESS BRAND ALUMINUM FOIL 25 ft. roll 27¢
- (5c OFF DEAL) VEL POWDER large pkg. 29¢
- 12-OZ. (10c OFF DEAL) 55c VEL LIQUID (5c OFF DEAL) 22-oz. bottle 32¢
- DETERGENT (3c OFF) (10c OFF) (20c OFF) FAB large pkg. 31¢ giant pkg. 69¢ king pkg. \$1.11
- DETERGENT AD giant pkg. 77¢ (40c OFF DEAL) king pkg. \$1.85
- LAUNDRY OCTAGON SOAP 3 bars 35¢
- CLEANSER (2c OFF CAN) (3c OFF DEAL) AJAX 2 reg. cans 27¢ giant can 19¢
- AEROSOL FLORIENT DEODORANT (10c OFF DEAL) can 69¢
- LAUNDRY DETERGENT DYNAMO 19-oz. bot. 49¢ 36-oz. bot. 89¢ 1/2-gal. bot. \$1.49
- LIQUID (5c OFF DEAL) (10c OFF) (15c OFF) AJAX 15-oz. bot. 32¢ 28-oz. bot. 57¢ 44-oz. bot. 84¢
- LIQUID BUBBLE BATH SOAKY 10-oz. bottle 69¢
- CHLORINE BLEACH ACTION 11-oz. pkg. 39¢ 22-oz. pkg. 75¢
- DOG FOOD STRONGHEART 1-lb. can 10¢
- HARTZ MOUNTAIN DOG YUMMIES 6-oz. box 17¢
- MRS. PAUL'S SWEET POTATO PUFFS 1/2-oz. pkg. 33¢
- DOWNY FLAKE FROZEN WAFFLES 3 5-oz. pkg. 47¢

KLEIN'S CANDY

- MINT WAFERS
- SPANGLES
- GLIDERS
- COCOANUT HITS
- BREAK CHOCOLATE

6 3/4 oz. pkg. 29¢ Your Choice

VASELINE

WHITE PETROLEUM JELLY 8-oz. jar 49¢

BRACH'S

PEANUT CARAMEL CLUSTERS

8 1/4-oz. pkg. 39¢

COLGATE

REGULAR TOOTH PASTE

5-oz. tube 69¢

IDEAL LIGHT TUNA

RED BAND SOLID, 2, 6 1/2 oz. 63c
Green Band Chunk, 2, 6 1/2 oz. 57c
Green Band Chunk, 9 1/4 oz. 39c

PEPTO BISMOL

ANTIACID 4-oz. bot. 59¢ 8-oz. bot. 98¢
UNGENTINE FIRST AID SPRAY 2 1/2-oz. 98¢

GERBER'S

BABY FOOD

STRAINED JUNIOR

6 jars 65¢

6 jars 93¢

JUICE

3 4 1/2-oz. cans 29¢