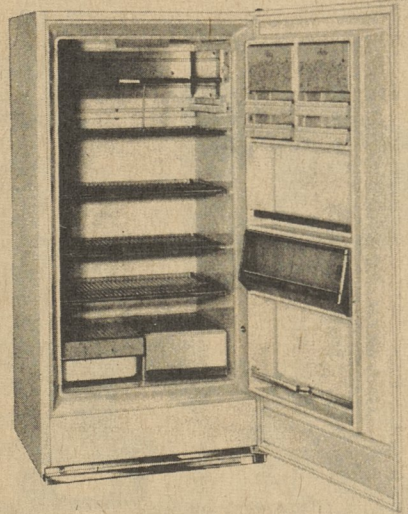


Puts an end to costly garage service calls, exasperating delays when time's awasting. Works on 6 or 12-volt batteries, complete with automatic circuit breaker, amp meter, and battery clips. 110-volt AC input. Reg. \$22.50.

NOW \$15.95

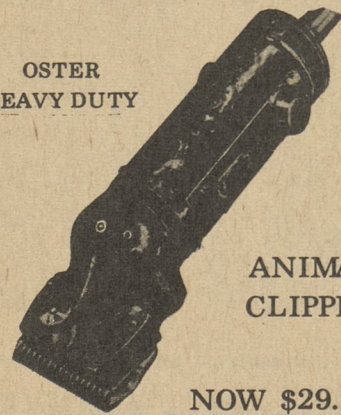


13 CU. FT.
FROST-FREE REFRIGERATOR

Frost-free—never needs defrosting. Big family-sized storage capacity with over 21-ft. of shelf area. Built-in dairy bar . . . full width fruit bin and large crisper bin. Reg. \$293.95.

NOW \$239.95

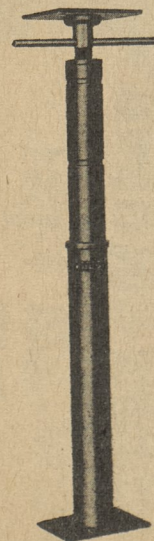
OSTER
HEAVY DUTY



ANIMAL
CLIPPER

NOW \$29.95

Model A-4 clipper for large animals. Exclusive unitary cutting assembly eliminates blade chatter, skin nicking, and hair-pulling. Powerful, precision, air-cooled 115-volt motor runs smoothly and quietly, doesn't frighten the animal. 3-in. cutting blade. Complete with 20-ft. cord. Reg. \$52.50.



RED-I-POST

This Golden Harvest buy will keep the roof over your head, or the floor under your feet. Self-lubricating bronze bearing adjusts from 5-ft. 8-in. to 8-ft. 4-in. Safe and easy to use in new construction or under a sagging cellar beam. Screw turns easily for installation and adjustment. Reg. \$9.25.

NOW \$6.95

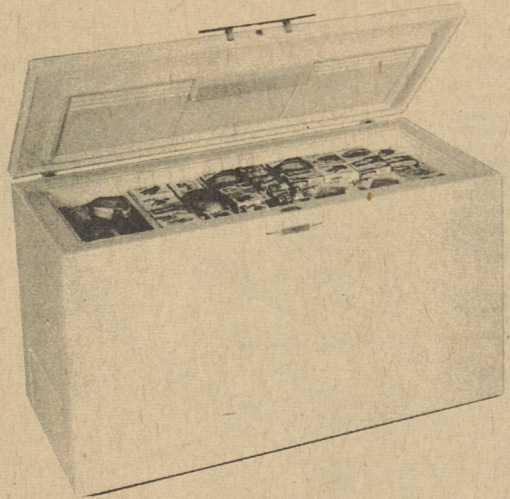
16-in. FAN and SHUTTER

Here's a Harvest Special that'll stir things up. Put one of these ventilating fans in your attic, small barn, or poultry house. Your electric meter hardly knows it's there. Shutters open when fan goes on, close when it shuts off, keeps out gusty winds. Reg. \$99.55.

NOW \$69.00

WATER HEATER
Glass lined for long, trouble-free service . . . 10-year warranty. White enamel is baked on the outer jacket of heavy gauge steel. Factory-calibrated thermostat delivers water at any temperature you desire between 120-170°. Reg. \$95.15.

NOW \$69.95



15 CU. FT. CHEST FREEZER

Store your own harvest securely in this bargain. Holds 529 pounds of good eating. It's 56-in. long, 36-in. high and 27½-in. wide. Basket and divider included. ¼ h. p. compressor with easy-to-adjust temperature control lets you go from 0 down to -20° for complete food safety. Reg. \$229.45.

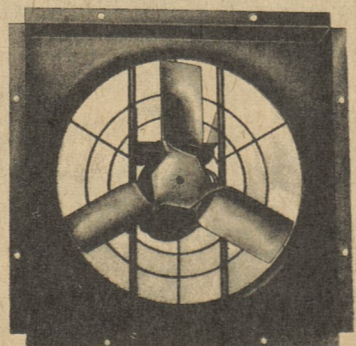
NOW \$195.00



MONKEY FACE GLOVES

Grab a pair of these rubberized gloves at this special price and you'll be ready to handle the grubbiest chores without dirtying a finger. 46-0019. reg. \$.58 pr.

NOW 42c pr.



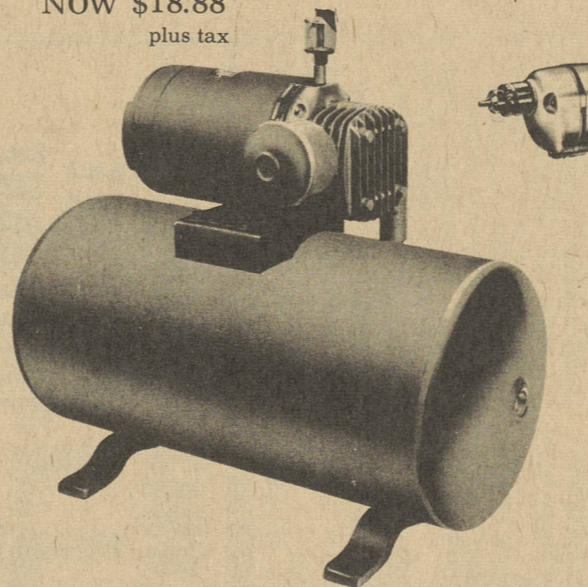
reds of saw-tooth edges give this tire more traction. Rugged shoulder bars dig in for greater pulling power. Nylon, 750 x 14", Black sidewall, 4 ply, Tubeless. All other popular sizes available. 24-0380. reg. \$27.95 plus tax

NOW \$18.88

plus tax

MOUNTED FREE

NOW \$18.88



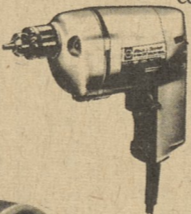
PERFECTION
VACUUM PUMP

The frost is on the pumpkin, and the value's in this Perfection Model 40TD. It's rated at 9 cfm, or up to three milker units. Comes complete with 12 gallon tank and ½ h. p. motor. Good? It's a Perfection. 85-0030. reg. \$149.50

NOW \$108.00

with trade-in

NOW \$3.95



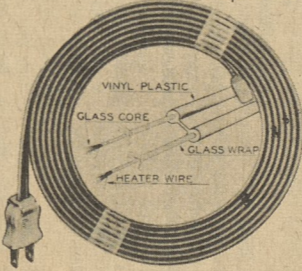
UTILITY PAIL
This Squire Applegate pail is just the thing to carry 10½ quarts of harvest home. It's light, because it's plastic. It's bright because it's yellow. Get two . . . it's always easier to carry a balanced load. Reg. 89 cents.

NOW 69c

1/4-in. DRILL

Save yourself hours of work on maintenance and repair jobs. Drives all the many B & D ¼-in. drill attachments for sawing, screw-driving, sanding. Reg. \$16.95.

NOW \$10.88



LINE-O-HEAT
HEATING TAPE

Beat winter to the punch this year with this Golden Harvest buy. Eliminate frozen water pipes or pumps with electrical heating tape. Safe, easy to install on regular house wiring. 12-ft. Heating Tape. Reg. \$3.45.

NOW \$2.25

ALL PRICES F. O. B. OUR STORE WHILE
PRESENT INVENTORIES LAST

Most Shotgun Shells — 20% Discount

1-12 ft. Starline Silo Unloader — Reg. \$1050. NOW \$850.

Exterior Paint (Latex Base) — ½ Price • Marine Paint — ½ Price

All Lawn Mowers 30% off • All Chain Saws 20% off

1½ H. P. Electric Motor — Reg. \$32. NOW \$25.

6 — Volt Fence Charger — Reg. \$13.95 NOW \$9.95

30 — Gal. Electric Water Heater — Reg. \$69.95 NOW \$35.00

20 — qt. Stainless Steel Milk Pail — Reg. \$27.95 NOW \$19.95

½" Heavy Duty Reversible Elec. Drill — Reg. \$54.95 NOW \$29.95

Thor Electric Grinder (Complete) — Reg. \$39.95 NOW \$29.95

All House Fans - ½ Price • 8-ft. Kitsen Poultry Waterers - Reg. \$15.50 Now \$7.75

235 lb. Asphalt 3-Tab Shingles — Reg. \$10.20 per sq.

1st Grade Only — No Seconds **SPECIAL \$6.98 per sq.**

Complete Line Black & Decker Power Tools — 20% off

Complete Line Galv. Steel Roofing & Accessories, check with us on these low prices

TUNKHANNOCK COOPERATIVE
G.L.F. SERVICE, INC.

Tunkhannock

Penna.

hang on to . . . when the urge to do something comes, to be able to 'hang on' just a little longer does the trick."

THE NURSES—If anyone had his doubts that a hospital is a dismal place he must have been convinced after watching the premiere show of "The Nurses."

Zina Bethume who plays the role of the student nurse is neither talented or beautiful. Her one big emotional scene of the evening was unconvincing and overacted.

Unless there is a big change it is hard to see how this show will make the grade especially against "Dr. Kildare" which gets a half-hour lead.

NEW TALENT—Ena Hartman has been signed to one of the first long-term talent development contracts for a Negro performer.

Miss Hartman, a fashion and photographers' model received a five-year contract from NBC. As with other successful applicants, she has had no experience in acting or other performing but impressed network officials with her potentialities.

She will take drama and vocal instructions with NBC paying the bills.

FARM & HOME



CALENDAR

EITHER BALED OR WAFERED—Dairy cows like their hay either baled or wafered and it makes little difference which, says B. S. Horne, Penn State agricultural engineering extension specialist. This was one conclusion from a study made at a midwestern university.

FALL FISHING—Often the best catches are made in the fall. There's no closed season on bass or bluegill fishing in farm ponds. New regulations permit the resident owner, his family, his employees and his tenants to fish for bass and bluegills the year-round, according to Bob Wingard, Penn State wildlife extension specialist.

FURNITURE BUYING—Before you rush out to buy new furnishings for your house, take time for a complete tour of the furniture stores, suggest Penn State extension home management specialists. There is more to choose from than ever before, and more furniture that does double duty in a variety of ways. Today's furniture comes in many new materials and finishes, and you'll find styles available in many price and quality levels. Looking at displays of new furniture can help you decide the style or styles you wish to live with.

KEEP APPLE QUALITY—Harvesting apples at the right stage of maturity does more to lengthen their storage life and prevent scale than artificial aids, says Carl S. Bittner, Penn State extension pomologist. Quality and appearance are also influenced by color of fruit, condition of trees, and kinds of containers used for storage.