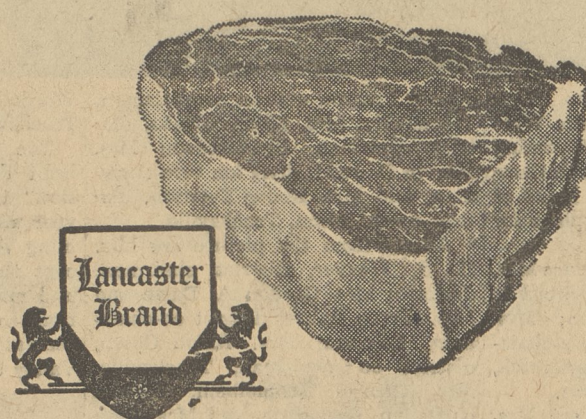


DOUBLE SAVINGS!



Lancaster Brand ROAST
BONELESS CHUCK lb. **57^c**

BEAUTIFULLY-FINISHED
HOSTESSWARE KITCHEN HELPERS
ON SALE THIS WEEK!
KNIFE SHARPENER
REG. \$1.00 VALUE ea. **69^c** (With Your Food Purchase)
CLIP COUPON "R" FOR EXTRA BONUS STAMPS!



Lancaster Brand Lamb Sale
GENUINE **LEG 0' LAMB** WHOLE OR RUMP HALF lb. **57^c**
SHOULDER CHOPS lb. **63^c** RIB CHOPS lb. **95^c** LOIN CHOPS lb. **\$1.09** SHOULDER ROAST lb. **43^c** LAMB BREASTS lb. **15^c**

OCEAN SPRAY CRANBERRY SAUCE
2 16-oz. cans **43^c** 2 7-oz. cans **25^c**
LANCASTER BRAND FRESH KILLED **FRYER PARTS**
LEGS lb. **43^c** BREAST lb. **49^c**

BEAUTIFUL SWISS WATCHES
By HERLIN
\$7.95 Plus Federal Tax and \$39.95 in CASH REGISTER TAPES
"Perfect For A Gift"

CENTER CUT CHUCK STEAK lb. **55^c**
ROUND BONE SWISS STEAK lb. **75^c**
TENDER TASTY CUBE STEAK lb. **99^c**
BONELESS BEEF CUBES LEAN lb. **69^c**
EXTRA LEAN GROUND BEEF lb. **69^c**
BREADED VEAL STEAKS FROZEN 2-lb. Lancaster Brand box **\$1.39**
SLICED BEEF WITH GRAVY FROZEN 5-oz. Lancaster Brand pkg. **29^c**
SLICED TURKEY WITH GRAVY FROZEN 5-oz. Lancaster Brand pkg. **29^c**

SEAFOOD DEPT.
SKINLESS **COD FILLET** lb. **39^c**
FANCY DRESSED **WHITINGS** 5-lb. box **89^c** lb. **19^c**
ARCTIC SEAL **FISH STICKS** 8-oz. pkg. **33^c** 3 pkgs. **89^c**
TASTE O' SEA **HADDOCK DINNER** each **49^c**

16 TEA BAGS FREE when you buy 48 **IDEAL FULL FLAVOR TEA BAGS**
Rich, brisk flavor that only comes from expert blending of the world's finest tea leaves!
you get **64** tea bags for only **55^c**

STAR-KIST TUNA
TRU-ADE DRINKS
RED KIDNEY BEANS
WHITE POTATOES
IDEAL PORK & BEANS
GRAPE PRESERVES

LIGHT CHUNK 2 6 1/2-oz. cans **61^c** SPECIAL!
ORANGE, GRAPE OR FRUIT PUNCH 4 46-oz. cans **99^c** SPECIAL!
IDEAL BRAND 2 No. 2 1/2 cans **39^c**
IDEAL WHOLE 2 No. 2 1/2 cans **39^c**
IDEAL PORK & BEANS 2 No. 2 1/2 cans **45^c**
IDEAL BRAND 24-oz. jar **39^c**

FAMOUS FOR QUALITY!
LOUELLA BUTTER (WHOLE OR QUARTERS) lb. **72^c**
RICHLAND BUTTER (WHOLE) lb. **70^c**

SALADA TEA BAGS
pkg. 16 **25^c** pkg. 48 **67^c** RED LABEL 1/4-lb. **43^c**

DAIRY DEPT.
NATURAL **SWISS CHEESE** bulk lb. **69^c**
SYLVAN SEAL **CREAM CHEESE** 8-oz. pkg., 29^c 3-oz. pkg. **12^c**
BORDEN **CHATEAU CHEESE** FOOD 2-lb. box **82^c** (7c OFF)
KRAFT **VELVEETA** 2-lb. box **83^c**

FROZEN FOOD
IDEAL CRINKLE CUT OR REGULAR **FRENCH FRIES** 5 9-oz. pkgs. **79^c**
IDEAL FRENCH OR CUT **GREEN BEANS** 4 9-oz. pkgs. **79^c**
IDEAL **GRAPE JUICE** 5 6-oz. cans **79^c**
ASSORTED **TIP TOP DRINKS** 6 6-oz. cans **69^c**

FEMS SANITARY NAPKINS
2 pkgs. 12's **69^c**

RAGU SPAGHETTI SAUCE
PLAIN OR WITH MEAT 15 1/2-oz. jar **39^c**
WITH MUSHROOMS 15 1/2-oz. 41^c
WITH MUSHROOMS 32-oz. **69^c**

BATH SIZE **PALMOLIVE SOAP** 3 cakes **44^c**
REGULAR SIZE SOAP **CASHMERE BOUQUET** 3 cakes **31^c**

KING SIZE, PKG. \$1.31
FAB DETERGENT large pkg. **34^c** giant pkg. **79^c**
DETERGENT **AD** giant pkg. **77^c** king size **\$2.25**

AEROSOL **FLORIENT** AIR FRESHNER can **79^c**
LAUNDRY DETERGENT **DYNAMO** 19-oz. bot. **49^c** 36-oz. bot. **89^c** 1/2-gal. bot. **\$1.49**