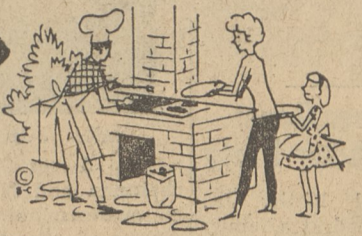


# STOCK-UP NOW



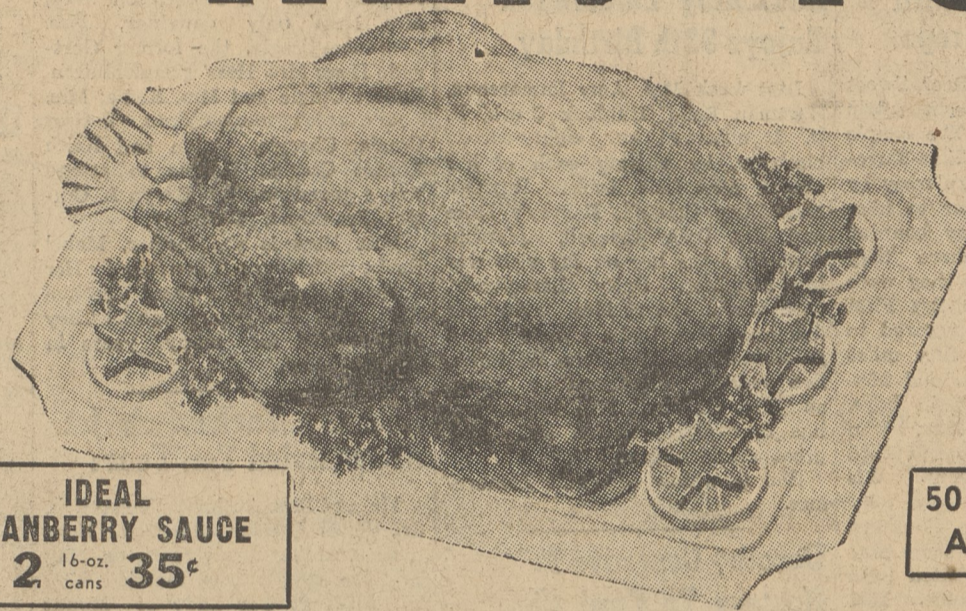
GRADE "A" BROAD BREASTED TENDER

## HEN TURKEYS

(10 TO 14 LB. AVG. WEIGHT)

lb. **39<sup>c</sup>**

Other Sizes Available At Below Regular Prices



IDEAL CRANBERRY SAUCE  
2 16-oz. cans **35<sup>c</sup>**

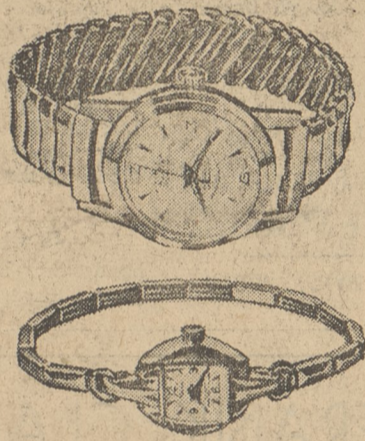
50 BONUS STAMPS WITH COUPON "G" IN THIS AD, AND PURCHASE OF ANY SIZE GRADE "A" TURKEY

**REGULAR STORE HOURS THIS WEEK!**  
REGULAR STORE HOURS MONDAY, MAY 28th  
**OPEN TUESDAY, MAY 29th 'TIL 9 P.M.**

**CLOSED MEMORIAL DAY**  
WEDNESDAY, MAY 30th

REGULAR STORE HOURS THURSDAY, FRIDAY and SATURDAY, MAY 31st, JUNE 1st and 2nd

### BEAUTIFUL SWISS WATCHES



By HERLIN  
**\$7.95**  
Plus Federal Tax and \$39.95 in CASH REGISTER TAPES  
"Perfect For A Gift"

MAKE ACME YOUR HEADQUARTERS FOR ALL YOUR OUTDOOR EATING AND PICNIC SUPPLIES!

- CHARCOAL BRIQUETS 10-lb. pkg. **69<sup>c</sup>** 20-lb. pkg. **\$1.19**
- GRILL-LITE CHARCOAL LIGHTER pint **25<sup>c</sup>**
- ARISTOCRAT COLOR PAPER PLATES pkg. 24 (9") **33<sup>c</sup>**
- FONDA KNOTTY PINE PAPER PLATES pkg. 70 (9") **98<sup>c</sup>**
- COLORED PAPER TABLE CLOTHS each **19<sup>c</sup>**

Acme Fresh-Ground **COFFEE** IN PICK-UP AND-GO BAGS!  
FREE BONUS COUPON WORTH 20 FREE BONUS STAMPS PACKED IN EVERY BAG

### FROZEN FOODS

- IDEAL WAFFLES (5-oz. pkg.) SPECIAL! **10<sup>c</sup>**
- IDEAL SPINACH (10-oz. pkg.) Leaf or Chopped
- ORANGE ADE (6-oz. can)
- LEMONADE (6-oz. can) EACH

**Sara Lee** A Royal Dessert  
ALL BUTTER POUND CAKE **69<sup>c</sup>**  
IDEAL SLICED STRAWBERRIES 3 16-oz. pkgs. **89<sup>c</sup>**

**SHASTA DIETETIC BEVERAGES** 3 12-oz. cans **29<sup>c</sup>**  
COLA, ROOT BEER, GINGER ALE, ORANGE, LEMON LIME, GRAPE AND BLACKBERRY

### SEAFOOD

- DELICIOUS "Chunkee" SHRIMP lb. **79<sup>c</sup>**  
SKINLESS COD FILLET lb. **39<sup>c</sup>**  
DRESSED WHITINGS lb. **19<sup>c</sup>**  
HALIBUT STEAK Center Cut lb. **59<sup>c</sup>**  
TASTE-O-SEA HADDOCK DINNERS ea. **49<sup>c</sup>**  
FISH STICKS Arctic Seal 8-oz. pkg. **33<sup>c</sup>** 3 pkgs. **89<sup>c</sup>**

BALLIET'S SALADS lb. cup **29<sup>c</sup>** asst.

Lancaster Brand 8 ALL BEEF STEAKS BUTTERED BEEFBURGERS CHEESEBURGERS

1/4-lb. pkg. **89<sup>c</sup>**  
8-oz. pkg. **43<sup>c</sup>**  
8-oz. pkg. **43<sup>c</sup>**

Lancaster Brand **FRANKS** lb. **49<sup>c</sup>**  
Serve On Virginia Lee Rolls

Lancaster Brand **RIB ROAST** "OVEN READY" lb. **59<sup>c</sup>**  
1st Cuts—Slightly Higher

BALA CLUB CANNED BEVERAGES ASSORTED FLAVORS

SPECIAL! 12 12-oz. cans **\$1.**

Farmdale **ICE CREAM** SPECIAL! 1/2-gallon pkg. **59<sup>c</sup>** ALL FLAVORS

IDEAL ICE CREAM SPECIAL! 1/2-gal. pkg. **69<sup>c</sup>**  
IDEAL ICE MILK 1/2-gal. pkg. **69<sup>c</sup>**

GREEN GIANT CRUSHED

**GOLDEN CORN** IDEAL RED  
**KIDNEY BEANS** IDEAL WHOLE  
**WHITE POTATOES** IDEAL  
**PORK & BEANS**

SPECIAL! 2 No. 303 cans **33<sup>c</sup>**  
BEST FOR LESS! 2 No. 2 1/2 cans **39<sup>c</sup>**  
BEST VALUE! 2 No. 2 1/2 cans **39<sup>c</sup>**  
BUY FOR LESS! 2 No. 2 1/2 cans **45<sup>c</sup>**

CHICKEN OF THE SEA GREEN LABEL, LIGHT CHUNK **TUNA** SPECIAL! 9/4-oz. can **49<sup>c</sup>** 2 6 1/2-oz. cans **61<sup>c</sup>**

- SALAD DRESSING IDEAL qt. jar **55<sup>c</sup>**
- CORNED BEEF LANCASTER 12-oz. can **49<sup>c</sup>**
- LUNCHEON MEAT LANCASTER 12-oz. can **39<sup>c</sup>**
- GRAPE PRESERVES IDEAL 24-oz. jar **39<sup>c</sup>**
- STRAWBERRY PRESERVES IDEAL 24-oz. jar **59<sup>c</sup>**
- PRINCESS WAX PAPER 2 100' rolls **39<sup>c</sup>**
- PRINCESS White NAPKINS or colored 2 pkgs. 80 **23<sup>c</sup>**
- PRINCESS ALUMINUM FOIL 25' roll **27<sup>c</sup>**
- WHITE MARSHMALLOWS Virginia Lee 14-oz. bag **25<sup>c</sup>**

ACME Virginia Lee bakes for your pleasure! ACME  
Supreme Plain, Iced or Old Fashioned **RAISIN BREAD** loaf **29<sup>c</sup>**  
Virginia Lee Streusel **CHERRY PIE** SPECIAL! each **49<sup>c</sup>**  
**FARMDALE BREAD** 2 loaves **37<sup>c</sup>**  
**BROWN-N-SERVE ROLLS** pkg. **19<sup>c</sup>** **LEMON DONUTS** pkg. **41<sup>c</sup>**  
**DANISH PECAN RING** ea. **49<sup>c</sup>** **BANANA LOAF CAKE** ea. **25<sup>c</sup>**

BORDEN'S OR KRAFT **AMERICAN LOAF CHEESE** 2-lb. box **95<sup>c</sup>**  
**IDEAL SHARP CHEESE** (bulk) lb. **65<sup>c</sup>**  
SYLVAN SEAL CREAM CHEESE 8-oz. pkg. **29<sup>c</sup>** IDEAL SLICED CHEESE WHITE AMERICAN 12-oz. pkg. **45<sup>c</sup>**

FINEST QUALITY **Lowella BUTTER** WHOLE OR QUARTERS lb. **72<sup>c</sup>** RICHLAND BUTTER (whole) lb. **70<sup>c</sup>**

- SHORTENING **SWIFT'NING** 3-lb. can **71<sup>c</sup>**
- PKG. 80 (12c OFF) 86c
- BOSCUL TEA BAGS** (BUY 48 16 FREE) pkg. **64<sup>c</sup>**

- FIESTA PUNCH OR **WELCH'S WELCHADE** 2 32-oz. cans **65<sup>c</sup>**
- SHORT SLEEVE, WASH-N-WEAR **MEN'S SHIRTS** ea. **\$2.49**

- SUNSHINE **HYDROX COOKIES** 2 16-oz. pkgs. **89<sup>c</sup>**
- SALISBURY STEAK W/MUSHROOMS OR, (Your Choice) **KREY BROWN GRAVY** With Beef 13-oz. can **49<sup>c</sup>**

- CONCENTRATED **REYMERS BLEND** 22-oz. bot. **69<sup>c</sup>**
- PFEIFFER **COLE SLAW** DRESSING 12-oz. bot. **39<sup>c</sup>**