

**Birthday Anniversary**

Today, April 19, is the birthday anniversary of the late Dr. Sherman Schooley, beloved physician. He would have been 62 years of age today.

No matter how strong he feels the rest of the year, a end of the Christmas season always finds dear old Dad well spent.

Some people are easily entertained. All you have to do is sit down and listen to them.

SUBSCRIBE TO THE POST



**STAY ON THE INSIDE**  
of a Close Corporation. For information on how to buy the key executive's stock through life insurance.

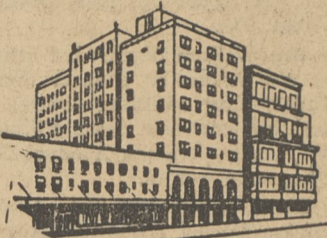
phone . . . write . . . visit

**Peter Kaye**  
76 Midland Drive

Dallas, Pa. Phone OR 4-8671  
**NEW YORK LIFE INS. CO.**

Life Insurance • Group Insurance • Annuities • Health Insurance  
• Pension Plans •

**GREENWALD'S**  
**IN LUZERNE** ONE STOP SHOPPING CENTER  
FURNITURE • GIFTS • HOUSEWARE

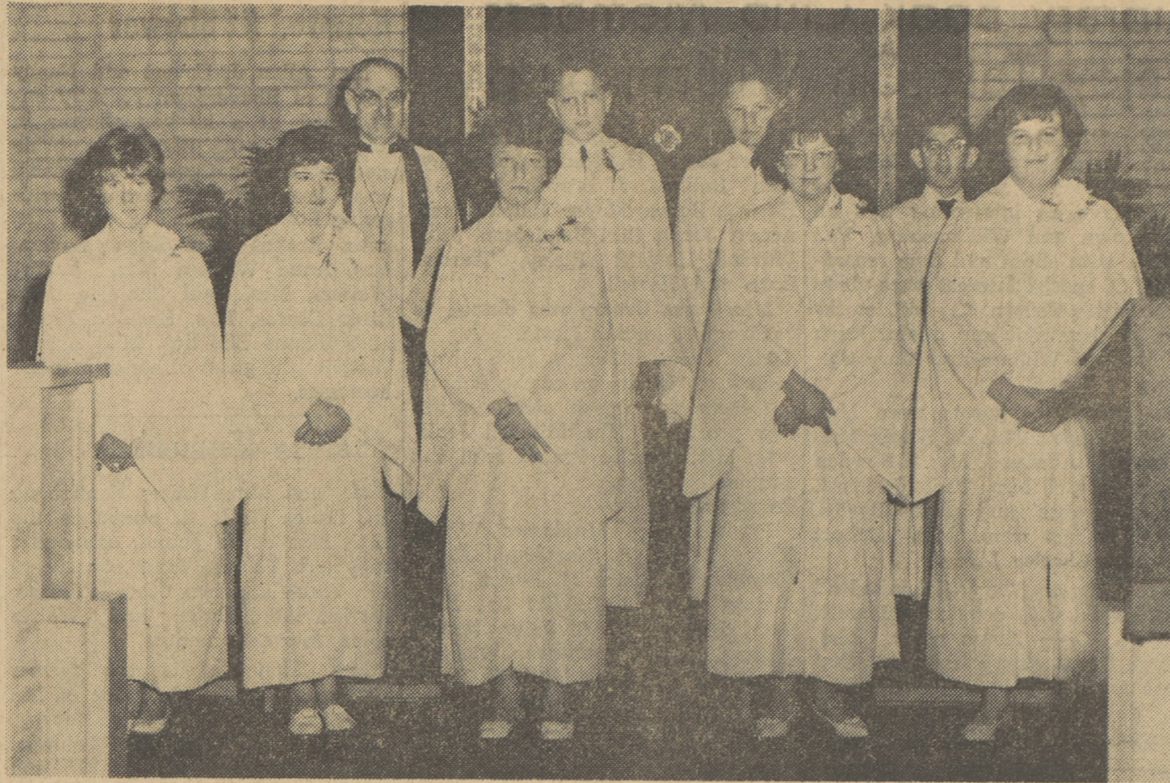


**HOTEL JEFFERSON**  
ATLANTIC CITY  
NEW JERSEY

Central location overlooking Boardwalk and convenient to Piers, Churches and Theatres — Near Rail and Bus Terminals — Inviting Lobbies and Parlors — Closed and Open Sun Decks Atop — All Rooms Delightfully Furnished — Modified and European Plans — Conducted by Hospitable Ownership Management that delights in catering to the wishes of American Families. Write for Literature and Rates

**Hotel Jefferson**  
Atlantic City, New Jersey

**Confirmation Class At St.Pauls**



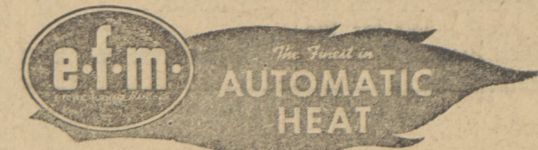
Robed in white, five girls and three boys were confirmed on Palm Sunday at St. Paul's Lutheran Church in Shavertown. Administering the age-old rite of confirmation was the pastor, Rev. Frederick H. Eidam. Mrs. Sophie Hackling made

the white broadcloth robes, and confirmands wore white carnations as corsage or boutonhole bouquet. Confirmation came after twenty-six weeks of instruction, the group meeting each Saturday morning. Reading from left to right, front

row, are: Donna B. Priebe, Valerie Lee Mallin, Betty Joyce Rome, Linda Sue Ell, and Patricia Bauman. Second row: Pastor Eidam, Edward Bruce Trexler, Carl Albert Zimmerman, and Russell Daniel Gula.

Photo by Kozemchak

Maybe the world situation isn't so threatening after all. Construction firms will give you five years to pay for fallout shelters. A government that is big enough to give you everything you want is a government big enough to take everything you've got.



**COMFORT CONVENIENCE AND ECONOMY WITH e.f.m. AUTOMATIC DIRT & DUST FREE HEATING**

Let us install highest quality automatic heat in your home at low cost

FREE ESTIMATES ON OIL • COAL • GAS FURNACE OR BOILER BURNER UNITS

5 year terms — No Down Payment

**MONK PLUMBING and HEATING**

SHAVERTOWN, PA.

— Orchard 4-5816 —

**Teen-Age Baseball Practice Saturday**

Teen-Age Baseball players will practice Saturday at 2:30 in the practice lot, East Dallas.

**Hikers To Meet**

Wyo-Hanna Chapter of the National Hikers and Campers Association will conduct a Family Campers' Clinic from 1 p.m. to 9 p.m. on Saturday, April 28 and from 1 p.m. to 4 p.m. on Sunday, April 29 in Kirby Park, Wilkes-Barre-Kingston. The Camping equipment to be displayed will include stoves, lanterns, coolers, air mattresses, sleeping bags, tents, a Nimrod Tent Trailer, and a Scotty Travel Trailer. There will also be a conservation display by a Berwick 4-H group and an Indian Teepee by Explorer Scouts from Wyoming. For women, there will be a demonstration of open fire and camp stove cooking. The public is cordially invited and all questions on family camping, equipment and costs will be answered.

**Too Late To Classify**

**TOP SOIL — FILL — TOP SOIL**  
Regular and Screened Complete Excavating Facilities for CELLARS, WATER LINES, SEPTIC TANKS & GRADING — By Contract or Hourly — For Free Estimate Call HOOVER & MILBRODT OR 4-2494 OR 4-2498

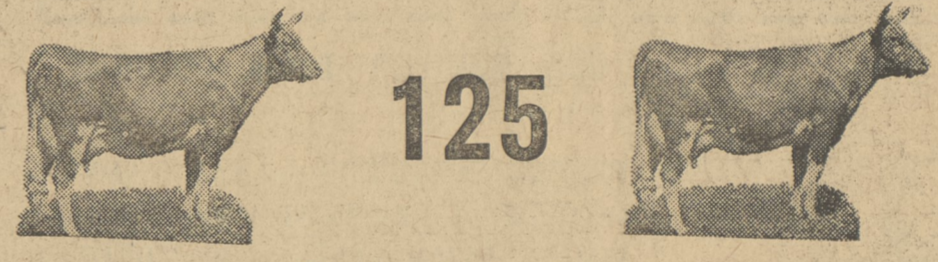
**ALL DAY PUBLIC SALE**

In COLUMBIA COUNTY, 15 Miles North of Bloomsburg, 3 Miles Southeast of Benton, 2 Miles East of Stillwater, Pennsylvania. FOLLOW SALE ARROWS

**SATURDAY, APRIL 28, 1962 — 9:00 A. M.**  
LUNCH ON THE GROUNDS

**4 FARMS, Totalling 906 ACRES**

- FARM No. 1 - 250 ACRES** — Mostly level tillable land. Fertile Soil. 3 FRAME HOUSES, LARGE BANK BARN with wing attached, 14 x 36 Concrete Stave SILO. Another Bank Barn, Lot of Turkey Buildings, 2-Story Chicken House, 2 Streams, Large Farm Pond. Houses are in excellent condition and have all conveniences.
- FARM No. 2 - 247 ACRES** — EQUIPPED FOR DAIRY. Large Brick and Tile DAIRY BARN with 60 Comfort Stalls and Box Stalls, 3 Large SILOS, also Large MILK HOUSE, Heated Calf Barn Maternity Barn, Etc. 3 HOUSES — All Conveniences. 2 Small Streams. Also Hay Barn, Corn Cribs. This Farm adjoins Farm No. 1.
- FARM No. 3 - 134 ACRES** — EQUIPPED FOR POULTRY. Will handle 5,000 Layers and 20,000 Broilers. 3 Houses, Orchard, etc.
- FARM No. 4 - 275 ACRES** — FRAME HOUSE and HAY BARN. Mostly tillable land. A Real Grain Farm. Number 4 is about 2 miles from the other unit. Nearly all Tillable Land. TERMS — 10% Down Sale Day. Immediate possession can be had upon payment of an additional 10%. Final settlement April 1, 1963. These are good farms, but will sell at your own price as they are selling out of season. Must be sold due to owner's health. FARMS SELL AT 10:00 A.M. ALSO SELLING IS —



**125**

Registered & Grade Certified Bloodtested, Vaccinated & TB Accredited

**GUERNSEYS** — This is one of Pennsylvania's highest producing herds to be sold anywhere this year. The herd is headed by an outstanding WYNO BELLE BUTTERFAT BULL, his Dam Clearhearts Dainty (V.G.) has many real records, one of 16,916 Milk, 929 lbs. Fat in 305 Days. The Junior Herd Sire is from a Cow with 20,138 Milk, 948 lbs. Fat.

**54 COWS — 28 BRED HEIFERS 41 OPEN HEIFERS and CALVES — 2 BULLS**

Cows selling with many high records. Herd is on H. I. R. testing. A group of Very Outstanding Bred Heifers. This herd will suit the most discriminating breeder and will add life to any herd. Unusual large size, beautiful udders, excellent producers. All sell regardless of price. Also selling is ALL MODERN FARM EQUIPMENT and TOOLS.

**Farmall 400 — 350 Diesel and 3 Farmall M. Tractors**  
One is Super M, all fully equipped. 4-Row Cultivator, 4-Row Corn Planter, 3-Bottom Trip Back Plow, 4-Bottom Rubber-Tired Pull-Type McCormick Hydraulic Plow. 2 McCormick No. 40 P. T. O. Spreaders, one mounted on a truck.

**Hay Crimper — 55 T Baler — Large Elevator**  
36 foot Kings Wise Bale Elevator, New J. D. Crimper, Stalk Cutter, 2 - 16 Hoe Grain Drills, 5-Bar McCormick Pull-Type Hay Rake on rubber, 2 - 3-Section Spring Tooth Harrows, Cultipacker, 7 foot Fast-Hitch McCormick Mower, Small Grain Elevator, McCormick Corn Harvester.

**12 ft. Combine — New 2 MH Mounted Picker**  
McCormick Self-Propelled Combine with Grain Tank, Compicker is late Grease Well type, 1 Ton Kelley Duplex Feed Mixer, New John Deere Hammer Mill, 3 Silage Wagons with false end gates, Grove Self Unloading Unit, Manure Loader for a Farmall M, Steam Cleaner, McCormick Lime and Fertilizer Broadcaster.

**No. 5 McCormick Fiall Chopper**  
Shop Tools, Turkey Equipment, 100 DUCKS, 12-Can Milk Cooler, Lot of Milk Cans, 4-Unit Surge Milker, 4 Stainless Steel Units, 20 feet of Silage, and many other articles.

— — — Sale Managed by the — — —  
**SANGER LAND AND CATTLE NATIONWIDE AUCTION CO.**  
Paul E. Sanger, Mgr. & Pedigrees—Phone UN 64725, Myerstown or Bloomsburg 784-3200  
**MAYWOOD FARMS** CARTER BACHE, JR., Manager  
CARTER BACHE, Owner

**HOP**

IN — and

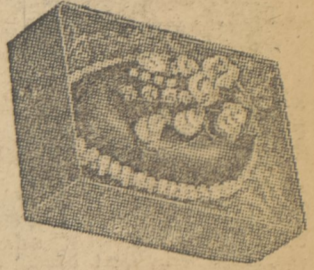


**SHOP for EASTER**

FRESH—DELICIOUS  
Helen K. Salsburg

**CANDY**

**EASTER EGGS**



- COCONUT
- FUDGE
- BUTTERCREAM
- FRUIT and NUT



**TOYS**

STUFFED ANIMALS  
Mechanical TOYS

**CHOCOLATE**

BUNNIES  
DUCKS  
SMALL EGGS  
NESTS  
BASKETS



JELLY BEANS

BEAUTIFUL FILLED BASKETS



Cellophane Covered \$3.50 Up

SCENTED CANDLES  
CARDS  
NAPKINS  
PLANTERS

Gift Wraps

**Back Mt. Lumber and Coal Co.**  
GIFT SHOP

**EASTER**

There's something very special about Easter Sunday! Hearts are lighter, eyes brighter, friendships warmer, family life closer, as all step out in the "Easter Parade" to and from church . . . experiencing anew the deep and abiding happiness of this most joyous day!

*Fanny Farmer*

CANDIES . . . of matchless flavor



Sure to be a favorite in every Easter Basket . . . are the many Fanny Farmer specialties we're featuring. Chocolate Easter Bunnies, pure buttercream golden yolk Easter Eggs . . . Miniature Bunny Boxes, chocolate-covered Marshmallow Eggs . . . and a delightful combination box of bunny and Eggs!

**EVANS DRUG STORE**  
SHAVERTOWN

"Next To The Postoffice—And Just As Reliable"