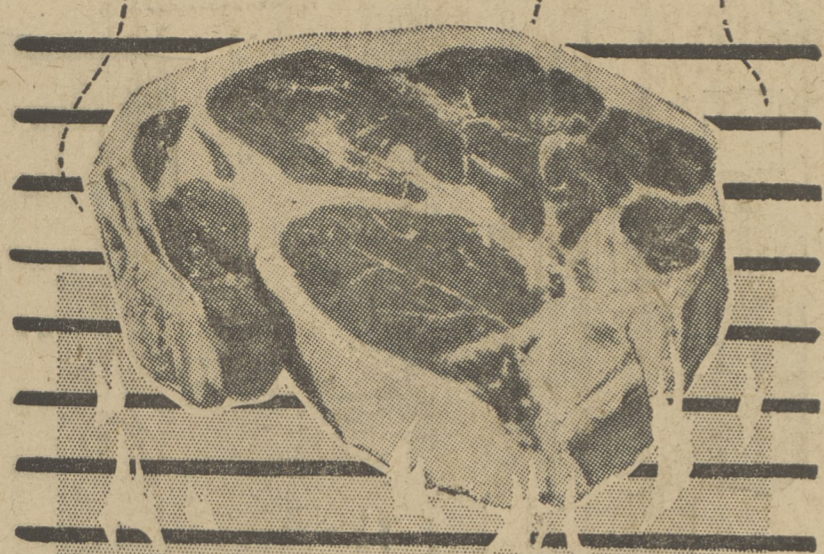


A&P IS FULLY STOCKED WITH A TASTE-CHEERING VARIETY OF DEPENDABLE VALUES - RIGHT NOW -

FOR THE 1st, 2nd 3rd & 4th OF JULY!



TENDER, JUICY SUPER-RIGHT QUALITY STEAKS

Sirloin, Porterhouse and Rib 7-IN. CUT

75^c Lb. NONE PRICED HIGHER!



PRICES IN THIS AD EFFECTIVE THROUGH MONDAY, JULY 3, IN ALL A&P SUPER MARKETS IN DALLAS & VICINITY.

STEAK SAUCE DAWN'S BRAND WITH MUSHROOMS 5 1/2-Oz. Jar **10^c**

Store Hours Next Week!
All A&P Super Markets
Will Remain **9 P.M.**
Open Until
MONDAY, JULY 3

Closed Tuesday, July 4th
Regular Store Hours
Wednesday thru Saturday
All A&P Stores Will Observe
Regular Store Hours This Week

Stock Up for the Holiday on... Bread, Rolls, Cigarettes, Candy, Fresh Milk, Extra Meats, Poultry, Fresh Produce.

SUPER-RIGHT, TENDERED, SMOKED (SHANK PORTION) (BUTT PORTION) (FULL SHANK HALF) (FULL BUTT HALF)

HAMS Lb. **27^c** Lb. **37^c** Lb. **39^c** Lb. **49^c**

WHOLE HAM lb. 43c ★ CENTER HAM SLICES lb. 98c NO SLICES REMOVED FROM A&P'S FULL HALF HAMS

OUR FINEST QUALITY
TURKEYS
16 to 22 Lb. Avg. **33^c** READY TO COOK

SUPER-RIGHT SKINLESS, SHANKLESS, DEFATTED... FULLY COOKED
Semi-Boneless Hams WHOLE OR HALF Lb. **65^c**
SUPER-RIGHT **SKINLESS FRANKS** 2 Lb. Bag **89^c**
SUPER-RIGHT **SLICED BOILED HAM** 1-Lb. Pkg. **95^c**

DOMESTIC CANNED **HAMS**
9 to 11 Lb. Avg. **65^c**
Lb. **5** Can **\$3.59**
Imported Canned **Hams** 3 Can **\$2.59**
Canned **Picnics** 4-Lb. Can **\$2.39**

QUAKER BRAND
FRESH SALADS
BAKED BEANS, CREAMED CABBAGE, OLD FASHIONED SLAW, FRUITED JELLO, MACARONI SALAD, PEPPER HASH, POTATO SALAD, RICE PUDDING, COLE SLAW, HEALTH SALAD AND CUCUMBER SALAD. Lge. Plastic Cup **29^c**

FRESH CUT-UP FRYING CHICKEN PARTS WINGS **23^c** LEGS **39^c** BREASTS **49^c** FISH AND SEAFOOD BUYS FANCY

GROCERY VALUES FOR THE FOURTH!

HI-C FRUIT DRINKS
ASSORTED FLAVORS 12-Oz. Can **10^c**

Ripe Olives CONTADINA BRAND 4 9-Oz. Cans **89^c**
Frank's Canned Beverages 6 12-Oz. Cans **49^c** Case **\$1.89**
Plumrose Canned Hams 2 1-Lb. Cans **\$1.89**
Whole Chicken BLUE STAR CANNED 3 3 1/2-Lb. Cans **79^c**
Lang's Fresh KOSHER DILLS 1/2 Gal. **39^c**
Jif Peanut Spread 18-Oz. Jar **55^c**

Candy Bars Popular 5c Varieties Carton of 24 **89^c**
Chewing Gum Popular 5c Varieties Carton of 20 **69^c**

Pretzel Sticks or TWISTS Mrs. Smith's 16-Oz. Pkg. **29^c**
Red Pistachio Nuts 1-Lb. Pkg. **89^c**
Baroness Fresh CUCUMBER CHIPS 15-Oz. Jar **19^c**
Candied Dill Sticks Dolly Madison 16-Oz. Jar **33^c**
Candied Sweet Chips Dolly Madison 16-Oz. Jar **29^c**
Alcoa Aluminum Wrap 25-Ft. Roll **29^c**
Maxwell House Instant Coffee (Off) 10-Oz. Jar **1^c**
Crispo Cookies ASSORTED VARIETIES 8-Oz. Pkg. **19^c**
Sultana Whole GREEN BEANS 2 15 1/2-Oz. Cans **29^c**
Charcoal Briquets 10-Lb. Bag **69^c** **1^c**
Charcoal Lighter Can **33^c**



SWEET, JUICY... BING

CHERRIES Lb. **39^c** NONE PRICED HIGHER!

FRESH, RIPE **PEACHES** 4 Lbs. **35^c**

Sweet Corn 10 ears **69^c**

SEEDLESS GRAPES Lb. **29^c** Calif. Oranges SWEET JUICY Doz. **49^c**
LEMONS Large Size Doz. **49^c** Green Onions OR CELLO RADISHES 2 For **15^c**

JULY WOMAN'S DAY NOW ON SALE - ONLY 10c

HAWAIIAN PUNCH REGULAR OR SUNSHINE YELLOW 3 46-Oz. Cans **95^c**
SENECA APPLE ADE 3 Quart Cans **55^c** GRAPE DRINK 3 Quart Cans **79^c**
WORTHMORE CIRCUS PEANUTS 14-Oz. Pkg. **29^c** 19-Oz. Pkg. **39^c**

THE GREAT ATLANTIC & PACIFIC TEA COMPANY, INC.
A&P Super Markets
AMERICA'S DEPENDABLE FOOD MERCHANT SINCE 1859

| | | | | | | | |
|---|--|---|---|--|--|---|---|
| EATWELL GRATED TUNA 2 6-Oz. Cans 39^c | CLAPP'S BABY FOOD (STRAINED) 9 Jars 85^c | Maxwell House Instant Coffee 6-Oz. JAR 95^c Atmore Tasker Mince Meat 28-Oz. JAR 49^c | THREE LITTLE KITTENS CAT FOOD 6 15-Oz. Cans 79^c | BORDEN'S INSTANT COFFEE 5-Oz. Jar 79^c | DASH DOG FOOD 6 1-Lb. Cans 95^c | | |
| CRISCO SHORTENING (1-Lb. Can) (3-Lb. Can) 37c 95c | FLUFFO GOLDEN SHORTENING 3-Lb. Can 89^c | SUPEROSE SWEETENER 8-Oz. Size 69^c | SPRY LIGHT SHORTENING (3c OFF) (5c OFF) 14-Oz. Can 34^c 42-Oz. Can 90^c | LYSOL (SMALL) (MEDIUM) 29^c 59^c | WISK LIQUID DETERGENT Qt. HALF GAL. 73c \$1.41 | SWAN LIQUID DETERGENT (12-Oz.) (22-Oz.) 37c 65c | AIRWICK HOUSEHOLD DEODORANT SPRAY MIST 6-Oz. Size 59^c 5 1/2-Oz. Size 79^c |

MEDIUM SHRIMP
31 to 42 Per Lb. **Lb. 69^c** (5-Lb. Box) **\$3.39**

FRESH (CLAWS) (REGULAR)
Crab Meat 1-Lb. Can **79^c** 1-Lb. Can **89^c**
Fresh Backfin CRAB MEAT 1-Lb. Cpn **\$1.49**
Lobster Tails 4 to 6 Per Lb. **\$1.49**
Little Neck Clams 3 Doz. **98^c**
Hard Shell Crabs MEDIUM Ea. **29^c**
CRABS AVAILABLE IN MOST STORES

FROZEN FOOD VALUES
Lemonade PACKER'S BRAND 5 6-Oz. Cans **49^c**
A&P Orange Juice 5 6-Oz. Cans **89^c**
Breaded Shrimp Cap'n John 10-Oz. Pkg. **49^c**
Fried Shrimp Cap'n John 7-Oz. Pkg. **59^c**
Cap'n John Peeled and Deveined Shrimp 10-Oz. Pkg. **89^c**
Banquet Pies Chicken, Beef, Turkey 5 8-Oz. Pkgs. **99^c**
Banquet Chicken, Beef and Turkey Dinners 10-Oz. Pkg. **53^c**