

## Seniors Average in Math, Grammar; Low In Reading, Spelling, Words

Pennsylvania high school seniors are smarter than average in mathematics and grammar but definitely not superior in reading, vocabulary and spelling.

These are the confusions from results of tests given last fall to 17,000 seniors in 118 state high schools, representing a sampling of the 100,000 students expected to graduate next June.

Measured against the national average for high school seniors, the Pennsylvanians were high in mathematics reasoning, mathematics fundamentals, and the mechanics of English.

But they lagged well behind in reading comprehension, reading vocabulary and spelling.

More than half the seniors tested for vocabulary and reading comprehension could not score above the national eleventh grade level, (9,000 or 52%)

Spelling was worse. Over 12,000 seniors (70%) could not spell as well as the average eleventh grader.

In mathematics fundamentals, however, 52 percent of the seniors were on a par with the average college freshmen and nearly half were at that level in mathematics reasoning.

Some 41 percent scored at the college level in English grammar with 49 percent doing as well as the average college sophomore in punctuation and capitalization.

At least one-fourth of the 12th-grade students tested fell below the national level by at least two years in all six areas. The top quarter scored above the college sophomore level in reasoning and above the college junior level in mathematics fundamentals.

The tests were given by the Department's Division of Guidance and

Testing as part of a three-year curriculum revision study. A complete report on the findings will be released shortly. It is expected to include regional comparisons and differences in size of high school.

Reading and spelling as such are not usually taught in Pennsylvania high schools, but the Department has recommended that some form of instruction be given at the high school level.

In 1959 state-mandated courses in developmental reading were put into the seventh and eighth grade curriculum, but results are not yet evident among senior high school students.

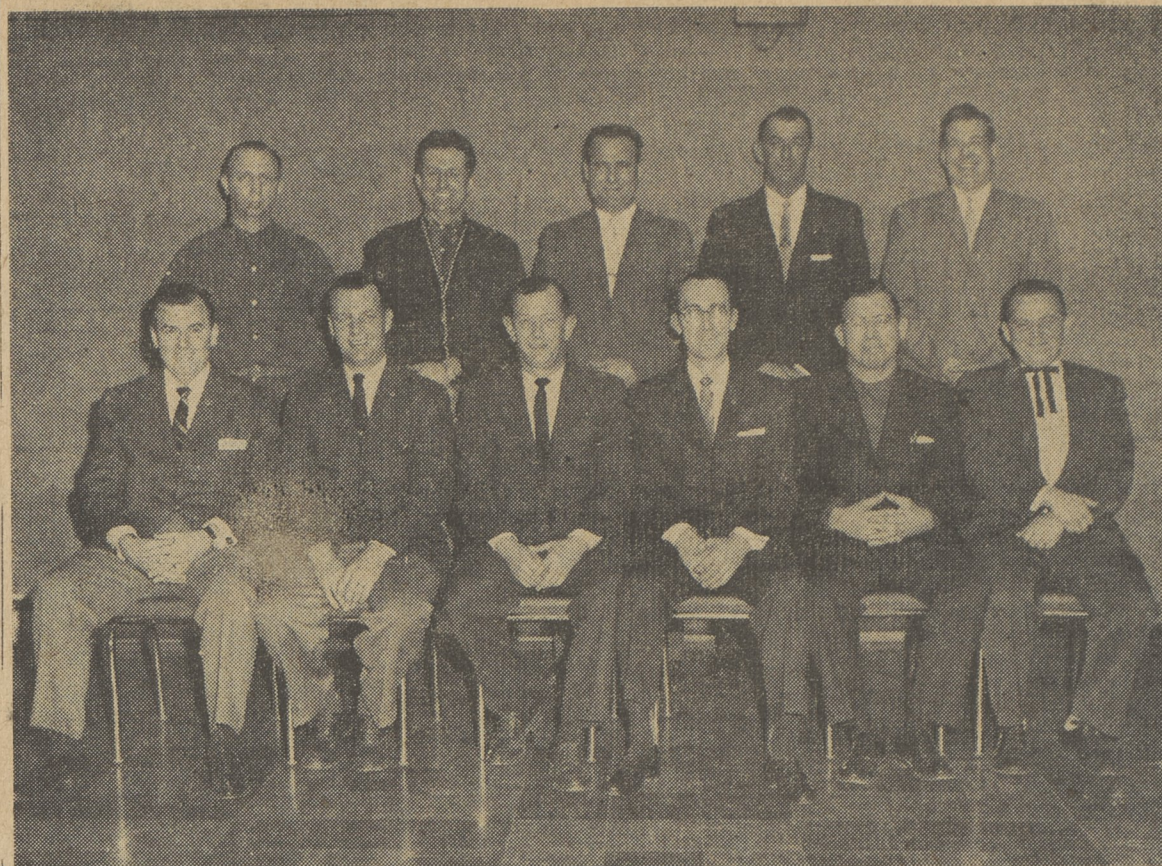
### Double Birthday Party Held At Hadsel Home

A birthday dinner honoring Martha Hadsel, Franklin Street, Dallas, and Mrs. Edward Parrish, was enjoyed by relatives at the Hadsel home on Tuesday, February 21. Present were Mr. and Mrs. Edward Parrish, Mrs. Herbert Updyke and sons, Robert, John, David, Mrs. Kenneth Calkins, Judy, Linda, Randy, Bess Cooke and Miss Hadsel.

### Valentine Dinner

Mrs. Fred Dodson was hostess to the Joy Class at a Valentine dinner, February 14. Guests were Mesdames Allan Brace, Stanley Gardiner, Russell Transue, Donald Daubert, Charles Husband, Jack Birstock, Robert Shaver, Thomas Landon, Joseph Ruch, William Baldwin, Joseph Vaskas, Harry Swepshausser, Wilson Maury, Basil Frantz, James Cooke, Gomer Elston, Gerald Elston, Corey Besteder, and Madeline LaBarre.

### Legion Committee Plans St. Patrick's Day Party



The annual St. Patrick's Day Party is one of the highlights of the year for Daddow-Isaacs Post No. 672 American Legion. This year it will be held on Saturday March 18 beginning at 8.

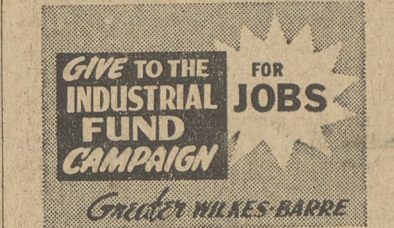
A gala affair is planned and there will be novelties, entertainment and refreshments for all. Tickets can be purchased from the committee composed of:

Left to right; seated: Edward Buckley, Richard Staub, Bernard McDermott, chairman, George Cave, William O'Brien, Commander; Thomas Kane; second row: Leonard Harvey, president of the Home Association; Thomas Reese, Richard Fuller, Daniel Gula and Lester Fink.

### Play-off Tickets On Sale Locally

Tickets for the Westmoreland-West Hazleton PIAA Class A play-off game, Wednesday, March 8, at Scranton CYC are on sale at the following places: Dixon's and Orchard Farm Restaurants, Dallas; Forty Fort Dairy Bar, Fernbrook; Evans Drug Store, Shavertown; Gavy's Market, Trucksville and the Senior and Junior High Schools.

The business establishments will sell Adult tickets only, while the schools will handle both adult and student tickets. Any person desiring to make the trip to Scranton by bus may make reservations by phoning the Senior High School, OR 4-6386. The deadline for reservations is Tuesday at 4 p. m.



### Ashley Hits Century Mark In Downing Lake-Lehman 104-74

Ashley Rockets became the second team in North league and Wyoming Valley this season to go over the century mark. Ashley performed this feat on the Lake-Lehman floor Tuesday night with a 104-74 win over the Knights.

Eighteen of the twenty-one players entered the scoring column in the high scoring affair between the two teams.

**Big First Half**  
Ashley jumped into a 26-16 lead in the opening period and continued its torrid shooting in the second quarter to build up a commanding 56-29 half-time lead, which proved to be the deciding factor.

Both teams showed fine shooting percentages in the second half as they battled on even terms with Ashley gaining a 48-46 edge.

**In Double Figures**  
Each team had four men in double figures, with White's 23 high for the Rockets and Rogers 19 high for the Knights.

Si Jablonski used his entire 11-man squad, with ten scoring. Others in double figures for Ashley were: Buckland 19; Partilla 18 and Sura 11. Other high scorers for Lake-Lehman included Rusiloski 12 and Norwig and Parsons 10 each. Ashley displayed some fine foul

shooting, dropping 20 of 25 free throws.

Player	g	f	pts.
Ashley	10	3	23
Zapotok	0	0	0
Partilla	8	2	18
Grohowski	1	0	2
Buckland	6	7	19
Czarnetski	1	2	4
Roche	4	1	9
Lacorte	2	2	6
Koblicka	1	2	4
Zardecki	4	0	8
Sura	5	1	11
	42	20	104

Player	g	f	pts.
Lake-Lehman	4	2	10
Norwig	0	0	0
Krupa	0	0	0
Rogers	9	1	19
Gray	3	0	6
Houlliston	3	0	6
Parsons	2	6	10
Morningstar	4	0	8
Palmo	1	2	4
Rusiloski	5	2	12
Gardecki	0	0	0
	31	13	75

Fouls tried Ashley 25, Lake-Lehman 21. Officials—Hardy and Ostrowski.

### Westmoreland New Champions

#### Replace Swoyersville As League Champs

Westmoreland Mountaineers copped their second North League Championship in four years Tuesday night by downing Fairview, 81-44 on the losers floor.

The Mountaineers replaced last year's champions, Swoyersville.

Two years ago Westmoreland captured laurels and entered Class B play-offs, advancing to the Eastern finals before bowing to Kutztown, State Champs.

This year Westmoreland has elected to participate in Class A competition despite being a Class B school. **Slow First Half**

Despite poor shooting in the first period, Westmoreland held a 15-11 lead and in the second quarter showed a little better percentage from the floor as it upped the lead to 33-22 at half-time.

The shooting of Gauntlett and Evans helped the Mounts to take the eleven point half-time lead. Trewhorn having a slow first half netted but three points.

**Flashes Old Form**  
Trewhorn and Westmoreland both showed signs of old form in the second half as they outscored Fairview 48-22.

With Trewhorn accounting for 20 points in the second half along with the steady scoring of Gauntlett and Evans, Westmoreland built up a 54-33 lead going into the final period, and finished strong, tallying 28 points.

Gauntlett and Trewhorn both finished the game with 23 points, while Evans collected 20.

Sauerwine with eight goals for 16 points was the only threat for Fairview.

The win was the 16th straight for Westmoreland, including two exhibition wins.

**Team Entertained**  
On return from Fairview, the Mountaineers were given a party at Orchard Farm Restaurant.

A cake with "Congratulations", Westmoreland, North League Champions, along with hamburgers, french fries, coke and milkshakes were served to players and cheerleaders.

The party was thrown by a few sports minded men of the Back Mountain area.

Player	g	f	pts.
Westmoreland	10	3	23
Gauntlett	2	1	5
Inman	1	0	2
Oney	11	1	23
Trewhorn	0	0	0
Supulski	6	8	20
Evans	3	0	6
Rusiloski	1	0	2
Sarno	34	13	81

Player	g	f	pts.
Fairview	1	0	2
Vivian	2	1	5
Stout	2	1	5
J. Williams	8	0	16
Sauerwine	0	0	0
Weyhemmer	3	1	7
Smith	1	2	4
Hudock	0	0	0
G. Williams	3	0	6
Jeckell	19	6	44

Fouls tried Westmoreland 20, Fairview 15. Officials—George and DeFaven.

### MISERICORDIA MEETS EAST STROUDSBURG AT HOME TONIGHT

Boasting a 7-1 record for the season, the Misericordia sextet faces a powerful East Stroudsburg team at home tonight. Game is scheduled for 7:30.

The Highlanders had little trouble in turning back Philadelphia College of Bible 87-38, at home Tuesday night.

Jean Drapevski with 36 and co-captain Emma Engler 35 points paced the Misericordians.

### Horseshoe 4-H Club Has Two Horse Displays

In accordance with National 4-H Club Week — March 3 to March 10 — the Back Mountain Horseshoe 4-H Club will have displays at Nick Perella's Hair Fashions at Back Mountain Shopping Center and at Winifred's Beauty Shop, Dallas.

"Breeds of Horses" will be the theme of the Shavertown display and "Horses Yesterday and Today," the theme of the Dallas exhibit. Posters will be found around Dallas, Shavertown, and Lehman in an effort to inform the public of the club's projects.

"College basketball coaches are all interested in higher education, and the closer they come to seven feet the better they like it."—Finn B. Eriksen.

The Congo River crosses the Equator twice.

### Car Plows Into Yard, Overtakes

#### Five More Cars Skid On Glare Ice

Mrs. Chester Nesbitt heard the crash when a car driven by a sixteen year old boy ploughed into her yard early Monday morning, after skidding on ice on the main highway in Shavertown, but she thought it was ice falling off the roof and went back to sleep. In the morning she found an overturned car in the yard, and several uprooted trees.

Arkady Smolin, West Wyoming, was returning from Harveys Lake at 1:30 a.m. when he skidded on a patch of ice.

Several hours later, three cars and a truck tangled a few rods south of the location of the first accident, near Purcell's in Trucksville.

Driver of the car which caused the accident regained control after skidding, and kept going.

The four vehicles immediately behind, attempting to avoid collision, created a traffic jam. Nobody was hurt, but eight College Misericordia students were late to class.

The small truck driven by Edward H. Trumbower, Jr. of Shavertown, struck a car containing four college girls, driven by Sharon Connelly of Pringle.

In a chain reaction, the truck was hit by a car driven by Rita Woznicki, also en route to College Misericordia with passengers. The Woznicki car was then struck by a station wagon driven by William Macking of Wilkes-Barre.

### Civil Defense Tuesday

Civil Defense personnel will meet Tuesday evening at 7:30 in the Dallas Borough Building.

Subscribe To The Post

### Film Available Tax Available

U. S. Internal Revenue Service activities that mystify taxpayers are explained in a new motion picture just released by the tax agency, according to R. P. Brownell, District Director of Internal Revenue for Scranton District.

The film, entitled "The Inevitable Day," is 28 minutes long. It depicts present and future activities that affect millions of the nation's taxpayers.

It deals with the electronic machines which IRS will install for its new automatic data processing operations. It explains what a taxpayer may do when he disagrees with a tax finding against him, and what a taxpayer can do when his annual tax due at filing time exceeds the sum which has been withheld from his salary.

The film employs professional actors, but it uses actual office operations to highlight many important functions. Claude Rains narrates sections of the film in which performers do not actually speak.

This film is available for schools, civic organizations, industrial plants, or any other groups by writing to the District Director of Internal Revenue, P. O. Box 631, Scranton 14, Pennsylvania.

### Cancer Society Seeks Old Sheets And Muslin

In an effort to help Cancer volunteers of the Back Mountain area gather clean old sheets and pillow cases for dressing covering, Charles Gosart's Store on Memorial Highway and Wally Gosart's Store in Shavertown have placed containers for these items in their stores.

Due to the large demand for dressing by area patients, any donations of white muslin for this purpose will be greatly appreciated.

## EVANS Drug Store

**Flexall**

### ★ STAR SPECIAL

**\$5.98**  
**ELECTROLUX**  
**HEATING PAD**

**\$3.98**

Automatic Shut Off Guaranteed

### EVANS DRUG STORE

PRESCRIPTION PHARMACY

SHAVERTOWN OR 4-3888

## The Fashion News is here!

From \$10.99

**LAYAWAY YOUR SELECTION NOW!**

WHILE STOCK IS COMPLETE!

From \$19.99

• COATS  
• SUITS  
• TOPPERS

**WALKING SUITS from \$19.99**

From \$10.99

• WOMEN'S  
• MISSES'  
• TEEN'S  
• PRE-TEEN'S

From \$14.99

You'll find all Sizes, Colors and Latest Styles in our Second Floor Fashion Department.

# Globe IN LUZERNE

OPEN 'TIL 9—THURSDAY and FRIDAY

## DOLLARS for JOBS

GIVE

### Greater Wilkes-Barre 1961 INDUSTRIAL FUND CAMPAIGN

## Just think of the SAVINGS!

TAKE ADVANTAGE OF THESE

# WHITESSELL BROTHERS SPECIALS

AND DO-IT-YOURSELF!

**SAVE 35% ON ALL Luminall Paint**

Interior—Exterior

**BUY NOW WHILE COLOR SELECTION IS COMPLETE**

Vinyl Prefinished MAHOGANY PANELING

18c SQ. FT.

1/4" x 4' x 8'

**ZONOLITE INSULATION**

Reg. \$1.65 Pours Into Place—Fireproof

1.40 BAG

**FIBERGLAS**

2" Med. Thick 5c Sq. Ft. 3" Full Thick 6 1/2c Sq. Ft.

**RANDOM DRILL Accoustical CEILING TILE**

REG. 19c 12" x 12"

16c PER SQ. FT.

**SAVE 64c Per Sheet**

1/2" x 48" x 96"

**PARTICLE BOARD**

REG. 15c

13c SQ. FT.

Sturdy, inexpensive, so many uses. Ideal for shelving, desk tops, cabinets, etc.

**PEGBOARD**

HAS SO MANY USES! KEEPS ROOMS NEAT! USE IN GARAGES, GAME ROOMS, CLOSETS

1/8" x 48" x 96"

\$2.50 PER SHEET

REG. \$3.20

**FIR SANDED PLYWOOD**

INTERIOR - DFPA GRADE STAMPED

4' x 8' PANELS	SQ. FT.	SHEET
1/4" AD - GIS	97/2c	\$3.04
1/2" AD - GIS	171/2c	\$5.60
3/4" AD - GIS	23c	\$7.36

Bring the whole family and browse thru our store... We handle a complete line of hardware, tools, paint, lumber, building supplies.

FREE DELIVERY ON ORDERS OF \$50 OR MORE—ALL OTHERS, CASH-AND-CARRY

Tel. DALLAS OR 4-1671

ROUTE 115 — JUST OFF HARVEYS LAKE HIGHWAY

Store Hours — 8 A.M. to 5 P.M. - Except Sunday OPEN 'TIL 5 P.M. SATURDAY