

FREE ADVERTISING

In a school in one of the poorer districts of a big city, a questionnaire was sent home with a new

pupil, requesting information regarding the home environment, number of brothers and sisters, father's occupation and so on.

The next day the child returned with a scrap of paper on which was the following: "We have 18 children. My husband can also do plumbing and carpentry work."

Wheeler's Cafe
NOXEN ROAD
HARVEYS LAKE
EVERY SAT. NIGHT
LOBSTER TAIL
PLATTER
1/2 Spring Chicken
75c

PHONOGRAPHS
\$24.95
Jacobs Music Centre
Center St. Main Highway
Shavertown
Phone OR 5-1567 OPEN 9 to 9

Lake-Lehman Faculty And Board Have Annual Christmas Party

Lake-Lehman Faculty and School Board held their annual Christmas Party Wednesday evening, December 7 at Irem Temple Country Club with 135 persons in attendance.

Delbert Hines, Ross Township School Board member and member of the faculty, offered the invocation, Toastmaster was Arthur Nuss of the faculty.

Entertainment of an unusual nature was provided by thirty members of the School Brass Ensemble directed by John Milauskas.

Dinner music was played by a representative of DeLuca's Music

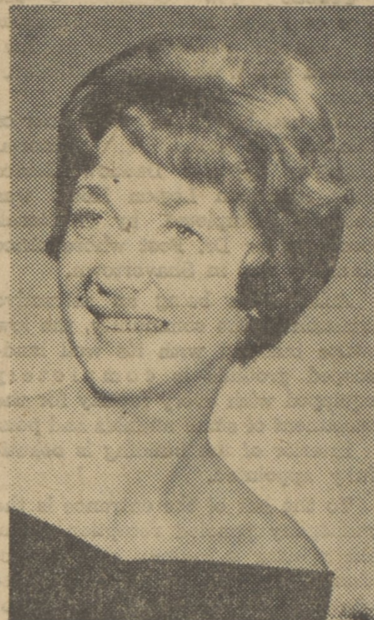
Store on the Hammond organ. Gifts were presented to Mr. and Mrs. Lester Squier, Mr. and Mrs. Anthony Marchakitus and Mr. and Mrs. Robert Bellas who responded with brief remarks.

Howard Newcomer brought greetings from the County Superintendent's office.

Members of the committee were: Hannah Culp, Marjorie Cosgrove, Hazel Baer, Shelia Godwin, Janet Turner and John Milauskas.

Two Local Girls In "Who's Who"

Eleven Girls Are Chosen At Wilkes



JANICE BRONSON

Janice Bronson and Beverly Ann Major, senior students at Wilkes College, are among the eleven students chosen out of 741 men and 396 women at Wilkes for inclusion in "Who's Who in American Colleges and Universities. Both girls are Lake-Lehman graduates.

Janice is daughter of Mr. and Mrs. Alfred Bronson, Sweet Valley. A major in elementary education, she is president of Chapman Hall; chairman of School Spirit Committee, captain of the Kick-Line; chairman of charity of Theta Delta Rho; historian of the education club. She was Home-Coming princess for 1960; was an exchange student to Hampton Institute, and a delegate to Allenberry.

Beverly is daughter of Mr. and Mrs. Bryce Major of Lehman, majoring in English. She is editor-in-chief of "Amnicola," the college year book; manuscript and copy editor of the weekly "Beacon"; a member of student government; of the Madrigal Singers and the Mixed Chorus; is on the Dean's List. Beverly was Home-Coming Queen for 1960.

Students selected for the National "Who's Who" receive a certificate of achievement in scholarship, leadership, ability, citizenship, and extra-curricular activities. They are put on the lists of the National Student Placement service, insuring special consideration in career placement.

Faculty And School Board Dine At Club



These were the members of Faculty and School Board who sat at the head table when more than 135 members of the Faculty and School Board held their annual Christmas Party Wednesday night at Irem Temple Country Club.

Seated, left to right, Lester Squier, Supervising Principal; Mrs. Squier; Arthur Nuss, toastmaster; Mrs. Nuss; Anthony Marchakitus, High School Principal; Mrs. Marchakitus.

Standing, Robert Bellas, Elementary Principal; Mrs. Bellas; Edgar Lashford, President Lake-Lehman School Board; Delbert Hines, member Ross Township School Board, who gave the invocation, and Mrs. Hines.

Dyke Brown Dies At Veterans

Ardent Horseman Passes Away At 71

Michael J. Brown, 71, Lake Street, died Tuesday morning at Veterans Hospital, where he was admitted last Thursday by Dallas Community Ambulance. He had been ill for some time.

Services will be held Friday morning at 10 from the Disque Funeral Home, with a requiem mass at Gate of Heaven Church at 10:30. Burial will be in Fern Knoll. Friends may call tonight, 7 to 10. The rosary will be recited at 8 p.m.

Mr. Brown, familiarly known as Dyke, was an ardent horseman, one of the original organizers of the Lehman Horse Show, and a member of Back Mountain Horsemen's Club.

During World War I he was a corporal with the 23d Ordnance Guard Company.

He was a former coal contractor associated with Glen Alden Coal Company.

A native of Plymouth, his parents were the late Thomas and Mary Kinney Brown. He was educated in Plymouth schools, and belonged to a number of organizations in that city, including Kiwanis Club and American Legion Post 463.

In 1933, he moved to the Back Mountain area, lived here for several years, and moved back to Plymouth. When he retired three years ago, the family moved to 71 Lake Street.

Surviving are: his widow the former Louise Burk of Plymouth; a son, Thomas, Lehman; two grandchildren; sisters: Mrs. Irving Miller of Scranton; Mrs. P. A. Roan, Plymouth; Mrs. G. Murray Leighton, Wilkes-Barre; a brother, John, Plymouth; a number of nieces and nephews.

A good active dog will do much toward keeping a farm free from rats. Ferrets are valuable when handled by experienced men. Cats are not usually good ratters. Snakes, hawks and owls are also enemies of the rat.

More than 44 million of the 50 million U. S. households will receive a newspaper today.

Want To Sell Your House? Use The Trading Post

\$10 Million Damage A Year By Rats In Penna.

The rat is a major pest in Pennsylvania.

It is estimated that in the United States the annual damage amounts to over two billion dollars. The Pennsylvania Department of Agriculture estimates the state's annual loss is probably not less than \$10,000,000.

The rat is prolific, producing six or more litters a year, with about ten young in each litter.

The first step in rat control is to "build them out" by rat-proofing buildings. Cement the basement walls and floors of buildings, extending the cement down into the ground deep enough to prevent the rat from getting under. Slope the cement outside so the rats cannot get a foothold. Treat all buildings so the rats will have no refuge. Protect all foodstuffs, stored cereals and grains so that the rat cannot have access to them.

The guillotine type of trap is most successful for rat control. Place traps

so the rat must run over it when following along the wall. It is not always necessary to bait the trap, but if baiting is done tie or wire the bait to the trigger. Bacon, beef, fish, fresh liver, nuts meats or cheese are good bait materials. Use an abundance of traps. In apartment houses or large warehouses from twenty to several hundred will be needed. On a medium size farm not less than a hundred well placed and baited traps are necessary to do effective work.

Warfarin, fumerin and pival are the active ingredients in many preparations now on the market recommended as poison for rats. They are usually mixed with dry oatmeal and cornmeal. These are anti-blood clotting poisons and must be consumed by the rats for a week or ten days before they die. Rats are not suspicious of these mixtures and will continue to eat until they are killed. Bait boxes should provide easy

access by rats and mice but covered to exclude domestic animals. REMEMBER THAT THESE MIXTURES ARE POISONOUS AND MUST BE KEPT FROM LIVESTOCK AND IRRESPONSIBLE PERSONS.

To prepare a bait with red squill, mix one ounce of the powdered red squill with a little water to form a thin paste free from lumps. Add to this ten ounces of fish and mix thoroughly. In a like way, one ounce of the powdered red squill in water is mixed with ten ounces of fresh hamburger steak or ten ounces of other bait.

A good active dog will do much toward keeping a farm free from rats. Ferrets are valuable when handled by experienced men. Cats are not usually good ratters. Snakes, hawks and owls are also enemies of the rat.

get your beautiful hand crafted...

Fine China BANK

AT THE MINERS



This hand crafted bank is a collector's item... gloriously colored and gift wrapped. It stands six inches high, and it's more than just a bank... it's a fine china figurine suitable for any room in your home.

Get Your Santa Saver

at any of the Miners National Offices. Supply is limited, so get yours NOW!

\$150

BANK 1.44 TAX .06 At Any Teller's Window

- For Christmas Savings
- For Holiday Decoration
- For Gift Giving

The Friendly

"Miners in Dallas"

Miners National Bank --- Main St., Dallas, Pa.

Member Federal Deposit Insurance Corporation

SHOP & SAVE AT LEONARD'S

CHRISTMAS IS ALL AROUND US AT LEONARD'S

Gifts to fit the Person!

SOMETHING FOR EVERYONE IN EVERY WANTED ITEM AT SANTA CLAUS PRICES!

Advertisement for Leonard's jewelry and gifts, featuring various items like watches, rings, and watches for different family members (Husband, Wife, Brother, Sister, Sweetheart).

Advertisement for stationery and gifts, including tobacco gifts, favorite cigars, stationery gifts, Timex watches, and Amity wallets.

Advertisement for Whitman's Chocolates and Stuffed Animals, featuring a variety of chocolate samplers and stuffed animal toys.

Advertisement for Coty and Yardley cosmetics, including talcum powder, cologne, and hand lotion.

Advertisement for Hall's Pharmacy, featuring a list of products like Ambush, Lanvin, Faberge, and Max Factor, along with contact information.

Advertisement for Leonard's jewelry store, highlighting Wyoming Valley's largest jewelers and listing products like diamonds, watches, and gifts.