

Bowling News

By DORIS MALLIN

The winning streak of Wilson and Son Lumber came to an end last week when it came up against West Side Building in the COUNTRY League and lost 4 points placing the

two teams in a tie for top spot. Wilson Lumber fought hard for the leading position they have held since beginning of second half; at one time in the first half of the season they were at the bottom. They bowled "with their hearts" Tuesday night when they met Circle Inn and took first two games easily, but fell down with all the bad breaks on their side during the last game. They

lost 4 points. West Side meant everything to the Dairy. My congratulations go to Wilson Lumber on a good showing and to West Side Building for the second half championship. Bocar Manufacturing, first half winner and West Side will meet next week in a playoff. Country League will roll off for Proprietor's Tournament Tuesday.

High games last week were 161-172 (483), F. Lewis; 167-163 (480), A. Selingo; 162, A. Stevens; 161, R. Stair.

HARVEYS LAKE WOMEN'S CLUB League first half winner, Pines, met Spruces, second half winner last Tuesday and Pines took the league championship. Pines had highest total pins of 30303 for the season and Poplars had highest game of 779. Janet Lee was high for the season

with 223 while Marie Ritts led the first half with 211; Jane Bicking held highest average of 156 and Ginger Gosart had 152. Captain of champion Pines is Dot Finn, flanked by Helen Bialogowicz, Janet Lee, Betty DeBarry, Jerry Petroskas. Natonettes lead NATONA GIRLS League with 84 points followed with Cardettes some distance behind with 69. High team this week was Natonettes with 1720, not as good as last week's 1778 rolled by Cardettes. M. Dendler was high for the week with 154-379 and G. Fielding led last week with 188-494. High games for the last two weeks were rolled by M. Tryon, 147; N. Smith, 138; A. Davis, 131; G. Fielding, 169; P. Klug, 144; L. Crispell, 144; M. Tryon, 158; E. Dendler, 141.

Blue birds lead DALLAS WOMEN'S CLUB League with 36 points while Wrens fly close with 34 and Canaries are singing happily with their 31 after taking total pins of 1663 Thursday. Bluebirds had highest game of 657. B. Brace scored 186 and B. Stanley had three games totalling 466.

Strikes took second half of LUTHERAN WOMEN'S League with 34 1/2 points after quite a battle with Spares who ended with 32. Spares, as first half winners, will meet Strikes tonight to determine league championship.

Strikes led the league with total

pins of 2015 and Spares had high game of 697. High three game series was rolled by M. McCarty with 438 and A. Dungey had single high of 174. K. Kalafsky had 166, M. Gosart, 163, and M. McCarty, 161. The annual banquet will be at Beaumont Inn, May 9, 7 p.m. Chevrolet upset DeSotos for 3 points in ST. PAUL'S LUTHERAN BROTHERHOOD League Friday night and are in second place with 78 points while DeSotos still lead with 84. Chevrolet's were "tops" for the night with one game of 905 and 2583 total pins. Ambrose scored 224 and Garris totalled 565 including games of 193 and 190.

T. Cross rolled 185-182 (547); Spengler, 188-179 (536); and Cortright, 195-178 (533). A Pottsville woman, Mrs. N. J. Reading, Mamie's Avenue, was declared the winner yesterday afternoon of the Chevrolet sedan awarded weekly for the next eight weeks by Acme Markets to some one of its lucky customers.

BEAUMONT WINS OPENER, 24-0

Beaumont opened the season with

a 24-0 crushing win over Center Moreland in the Bi-County League Sunday on the loser's diamond.

The winners collected 28 hits off the offerings of the opposing hurlers with Larry Crispell and Wilson

leading the attack with four hits each, while Belles, Straley and Purvin each collected three.

Mel Crispell and Everettes did the hurling for Beaumont as the pair combined to toss a two-hitter with

Dubois and Besteder p two safeties for Center Beaumont takes on Sunday at home. All ho are played at Beaumont S

BPS VINY-BOND

VINYL LATEX FLAT WALL FINISH

NOW ON SALE!

FAMOUS ONE-COAT WALL FINISH

... COLOR MATCHED TO YOUR ROOMS

Only \$4.98 GAL.



- Washable
- Scrubbable • No painty odor
- One gallon paints average size room
- Use freshly-painted room same day

ANOTHER TOP PAINT VALUE FROM PATTERSON-SARGENT

HUSTON'S FEED SERVICE

FERNBROOK CORNERS DALLAS Phone OR 4-6191

FOR MOTHER'S DAY GIVE

SUNDAY, MAY 10

Whitman's CHOCOLATES



\$2.00 a lb. Whitman's Sampler

So Fine So Famous So Sure To Please

★ New Packages! ★ New Assortments!

HALL'S DRUG STORE

SHAVERTOWN

REMODELING?

let Don help you with a LOW COST LOAN



Planning to improve your home? Why wait? Start right in. Whatever the improvement, Luzerne National Bank is ready to help you with a low cost loan. Stop in—tomorrow—see Don Seebold, and get your plans underway—quick.

LUZERNE NAT'L BANK

118 Main Street, Luzerne • Member F. D. I. C.

FELT BASE LINOLEUM

REG. 89c

now 59c sq. yd.

2 Patterns

To Be Sold at

49c sq. yd.

STRAUSER'S

LINOLEUM & TILE CENTER

186 Main St., Luzerne

BU 3-4827

Open Thurs. & Fri. Eve. 'til 9 o'clock

GIFTS to thrill Mom!

Cotton Dresses - - - - \$2.98

Sizes 12 - 20 — 16 1/2 - 24 1/2

Mother's Day Cards

Girls' Plaid Slax - - - - \$1.49

Tischler's

Shavertown 5c & 10c Store

Cor. Main Highway and Center St. OPEN EVERY EVENING 'TIL 8:30

Everybody's using it!



MINERS

Check-Credit

The dignified way to convenient borrowing

MAIL THIS COUPON

Miners Check-Credit, DP 5
 Miners National Bank of Wilkes-Barre
 8-18 West Market Street
 Wilkes-Barre, Pa.
 Please send me an application for a Miners Check-Credit Account

Name _____
 Address _____
 City _____ State _____

THE FRIENDLY

"Miners in Dallas"

Miners National Bank --- Main St., Dallas, Pa.

Member Federal Deposit Insurance Corporation

Dream Gifts for Mother!

We Sell Only QUALITY MERCHANDISE

LADIES' BAN-LON SWEATERS REG. \$4.98 \$2.97

LADIES' 100% Nylon HALF-SLIPS REG. \$1.98 97c

LADIES' SUMMER SLAX REG. \$2.98 \$1.97

LADIES' OXFORD SNEAKS Blue or White \$1.89

LADIES' Quality ANKLETS Reg. 39c Pair 4 pr. 88c

LADIES' REG. \$1. BRAS 2 for \$1.

LADIES' COTTON BLOUSES REG. \$1.98 96c

LADIES' Jamaica or Bermuda SHORTS REG. \$1.98 99c

LADIES' NYLON HOSE REG. 79c 59c

LADIES' PLAY SHOES Val. to \$3.98 \$1.69

LADIES' RAYON PANTIES REG. 59c 3 for \$1.

LADIES' CREPE DUSTERS REG. \$2.98 \$1.88

LADIES' PLISSE PAJAMAS REG. \$3.98 \$2.57

LADIES' PEDAL PUSHERS REG. \$2.98 \$1.88

LADIES' JERSEY NECK BLOUSES Reg. \$1.98 99c

LADIES' BEDROOM SLIPPERS REG. \$2.98 \$1.99

LADIES' SUMMER SKIRTS REG. \$2.98 \$1.88

LADIES' REG. \$3.98 HOUSE DRESSES \$2.97

YOUR KEY TO GOOD GOVERNMENT

THE LOYAL REPUBLICAN TICKET

ATTY. RICHARD E. BIGELOW



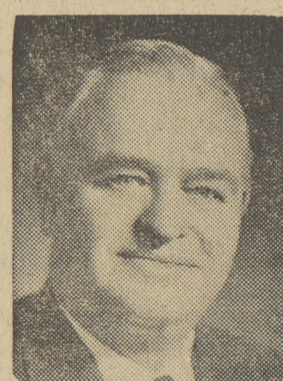
COMMON PLEAS JUDGE

ATTY. JOSEPH P. OLEXY



DISTRICT ATTORNEY

PETER D. CLARK



COUNTY COMMISSIONERS (VOTE FOR TWO)

WILLARD D. PECK



MICHAEL (MIKE) KRAVITSKY



SHERIFF

"MEN OF INTEGRITY"

M. LUTHER KAISER



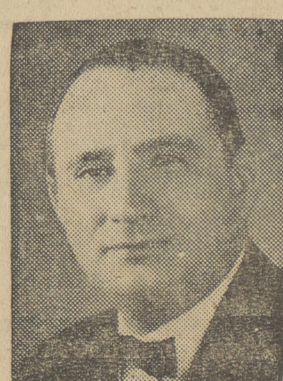
TREASURER

CHARLES E. EIDAM



REGISTER OF WILLS

SAMUEL J. ARGENTO



RECORDER OF DEEDS

DR. ALBERT J. VALIBUS



CORONER

CHARLES F. WALTER



SURVEYOR

VOTE A WINNING TEAM

• Pledged To Responsible County Government •

Candidates For Whom You Need Not Apologize In November

Factory Distributors

In The Center Of Town

In LUZERNE