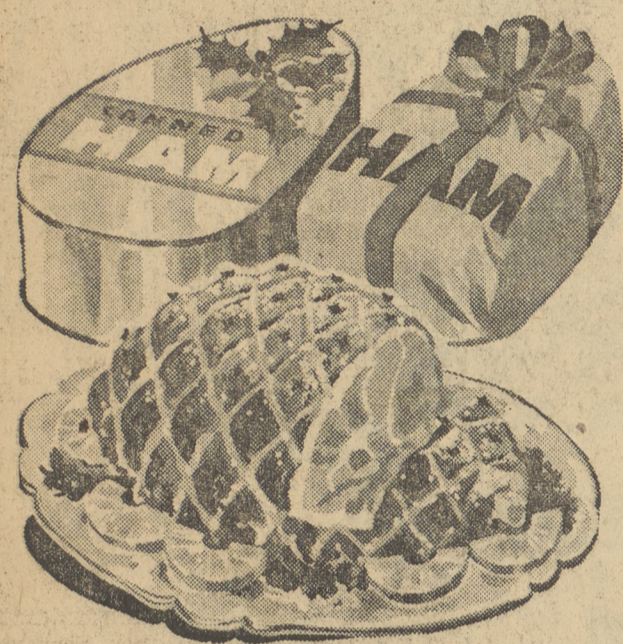


# Double Food Savings for CHRISTMAS!

LOW PRICES Plus  
S. N. GREEN STAMPS



(Prices in this ad effective thru Sat., Dec. 27th.)



Lancaster Brand, Fully Cooked  
Tender, Meaty, Shankless

## HAMS

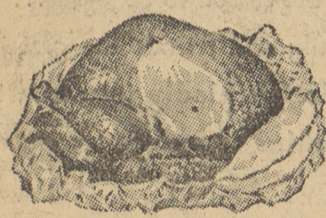
(Over 12-Lbs.)  
Whole or Shankless  
Half **59<sup>c</sup>** LB.

"Sold Only at your Acme Markets"

Whole Canned Hams (marked weight) Lb. **69<sup>c</sup>**

Lancaster Brand, Broad Breasted, Oven Ready

## TURKEYS



18-Lbs. and up **37<sup>c</sup>** LB.  
10 to 17 Lb. Turkeys Lb. **41<sup>c</sup>**

Stuffing Bread 2 Loaves **33<sup>c</sup>**

- |                      |              |          |                            |
|----------------------|--------------|----------|----------------------------|
| Farmdale White Bread | Sliced       | Loaf     | <b>17<sup>c</sup></b>      |
| Pumpkin Pies         | Virginia Lee | Save 10c | Each <b>45<sup>c</sup></b> |
| Mince Pies           | Virginia Lee | Save 10c | Each <b>55<sup>c</sup></b> |
| Fruit Stollen        |              |          | Each <b>35<sup>c</sup></b> |
| Coffee Cake          |              |          |                            |

FOR CHRISTMAS GIFTING!

- |                                           |      |                       |
|-------------------------------------------|------|-----------------------|
| Beacon Blankets (42"x90")                 | each | <b>\$3.98</b>         |
| Eleven Piece Set Cowboy Outfit            | each | <b>\$5.99</b>         |
| Betty the Beautiful Bride Doll (30" Tall) | each | <b>\$9.98</b>         |
| Deluxe Sweet Janie Doll (25" Tall)        | each | <b>\$4.99</b>         |
| Stainless Steel Tableware 5-Piece Set     |      | <b>69<sup>c</sup></b> |

HOLIDAY NUTS

- |                     |          |                       |
|---------------------|----------|-----------------------|
| Diamond Walnuts     | Lb. Pkg. | <b>49<sup>c</sup></b> |
| Fancy Brazil Nuts   | Lb. Pkg. | <b>49<sup>c</sup></b> |
| Fancy Filberts      | Lb. Pkg. | <b>43<sup>c</sup></b> |
| Rob Ford Mixed Nuts | Lb. Pkg. | <b>55<sup>c</sup></b> |
| Fancy Pecans        | Lb. Pkg. | <b>65<sup>c</sup></b> |

All Acme Markets  
**OPEN MONDAY & TUESDAY 'Til 9 P. M.**

Will Close Christmas Eve, Wednesday, Dec. 24th at 6 P. M.

**Closed Christmas Day, December 25th**

Regular Store Hours Friday and Saturday, Dec. 26th and 27th

### HOLIDAY PRODUCE SPECIALS

- |                                                                   |                                                               |                             |
|-------------------------------------------------------------------|---------------------------------------------------------------|-----------------------------|
| Large, Sunkist, Seedless <b>ORANGES</b>                           | "The perfect holiday fruit"                                   | Dozen <b>39<sup>c</sup></b> |
| Fancy Cape Cod Cranberries 1-lb. Cello Pkg. <b>19<sup>c</sup></b> | Fancy, Fresh Shallots 2 Bchs. <b>19<sup>c</sup></b>           |                             |
| U.S. No. 1, Russet, Baking POTATOES 10-Lb. Bag <b>59c</b>         | Gherry Red Radishes 2 Cello Pkgs. <b>13<sup>c</sup></b>       |                             |
| Fancy, Western Anjou or Bosc Pears 2 Lbs. <b>25<sup>c</sup></b>   | Fresh, Tender, Green Broccoli Lge. Bch. <b>25<sup>c</sup></b> |                             |

Special! Virginia Lee, Creamy Delicious

## ICE CREAM

1/2 Gallon Package **79<sup>c</sup>**

Special Price On Ice Cream Effective Dec. 22nd, 23rd, & 24th Only!

(Sliced) Ideal Frozen Strawberries 1 1/2 oz. pkg. **29c** Rich's Whipped Topping 7-oz. can **39c**

- |                                |                              |             |                       |
|--------------------------------|------------------------------|-------------|-----------------------|
| Wincrest Coffee 3-Lb. Bag      | <b>1.69</b>                  | Lb. Bag     | <b>59<sup>c</sup></b> |
| Ideal Instant Coffee 6-oz. Jar | <b>95<sup>c</sup></b>        | 4-Oz. Jar   | <b>69<sup>c</sup></b> |
| Bala Club Beverages            | Plus Bottle Deposit <b>2</b> | Quart Bots. | <b>25<sup>c</sup></b> |
| Ideal Cranberry Sauce          | <b>2</b>                     | 16-Oz. Cans | <b>39<sup>c</sup></b> |

BAKING NEEDS

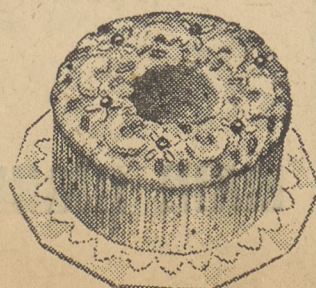
- |                                                   |                       |
|---------------------------------------------------|-----------------------|
| Ideal Mince Meat 28-oz. Jar                       | <b>45<sup>c</sup></b> |
| English Walnut Meats 6-oz. Pkg.                   | <b>55<sup>c</sup></b> |
| Green, Red or Natural Glazed Pineapple 4-oz. Pkg. | <b>29<sup>c</sup></b> |
| Green or Red Glazed Cherries 4-oz. Pkg.           | <b>35<sup>c</sup></b> |
| Red or Green Sugar Garnishettes 2 1/2-oz. Bot.    | <b>10<sup>c</sup></b> |

CHRISTMAS CANDIES

- |                                  |               |                       |
|----------------------------------|---------------|-----------------------|
| Virginia Lee Assorted Chocolates | 2 1/4-Lb. Box | <b>\$1.79</b>         |
| Christmas Assorted Chocolates    | 2 1/2-Lb. Box | <b>\$1.49</b>         |
| Christmas Candy Canes            | Pkg. 6        | <b>29<sup>c</sup></b> |
| Christmas Hard Candy             | 14-oz. Pkg.   | <b>29<sup>c</sup></b> |
| Christmas 50% Filled Candy       | 14-oz. Pkg.   | <b>33<sup>c</sup></b> |

Virginia Lee, Delicious

## Fruit Cakes



Lb. Cake **99<sup>c</sup>**

2-Lb. Cake **1.95**

Bursting with luscious fruits and nuts... a real holiday favorite!

- |                         |                                   |                                  |
|-------------------------|-----------------------------------|----------------------------------|
| Gerber's Baby Food      | Str. 6 Jars <b>59<sup>c</sup></b> | Jr. 4 Jars <b>59<sup>c</sup></b> |
| N.B.C. Ritz Crackers    | Lg. Stack Pack                    | <b>29<sup>c</sup></b>            |
| Sunshine Hi-Ho Crackers | 6 1/2-Oz. Pkg.                    | <b>19<sup>c</sup></b>            |
| Clark's Budget Gum      | Pack of 50                        | <b>29<sup>c</sup></b>            |

Sara Lee

- |                          |                |            |
|--------------------------|----------------|------------|
| Chocolate Brownies       | 14 oz. pkg.    | <b>79c</b> |
| Coffee Cake "All Butter" | 8-oz. pkg.     | <b>49c</b> |
| Cheese Cake "Creamy"     | 1 1/2-oz. pkg. | <b>79c</b> |



Register Today!

CONTEST CLOSES ON WEDNESDAY, DECEMBER 24th

**100 VALUABLE PRIZES!**

The Grand Prize... A 1959 IMPALA CHEVROLET  
99 OTHER FABULOUS FREE PRIZES  
DRAWING WEDNESDAY, DECEMBER 31st, 1958  
(Chevrolet was purchased at the City Chevrolet Co., Market St., Kingston)