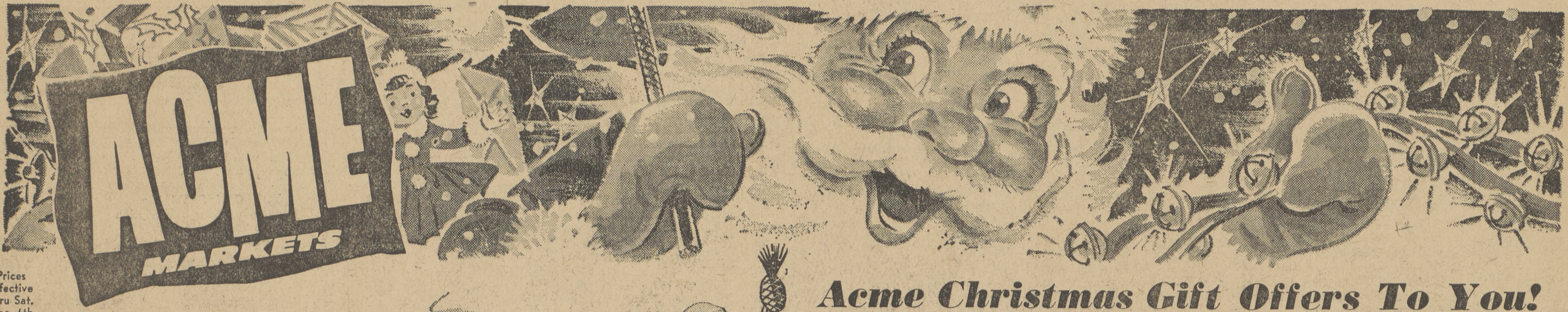


LOOK! 100 FREE PRIZES!

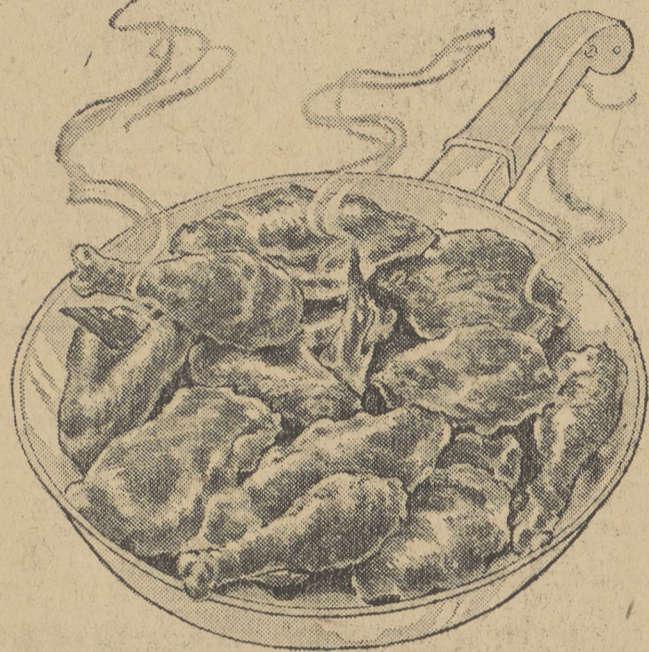


Prices effective thru Sat. Dec. 6th

Fresh Local Dressed

FRYERS

Lb. **29** Tender Young Flavors



Lancaster Brand "Oven Ready" **Rib Roast** Lb. **59¢**

Imported, Lean, Sliced **Boiled Ham** 1/2 Lb. **49¢**
Lancaster or Blue Star **Canned Chicken** 3/4 Lb. Can **99¢**

Tender, Genuine Spring **Legs O' Lamb** Lb. **59¢**

Lamb Shoulder Lb. **49¢**
Lamb Shoulder Chops Lb. **59¢**
Lamb Neck Lb. **29¢**

Acme Christmas Gift Offers To You!

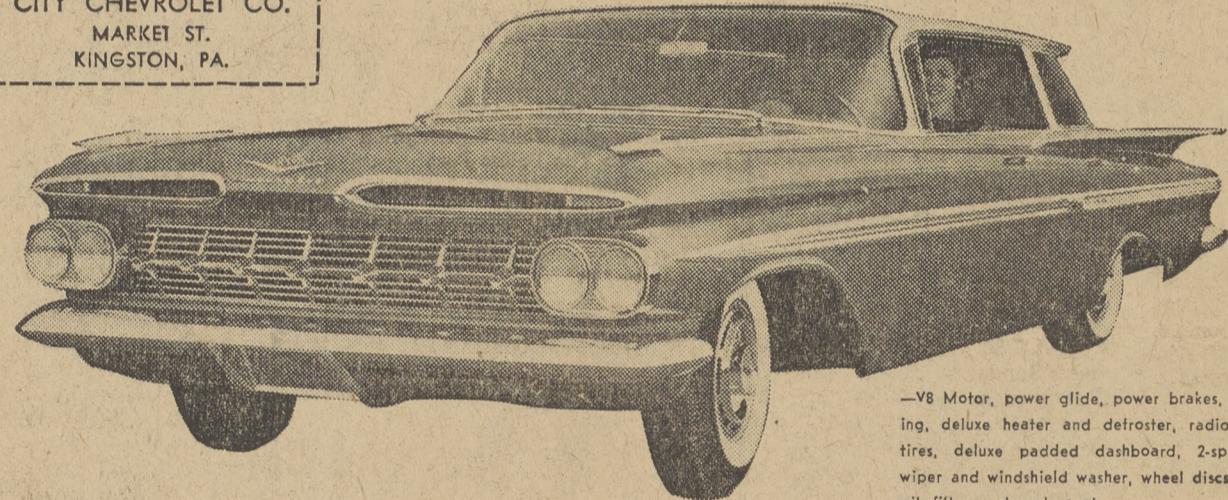
IT'S EASY! IT'S FREE! SIMPLY REGISTER YOUR NAME AT YOUR NEARBY ACME MARKET. FREE ENTRY BLANK TO EACH ADULT. NO PURCHASE NECESSARY. NO STRINGS ATTACHED. PLAN TO GET YOUR FREE ENTRY BLANK TODAY!

WIN FREE!

A NEW 4 DOOR, IMPALA, SPORT SEDAN

1959 CHEVROLET

Purchased at the CITY CHEVROLET CO. MARKET ST. KINGSTON, PA.



—V8 Motor, power glide, power brakes, power st., r., ing, deluxe heater and defroster, radio, white wall tires, deluxe padded dashboard, 2-speed e' tric wiper and windshield washer, wheel discs, anti-freeze, oil filter and undercoat.

- (2) 21" ZENITH TV SETS
- (1) RCA HI-FI PHONO. RADIO COMB.
- (1) WESTINGHOUSE PORTABLE TV SET
- (2) VOICE OF MUSIC HI-FI SETS (TABLE MODELS)
- (6) KEYSTONE CAPRI (TRI-LENS) MOVIE CAMERAS
- (2) KEYSTONE REGAL MOVIE PROJ'CTORS

- (7) Westinghouse Electric Toasters
- (6) Sunbeam Electric Toasters
- (15) G.E. Electric Blankets (Single Bed)
- (5) Toastwell Electric Toasters
- (9) Presto Hostess Sets (Fry Pan, Sauce Pan, Auto. Cont.)
- (1) Westinghouse Steam & Dry Iron
- (1) Westinghouse Electric Iron
- (15) Electric Corn Poppers
- (10) Electric Drill Kits
- (2) West Bend Automatic Fry Pans
- (6) Norelco Electric Shavers
- (8) Super Serve Sets (TV Snack Table) (4 Snack Trays)

DRAWING WEDNESDAY, DECEMBER 31, 1958

You need not be present to win. Winners will be announced.

(American Stores Co. Employees or Their Immediate Families Are Not Eligible To Participate)



Large Solid Ripe Fresh

Tomatoes

Cello. Pkg. **19¢**

Young, Tender Calif.

Broccoli Large Bunch **25¢**

Fresh Florida

Endive 2 Lbs. **29¢**

Large Florida Seedless

Grapefruit 4 For **29¢**

Young Tender

Escarole 2 Lbs. **29¢**

Armour's CHOPPED HAM 12-oz. Can **65¢**

Round the Clock Juice

Orange-Pineapple OR Orange Apricot 2 46-oz. Cans **69¢**

Refreshing

Del Monte Pineapple-Pear Juice 2 46-oz. Cans **69¢**

White

Princess Paper Napkins (Save 6c) 3 Pkgs. 80 **29¢**

Enriched

Gold Medal Flour 5 -Lb. Bag **55¢** 10 -Lb. Bag **\$1.05**

Ideal Frozen

Fordhook Limas (Save 9c) 3 10-oz. Pkgs. **55¢**

Ideal Frozen

Cauliflower (Save 12c) 3 10-oz. Pkgs. **55¢**

Wisconsin

Sharp Cheese Save 4c Lb. **55c**

Virginia Lee

Peach Pies (Save 10c) Ea. **49¢**

Virginia Lee Vanilla Iced

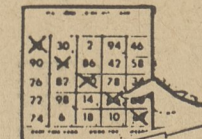
Devils Food Cake (Save 10c) Ea. **59¢**

GO CHRISTMAS SHOPPING WITH

S & N

GREEN STAMPS

THIS IS YOUR FINAL CROSS-OUT GAME. PLAY EVERY CARD!



CROSS-OUT GAME NO. 12

1	3	5	7	15	17
19	21	23	29	35	39
41	43	45	47	55	57
59	61	63	65	67	79
83	85	87	93	95	97

BACHMAN PRETZELS 10-oz. Pkg. **37¢**

Bib Orange Juice 3 4-oz. Cans **25¢**

Bakers CARAMEL CHIPS 6-oz. Pkg. **39¢**

Bakers ANGEL FLAKE COCOANUT 3/4-oz. Can **21¢**

Jif Creamy PEANUT BUTTER 12-oz. Jar **43¢** 18-oz. Jar **63¢** Crunchy 12-oz. Jar **43¢**

Devonsheer BREAD CRUMBS 10-oz. Pkg. **19¢**

Birds Eye DELICIOUS **Mixed Fruit** 12-Oz. Pk. **39¢** **Peaches** 12-Oz. Pk. **29¢** **Rhubarb** 16-Oz. Pk. **29¢**

Chicken of the Sea LIGHT CHUNK TUNA 6 1/2-oz. Can **34¢**

Kasco DOG MEAL 2 Lb. Pkg. **35¢** 5 Lb. Pkg. **69¢** 25-lb. Pkg. **2.79**