

Committee Reports on School Evaluation

(Continued from Page 13)

service is in the lack of work space, water and storage facilities. A second limitation is in the use of the library for study hall purposes. Both those limitations are due to building limitations.

The committee recommends: that space be allocated to the Librarian to be used for the acquisition, cataloging and distribution of audio-visual materials and equipment; that a Metropolitan newspaper be subscribed to; and that more space be provided for issuing and returning of books.

G. Guidance Service

The administration and faculty recognize the value and importance of guidance services and are taking steps to develop a program which is in line with these values. Within the faculty are several people well equipped to carry out the program and who have been able to secure the complete cooperation of the faculty.

Guidance work consists of a basic testing program running throughout the system and group guidance classes operating around the problems of pupils as well as individual educational and vocational guidance in the ninth and eleventh grades. The resources of the community have been drawn upon in the work of its guidance department. Records of individuals are available and are centrally located.

Recommendations include a greater time allotment for individual guidance; that part time of a female faculty member, properly certified, be provided to work with girls; that some attention be given to use of the following types of tests: aptitude tests; personality tests; personality ratings; and interest inventories; that a study be made to evaluate ways of simplifying and consolidating the recording and use of test results; that a survey of occupations be included in the group guidance courses in the eighth or ninth grades; that some sequence in group guidance classes be developed and the amount of overlapping in course content be reduced; that clerical help be provided for scoring and recording of test data; student clerks not have access to records of other students; and that a committee consisting of the principal, guidance counselors, school nurse and others be appointed and assigned the function of reviewing the entire guidance program.

H. School Plant

Comments in this area refer to the site free from noise, traffic, and industrial hazards and its general scenic beauty; to a well-constructed and attractive building which has been well kept and in which classrooms have been continually redecorated and painted; to special rooms such as the home economics room, health room, cafeteria and kitchen, all of which are well equipped and made attractive; and to adequate bus transportation services.

The committee recommends that in the event of a new building being erected, as planned, that a larger site, more accessible, be secured; that the floors of the present building be placed in better condition; that desk tops throughout be refinished; that a study of illumination be made and the necessary improvements made; that a solution to the water shortage be sought; and that metal cabinets for storage of paints and other inflammable materials be provided; that an effort be made to improve the physical appearance of the gymnasium-auditorium; that the boys' lockers and shower rooms be improved and sanitary conditions maintained; that a teachers' room be made available; and that a fire proof vault be provided to store permanent records; and that a study of maintenance be made in order to set up standards and to set up practices to meet those standards.

It is understood that the Board of Education is aware of the limitations of the present plant and is presently considering the erection of a more adequate building. The program of the school in many areas is limited by the limitations of space in the present building. In line with this it is recommended that a study of community growth be made in order to contemplate future school building needs.

I. School Staff and Administration
The joint school district is fortunate in having school boards which seem to possess deep insight into the general educational needs

of the communities they represent. The joint school board has recognized its responsibility as a policy-making group, leaving to the administration the responsibility to execute its policies. There is adequate administrative and supervisory personnel and the high school principal is well equipped to discharge the responsibilities of his office. Staff selections have been made on the basis of qualifications and there has been small turnover of staff throughout the years. Staff members have taken additional professional and academic courses in order to better equip themselves for the job.

The committee commends the supervising principal for his outstanding educational leadership in interpreting to the public the school program and the needs of boys and girls and for his vision in working toward a larger and more efficient unit of school administration.

The committee highly commends the supervising principal and the high school principal on their educational leadership, on the democratic manner in which the school is administered, and on their success in developing a cooperative spirit among the members of the faculty.

It commends the teachers for their faithful service to the boys and girls of the district and for their interest in extra-class activities, despite heavy teaching loads.

It commends the school for the competent methods used in the handling of school finances; for the lunchroom services provided, including such phases as menus and administration of the program; and for conduct exhibited by students.

The committee recommends that a study be made of class size and teacher load; that clerical help be provided the high school principal; that the salary schedule be restudied and revised upward and that new professional staff members be placed on a salary guide; and that the custodial staff be enlarged.

General Comments

The graphic summaries which follow are plotted from the average of appropriate evaluations. No attempt has been made to adjust the position in relation to other schools. It is expected that regional associations will publish norms periodically from evaluations made with the 1950 edition of the Evaluative Criteria; and when these are available, administrators will be able to discover the relative position of their schools among the schools in their area. . . . School staffs may find the "Summary Form for Subject Field Divisions" useful in analyzing differences among various aspects of the separate subject-matter fields which are not shown on the "Graphic Summaries."

The members of the visiting committee appreciate the opportunity they had to visit Westmoreland High School and wish to thank the entire staff and student body for making their visit so pleasant and for the many courtesies extended to them.

Respectfully submitted,
Milton H. Steinhauer,
Chairman.

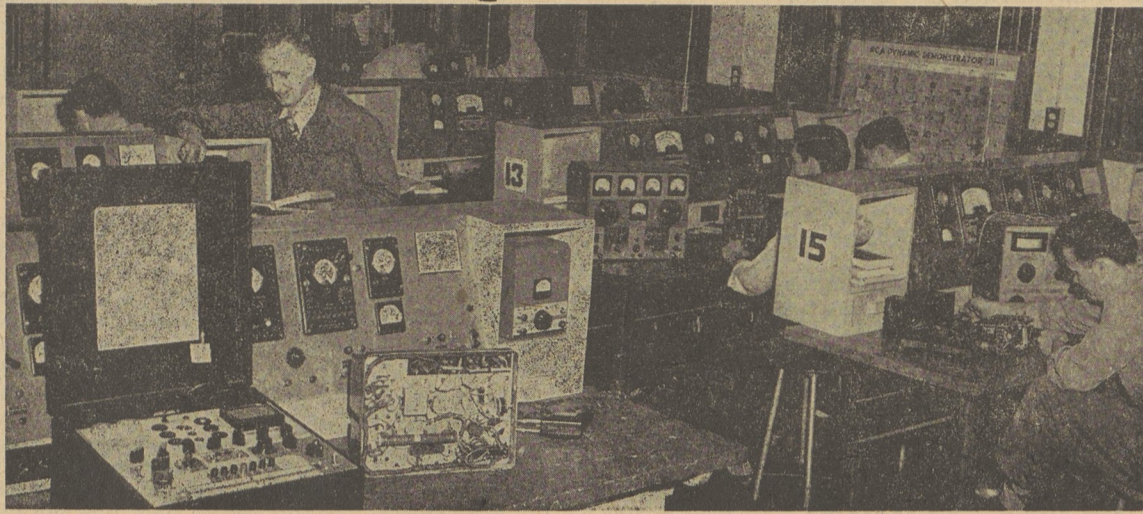
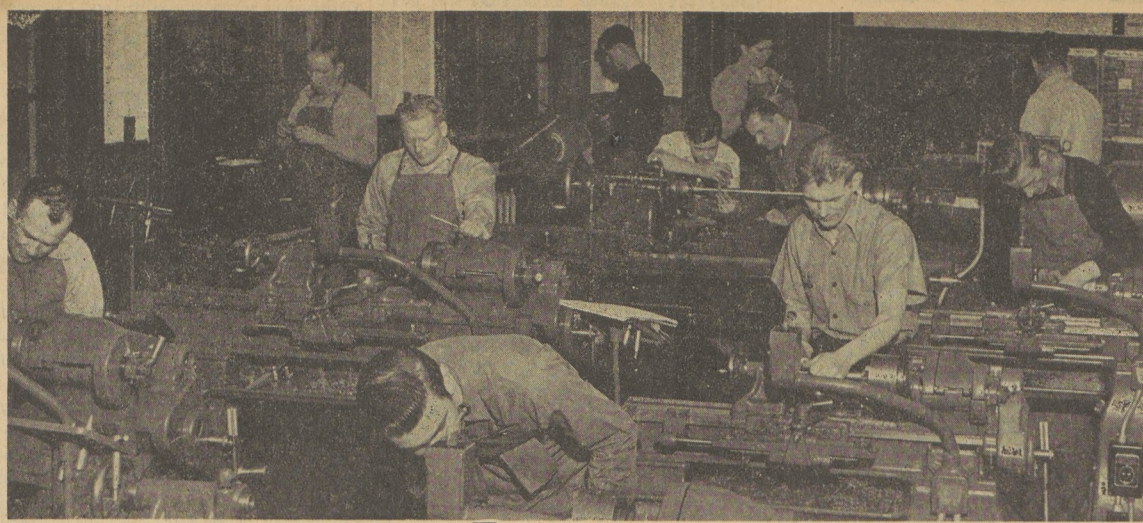
Truckville Grade PTA Board Holds Meeting

Members of the Executive Committee of Truckville Grade School met at the home of Jack Thornton, president, Wednesday evening and made plans for the coming year. Present were Mrs. John Landis, program chairman, Mrs. Thomas Pierce, secretary, Mrs. Kenneth Woolbert, ways and means chairman; Mrs. Edward Jenkins, membership chairman; Mrs. Edmond Hildebrand, publicity, Theodore Laskowski, treasurer and Adelaide Burgess, vice president.

First meeting of the PTA will be held at the school, October 4, at 8 p. m. Following the business meeting, teachers will meet parents in the class rooms and outline students' daily schedules and objectives for the year.

The United States gained the sovereignty of the canal strip at Panama by the Hay-Bunau-Varilla Treaty of November 18, 1903.

Work Goes On In Kingston Vocational Classrooms



Kingston Vocational School Serves Students Of The Area

Kingston Vocational School functions as a service institution to all the school districts in this area. Organized and supervised by Kingston Borough School District it operates as an area vocational school under Section 1809 of the Pennsylvania School Code which provides that any high school boy of any district may attend the vocational school or department of another district, and that the sending district is obligated for the tuition of the vocational students. The sending district in turn receives an appropriation from the state which partly covers the tuition cost.

Wilkes College Is Selective On Admissions

Accepts About One Third Of Students Seeking Admission

The program of the vocational school varies from the traditional high school curriculum in that a student spends one-half of his time in the shop of his choice and the other half is spent in the Kingston High School, where the student receives training in regular high school subjects. Upon the successful completion of the three-year program the student receives a regular Kingston High School diploma.

This plan is considered by many to be an ideal one for this particular area in that a vocational school program is an expensive one to organize, thus the surrounding districts may take advantage of such a program at a small nominal cost. The school and its program has the backing of civic area leaders such as Mr. William O. Sword, President of the Greater Wilkes-Barre Industrial Fund and Dr. Eugene S. Farley, Chairman of the Education Committee of your Chamber of Commerce, who have stated "that a modern industry and education must establish a working partnership if a sound economy is to be maintained in the midst of technical developments. The need for a vocational training program to provide skilled workers has been constantly emphasized since the inception of Operation Jobs. Established industries have sought trained men that were not available, and new industries have indicated an unwillingness to come to a community that does not guarantee a flow of trained workers."

The evening school of Wilkes College and that offering educational credit under Bucknell University Extension Program will open a week later than the day school.

Stanley Wasilewski, director of the evening division, will be in his office at Chase Hall, South River street each evening to provide information concerning the evening program of both schools.

Mr. Wasilewski pointed out yesterday that more and more adults are realizing that they can still fulfill a long-time ambition to "get a college degree" even though they are working full time in the day.

"We will be only too happy to plan a program that will allow a full time worker to earn credit toward a degree," the evening school director pointed out. "It is not only possible, but hundreds have already accomplished it since we first began offering evening classes leading toward a college degree."

Persons interested in cultural courses, without college credit, are also advised to contact the registrar or the director of the evening school for information about these courses.

Touring Through West

Cards have been received from Mr. and Mrs. Sev Newberry and Sev Jr., from Gallatin National Forest, Montana, saying they are having a gorgeous trip through the West, visiting the Bad Lands, the Black Hills, Big Horn, Yellowstone and Glacier Parks. They are enjoying camping in the forests.

Headquarters For School Supplies

TOY CENTER

Dallas 5c 10c to \$1 Store

JOHN E. WILLIAMS — Owner

46 Main Street

Dallas

Back To School

Shoes and Clothing From Kindergarten To College

U. S. Keds — Rubber Footwear

Jackets — Sweaters

Shirts — Slacks

Pajamas — Underwear

Socks — Ties — Belts

"Wrangler" Dungarees

FOR GIRLS — BOYS — MEN

Joe's Men's Shop

35 Main St.

Dallas

Phone 4-7611

Store Hours 10 to 5:30 — Thursday 12 to 8:30

At WALTER'S

Wilkes-Barre



Ready for the Big Day...

All the school-going Stride Rites are here . . . and we've a style, size and width for every member of the class! Let Stride Rite quality and fit . . . known all over America . . . help protect all the young feet in your family. And let our expert fitting help your children to have shoes suited to their individual needs. Be sure to see us before the Big Day!

THE STRIDE RITE



As advertised in "Parent's Magazine."

\$4.50 to \$8.95 according to size

WALTER'S Shoe Store

Owner — Operated Wilkes-Barre

Smart School Clothes

Everything Nationally Advertised

"SEVENTEEN" — "HARPERS BAZAAR"

"MADEMOISELLE" — "CHARM"

Bobby Brooks BLOUSES & SWEATERS

Majestic Dyed-to-Match

SWEATERS and SKIRTS

Petti and Mink Mode DRESSES

Shir-tex SLACKS, Bermuda SHORTS

Koret-of-California's NEW BLUE

JEAN OUTFITS "Kortigans"

"The Store for discriminating Mothers and Daughters"

ESTELLE'S

LAWRENCE LOFTIE Knit Dresses

38 MAIN ST.

DALLAS

1954—55

Hunting Licenses

Sure-Shot Shells

EVANS

Retall

DRUG STORE

Phone 4-3888 Shavertown