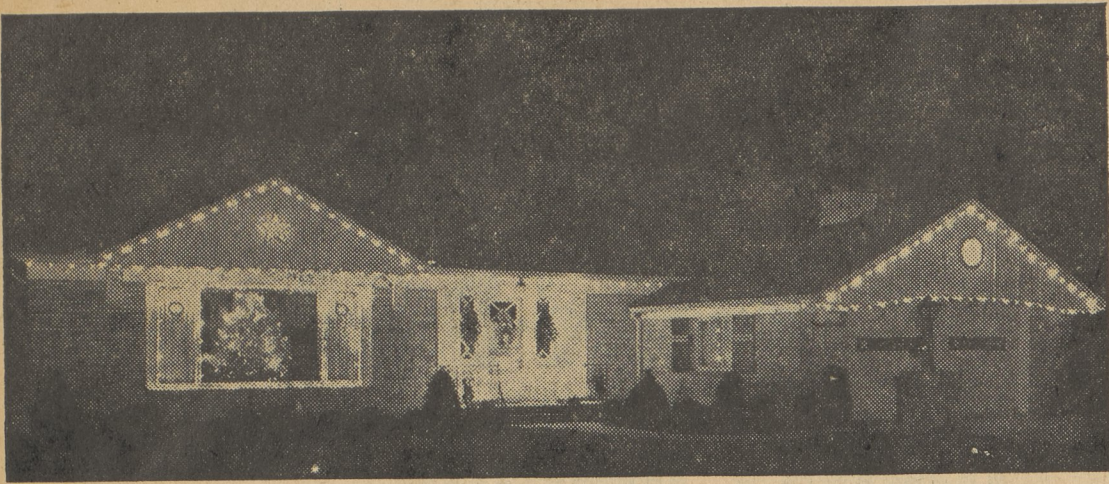


## LIGHTED HOME REFLECTS HOLIDAY CHEER



Plan your holiday lighting early so that you can make the most of

Have you ever suspected that the man next door or the neighbor across the street achieved just a little more of a professional result with his outdoor holiday decorations than you have? If so, maybe the answer lies in the fact that he planned his display on paper, not as you did, as you went along putting up your outdoor lights.

One of the best ways I know to arrive at an effective display is to make a rough sketch of your house and indicate how you are going to decorate it. Then check your equipment to see if you have everything you need and that what you do have is in good condition.

**Save Time-Energy**  
There are many ways this plan on paper can help you. If your house has interesting architectural features, it will remind you to emphasize them with lights. Once you've decided on your basic design, you may find it helpful to install ordinary brass cup hooks which can't rust and hang your strings of outdoor lights on them. Leave the

your present equipment. The picture above shows how you can have

hooks in year 'round to speed up next year's lighting job. Remember too that the neater you string your wires, the more professional your results will be. Dangling wires detract from the design.

Notice in the photograph above how lights can emphasize the interesting line of a roof. Placing the lights close together can outline the roof in almost a continuous band of light. Although you can't see it in the black and white photograph, using only one or two colors will give your display a more unified appearance.

**Lights Can Contrast**  
For contrast, for instance, you can use cool colors to outline the house and warm colors around your door. Warm colors will give a feeling of welcome at entrances.

In addition to your strings of outdoor colored lights, plan your holiday decorations so the whole effect will present a pleasing picture. The home pictured above shows good use of ready-made, ready-to-hang lighted devices that can add

a variety of decorations, yet still have a unified effect.

variety to your exterior decorating. Notice how a lighted star on one side of the house is balanced with a lighted Santa mask on the opposite side of the house. The indoor tree in the picture window which is framed with strings of colored lights, becomes an important part of the overall holiday theme. For additional highlights, the front doorway which is hung with sprays of Christmas greens and shiny red bells, is spotlighted by a weatherproof projector spotlight concealed behind the shrubbery.

### Vassar, Hamilton Choir To Sing The Magnificat

Graduates of Vassar and Hamilton Colleges who tune in to station WBAX Sunday afternoon at 4:30 will hear their combined college choirs singing the Magnificat, by Johan Sebastian Bach. This is a re-broadcasting from a tape recording made in the newly decorated chapel at Vassar on December 13.

## Make A Toy Chest Bench HERE'S HOW . . .

### MAKE A TOY CHEST BENCH

Christmas toys will stay out of the way and be better kept if the child has an attractive, usable toy chest.

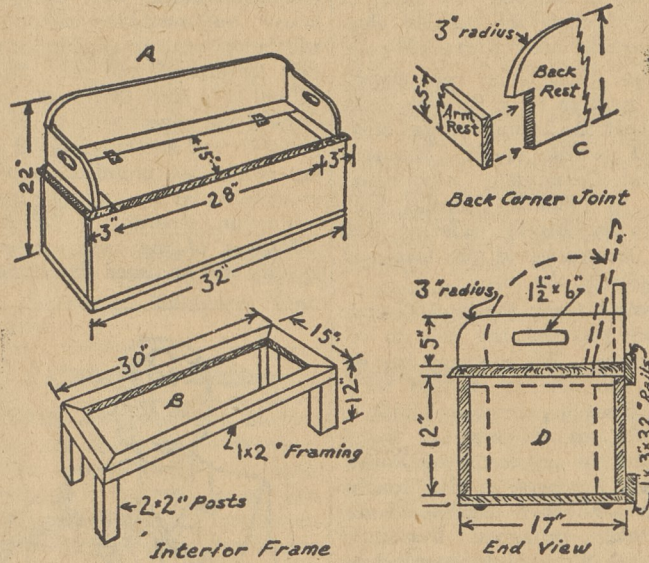
The completed chest, A, is begun by constructing a sturdy frame, B, to which sides, ends and bottom are nailed to form a box.

The back rest and arm rest unit is built separately and mounted on 1x3 rails, nailed from the bottom. Details are shown in A, C, and D. The

completed unit is then screwed to the top of the original frame.

A hinged seat, 15 by 28 inches, completes the chest and serves as a lid. The back rails, shown in D, add greater strength.

Dome glider nails are used beneath for sliding. All materials, including hardware, are easy to obtain from lumber dealers.



For Christmas, and especially for after Christmas when the season's accumulation of toys clutters up the house, the answer to the question, "Where is my box of paints or my toy wagon?" is an attractive toy chest. A chest that serves also as a seat does double duty.

Since the chest will see hard usage, it should be built around a sturdy frame, Drawing B. Corner posts, 2x2's, 11 inches high, provide for a seat 14 inches high in the finished chest—the right size for a small child. The top of the frame is of 1x2 material, 30 inches long. The frame has mitred corners. If the home craftsman has a mitre box, he will use the 45 degree angle; but without a mitre box, just measure back 2 inches on the inner sides and cut to the corner. If screws are used to fasten the mitred corners, the frame will be drawn tightly together. The frame is then nailed or screwed to the corner posts.

The rest of the basic box is completed by nailing the sides and ends to the frame, using ordinary butt joints, so that the frame is completely enclosed. The bottom boards are nailed to the corner posts and

to the sides and ends. The top, which will include a hinged seat, is made separately and later fastened to the box.

The back rest is of 1x8 material, 30 inches long. Drawing C shows how to cut the back to fit the arm rest. The rounding may be accomplished with dividers, or with a pencil, a piece of string and a thumb tack. Use the thumb tack as a pivot, the string as dividers, and the pencil to swing an arc at the end of the string. Now for cutting the curve: if you have a coping saw this is no trick at all; but if you haven't a series of straight cuts with a handsaw will soon produce a multi-sided corner that can easily be reduced to the penciled arc with a wood rasp.

The arm rest is then screwed or nailed into the back rest. A 34-inch rail of 1x3 material is nailed along the bottom of the back rest so that the back rest is flush with the back edge of the rail. Nailing is done from the bottom of the rail. A similar rail, 15 inches long, is fastened from below to each arm rest. Now the back rest, side arms, and rails are all one unit. This unit is lifted on to the box, the side

rails and back rail are fastened with screws to the frame.

The hinged seat is 15 inches from front to rear, with a 1-inch overhang in front to make lifting easier. It is hinged to the back rail as shown in Drawing A. The hinges may be exposed, as shown, or inside hinges may be used.

For additional strength, two binding rails are added on the back of the chest, the upper one being most important since it supports the back rest. These are 1x3 material, 32 inches long.

Added frills include a handhold on the side arms, made by boring a 1-inch hole and cutting out the

slot with a coping saw or keyhole saw. Beveled edges are produced with a wood rasp and plane. The chest may be given a natural finish or it may be painted attractively. Decals may be used to decorate the back rest or the front of the chest.

For easy sliding on the floor, four dome glider nails are driven into the bottom beneath the corner posts. Casters are nice, but they tend to encourage use of the chest as a vehicle rather than as a receptacle.

"There's always free cheese in a mouse-trap, but I never saw a happy mouse there!"

## Weekend Special

For Your Christmas Baking  
YOUR BEST BUY

LARGE EGGS  
3 doz. \$1.89

Order Your Xmas Turkey Early

TRUCKSVILLE MILL  
POULTRY SHOP

Main Highway Phone 4-3376 Trucksville

## REDDY FOR Christmas

Here's a tip that'll make you a popular Christmas giver this year . . . concentrate on practical, convenient, long lasting ELECTRICAL APPLIANCES!

For when you give Electrical Appliances . . . you're giving something that will be used and appreciated day after day . . . you're giving Comfort and Convenience plus years of Economical Service!

**Reddy Kilowatt**  
Your Electric Servant

COPYRIGHT BY REDDY KILOWATT, INC.

**LUZERNE ELECTRIC AND GAS DIVISION**  
THE UNITED GAS IMPROVEMENT COMPANY

## THIS IS IT FOLKS! OUR MOST SENSATIONAL CHRISTMAS SALE

Guaranteed Savings or Your Money Back!

**Men's Genuine Leather Dress Belts**  
All Sizes  
Sale Price **84¢**

**Men's Khaki Tanker Jackets**  
Extra heavy wool quilt lining. Sizes 36 to 46.  
Sale Price **\$6.95**

**Ladies' and Girls' Genuine Blue Bell WRANGLERS**  
Sizes 8 to 20  
Sale Price . . . **\$2.69**

**3 PIECE TV LOUNGING PAJAMAS**  
Quilted Jacket. Sizes 18 to 34. Assorted Colors.  
Sale Price . . . **\$6.95**

**MEN'S TURTLE NECK LONG SLEEVE SHIRTS**  
All Sizes  
Sale Price . . . **\$1.00**

**GIRLS' CAMPUS or STADIUM BOOTS**  
with Fur Collars  
Sizes 4 to 9 . . . **\$3.89**

**CHILDREN'S SLEEPERS**  
One- and two-piece—assorted colors. Sizes 6 to 6. Famous Brands.  
Sale Price . . . **\$1.87**

**CHILDREN'S CARDIGAN SWEATERS**  
In nylon and 100% wool. Sizes 4 to 6x  
Sale Price . . . **\$1.99**

**ENTIRE CHRISTMAS STOCK ORDERED SOLD TO THE LAST PIECE**

**3 PIECE BOYS' and GIRLS' Gabardine Snow Suits**  
Quilt and alpaca lined—fur collars—variety of colors—sizes 1 to 6x.  
Sale Price **\$9.79**

**BOYS' DENIM FLANNEL LINED DUNGAREES**  
Zipper Fly—Sizes 6 to 12  
Sale Price **\$1.99**

**MEN'S FLANNEL HOUNDSTOOTH SPORT SHIRTS**  
Colors—white and black, green and black, yellow and black. Sizes—small, medium, large and extra large.  
Sale Price **\$2.59** or **2 for \$5.00**

**BOYS' and GIRLS' Gabardine Surcoats**  
100% all wool—quilt lined. Assorted colors. Sizes 4 to 12.  
Sale Price **\$6.39**

**BOYS' CORDUROY PANTS**  
Size 12 to 18 **\$1.99**

**Infants' Estren 1-Piece Snow Suits**  
Nationally known brands—Sale Price **\$6.73**

**Genuine HOPALONG CASSIDY PANTS**  
Sizes 4 to 16  
Sale Price . . . **\$2.73**

**Genuine HOPALONG CASSIDY SHIRTS**  
Sizes 6 1/2 to 3  
Sale Price . . . **\$2.45**

**MEN'S GARIBDINE WINTER WEIGHT DRESS TROUSERS**  
Sizes 28 to 42  
Assorted Colors . . . **\$3.99**

**SLIPPER SOX**  
100% All Wool Hosiery with Genuine Leather Soles. Sizes for men, women and children.  
Sale Price . . . **\$1.89**

**MEN'S GENUINE LEATHER DRESS GLOVES**  
Wool lined—sizes 8 1/2 to 12  
Sale Price . . . **\$2.59**

**LADIES' ALL NYLON PANTIES**  
Sale Price . . . **2 for \$1.00**

**LADIES' RAYON HALF SLIPS**  
Colors—maize, pink, white and blue. Sizes—small, medium, large.  
Sale Price . . . **88¢**

**MEN'S DRESS SOCKS**  
Assorted Patterns  
5 pairs **\$1.00**

**LADIES' FELT BEDROOM SLIPPERS**  
In Wine or Blue  
Sale Price . . . **95¢**

**24 MAIN ST. LUZERNE**

Across From  
Luzerne  
Theatre

# FACTORY DISTRIBUTORS

**FREE PARKING**  
Open 'til 9 P. M. Every Nite From Now Until Christmas

**JAYCEE CHRISTMAS LIGHTING CONTEST**  
OFFICIAL ENTRY BLANK

Sponsored by Wilkes-Barre Junior Chamber of Commerce

Check one: . . . . . Home Entry  
. . . . . Commercial Entry

Please Enter our Christmas Lighting Display in the CHRISTMAS LIGHTING CONTEST

Name . . . . . Phone . . . . .

Address . . . . .

All entries will be judged between December 20 and December 25 between 6:30 and 11 P.M. All lights must be on. All entries must be postmarked on or before midnight December 19, 1953.

MAIL ENTRIES TO: Jaycee Christmas Lighting Contest  
266 Miners Nat'l Bldg., Wilkes-Barre