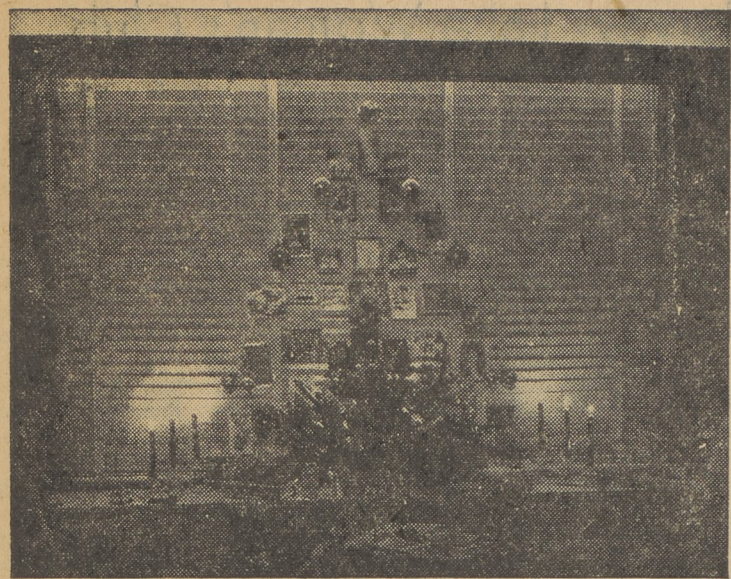


## CHRISTMAS LIGHTING SETS MOOD FOR HOLIDAY ENTERTAINING



If you plan your Christmas lighting around the furnishings in your living room it can provide all the lighting you need for holiday entertaining.

To give you an idea of how to spread your Christmas lighting around your room, study the pictures above. These three settings designed by Miss Mary Webber, General Electric lighting specialist, for use in her own living room 140 square feet, provided an attractive atmosphere for holiday entertaining.

First step in lighting the room above was to create a dramatic point of interest on the large window shown in the top left photograph above. A miniature tree was made with short balsam branches arranged in a large size bread pan covered with gold paper. The pan was stuffed tightly with chicken wire to hold the branches in place.

To silhouette the miniature tree and to give interesting color patches of light on the blind, a narrow cardboard box, cut to the length and height of the pan was placed directly behind it. Holes were cut in the top of the cardboard box to hold sockets of a Christmas tree string of multiple lights in an upright position. A secondary "tree" fashioned from Christmas cards and shiny ornaments was created on the blind itself.

The lighted valance, together with twinkling candles, creates fascinating reflections on the mirror-like ornaments. If your valance is not lighted or, if your window does not have one, you can use two or three strings of Christmas lights entwined in greens above your window.

Across the room, as shown in the lower photograph below, another lighted arrangement highlights the

top of the television set. All parts of the decoration are inexpensive "store items." However, to give dimensions, depth and glow, the large angel ornament was lighted. The top of the ornament was pried up enough to insert a wired intermediate socket a tiny clear S-11 10-watt bulb. The cord was taped tight to the back of the ornament and carried under the non-inflammable, sparkle-dotted cotton down to a convenient outlet.

Notice how although the bulb is not visible, it rays encircle the tiny angel choir.

To complete the holiday lighting in the room, shiny green foil paper was taped to the back of the secretary as shown in the picture at the right above. For light and sparkle, a 25-watt tubular (T-6½) bulb, fastened in the top left-hand front corner of the secretary where it remains year 'round, highlights the delicate gold angel and arrangement of greens. Another arrangement used year 'round as well as during the holidays is the simple reflector on top of the bookcase. Only 18½ inches long and painted to match the wall the reflector conceals a long 60-watt lumiline lamp for subtle lighting effects on wall and ceiling.

### Joins Navy

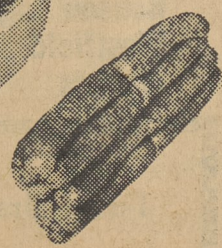
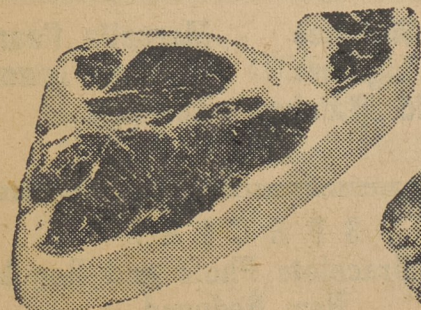
Robert Bodycomb, Jr., has enlisted in the United States Navy. He left Tuesday for the Philadelphia Navy Yard and has been assigned to Bainbridge, Md. Bobby attended the University of Kentucky last year and would have been a junior this year.

# VISIT THE New Home Of Benton Sausage and Scrapple

NOW LOCATED ON LUZERNE-DALLAS  
HIGHWAY NEXT TO SUNSET DINER

### Featuring

- Our own Cured Hams
- Country-style Sausage and Scrapple
- Our own Cured Bacon  
Pork Loins, Pork Goodies,  
Canadian Style Bacon



CHOICE TOP QUALITY MEATS

Phone 8-3110 James Vance, Owner

# GIFTS... for all the FAMILY!

**For Mom**  
ROASTERS  
PRESSURE COOKERS  
CLOCKS  
COSCO STOOLS  
REVERE WARE  
KITCHEN SETS  
CANNISTER SETS

Use A  
**BACK MT. LUMBER**  
Layaway Plan

**For Dad**  
Home Electric  
TOOL KITS  
CARVING SETS  
SPORTING GOODS  
POWER MOWERS  
RADIOS  
CHEF'S SETS

Santa Will Be Here  
Tonight-Tomorrow

**For Sis**  
DOLLS - DOLLS - DOLLS  
PAINT SETS  
SEWING KITS - GAMES  
GIRLS' BICYCLES  
MODELING CLAY  
Thousands of Others

**For Junior**  
Wonderful Lionel Trains  
BICYCLES - GAMES  
GUNS - KNIVES - BALLS  
SPACE SUITS  
Football - Basketballs  
Thousands of Others

**Back Mt. Lumber & Coal Co.**  
Main Highway Shavertown

STORE CLOSED SATURDAY AFTER XMAS AND ALSO SATURDAY AFTER NEW YEAR'S DAY

